

Informations Rapides

31 janvier 2017 - n° 32



■ Turnover in industry and construction – November 2016

In November 2016, the turnover recovered sharply in the manufacturing industry (+2.4%)

Warning

Turnover indices (total and exports) have been recalculated in the building of ships and floating structures to take better into account exceptional deliveries of ocean liners in 2016.

The result is unusual revisions in the shipbuilding sector but also by aggregation in manufacture of other transport equipment and in the manufacturing industry.

Every index in this issue is in value (tax excluded), seasonally and working day adjusted.

The commentary shows variations of subsections by decreasing contribution. The contribution of a subsection depends on the extent of the change and on its weight.

In November 2016, the turnover recovered sharply in the *manufacturing industry* (+2.4% after -0.4% in October). The rebound was slightly more marked in exports (+2.7% after -0.9%).

In the *industry* as a whole, the turnover picked up sharply too (+2.7% after -0.3%).

Sharp increase over the last three months (+2.1%)

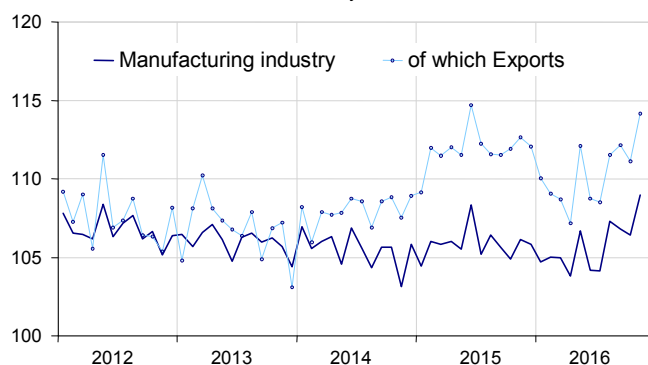
Over the last three months, the turnover rose sharply in the *manufacturing industry* as well as in the *industry* as a whole (+2.1%). It grew in every sector of the *manufacturing industry*: “*other manufacturing*” (+1.8%), *manufacture of transport equipment* (+2.4%), *manufacture of food products and beverages* (+1.7%), *manufacture of coke and refined petroleum products* (+7.7%) and *machinery and equipment goods* (+1.4%).

Strong growth compared to the previous year (+1.7%)

The turnover of the last three months grew sharply compared to the same three months of the previous year in the *manufacturing industry* (+1.7%), as in the *industry* as a whole (+2.1%). Over this period, it rose markedly in the *manufacture of transport equipment* (+6.9%) and more modestly in the *manufacture of food products and beverages* (+1.6%), that of *machinery and equipment goods* (+1.5%) and the *manufacture of coke and refined petroleum products* (+1.2%). It was virtually stable in the “*other manufacturing*” sector (+0.1%).

Turnover in manufacturing industry

Turnover indexes, SA-WDA value, Base year 2010



Source: INSEE

Variation of the turnover in industry and construction

SA-WDA value, Base year 2010

NA : A 10, (A 17)	Weight*	Change in %			
		Nov./ Oct.	Oct./ Sep.	q-o-q (1)	y-o-y (2)
BE: INDUSTRY	10000	2.7	-0.3	2.1	2.1
CZ: MANUFACTURING INDUSTRY	8346	2.4	-0.4	2.1	1.7
Of which Exports	2677	2.7	-0.9	2.6	0.4
(C1): Manufacture of food products and beverages	1685	1.3	0.5	1.7	1.6
(C2): Manufacture of coke and refined petroleum products	561	-1.6	6.6	7.7	1.2
(C3): Machinery and equipment goods	953	4.5	-1.6	1.4	1.5
(C4): Manufacture of transport equipment	1265	2.9	-2.2	2.4	6.9
(C5): Other manufacturing	3881	2,6	-0.5	1.8	0.1
DE: Mining and quarrying; energy; water supply; waste management	1654	4.0	0.0	2.2	3.6
FZ: CONSTRUCTION	10000	1.3	0.0	3.0	1.3

* 10000=B...E and F

(1) Quarter-on-quarter: last three months / previous three months

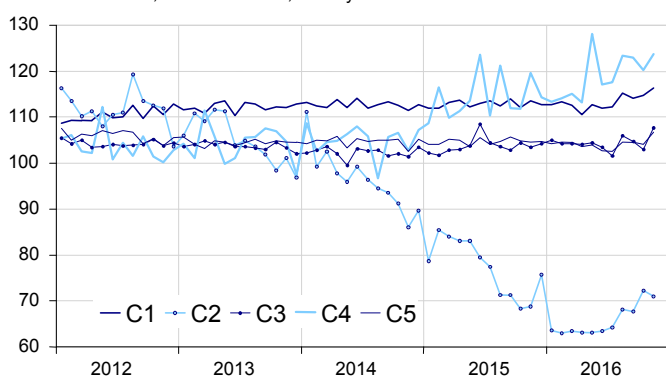
(2) Year-on-year: last three months / same three months of previous year

The codes correspond to different levels of aggregation of the NACE classification.

Source: INSEE

Turnover in manufacturing industry by sector

Turnover indexes, SA-WDA value, Base year 2010



Source: INSEE

Significant rise in "other manufacturing" (+2.6%)

The turnover in "other manufacturing" strongly recovered in November (+2.6%) after a decrease in October (-0.5%). The increase was mainly due to the *manufacture of chemicals and chemicals products* (+4.5%), the *manufacture of rubber and plastics products, and other non-metallic mineral products* (+3.8%) and the *manufacture of basic pharmaceutical products and pharmaceutical preparations* (+4.1%).

Strong rebound in machinery and equipment goods (+4.5%)

The turnover in *machinery and equipment goods* bounced back vigorously in November (+4.5%) after two months of significant decline (-1.6% in October and -1.2% in September). It recovered in the *manufacture of machinery and equipment n.e.c.* (+4.6%) and the *manufacture of computer, electronic and optical products* (+6.1%). It went on increasing in the *manufacture of electrical equipment* (+2.5%).

Recovery in transport equipment (+2.9%)

The turnover in the *manufacture of transport equipment* recovered strongly in November (+2.9% after -2.2% in October), thanks to the *manufacture of other transport equipment* (+4.3% after -7.4% in October). The turnover in the *manufacture of motor vehicles, trailers and semi-trailers* rose again (+1.5%), even if it was at a lower pace than in October (+4.5%).

Further increase in food products and beverages (+1.3%)

In November, the turnover accelerated in the *manufacture of food products and beverages* (+1.3% after +0.5% in October).

Downturn in coke and refined petroleum products (-1.6%)

In November, the turnover fell back in the *manufacture of coke and refined petroleum products* (-1.6%) after a sharp increase in October (+6.6%).

Revisions:

In the *manufacturing industry*, the variation in turnover is unchanged at -0.4% for October 2016. It has been lowered by 0.1 points in the *industry* as a whole (-0.3% instead of -0.2% previously).

Indexes of turnover in industry and construction

SA-WDA, based year 2010

Industries:	Weight	Nov. 2016	Change in %		
			Nov./ Oct.	Oct./ Sep.	q-o-q (1)
BE: INDUSTRY	10000	111.0	2.7	-0.3	2.1
CZ: MANUFACTURING INDUSTRY	8346	109.0	2.4	-0.4	2.1
of which Exports	2677	114.2	2.7	-0.9	2.6
(C1): Man. of food products and beverages	1685	116.3	1.3	0.5	1.7
of which Exports	285	119.9	1.1	-0.4	2.3
(C2): Man. of coke and refined petroleum products	561	71.0	-1.6	6.6	7.7
(C3): Machinery and equipment goods	953	107.7	4.5	-1.6	1.4
of which Exports	469	105.4	3.5	0.1	1.2
[CI] Man. of computer, electronic and optical products	306	106.2	6.1	-4.4	-1.1
[CJ] Man. of electrical equipment	245	102.6	2.5	0.6	3.7
[CK] Man. of machinery and equipment n.e.c.	402	111.9	4.6	-0.7	2.0
(C4): Man. of transport equipment	1265	123.8	2.9	-2.2	2.4
of which Exports	617	124.9	0.6	-3.9	2.1
[CL1] Man. of motor vehicles, trailers and semi-trailers	702	103.1	1.5	4.5	-1.7
[CL2] Man. of other transport equipment	562	149.6	4.3	-7.4	6.2
(C5): Other manufacturing	3881	106.8	2.6	-0.5	1.8
of which Exports	1237	112.6	5.6	-1.3	2.9
[CB] Man. of textiles, wearing apparel, leather and related products	188	113.1	2.9	0.9	0.9
[CC] Man. of wood and paper products; printing and reproduction of recorded media	436	98.8	2.8	-0.5	1.1
[CE] Man. of chemicals and chemical products	745	104.5	4.5	-1.3	3.4
[CF] Man. of basic pharmaceutical products and pharmaceutical preparations	304	111.5	4.1	0.0	-2.2
[CG] Man. of rubber and plastics products, and other non-metallic mineral products	629	106.0	3.8	-1.3	1.5
[CH] Man. of basic metals and fabricated metal products, except machinery and equipment	926	102.4	0.9	1.1	2.7
[CM] Other manufacturing; repair and installation of machinery and equipment	653	117.8	1.1	-1.6	2.1
DE: Mining and quarrying; energy, water supply, sewerage, waste management	1654	121.3	4.0	0.0	2.2
[BZ] Mining and quarrying	70	92.7	3.6	-1.8	0.1
[DZ] Electricity, gas, steam and air-conditioning supply	1205	124.0	3.3	0.2	2.4
[EZ] Water supply; sewerage, waste management and remediation	379	117.9	6.5	-0.2	2.0
FZ: CONSTRUCTION	10000	105.4	1.3	0.0	3.0

(1) Quarter-on-quarter: last three months / previous three months

Source: INSEE

Revisions of variations

(in point %)

	Oct./ Sept.	Sept./ Aug.	Aug./ July	Q3 2016/ Q2 2016	2015/ 2014
Industry (BE)	-0.12	0.04	-0.01	0.81	0.04
raw serie	-0.45	-0.01	0.12	1.74	0.03
SA-WDA parameters	0.33	0.05	-0.13	-0.92	0.01
Manufacturing industry (CZ)	-0.04	-0.01	-0.04	0.90	0.04
raw serie	-0.30	-0.01	0.12	2.10	0.03
SA-WDA parameters	0.26	0.00	-0.16	-1.20	0.01

How to read it: in manufacturing, the SA-WDA variation between September 2016 and October 2016 is revised by -0.04 points: -0.30 points are due to the raw serie's revision and 0.26 points to the new calculation of the SA-WDA parameters.

Source: INSEE

For further information:

- Complementary data (long series) and metadata (methodology, linked internet pages, etc.) are available on the web page of this index: <https://www.insee.fr/en/statistiques?debut=0&theme=30&conjoncture=6>
- Historical data are available on the BDM: [G1781](#), [G1782](#), [G1783](#), [G1784](#), [G1785](#), [G1786](#) and [G1787](#)
- Press contact: bureau-de-presse@insee.fr
- Follow us on Twitter @InseeFr_News: https://twitter.com/InseeFr_News

Next issue: 28 February 2017 at 12.00