

Informations Rapides

22 décembre 2016 - n° 340



■ Turnover in the wholesale trade and business services – October 2016

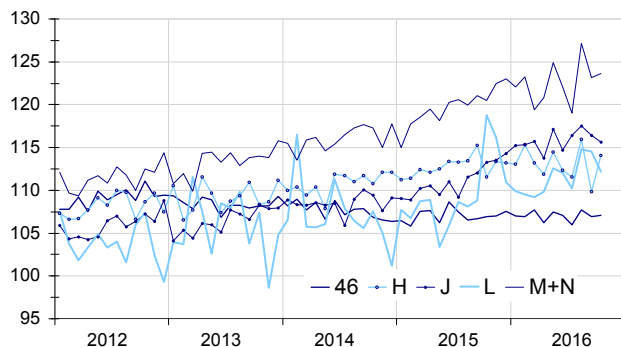
In October 2016, the turnover recovered in transportation, wholesale trade and business activities

Every index in this issue is in value (tax excluded), seasonally and working day adjusted (SA-WDA). The commentary shows variations of subsections by decreasing contribution. The contribution of a subsection depends on the extent of the change and on its weight.

In October 2016, the turnover bounced back strongly in *transportation and storage* (+3.9%) after a sharp fall in September (-5.2%). It picked up slightly in *wholesale trade, except of motor vehicles and motorcycles* (+0.2% after -0.8%) and in *business support* (+0.4% after -3.1%). By contrast, it fell again in *real estate activities* (-2.1% after -0.2%) and in *information and communication* (-0.7% after -0.9%).

Wholesale trade and business services

Turnover indices, SA-WDA value, Base year 2010



Source: INSEE

Sharp upturn in transportation and storage

In October, the turnover of *transportation and storage* bounced back vigorously (+3.9%) after a marked fall in September (-5.2%). It picked up notably in *water transport* (+27.4% after -17.4%), *warehousing and support activities for transportation* (+4.1% after -5.7%) and in *land transport* (+3.5% after -4.1%). By contrast, the turnover shrank again in *air transport* (-9.8%) and in *postal and courier activities* (-1.6%).

The turnover of *transportation and storage* rose over the last three months (+0.4% q-o-q) and was practically stable over a year (-0.1% y-o-y).

Slight rebound in wholesale trade, except of motor vehicles and motorcycles

In October, the turnover of *wholesale trade, except of motor vehicles and motorcycles* recovered slightly (+0.2%) after a decrease in September (-0.8%). It bounced back for *other specialised wholesalers* (+3.0% after -1.5%), for *wholesalers on a fee or contract basis* (+0.7% after -1.7%) and for *wholesalers of food, beverages and tobacco* (+0.4% after -0.7%). However, it declined for *wholesalers of household goods* (-1.1%) and for *wholesalers of agricultural raw materials and live animals* (-3.1%). The turnover of the *wholesale trade, except of motor vehicles and motorcycles* sector rose over the last three months (+0.4% q-o-q) and year-on-year (+0.5% y-o-y).

Variation in the turnover in wholesale trade and business services

SA-WDA value, Base year 2010

NACE rev.2 classification	Weight	Change in %			
		Oct./ Sept.	Sept./ Aug.	q-o-q (1)	y-o-y (2)
46 Wholesale trade, except of motor vehicles and motorcycles	1000	0.2	-0.8	0.4	0.5
H Transportation and storage	1000	3.9	-5.2	0.4	-0.1
J Information and communication	1000	-0.7	-0.9	0.4	3.8
L Real estate activities	1000	-2.1	-0.2	2.0	1.7
M+N Business support activities	1000	0.4	-3.1	2.2	3.5
M Professional, scientific and technical activities	585	-1.0	-3.3	3.0	2.7
N Administrative and support service activities	415	2.3	-2.9	1.1	4.4

(1) Quarter-on-quarter: last three months / previous three months

(2) Year-on-year: last three months / same three months of previous year

The codes correspond to different levels of aggregation of the NACE classification.

Source: INSEE

Moderate recovery in business support

In October, the turnover in *business support activities* recovered moderately (+0.4%) after a marked fall in September (-3.1%). It picked up in *administrative and support service activities* (+2.3% after -2.9%), particularly in *office administrative, office support and other business support activities* (+3.5%), *travel agency, tour operator and other reservation service and related activities* (+8.0%) and in *employment activities* (+2.0%). By contrast, the turnover declined again in *professional, scientific and technical activities* (-1.0% after -3.3%): it decreased in *architectural and engineering activities; technical testing and analysis* (-2.7%) and in *other professional, scientific or technical activities* (-5.8%), whereas it picked up in *scientific research and development* (+5.7%).

The turnover of *business support* rose markedly over the last three months (+2.2% q-o-q) and year on year (+3.5% y-o-y).

Marked drop in real estate activities

The turnover of *real estate activities* declined sharply in October (-2.1%) after a slight fall in September (-0.2%). It rose markedly over the last three months (+2.0% q-o-q) and over a year (+1.7% y-o-y).

Further fall in information and communication

The turnover in *information and communication* fell again in October (-0.7% after -0.9%). It decreased sharply in *telecommunications* (-2.0%) and shrank strongly in *motion picture, video and television programme production, sound recording and music publishing activities* (-6.6%). By contrast, it recovered in *computer programming, consultancy and related activities* (+0.9%) and in *information service activities* (+2.3%). The turnover in *information and communication* increased over the last three months (+0.4%) and sharply over the year (+3.8%).

• Revisions

The variation in the turnover for September 2016 has been revised upwards by 0.5 points in *real estate activities* and by 0.2 points in *transportation and storage*. It has been revised downwards by 0.5 points in the *wholesale trade, except of motor vehicles and motorcycles* and in *business support activities* and by 0.3 points in *information and communication*. These revisions are due to those of raw data (integration of late information, including changes of sector) and to the updating of the parameters used for the seasonal and working-day adjustment (SA-WDA).

Variation of the turnover in the wholesale trade and business services


SA-WDA value, Base year 2010

NACE rev.2 Classification	Weight	Oct. 2016	Change in %		
			Oct./ Sept.	Sept./ Aug.	q-o-q (1)
46 Wholesale trade, except of motor vehicles and motorcycles	1000	107.1	0.2	-0.8	0.4
461 Wholesale on a fee or contract basis	151	118.3	0.7	-1.7	0.9
462 Wholesale of agricultural raw materials and live animals	55	102.7	-3.1	0.4	-1.8
463 Wholesale of food, beverages and tobacco	173	114.4	0.4	-0.7	1.3
464 Wholesale of household goods	208	105.2	-1.1	-0.1	0.6
465 Wholesale of information and communication equipment	61	102.6	0.3	-1.1	-1.5
466 Wholesale of other machinery, equipment and supplies	126	109.4	-0.7	-0.9	0.8
467 Other specialised wholesale	198	91.9	3.0	-1.5	-0.4
469 Non specialised wholesale trade	28	131.5	-0.6	2.1	0.4
H Transportation and storage	1000	114.1	3.9	-5.2	0.4
49 Land transport and transport via pipelines	410	118.7	3.5	-4.1	2.2
50 Water transport	69	127.6	27.4	-17.4	-5.6
51 Air transport	89	87.8	-9.8	-1.4	1.1
52 Warehousing and support activities for transportation	366	116.5	4.1	-5.7	-0.1
53 Postal and courier activities	66	93.1	-1.6	-0.6	-1.9
J Information and communication	1000	115.6	-0.7	-0.9	0.4
58 Publishing activities	153	106.8	0.2	-3.5	0.8
59 Motion picture, video and television programme production...	73	105.3	-6.6	0.6	3.4
60 Programming and broadcasting activities	60	114.1	1.1	7.4	-0.7
61 Telecommunications	399	105.3	-2.0	-1.2	-1.2
62 Computer programming, consultancy and related activities	261	134.3	0.9	-0.5	1.6
63 Information service activities	54	142.4	2.3	-4.0	0.8
L Real estate activities	1000	112.2	-2.1	-0.2	2.0
681 Buying and selling of own real estate	82	128.8	-3.4	5.1	2.4
682 Renting and operating of own or leased real estate	734	107.2	-2.7	-1.5	0.6
683 Real estate activities on a fee or contract basis	184	124.7	0.8	2.2	7.2
M+N Business support activities	1000	123.7	0.4	-3.1	2.2
M Professional, scientific and technical activities	585	119.8	-1.0	-3.3	3.0
69 Legal and accounting activities	90	118.8	-0.9	0.4	1.3
70 Activities of head offices...	241	121.5	-0.5	-5.8	4.2
71 Architectural and engineering activities...	142	115.7	-2.7	-3.0	3.0
72 Scientific research and development	24	121.4	5.7	-1.0	0.4
73 Advertising and market research	63	109.3	0.0	-0.3	1.6
74 Other professional, scientific and technical activities	19	161.0	-5.8	-1.4	3.5
75 Veterinary activities	6	131.2	0.3	-2.5	3.6
N Administrative and support service activities	415	129.2	2.3	-2.9	1.1
77 Rental and leasing activities	120	120.8	0.3	-2.3	0.9
78 Employment activities	74	135.9	2.0	-2.0	1.9
79 Travel agency, tour operator...	35	126.9	8.0	-5.0	3.1
80 Security and investigation activities	20	134.5	1.3	-1.5	2.4
81 Services to buildings and landscape activities	48	124.3	1.1	-2.4	4.1
82 Office administrative, office support and other business support activities	118	135.3	3.5	-3.8	-0.9

(1) Quarter-on-quarter: last three months / previous three months.

Source: INSEE

For further information :

- Complementary data (long series) and metadata (methodology, linked internet pages, etc.) are available on the web page of the index: <https://www.insee.fr/en/statistiques?debut=0&theme=30&conjoncture=19>
- Historical data are available on BDM: [G1795](#), [G1797](#), [G1798](#), [G1800](#), [G1801](#).
- Press contact: bureau-de-presse@insee.fr
-  Follow us on Twitter @InseeFr_News: https://twitter.com/InseeFr_News

Next issue: 31 January 2017 at 12:00