

# Informations Rapides

22 décembre 2016 - n° 339



## ■ Turnover in industry and construction – October 2016

### In October 2016, the turnover fell again in the manufacturing industry (–0.4%)

Every index in this issue is in value (tax excluded), seasonally and working day adjusted. The commentary shows variations of subsections by decreasing contribution. The contribution of a subsection depends on the extent of the change and on its weight.

In October 2016, the turnover decreased again in the *manufacturing industry* (–0.4% as in September). The export turnover remained virtually stable (–0.1% after +0.1%).

In the *industry* as a whole, the turnover also went on falling but slightly (–0.2% after –0.7% in September).

#### Rise over the last three months (+0.9%)

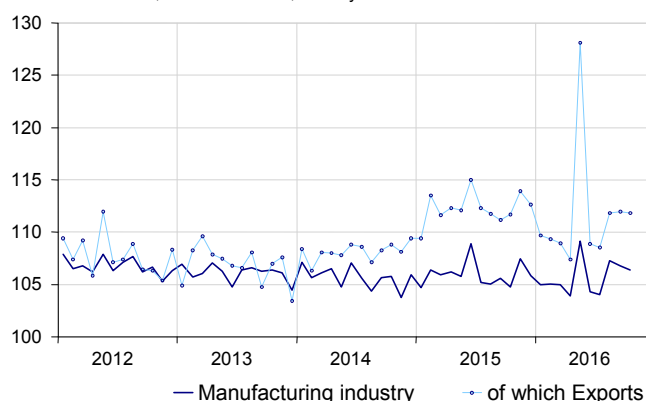
Over the last three months, the turnover rose in the *manufacturing industry* (+0.9%) as well as in the *industry* as a whole (+1.2%). Within the *manufacturing industry*, the turnover increased in the “*other manufacturing*” sector (+1.1%), in the *manufacture of coke and refined petroleum products* (+9.4%), in the *manufacture of food products and beverages* (+1.8%) and in that of *machinery and equipment goods* (+1.0%). On the other hand, it fell sharply in the *manufacture of transport equipment* (–2.5%).

#### Increase compared to the previous year (+1.6%)

In the *manufacturing industry* as well as in the *industry* as a whole, the turnover of the last three months was higher than in the same three months of the previous year (+1.6%). Over this period, the turnover rose strongly in the *manufacture of transport equipment* (+10.0%) and more slightly in the *manufacture of food products and beverages* (+1.5%) and in the *machinery and equipment goods* (+0.6%). By contrast, it decreased in the “*other manufacturing*” sector (–0.8%) and in the *manufacture of coke and refined petroleum products* (–1.4%).

#### Turnover in manufacturing industry

Turnover indexes, SA-WDA value, Base year 2010



Source: INSEE

#### Variation of the turnover in industry and construction

SA-WDA value, Base year 2010

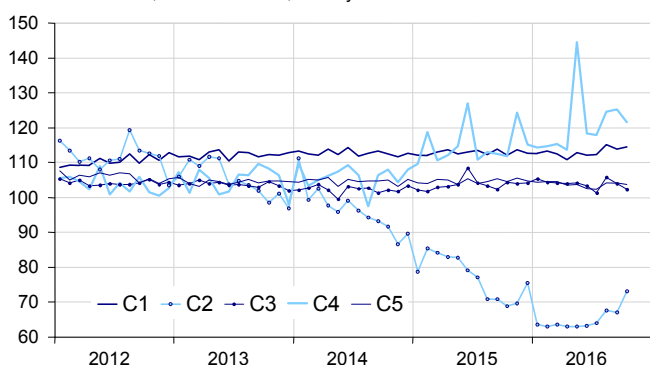
NA : A 10, (A 17)	Weight	Change in %			
		Oct./ Sept.	Sept./ Aug.	q-o-q (1)	y-o-y (2)
<b>BE: INDUSTRY</b>	<b>10000</b>	<b>–0.2</b>	<b>–0.7</b>	<b>1.2</b>	<b>1.6</b>
<b>CZ: MANUFACTURING INDUSTRY</b>	<b>8346</b>	<b>–0.4</b>	<b>–0.4</b>	<b>0.9</b>	<b>1.6</b>
Of which Exports	2677	–0.1	0.1	–2.9	0.3
(C1): Manufacture of food products and beverages	1685	0.6	–1.1	1.8	1.5
(C2): Manufacture of coke and refined petroleum products	561	9.0	–0.9	9.4	–1.4
(C3): Machinery and equipment goods	953	–1.5	–1.7	1.0	0.6
(C4): Manufacture of transport equipment	1265	–2.8	0.4	–2.5	10.0
(C5): Other manufacturing	3881	–0.4	0.0	1.1	–0.8
<b>DE: Mining and quarrying; energy; water supply; waste management</b>	<b>1654</b>	<b>0.5</b>	<b>–1.9</b>	<b>2.3</b>	<b>1.7</b>
<b>FZ: CONSTRUCTION</b>	<b>10000</b>	<b>–0.4</b>	<b>1.2</b>	<b>1.2</b>	<b>0.5</b>

(1) Quarter-on-quarter: last three months / previous three months  
(2) Year-on-year: last three months / same three months of previous year  
The codes correspond to different levels of aggregation of the NACE classification.

Source: INSEE

## Turnover in manufacturing industry by sector

Turnover indexes, SA-WDA value, Base year 2010



Source: INSEE

### Significant decline in transport equipment (-2.8%)

The turnover in the *manufacture of transport equipment* fell back markedly in October (-2.8%) after two months of increase (+0.4 % in September et +5.6% in August). The fall was due to a significant downturn in the *manufacture of other transport equipment* (-8.5% after +9.2%) which was not offset by the strong rebound in the *manufacture of motor vehicles, trailers and semi-trailers* (+4.7% after -9.3%).

### Decrease in "other manufacturing" (-0.4%)

The turnover in "other manufacturing" declined in October (-0.4%) after a stability in September. It shrank in the *other manufacturing; repair and installation of machinery and equipment* (-1.7%), in the *manufacture of chemicals and chemical products* (-0.8%) and in the *manufacture of rubber and plastics products, and other non-metallic mineral products* (-0.9%). By contrast, it rose again in the *manufacture of basic metals and fabricated metal products, except machinery and equipment* (+1.2%).

### Further decrease in the machinery and equipment goods (-1.5%)

The turnover in the *machinery and equipment goods* decreased again in October (-1.5% after -1.7% in September). It declined in the three sectors of the *manufacture of machinery and equipment*, especially in the *manufacture of computer, electronic and optical products* (-3.6%).

### Sharp rebound in coke and refined petroleum products (+9.0%)

In October, the turnover recovered vigorously in the *manufacture of coke and refined petroleum products* (+9.0% after -0.9%).

### Recovery in the food and beverage industry (+0.6%)

In October, the turnover picked up in the *manufacture of food products and beverages* (+0.6% after -1.1%).

#### • Revisions:

In the *industry* as a whole, the variation in the turnover for September 2016 has been lowered by 0.1 points, at -0.7% instead of -0.6% published previously. It is unchanged in the *manufacturing industry* (-0.4%).

## Indexes of turnover in industry and construction

SA-WDA, based year 2010

Industries:	Weight	Oct. 2016	Change in %		
			Oct./Sept.	Sep./Aug.	q-o-q (1)
<b>BE: INDUSTRY</b>	<b>10000</b>	<b>108.1</b>	<b>-0.2</b>	<b>-0.7</b>	<b>1.2</b>
<b>CZ: MANUFACTURING INDUSTRY</b>	<b>8346</b>	<b>106.4</b>	<b>-0.4</b>	<b>-0.4</b>	<b>0.9</b>
of which Exports	2677	111.8	-0.1	0.1	-2.9
<b>(C1): Man. of food products and beverages</b>	<b>1685</b>	<b>114.5</b>	<b>0.6</b>	<b>-1.1</b>	<b>1.8</b>
of which Exports	285	117.9	-0.5	0.0	2.8
<b>(C2): Man. of coke and refined petroleum products</b>	<b>561</b>	<b>73.2</b>	<b>9.0</b>	<b>-0.9</b>	<b>9.4</b>
<b>(C3): Machinery and equipment goods</b>	<b>953</b>	<b>102.4</b>	<b>-1.5</b>	<b>-1.7</b>	<b>1.0</b>
of which Exports	469	101.4	1.0	-2.4	0.4
[CI] Man. of computer, electronic and optical products	306	100.5	-3.6	-5.0	1.8
[CJ] Man. of electrical equipment	245	98.4	-0.5	-1.8	3.2
[CK] Man. of machinery and equipment n.e.c.	402	106.4	-0.6	1.1	-0.7
<b>(C4): Man. of transport equipment</b>	<b>1265</b>	<b>121.6</b>	<b>-2.8</b>	<b>0.4</b>	<b>-2.5</b>
of which Exports	617	125.5	-4.7	2.2	5
[CL1] Man. of motor vehicles, trailers and semi-trailers	702	101.4	4.7	-9.3	1.1
[CL2] Man. of other transport equipment	562	146.8	-8.5	9.2	-5.3
<b>(C5): Other manufacturing</b>	<b>3881</b>	<b>103.8</b>	<b>-0.4</b>	<b>0.0</b>	<b>1.1</b>
of which Exports	1237	107.7	0.8	-0.1	1.8
[CB] Man. of textiles, wearing apparel, leather and related products	188	109.7	1.0	-0.9	-0.4
[CC] Man. of wood and paper products; printing and reproduction of recorded media	436	95.6	-0.5	-0.2	0.1
[CE] Man. of chemicals and chemical products	745	100.0	-0.8	0.1	3.5
[CF] Man. of basic pharmaceutical products and pharmaceutical preparations	304	106.6	-0.4	-6.5	-0.7
[CG] Man. of rubber and plastics products, and other non-metallic mineral products	629	101.4	-0.9	0.0	-0.1
[CH] Man. of basic metals and fabricated metal products, except machinery and equipment	926	101.3	1.2	0.9	1.5
[CM] Other manufacturing; repair and installation of machinery and equipment	653	116.3	-1.7	1.8	1.1
<b>DE: Mining and quarrying; energy, water supply, sewerage, waste management</b>	<b>1654</b>	<b>116.4</b>	<b>0.5</b>	<b>-1.9</b>	<b>2.3</b>
[BZ] Mining and quarrying	70	88.7	-2.1	-0.3	1.2
[DZ] Electricity, gas, steam and air-conditioning supply	1205	119.9	0.8	-1.1	2.5
[EZ] Water supply; sewerage, waste management and remediation	379	110.4	0.1	-5.1	1.8
<b>FZ: CONSTRUCTION</b>	<b>10000</b>	<b>103.7</b>	<b>-0.4</b>	<b>1.2</b>	<b>1.2</b>

(1) Quarter-on-quarter: last three months / previous three months

Source: INSEE

### Revisions of variations

(in point %)

	Sept./Aug.	Aug./July	July/June	Q3 2016 / Q2 2016	2015/2014
<b>Industry (BE)</b>	<b>-0.09</b>	<b>0.11</b>	<b>0.05</b>	<b>0.11</b>	<b>-0.01</b>
raw serie	-0.18	0.07	-0.03	-0.06	0.00
SA-WDA parameters	0.09	0.04	0.08	0.18	-0.01
<b>Manufacturing industry (CZ)</b>	<b>-0.01</b>	<b>0.12</b>	<b>0.03</b>	<b>0.11</b>	<b>-0.01</b>
raw serie	-0.06	0.09	-0.03	-0.02	0.00
SA-WDA parameters	0.05	0.03	0.06	0.14	-0.01

How to read it: in the manufacturing industry, the SA-WDA variation between September and October 2016 is revised by -0.01 points: -0.06 points are due to the raw series' revision and +0.05 to the new calculation of the SA-WDA parameters.

Source: INSEE

### For further information:

- Complementary data (long series) and metadata (methodology, linked internet pages, etc.) are available on the web page of this index: <https://www.insee.fr/en/statistiques?debut=0&theme=30&conjoncture=6>
- Historical data are available on the BDM: [G1781](#), [G1782](#), [G1783](#), [G1784](#), [G1785](#), [G1786](#) and [G1787](#)
- Press contact: [bureau-de-presse@insee.fr](mailto:bureau-de-presse@insee.fr)
- Follow us on Twitter @InseeFr\_News: [https://twitter.com/InseeFr\\_News](https://twitter.com/InseeFr_News)

Next issue: 31 January 2017 at 12.00