

Informations Rapides

30 novembre 2016 - n° 315



■ Turnover in industry and construction – September 2016

In September 2016, the turnover fell back in the manufacturing industry (–0.4%)

Every index in this issue is in value (tax excluded), seasonally and working day adjusted. The commentary shows variations of subsections by decreasing contribution. The contribution of a subsection depends on the extent of the change and on its weight.

In September 2016, the turnover in the *manufacturing industry* fell back (–0.4%) after a sharp increase in August (+3.0%). The export turnover rose again but at a lower pace than in the previous month (+0.4% after +3.0%). In the *industry* as a whole, the turnover fell back as well (–0.6% after +2.9%).

Virtual stability over the third quarter (+0.1%)

Over the third quarter 2016, the turnover remained virtually stable in the *manufacturing industry* (+0.1% compared to the second quarter). It rose slightly in the *industry* as a whole (+0.4%) owing to the *mining and quarrying: energy, water supply, sewerage, waste management* (+1.8%). Within the *manufacturing industry*, the turnover declined in the *manufacture of transport equipment* (–2.5%) whereas it grew in the *manufacture of food products and beverages* (+1.7%), in the *manufacture of coke and refined petroleum products* (+2.8%) and, to a lesser extent, in the “*other manufacturing*” sector (+0.2%). It remained virtually stable in the *machinery and equipment goods* (+0.1%)

Rise compared to the previous year (+0.7%)

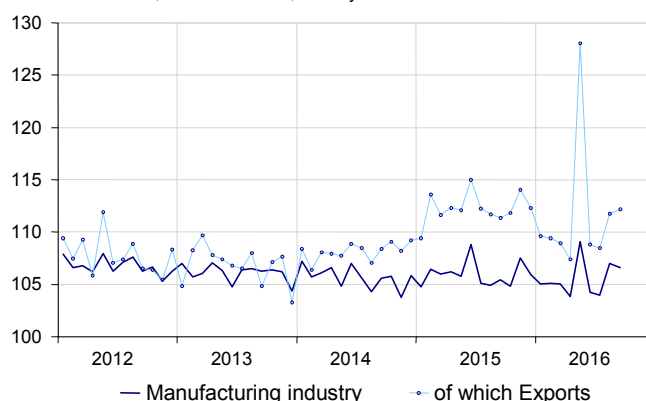
The turnover of the third quarter 2016 rose compared to the third quarter of 2015 in the *manufacturing industry* (+0.7%) as in *the industry* as a whole (+0.6%). Over this period, the turnover soared in the *manufacture of transport equipment* (+9.1%) and rose slightly in the *manufacture of food products and beverages* (+0.3%) and in the *machinery and equipment goods* (+0.4%). Conversely, it decreased strongly in the *manufacture of coke and refined petroleum products* (–9.9%) and, to a lesser extent, in the “*other manufacturing*” sector (–1.0%).

Decline in food products and beverages (–1.1%)

The turnover fell back in the *manufacture of food products and beverages* in September (–1.1%) after two consecutive months of increase (including +2.3% in August).

Turnover in manufacturing industry

Turnover indexes, SA-WDA value, Base year 2010



Source: INSEE

Variation of the turnover in industry and construction

SA-WDA value, Base year 2010

NA : A 10, (A 17)	Weight*	Change in %			
		Sept./ Aug.	Aug./ July	q-o-q (1)	y-o-y (2)
BE: INDUSTRY	10000	–0.6	2.9	0.4	0.6
CZ: MANUFACTURING INDUSTRY	8346	–0.4	3.0	0.1	0.7
Of which Exports	2677	0.4	3.0	–3.4	–0.9
(C1): Manufacture of food products and beverages	1685	–1.1	2.3	1.7	0.3
(C2): Manufacture of coke and refined petroleum products	561	0.4	3.2	2.8	–9.9
(C3): Machinery and equipment goods	953	–1.5	4.5	0.1	0.4
(C4): Manufacture of transport equipment	1265	0.4	5.5	–2.5	9.1
(C5): Other manufacturing	3881	–0.2	1.9	0.2	–1.0
DE: Mining and quarrying; energy; water supply; waste management	1654	–1.5	2.5	1.8	0.3
FZ: CONSTRUCTION	10000	1.1	3.7	–1.0	–0.3

* 10000=B...E and F

(1) Quarter-on-quarter: last three months / previous three months

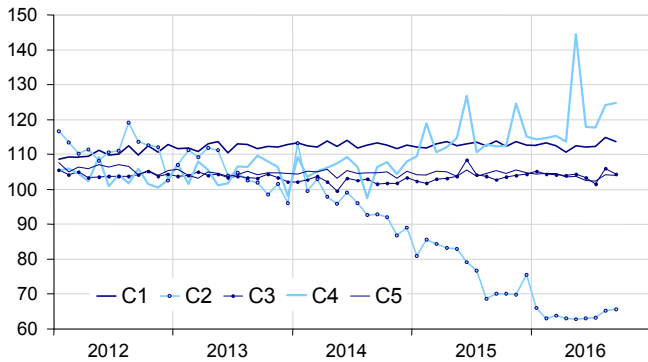
(2) Year-on-year: last three months / same three months of previous year

The codes correspond to different levels of aggregation of the NACE classification.

Source: INSEE

Turnover in manufacturing industry by sector

Turnover indexes, SA-WDA value, Base year 2010



Source: INSEE

Contraction in machinery and equipment goods (-1.5%)

The turnover of *machinery and equipment goods* shrank in September (-1.5%) after a sharp rebound in August (+4.5%). It fell back in that of *computer, electronic and optical products* (-4.5% after +7.8%) and in the *manufacture of electrical equipment* -1.6% after +8.9%). By contrast, it picked up in the *manufacture of machinery and equipment n.e.c.* (+1.0% after -0.3%).

Slight fall in "other manufacturing" (-0.2%)

The turnover in "other manufacturing" decreased slightly in September (-0.2%) after a significant increase in August (+1.9%). It shrank in *pharmaceuticals* (-5.4% after +6.7%) and the *manufacture of textiles, wearing apparel, leather and related products* (-1.9% after +1.2%). By contrast, it rose again in *other manufacture, including repair and installation* (+1.2% after +3.5%) and the *manufacture of basic metals and fabricated metal products* (+0.5% after +1.1%).

Increase in transport equipment (+0.4%)

The turnover in the *manufacture of transport equipment* slowed significantly in September (+0.4%) after a sharp rebound in August (+5.5%). It accelerated in the *manufacture of other transport equipment* (+9.4% after +4.0%) but fell back strongly in the *manufacture of motor vehicles* (-9.4% after +7.2%).

Further increase in coke and refined petroleum products (+0.4%)

In September, the turnover grew again in *coke and refined petroleum products* but more moderately than in August (+0.4% after +3.2%).

• Revisions:

In the *manufacturing industry*, the variation in the turnover in August has been lowered by 0.2 points, at +3.0% instead of +3.2% published previously.

Indexes of turnover in industry and construction

SA-WDA, based year 2010

Industries:	Weight*	Sept. 2016	Change in %		
			Sept./ Aug.	Aug./ July	q-o-q (1)
BE: INDUSTRY	10000	108.2	-0.6	2.9	0.4
CZ: MANUFACTURING INDUSTRY	8346	106.6	-0.4	3.0	0.1
of which Exports	2677	112.2	0.4	3.0	-3.4
(C1): Man. of food products and beverages	1685	113.6	-1.1	2.3	1.7
of which Exports	285	118.6	0.0	3.0	2.9
(C2): Man. of coke and refined petroleum products	561	65.6	0.4	3.2	2.8
(C3): Machinery and equipment goods	953	104.5	-1.5	4.5	0.1
of which Exports	469	101.5	-1.3	1.7	0.8
[CI] Man. of computer, electronic and optical products	306	105.6	-4.5	7.8	3.1
[CJ] Man. of electrical equipment	245	99.0	-1.6	8.9	-0.7
[CK] Man. of machinery and equipment n.e.c.	402	107.0	1.0	-0.3	-1.6
(C4): Man. of transport equipment	1265	124.7	0.4	5.5	-2.5
of which Exports	617	132.1	2.1	5.6	2
[CL1] Man. of motor vehicles, trailers and semi-trailers	702	96.7	-9.4	7.2	0.6
[CL2] Man. of other transport equipment	562	159.7	9.4	4.0	-5.1
(C5): Other manufacturing	3881	104.1	-0.2	1.9	0.2
of which Exports	1237	107.0	0.2	2.3	0.2
[CB] Man. of textiles, wearing apparel, leather and related products	188	108.4	-1.9	1.2	0.1
[CC] Man. of wood and paper products; printing and reproduction of recorded media	436	96.2	-0.2	1.1	-0.2
[CE] Man. of chemicals and chemical products	745	101.0	0.2	1.2	3.5
[CF] Man. of basic pharmaceutical products and pharmaceutical preparations	304	107.9	-5.4	6.7	-1.6
[CG] Man. of rubber and plastics products, and other non-metallic mineral products	629	102.6	0.1	0.6	0.1
[CH] Man. of basic metals and fabricated metal products, except machinery and equipment	926	99.4	0.5	1.1	-0.5
[CM] Other manufacturing; repair and installation of machinery and equipment	653	117.9	1.2	3.5	-0.9
DE: Mining and quarrying; energy, water supply, sewerage, waste management	1654	116.0	-1.5	2.5	1.8
[BZ] Mining and quarrying	70	90.8	-0.1	-0.2	2.6
[DZ] Electricity, gas, steam and air-conditioning supply	1205	119.3	-0.5	1.7	1.8
[EZ] Water supply, sewerage, waste management and remediation	379	110.3	-4.9	6.0	1.6
FZ: CONSTRUCTION	10000	104.0	1.1	3.7	-1.0

* 10000=B...E and F

(1) Quarter-on-quarter: last three months / previous three months

Source: INSEE

Revisions of variations

(in point %)

	Aug./ July	July/ June	June/ May	Q2 2016/ Q1 2016	2015/ 2014
Industry (BE)	-0.23	0.43	-0.09	-0.14	0.00
raw serie	-0.21	0.26	-0.06	-0.24	0.00
SA-WDA coeff.	-0.02	0.17	-0.03	0.10	0.00
Manufacturing industry (CZ)	-0.22	0.46	-0.10	-0.18	0.00
raw serie	-0.41	0.30	-0.08	-0.29	0.00
SA-WDA coeff.	0.18	0.16	-0.02	0.12	0.00

How to read it: in the manufacturing industry, the SA-WDA variation between July and August 2016 is revised by -0.22 points: +0.41 points are due to the revision of the raw series and -0.18 points to the new calculation of the SA-WDA parameters.
Source: INSEE

For further information:

- Complementary data (long series) and metadata (methodology, linked internet pages, etc.) are available on the web page of this index: <https://www.insee.fr/en/statistiques?debut=0&theme=30&conjoncture=6>
- Historical data are available on the BDM: [G1781](#), [G1782](#), [G1783](#), [G1784](#), [G1785](#), [G1786](#) and [G1787](#)
- Press contact: bureau-de-presse@insee.fr
- Follow us on Twitter @InseeFr_News: https://twitter.com/InseeFr_News

Next issue: 22 December 2016 at 12.00