

# Informations Rapides

16 novembre 2016 - n° 299



## ■ Tourism occupancy in hotels, campsites and holiday and other short-stay accommodation in metropolitan France – Q3 2016

### In Q3 2016, the fall in tourist nights eased (–1.6% y-o-y, after –5.2%)

#### Tourist nights continued to decline in metropolitan France

In the third quarter of 2016, throughout metropolitan France, the number of overnight stays in tourist collective accommodation continued to fall (–1.6% compared to the same period in 2015) but less than in the previous quarter (–5.2%). This decline was significant for hotels and for holiday and other short-stay accommodation, while occupancy increased slightly in campsites. Overall, the decrease in overnight stays of foreign customers (–5.7%) eased compared with the previous quarter (–9.2%), and the nights spent by French customers bounced slightly (+0.4% after –3.1%).

#### Foreign customers continued to desert hotels in the agglomeration of Paris

The decline in overnight stays in hotels persisted in the third quarter (–4.1% year-on-year after –3.6% in Q2). Occupancy fell in the agglomeration of Paris (–14.3%) and in the coastlines (–1.2%), probably due to the terrorist attacks at the end of 2015 in Paris and Saint-Denis and then in Nice on 14 July. This decrease was sharper for foreign customers (–10.6% after –7.7%). They continued to desert the hotels of the agglomeration of Paris (–18.0%), and avoid coastlines (–7.0%). Hotel occupancy increased slightly in the urban areas of province, rural and mountainous areas. Overall, the room occupancy rate (65.4%) fell by 2.6 points year-on-year.

#### Overnight stays in holiday and other short-stay accommodation went also down

The decline in HOSSA was less significant than in Q2 (–3.4% year-on-year after –6.3%), especially for foreign customers (–12.1% after –21.0%). Overnight stays fell in almost all areas, with the exception of rural areas which went up sharply (+10.0%), attracting resident as not resident tourists. Given that the park declined, the occupancy rate (68.1%) decreased only by 0.4 points year-on-year.

#### Overnight stays in Q3 2016 \*

	Nights of the quarter		Year-on-year (%) (Q/Q-4)	
	Total nights (millions)	% of foreign nights	Total nights	Foreign nights
<b>Total</b>	<b>192.4</b>	<b>31.2</b>	<b>–1.6</b>	<b>–5.7</b>

<b>Hotels</b>	<b>64.3</b>	<b>38.5</b>	<b>–4.1</b>	<b>–10.6</b>
Unclassified	6.0	28.1	–10.5	–14.9
1 and 2 stars	18.7	25.9	–2.0	–8.9
3 stars	24.3	39.6	–3.9	–11.5
4 and 5 stars	15.3	56.3	–4.3	–9.8

hotel chain	29.9	39.8	–4.6	–12.0
independent hotel	34.4	37.4	–3.7	–9.3

Agglo. of Paris	16.0	62.7	–14.3	–18.0
coastlines	14.1	33.3	–1.2	–7.0
mountain	8.9	25.3	0.2	0.5
other urban area	20.5	31.8	0.2	–5.2
other rural area	4.8	26.6	0.4	–3.5

<b>Holiday and other short-stay accommodation</b>	<b>34.6</b>	<b>18.7</b>	<b>–3.4</b>	<b>–12.1</b>
Tourism residences	23.6	23.2	–4.8	–12.6
Holiday villages	9.9	8.0	0.0	–9.9
Other	1.1	19.0	–2.7	–7.5

Agglo. of Paris	2.1	50.8	–13.6	–18.2
coastlines	14.6	16.2	–5.7	–14.2
mountain	9.2	12.2	–3.2	–12.0
other urban area	4.5	22.9	–1.7	–14.1
other rural area	4.2	21.1	10.0	7.4

<b>Campsites</b>	<b>93.4</b>	<b>30.8</b>	<b>1.0</b>	<b>0.8</b>
Unclassified	5.2	29.9	–6.1	–4.1
1 and 2 stars	13.3	25.6	–0.7	–2.7
3 stars	31.2	30.0	0.4	–1.1
4 and 5 stars	43.8	33.1	2.8	3.6

bare pitches	48.4	38.8	–1.2	–2.4
pitches with rental accommodation	45.0	22.3	3.4	7.5

coastlines except coast	52.3	25.7	–0.8	0.7
	41.1	37.4	3.3	0.9

Reference area : Metropolitan France

\* provisional data

Source: INSEE, in partnership with the Regional Committees of tourism (CRT) and DGE

### Occupancy in high-end campsites held up

Overnight stays in campsites grew (+1.0% year-on-year) at practically the same pace for French and foreign customers. Occupancy was driven by the high-end campsites (+2.8% for 4-5 stars). The pitches with rental accommodation were much demanded. However, the decline in tourist nights spent in coastlines also affected campsites situated there (-0.8% over one year).

### The decline in occupancy eased in September

Overnight stays decreased sharply in July (-1.6% year-on-year) and August (-1.8%), especially on the coastlines and in Île-de-France. The attack in Nice on 14 July weighted particularly heavily on the occupancy in the Provence-Alpes-Côte d'Azur region. In September, the overall decrease eased (-1.1% year-on-year).

### Average length of stay and occupancy

	Average length of stay (days)		Occupancy rate ** in %	
	2015	2016	2015	2016
	Q3	Q3 *	Q3	Q3 *
<b>Hotels</b>	1.8	1.8	68.0	65.4
<b>HOSSA</b>	4.9	4.7	68.5	68.1
<b>Campsites</b>	5.7	5.6	47.3	47.5
<i>bare pitches</i>	4.6	4.5	39.0	39.2
<i>pitches with rental accommodation</i>	7.9	7.7	67.6	66.7

\* provisional data

\*\* The occupancy rate is calculated for hotels in rooms, in pitches for campsites and in lodging units (rooms, apartments, dormitories) for holiday and other short-stay accommodation

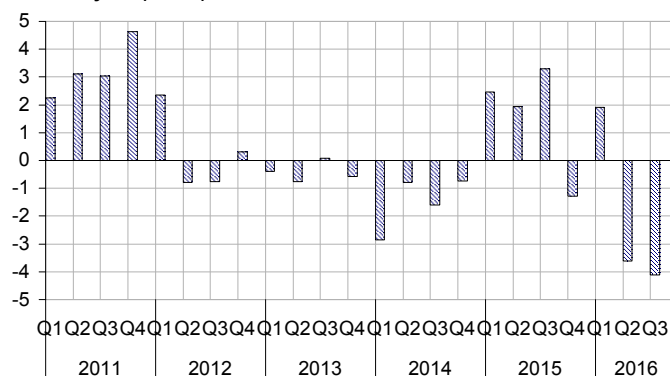
Source: INSEE, in partnership with the Regional Committees of tourism (CRT) and DGE

### Revisions

Compared to the previous publication, the overall variation in the number of overnight stays in Q2 2016 has been revised downwards (-5.2% instead of -4.8%) due to the integration of data known in the meantime. The decrease has been lowered by 0.1 points in hotels (-3.6% instead of -3.5%), by 1.4 points in campsites (-8.2% instead of -6.8%) and raised by 0.1 points in HOSSA (-6.3% instead of -6.4%).

### Overnight stays in hotels

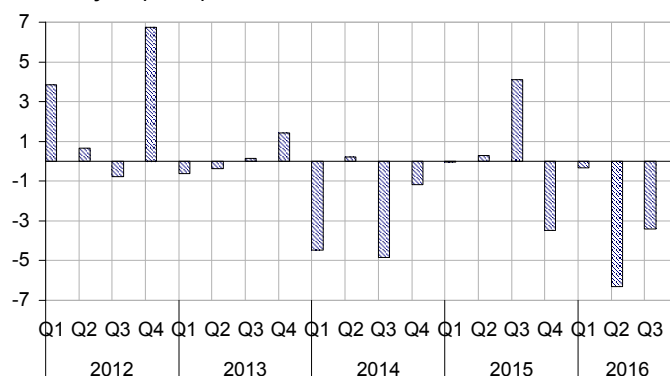
Year-on-year (Q/Q-4) in %



Source: INSEE, in partnership with the Regional Committees of tourism (CRT) and DGE

### Overnight stays in HOSSA

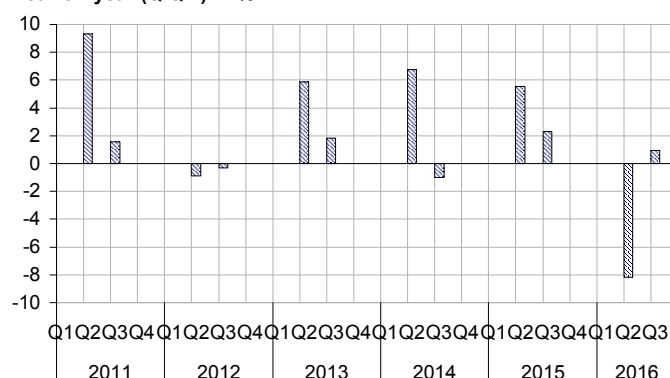
Year-on-year (Q/Q-4) in %



Source: INSEE, in partnership with the Regional Committees of tourism (CRT) and DGE

### Overnight stays in campsites

Year-on-year (Q/Q-4) in %



Source: INSEE, in partnership with the Regional Committees of tourism (CRT) and DGE

### For more information :

INSEE conducts monthly surveys on attendance in collective tourist accommodation: hotels, campsites and holiday and other short-stay accommodation (HOSSA). These include tourist homes (including "aparthotel"), holiday villages, family homes and youth hostels. They do not include accommodation offered by private persons. For campsites, questioning concerns only the months of May to September.

- Complementary data (long series, monthly data) and metadata (methodology, linked internet pages, etc.) are available on the web page of this index: <http://www.insee.fr/fr/themes/info-rapide>
- Historical data are available on the BDM: [G1610](#), [G1611](#)
- Press contact : [bureau-de-presse@insee.fr](mailto:bureau-de-presse@insee.fr)
- Follow us on [Twitter](#) @InseeFr\_News [https://twitter.com/InseeFr\\_News](https://twitter.com/InseeFr_News)

Next issue: 12 February 2017 at 12:00