

Informations Rapides

28 octobre 2016 - n° 287



■ Turnover in industry and construction – August 2016

In August 2016, the turnover recovered strongly in the manufacturing industry (+3.2%)

Every index in this issue is in value (tax excluded), seasonally and working day adjusted. The commentary shows variations of subsections by decreasing contribution. The contribution of a subsection depends on the extent of the change and on its weight.

In August 2016, the turnover in the manufacturing industry recovered strongly (+3.2% after -0.7% in July). Export turnover picked up especially (+3.1% after -0.4%). In the *industry* as a whole, the turnover also recovered to a similar extent (+3.1% after -0.3%).

Fall over the last three months (-0.9%)

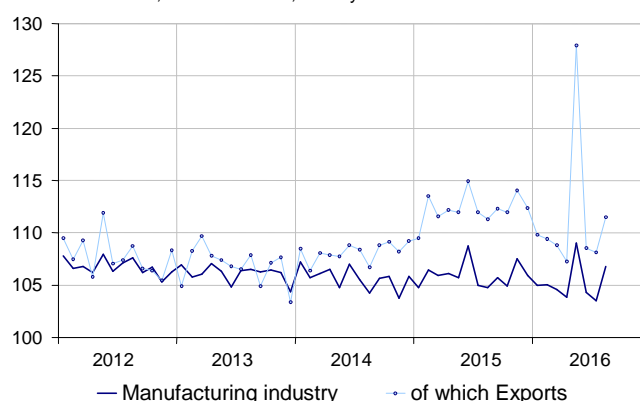
Over the last three months, the turnover shrank in the *manufacturing industry* (-0.9%) and in the *industry* as a whole (-0.6%). It decreased sharply in the *manufacturing of transport equipment* (-4.2%) and, to a lesser degree, in "other manufacturing" (-0.8%) and in *machinery and equipment goods* (-0.4%). On the other hand, the turnover rose in the *manufacturing of food products and beverages* (+1.2%) and in that of *coke and refined petroleum products* (+0.5%).

Decline compared to the previous year (-1.2%)

The turnover declined over the last three months, compared to the same three months of the previous year in the *manufacturing industry* (-1.2%) as in the *industry* as a whole (-1.3%). Over this period, the turnover tumbled in the *manufacture of coke and refined petroleum products* (-14.9%). It declined in "other manufacturing" (-1.7%) and in the *manufacture of machinery and equipment goods* (-1.7%). Conversely, it advanced in the *manufacturing of transport equipment* (+2.4%). It was virtually stable in the *manufacture of food products and beverages* (+0.1%).

Turnover in manufacturing industry

Turnover indexes, SA-WDA value, Base year 2010



Source: INSEE

Variation of the turnover in industry and construction

SA-WDA value, Base year 2010

NA : A 10, (A 17)	Weight**	Change in %			
		Aug./ July	July/ June	q-o-q (1)	y-o-y (2)
BE: INDUSTRY	10000	3.1	-0.3	-0.6	-1.3
CZ: MANUFACTURING INDUSTRY	8346	3.2	-0.7	-0.9	-1.2
Of which Exports	2677	3.1	-0.4	-4.6	-3.0
(C1): Manufacture of food products and beverages	1685	2.6	0.1	1.2	0.1
(C2): Manufacture of coke and refined petroleum products	561	3.2	0.0	0.5	-14.9
(C3): Machinery and equipment goods	953	4.0	-1.5	-0.4	-1.7
(C4): Manufacture of transport equipment	1265	5.0	-0.9	-4.2	2.4
(C5): Other manufacturing	3881	2.6	-1.0	-0.8	-1.7
DE: Mining and quarrying; energy; water supply; waste management	1654	2.8	1.7	0.8	-1.8
FZ: CONSTRUCTION	10000	2.7	-1.7	-1.6	-1.8

** 10000=B...E and F

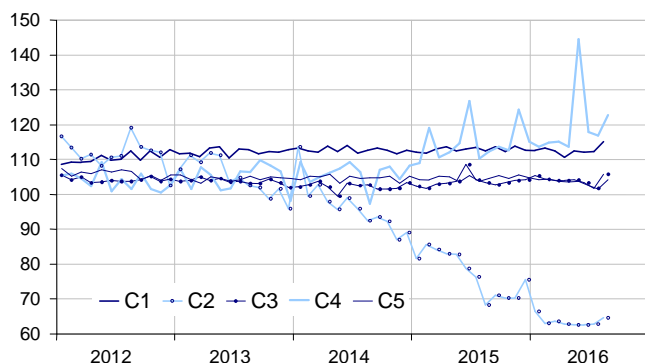
(1) Quarter-on-quarter: last three months / previous three months

(2) Year-on-year: last three months / same three months of previous year
The codes correspond to different levels of aggregation of the NACE classification.

Source: INSEE

Turnover in manufacturing industry by sector

Turnover indexes, SA-WDA value, Base year 2010



Source: INSEE

Strong rebound in the manufacture of transport equipment (+5.0%)

The turnover in the manufacture of transport equipment rebounded strongly in August (+5.0% after -0.9% in July). It picked up in the manufacture of motor vehicles, trailers and semi-trailers (+6.4%) and, to a lesser extent in that of other transport equipment (+3.8%).

Sharp upturn in machinery and equipment goods (+4.0%)

The turnover of machinery and equipment goods surged in August (+4.0%) after two months of decline (-1.5% in July and -0.9% in June). It accelerated in the manufacture of computer, electronic and optical products (+6.4% after +0.4%) and bounced back markedly in the manufacture of electrical equipment (+9.1% after -6.0%). By contrast, it declined again slightly in the manufacturing of machinery and equipment n.e.c. (-0.4% as in July).

Rebound in "other manufacturing" (+2.6%)

The turnover in "other manufacturing" recovered sharply in August (+2.6% after -1.0% in July). In particular, it rose strongly in the manufacture of chemicals and chemical products (+4.4% after +3.0%). It recovered sharply in the manufacture of basic pharmaceutical products and pharmaceutical preparations (+8.0% after -6.6%) and in the other manufacturing; repair and installation of machinery and equipment sector (+3.4% after -3.3%). The rebound is more moderate in the manufacture of basic metals and fabricated metal products (+1.1% after -1.1%).

Rise in food products and beverages (+2.6%)

The turnover rose in the manufacture of food products and beverages in August (+2.6%) after a near stability in July (+0.1%).

Recovery in coke and refined petroleum products (+3.2%)

In August, the turnover picked up in coke and refined petroleum products (+3.2%) after a stability in July, preceded by three consecutive months of growth.

Revisions:

In the manufacturing industry, the variation in turnover for July 2016 is unchanged, at -0.7%. It has been lowered by 0.1 points in the industry as a whole.

Indexes of turnover in industry and construction

SA-WDA, based year 2010

Industries:	Weight*	Aug. 2016	Change in %		
			Aug./ July	July/ June	q-o-q (1)
BE: INDUSTRY	10000	108.6	3.1	-0.3	-0.6
CZ: MANUFACTURING INDUSTRY	8346	106.8	3.2	-0.7	-0.9
of which Exports	2677	111.5	3.1	-0.4	-4.6
(C1): Man. of food products and beverages	1685	115.1	2.6	0.1	1.2
of which Exports	285	118.7	3.4	-0.9	2.5
(C2): Man. of coke and refined petroleum products	561	64.7	3.2	0.0	0.5
(C3): Machinery and equipment goods	953	105.9	4.0	-1.5	-0.4
of which Exports	469	102.6	1.6	0.7	0.3
[CI] Man. of computer, electronic and optical products	306	109.8	6.4	0.4	1.8
[CJ] Man. of electrical equipment	245	100.5	9.1	-6.0	-0.8
[CK] Man. of machinery and equipment n.e.c.	402	106.2	-0.4	-0.4	-1.7
(C4): Man. of transport equipment	1265	122.8	5.0	-0.9	-4.2
of which Exports	617	127.5	5.1	-0.7	-16.8
[CL1] Man. of motor vehicles, trailers and semi-trailers	702	105.5	6.4	-1.9	1.3
[CL2] Man. of other transport equipment	562	144.5	3.8	0.0	-8.7
(C5): Other manufacturing	3881	104.3	2.6	-1.0	-0.8
of which Exports	1237	107.1	2.7	-1.3	-0.3
[CB] Man. of textiles, wearing apparel, leather and related products	188	110.0	0.7	0.0	0.2
[CC] Man. of wood and paper products; printing and reproduction of recorded media	436	96.4	1.1	-0.7	-0.4
[CE] Man. of chemicals and chemical products	745	101.3	4.4	3.0	-1.2
[CF] Man. of basic pharmaceutical products and pharmaceutical preparations	304	114.6	8.0	-6.6	1.6
[CG] Man. of rubber and plastics products, and other non-metallic mineral products	629	102.4	0.5	0.1	-0.2
[CH] Man. of basic metals and fabricated metal products, except machinery and equipment	926	98.8	1.1	-1.1	-1.4
[CM] Other manufacturing; repair and installation of machinery and equipment	653	116.1	3.4	-3.3	-1.9
DE: Mining and quarrying; energy, water supply, sewerage, waste management	1654	117.7	2.8	1.7	0.8
[BZ] Mining and quarrying	70	90.7	0.0	2.1	0.7
[DZ] Electricity, gas, steam and air-conditioning supply	1205	119.8	1.9	1.6	1.2
[EZ] Water supply, sewerage, waste management and remediation	379	116.1	6.3	1.9	-0.5
FZ: CONSTRUCTION	10000	102.3	2.7	-1.7	-1.6

* 10000=B...E and F

(1) Quarter-on-quarter: last three months / previous three months

Source: INSEE

Revisions of variations

(in point %)

	July/ June	June/ May	May/ Apr.	Q2 2016/ Q1 2016	2015/ 2014
Industry (BE)	-0.15	0.06	0.01	0.27	-0.01
raw serie	-0.19	-0.04	-0.04	0.07	0.00
SA-WDA coeff.	0.04	0.10	0.05	0.20	-0.01
Manufacturing industry (CZ)	-0.05	0.11	-0.01	0.33	-0.01
raw serie	0.12	-0.04	-0.06	0.08	0.00
SA-WDA coeff.	-0.17	0.15	0.05	0.25	-0.01

How to read it: in the manufacturing industry, the SA-WDA variation between June and July 2016 is revised by -0.05 points: +0.12 points are due to the revision of the raw series and -0.17 points to the new calculation of the SA-WDA parameters.

Source: INSEE

For further information:

- Complementary data (long series) and metadata (methodology, linked internet pages, etc.) are available on the web page of this index: <http://www.insee.fr/en/themes/info-rapide.asp?id=53>
- Historical data are available on the BDM: [G1781](#), [G1782](#), [G1783](#), [G1784](#), [G1785](#), [G1786](#) and [G1787](#)
- Press contact: bureau-de-presse@insee.fr
- Follow us on Twitter @InseeFr_News: https://twitter.com/InseeFr_News

Next issue: 30 November 2016 at 12.00