

Informations Rapides

9 janvier 2015 - n° 2

Principaux indicateurs



■ Industrial Production Indices – November 2014

In November 2014, manufacturing output decreased (–0.6%)

In November 2014, **manufacturing output** decreased (–0.6%, after –0.1% in October). Output declined more moderately in **industrial production as a whole** (–0.3% after –0.7% in October).

Manufacturing remained stable over the last three months

During the last three months (q-o-q), output remained stable in the manufacturing sector, while it declined in industry as a whole (–0.5%).

Output decreased in *mining, quarrying, energy and water supply* (–2.6%) and in the *manufacture of transport equipment* (–2.8%). Conversely, output went up sharply in the *manufacture of coke and refined petroleum products* (+9.0%), and to a lesser extent in the *manufacture of electrical and electronic equipment; machine equipment* (+0.5%). Output remained almost stable in *other manufacturing* (+0.1%) and held steady in the *manufacture of food products and beverages*.

Decrease over the year (–0.5%)

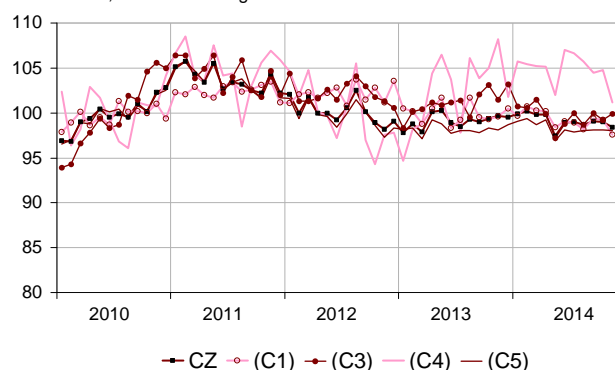
Manufacturing output of the last three months diminished compared to the same months of previous year (–0.5% y-o-y). Industrial output decreased more significantly (–1.2% y-o-y).

Output fell in *mining, quarrying, energy and water supply* (–4.3%), in the *manufacture of electrical and electronic equipment; machine equipment* (–2.5%), and in the *manufacture of transport equipment* (–2.1%). It decreased also in the *manufacture of food products and beverages* (–0.7%). On the contrary, output went up sharply in the *manufacture of coke and refined petroleum products* (+11.3%) and remained stable in *other manufacturing*.

Please note: all the series are seasonally (SA) and working-day adjusted (WDA).

Monthly Industrial Production Indices

2010 based, SA-WDA changes in %



Legend: CZ: Manufacturing - (C1): Manufacture of food products and beverages - (C3): Electrical and electronic equipment; machine equipment - (C4): Manufacture of transport equipment - (C5): Other manufacturing
Sources: INSEE, SSP, SOeS

Variation of the Industrial Production

2010 based, SA-WDA changes in %

	Nov. / Oct.	Oct. / Sept.	Q-o-Q change (1)	Year on year change (2)
NA : A10, (A17)				
BE: INDUSTRY	-0.3	-0.7	-0.5	-1.2
CZ: Manufacturing	-0.6	-0.1	0.0	-0.5
(C1): Manufacture of food products and beverages	-1.6	-0.2	0.0	-0.7
(C2): Manufacture of coke and refined petroleum products	-5.7	1.0	9.0	11.3
(C3): Electrical and electronic equipment; machine equipment	0.7	-0.8	0.5	-2.5
(C4): Manufacture of transport equipment	-3.4	0.3	-2.8	-2.1
(C5): Other manufacturing	-0.1	0.0	0.1	0.0
(DE): Mining and quarrying; energy; water supply; waste management	1.2	-3.4	-2.6	-4.3
FZ: CONSTRUCTION	1.1	0.5	-0.6	-1.1

(1) Last three months / previous three months

(2) Last three months / same three months of previous year

The codes correspond to the level of aggregation A 10 (A 17) of the "NA" aggregate classification based on NAF rev.2.

Sources: INSEE, SSP, SOeS

Variation of the Industrial Production

2010 based, SA-WDA changes in %

NA: A10, (A17), [A38 ou A64]	Nov. 2014	Nov. / Oct.	Oct. / Sept.	Quarter on quarter change
BE: INDUSTRY	97.4	-0.3	-0.7	-0.5
CZ: Manufacturing	98.4	-0.6	-0.1	0.0
(C1): Man. of food products and beverages	97.6	-1.6	-0.2	0.0
(C2): Man. of coke and refined petroleum products	83.8	-5.7	1.0	9.0
(C3): Electrical and electronic equipment; machine equipment	99.9	0.7	-0.8	0.5
[CI] Man. of computer, electronic and optical products	102.5	-0.5	-1.0	-0.5
[CJ] Man. of electrical equipment	93.3	3.3	0.7	0.7
[CK] Man. of machinery and equipment n.e.c. (1)	102.4	0.0	-1.5	1.0
(C4): Man. of transport equipment	101.2	-3.4	0.3	-2.8
[CL1] Man. of motor vehicles, trailers and semi-trailers	89.2	0.2	-2.1	-3.1
[CL2] Man. of other transport equipment	114.6	-6.5	2.4	-2.6
(C5): Other manufacturing	98.0	-0.1	0.0	0.1
[CB] Man. of textiles, wearing apparel, leather and related products	93.6	-4.0	-1.9	-1.2
[CC] Man. of wood and paper products; printing and reproduction of recorded media	86.7	0.2	-1.3	-2.5
[CE] Man. of chemicals and chemical products	109.5	-1.1	0.8	-1.0
[CF] Man. of basic pharmaceutical products and pharmaceutical preparations	101.1	1.2	1.8	4.5
[CG] Man. of rubber and plastics products, and other non-metallic mineral products	95.8	0.7	1.0	-0.4
[CH] Man. of basic metals and fabricated metal products, except machinery and equipment	95.5	0.4	0.3	-0.9
[CM] Other manufacturing; repair and installation of machinery and equipment	102.3	-0.8	-1.5	2.0
(DE): Mining and quarrying; energy; water supply; waste management	93.1	1.2	-3.4	-2.6
[BZ] Mining and quarrying	89.8	-0.4	-0.7	-1.9
[DZ] Electricity, gas, steam and air-conditioning supply	90.9	1.6	-4.1	-3.4
[EZ] Water supply; sewerage, waste management and remediation	110.0	-0.1	-0.3	2.2
FZ: CONSTRUCTION	95.3	1.1	0.5	-0.6
MIGs (2)				
Capital goods	100.5	-1.3	-0.8	-0.5
Intermediate goods	96.3	0.7	0.0	-0.8
Consumer durables	98.8	1.0	-2.1	0.0
Consumer non-durables	99.8	-1.6	0.9	1.1
Energy	92.3	0.8	-3.2	-1.9

(1) n.e.c.: not elsewhere classifiable

(2) Main industrial groupings: definition in Commission regulation EC of June 14th 2007

Sources: INSEE, SSP, SOeS

In November 2014, output declined in the manufacture of transport equipment (-3.4%)...

Output diminished significantly in the manufacture of other transport equipment (-6.5%), specially in aeronautic and spacecraft manufacture, but increased slightly in the manufacture of motor vehicles, trailers and semi-trailers (+0.2%).

...in the manufacture of food products and beverages (-1.6%)...

Output decreased in the manufacture of food products and beverages (-1.6%), particularly for other food products and drinks.

...and in the manufacture of coke and refined petroleum products (-5.7%).

Output decreased sharply in the manufacture of coke and refined petroleum products (-5.7%), due to maintenance operations in a refinery.

Output remained almost stable in other manufacturing (-0.1%).

Output declined in other manufacturing; repair and installation of machinery and equipment (-0.8%), in the manufacture of textiles, wearing apparel, leather and related products (-4.0%) and in the manufacture of chemicals and chemical products (-1.1%). On the contrary, output increased in the manufacture of basic metals and fabricated metal products, except machinery and equipment (+0.4%) and in the manufacture of rubber and plastics products, and other non-metallic mineral products (+0.7%).

Output went up in the manufacture of electrical and electronic equipment; machine equipment (+0.7%)...

Output went up in the manufacture of electrical and electronic equipment; machine equipment (+0.7%). In particular, output rose in the manufacture of electrical equipment (+3.3%).

...and in mining and quarrying; energy; water supply; waste management (+1.2%).

Output improved in electricity, gas, steam and air-conditioning supply (+1.6%).

• Revisions in October

Revisions of changes


(in point %)

	Oct. / Sept.	Sept. / Aug.	Aug. / July	Q3 2014 / Q2 2014	2013 / 2012
Industry (BE)	0.10	0.00	0.00	0.03	-0.03
raw serie	-0.10	-0.20	0.10	0.03	-0.02
SA-WDA coefficient	0.20	0.20	-0.10	0.00	-0.01
Manufacturing (CZ)	0.10	0.10	-0.10	0.00	-0.03
raw serie	-0.09	0.00	0.00	-0.03	-0.02
SA-WDA coefficient	0.19	0.10	-0.10	0.03	-0.01

How to read it: in the manufacturing sector, the SA-WDA evolution between September 2014 and October 2014 is revised by 0.10 point: -0.09 is due to the raw data revision and 0.19 to the new calculation of the SA-WDA coefficients.

Sources: Insee, SSP, SOeS

Learn more:

- Complementary data (long series) and metadata (methodology, linked internet pages, etc.) are available on the web page of this index: <http://www.insee.fr/en/themes/info-rapide.asp?id=10>
- Historical data are available on the BDM: [G1397](#), [G1398](#), [G1400](#), [G1401](#), [G1411](#).
- Press contact: bureau-de-presse@insee.fr
-  Follow us on [Twitter @InseeFr_News](https://twitter.com/InseeFr_News): https://twitter.com/InseeFr_News