

## ■ Turnover in the wholesale trade and business services – July 2016

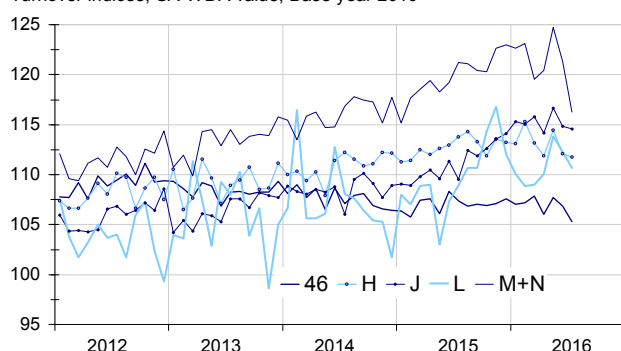
### In July 2016, the turnover fell again in business services and in wholesale trade

Every index in this issue is in value (tax excluded), seasonally and working day adjusted (SA-WDA). The commentary shows variations of subsections by decreasing contribution. The contribution of a subsection depends on the extent of the change and on its weight.

In July 2016, the turnover continued to decline in *business support activities* (–4.1%), in *wholesale trade, except of motor vehicles and motorcycles* (–1.4%), in *real estate activities* (–1.4%), in *transportation and storage* (–0.3%) and in *information and communication* (–0.2%).

#### Wholesale trade and business services

Turnover indices, SA-WDA value, Base year 2010



Source: INSEE

#### Further fall in wholesale trade, except of motor vehicles and motorcycles

In July 2016, the turnover of the *wholesale trade, except of motor vehicles and motorcycles* shrank (–1.4%) more significantly than in June (–0.8%). It fell back sharply for *wholesalers of household goods* (–2.7% after +0.4%) and for *wholesalers of other machinery, equipment and supplies* (–3.3% after +1.4%). It declined again nearly as in June for *other specialised wholesalers* (–1.5%) and at a much moderate pace for *wholesalers on a fee or contract basis* (–0.2% after –4.5% in June).

The turnover of the *wholesale trade, except of motor vehicles and motorcycles* sector decreased over the last three months (–0.4% q-o-q) and year-on-year (–0.6% y-o-y).

#### Significant deterioration again in business support activities

In July, the turnover of *business support activities* dropped even more sharply than in June (–4.1% after –2.7%). It shrank more strongly in *professional, scientific and technical activities* (–5.2% after –2.2%), particularly in *activities of head offices and management consultancy activities* (–6.5%) and *architectural and engineering activities* (–7.2%). On the contrary, it bounced back in the only sector of business support services on the rise in July: *advertising and market research* (+2.9% after –4.4%).

The turnover of *administrative and support service activities* also decreased again (–2.7% after –3.5%). It fell in all the subsectors, particularly in *office administrative, office support and other business support activities* (–4.8%) and in *employment activities* (–2.4%).

The turnover in *business support activities* decreased slightly over the last three months (–0.2% q-o-q) but rose over the year (+1.0% y-o-y).

#### Variation of the turnover in the wholesale trade and business services

SA-WDA value, Base year 2010

Nace classification	Weight	Change in %			
		July/June	June/May	q-o-q (1)	y-o-y (2)
<b>46 Wholesale trade, except of motor vehicles and motorcycles</b>	<b>1000</b>	<b>–1.4</b>	<b>–0.8</b>	<b>–0.4</b>	<b>–0.6</b>
<b>H Transportation and storage</b>	<b>1000</b>	<b>–0.3</b>	<b>–2.1</b>	<b>–0.6</b>	<b>–0.3</b>
<b>J Information and communication</b>	<b>1000</b>	<b>–0.2</b>	<b>–1.6</b>	<b>0.3</b>	<b>4.8</b>
<b>L Real estate activities</b>	<b>1000</b>	<b>–1.4</b>	<b>–1.4</b>	<b>2.7</b>	<b>5.5</b>
<b>M+N Business support activities</b>	<b>1000</b>	<b>–4.1</b>	<b>–2.7</b>	<b>–0.2</b>	<b>1.0</b>
M Professional, scientific and technical activities	579	–5.2	–2.2	–0.6	–0.1
N Administrative and support service activities	421	–2.7	–3.5	0.3	2.5

(1) Quarter-on-quarter: last three months / previous three months

(2) Year-on-year: last three months / same three months of previous year

The codes correspond to different levels of aggregation of the NACE classification.

Source: INSEE

## Slight decline in transportation and storage

In July, the turnover of *transportation and storage* continued went down but not as markedly as in June (–0.3% after –2.1%). It slipped back sharply in *water transport* (–3.9% after +4.3%) and in *postal and courier activities* (–3.5% after +0.1%). By contrast, the turnover bounced back in *warehousing and support activities for transportation* (+0.9% after –1.6%).

The turnover of *transportation and storage* shrank over the last three months (–0.6% q-o-q) and over the year (+0.3% y-o-y).

## Further fall in real estate activities

The turnover of *real estate activities* dipped again in July (–1.4% after –1.4% in June). It rose sharply over the last three months (+2.7% q-o-q) and over the year (+5.5% y-o-y).

## Slight decrease in information and communication

The turnover in *information and communication* slid slightly in July (–0.2%) after a marked downturn in June (–1.6%). It decreased markedly in *computer programming, consultancy and related activities* (–3.1%) and fell back slightly in *telecommunications* (–0.4%). By contrast, it bounced back in all other sectors related to *information and communication*: *motion picture, video and television programme production, sound recording and music publishing activities* (+3.9%), *programming and broadcasting activities* (+3.4%), *information service activities* (+3.4%) and *publishing activities* (+1.2%).

The turnover in *information and communication* increased slightly over the last three months (+0.3%) and sharply over the year (+4.8%).

## Revisions

The variation in the turnover for June 2016 has been lowered by 0.6 points in *business support activities*, by 0.3 points in *transportation and storage* and by 0.2 points in the *wholesale trade, except of motor vehicles and motorcycles*, in *information and communication* and in *real estate activities*. These revisions are due to the updating of the coefficients used for the seasonal and working-day adjustment (SA-WDA).

## Variation of the turnover in the wholesale trade and business services


SA-WDA value, Base year 2010

Nace Classification	Weight	July 2016	Change in %		
			July/ June	June/ May	q-o-q (1)
<b>46 Wholesale trade, except of motor vehicles and motorcycles</b>	<b>1000</b>	<b>105.3</b>	<b>–1.4</b>	<b>–0.8</b>	<b>–0.4</b>
461 Wholesale on a fee or contract basis	152	114.6	–0.2	–4.5	2.3
462 Wholesale of agricultural raw materials and live animals	54	103.7	–4.2	–0.5	–3.2
463 Wholesale of food, beverages and tobacco	170	111.6	0.4	–0.9	–0.4
464 Wholesale of household goods	207	103.2	–2.7	0.4	–0.6
465 Wholesale of information and communication equipment	61	105.0	–0.1	2.2	1.9
466 Wholesale of other machinery, equipment and supplies	125	108.3	–3.3	1.4	–4.8
467 Other specialised wholesale	197	89.9	–1.5	–1.4	1.1
469 Non specialised wholesale trade	34	130.7	–0.7	0.6	–0.3
<b>H Transportation and storage</b>	<b>1000</b>	<b>111.8</b>	<b>–0.3</b>	<b>–2.1</b>	<b>–0.6</b>
49 Land transport and transport via pipelines	407	112.8	–0.1	–4.7	–0.5
50 Water transport	73	124.5	–3.9	4.3	–1.1
51 Air transport	91	93.9	–1.3	3.0	–6.0
52 Warehousing and support activities for transportation	360	115.8	0.9	–1.6	0.3
53 Postal and courier activities	69	94.0	–3.5	0.1	0.7
<b>J Information and communication</b>	<b>1000</b>	<b>114.6</b>	<b>–0.2</b>	<b>–1.6</b>	<b>0.3</b>
58 Publishing activities	158	106.6	1.2	–2.8	0.3
59 Motion picture, video and television programme production...	76	106.8	3.9	–5.1	–2.8
60 Programming and broadcasting activities	61	113.9	3.4	–1.9	1.6
61 Telecommunications	396	108.7	–0.4	1.3	–0.2
62 Computer programming, consultancy and related activities	251	125.8	–3.1	–2.2	1.1
63 Information service activities	58	138.6	3.4	–7.6	2.3
<b>L Real estate activities</b>	<b>1000</b>	<b>110.6</b>	<b>–1.4</b>	<b>–1.4</b>	<b>2.7</b>
681 Buying and selling of own real estate	96	119.0	–0.6	–6.8	2.1
682 Renting and operating of own or leased real estate	691	109.8	–0.5	–1.6	3.8
683 Real estate activities on a fee or contract basis	213	110.1	–5.2	2.1	–1.3
<b>M+N Business support activities</b>	<b>1000</b>	<b>116.3</b>	<b>–4.1</b>	<b>–2.7</b>	<b>–0.2</b>
<b>M Professional, scientific and technical activities</b>	<b>579</b>	<b>112.4</b>	<b>–5.2</b>	<b>–2.2</b>	<b>–0.6</b>
69 Legal and accounting activities	90	116.0	–0.8	–1.8	–1.0
70 Activities of head offices...	219	112.5	–6.5	–2.4	–0.4
71 Architectural and engineering activities...	151	108.1	–7.2	–2.6	–2.0
72 Scientific research and development	26	112.0	–9.5	9.5	6.7
73 Advertising and market research	68	107.2	2.9	–4.4	0.3
74 Other professional, scientific and technical activities	19	140.3	–11.7	–4.6	–1.0
75 Veterinary activities	6	124.1	–3.0	0.1	–1.4
<b>N Administrative and support service activities</b>	<b>421</b>	<b>121.7</b>	<b>–2.7</b>	<b>–3.5</b>	<b>0.3</b>
77 Rental and leasing activities	98	117.2	–1.1	–3.9	2.5
78 Employment activities	80	127.9	–2.4	–4.5	0.2
79 Travel agency, tour operator...	42	116.8	–0.9	–1.2	–0.8
80 Security and investigation activities	21	127.0	–1.1	–2.5	–1.0
81 Services to buildings and landscape activities	50	114.9	–3.2	–3.0	–1.6
82 Office administrative, office support and other business support activities	131	125.8	–4.8	–3.4	–0.5

(1) Quarter-on-quarter: last three months / previous three months.

Source: INSEE

## For further information :

- Complementary data (long series) and metadata (methodology, linked internet pages, etc.) are available on the web page of the index: <http://www.insee.fr/en/themes/info-rapide.asp?id=95>
- Historical data are available on BDM: [G1795](#), [G1797](#), [G1798](#), [G1800](#), [G1801](#).
- Press contact: [bureau-de-presse@insee.fr](mailto:bureau-de-presse@insee.fr)
-  Follow us on Twitter @InseeFr\_News: [https://twitter.com/InseeFr\\_News](https://twitter.com/InseeFr_News)

Next issue: 28 October 2016 at 12:00