

Informations Rapides

30 septembre 2016 - n° 260



■ Turnover in industry and construction – July 2016

In July 2016, the turnover fell again in the manufacturing industry (–0.7%)

Every index in this issue is in value (tax excluded), seasonally and working day adjusted. The commentary shows variations of subsections by decreasing contribution. The contribution of a subsection depends on the extent of the change and on its weight.

In June 2016, the turnover fell again in the **manufacturing industry** (–0.7%) but it was more moderately than in June (–4.4%). The exports declined slightly (–0.3%) after a fall in June as a backlash after the major ship delivery occurred in May.

In the **industry as a whole**, the turnover weakened only a little (–0.2 %) thanks to the rebound in the *mining and quarrying, water supply, waste management sector* (+2.3 %, after –1.4 %).

Rise over the last three months (+0.8%)

Over the last three months, the turnover advanced in the *manufacturing industry* (+0.8%) and in the *industry as a whole* (+0.7 %). This rise was only due to the *manufacture of transport equipment* (+9.8%). Over this period, the turnover fell in all the other sectors: “*other manufacturing*” (–1.3%), the *manufacture of machinery and equipment goods* (–0.9%), the *manufacture of coke and refined petroleum products* (–1.7%) and the *manufacture of food products and beverages* (–0.2%).

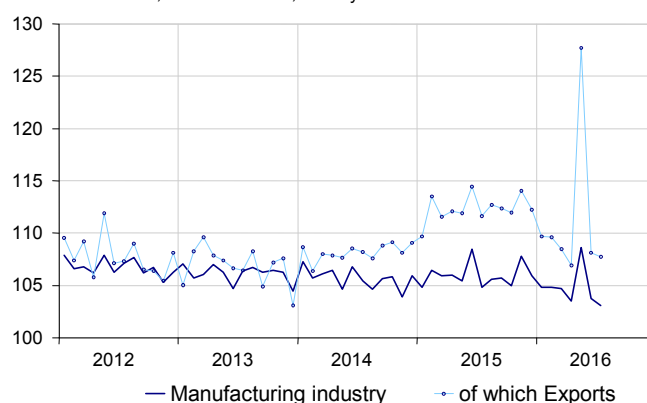
Decline compared to the previous year (–1.0%)

In the *manufacturing industry*, the turnover declined over the last three months, compared to the same three months of the previous year (–1.0%). It also shrank in the *industry as a whole* (–1.2%).

Over this period, the turnover tumbled in the *manufacture of coke and refined petroleum products* (–21.3%). It declined in “*other manufacturing*” (–1.6%), the *manufacture of machinery and equipment goods* (–2.8%) and the *manufacture of food products and beverages* (–0.8%). However, it surged in the *manufacture of transport equipment* (+7.5%)

Turnover in manufacturing industry

Turnover indexes, SA-WDA value, Base year 2010



Source: INSEE

Variation of the turnover in industry and construction

SA-WDA value, Base year 2010

NA : A 10, (A 17)	Weight**	Change in %			
		July/ June	June/ May	q-o-q (1)	y-o-y (2)
BE: INDUSTRY	10000	–0.2	–3.9	0.7	–1.2
CZ: MANUFACTURING INDUSTRY	8346	–0.7	–4.4	0.8	–1.0
Of which Exports	2677	–0.3	–15.3	5.7	1.6
(C1): Manufacture of food products and beverages	1685	–0.5	–0.4	–0.2	–0.8
(C2): Manufacture of coke and refined petroleum products	561	–0.1	–0.6	–1.7	–21.3
(C3): Machinery and equipment goods	953	–0.9	–1.2	–0.9	–2.8
(C4): Manufacture of transport equipment	1265	–0.1	–18.9	9.8	7.5
(C5): Other manufacturing	3881	–1.0	–0.9	–1.3	–1.6
DE: Mining and quarrying; energy; water supply; waste management	1654	2.3	–1.4	0.4	–1.9
FZ: CONSTRUCTION	10000	–3.6	–2.9	–2.0	–1.1

** 10000=B...E and F

(1) Quarter-on-quarter: last three months / previous three months

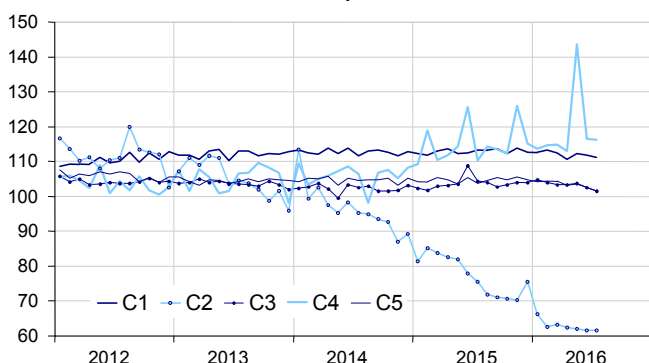
(2) Year-on-year : last three months / same three months of previous year

The codes correspond to different levels of aggregation of the NACE classification.

Source: INSEE

Turnover in manufacturing industry by sector

Turnover indexes, SA-WDA value, Base year 2010



Source: INSEE

New decline in "other manufacturing" (−1.0%)

The turnover in "other manufacturing" shrank again in July (−1.0%, after −0.9% in June). It decreased mainly in the *manufacture of basic metals and fabricated metal products* (−1.6%) and the *manufacture of basic pharmaceutical products and pharmaceutical preparations* (−3.9%). Conversely, it recovered in the *manufacture of chemicals and chemical products* (+1.4%, after −1.8%), the only sector in "other manufacturing" whose turnover advanced in July.

Further fall in food products and beverages (−0.5%)

In July, the turnover decreased slightly again in the *manufacture of food products and beverages* (−0.5% after −0.4% in June).

New decrease in machinery and equipment goods (−0.9%)

The turnover in the *manufacture of machinery and equipment goods* dropped again in July (−0.9%, after −1.2%). It fell in the *manufacture of electrical equipment*, (−2.9%) and the *manufacture of computer, electronic and optical products* (−1.0%). Conversely, it picked up in the *manufacture of machinery and equipment n.e.c.* (+0.2%, after −1.5%).

Near stability in transport equipment (−0.1%)

The turnover in the *manufacture of transport equipment* was virtually stable in July (−0.1%) after two exceptional months: a huge increase in May (+27.0%) due to a major ship delivery, followed by a backlash in June (−18.9%). It fell again in the *manufacture of motor vehicles* (−0.6%, after −1.8%) while it rebounded slightly in the *manufacture of other transport equipment* (+0.3%).

Virtual stability in coke and refined petroleum products (−0.1%)

In July, the turnover was practically stable in the *manufacture of coke and refined petroleum products* (−0.1%) after three consecutive months of decline (−0.8% on average per month over April, May and June).

• Revisions: +0.1 points in June in the manufacturing industry

In the *manufacturing industry*, the variation in the turnover in June 2016 has been revised upwards by 0.1 points, at −4.4% instead of −4.5% published previously. On the contrary, it has been lowered by 0.1 points in the *industry* as a whole.

Indexes of turnover in industry and construction

SA-WDA, based year 2010

Industries:	Weight*	July 2016	Change in %		
			July/ June	June/ May	q-o-q (1)
BE: INDUSTRY	10000	105.1	−0.2	−3.9	0.7
CZ: MANUFACTURING INDUSTRY	8346	103.1	−0.7	−4.4	0.8
<i>of which Exports</i>	2677	107.7	−0.3	−15.3	5.7
(C1): Man. of food products and beverages	1685	111.2	−0.5	−0.4	−0.2
<i>of which Exports</i>	285	114.1	−1.3	1.3	0.4
(C2): Man. of coke and refined petroleum products	561	61.6	−0.1	−0.6	−1.7
(C3): Machinery and equipment goods	953	101.5	−0.9	−1.2	−0.9
<i>of which Exports</i>	469	100.0	0.9	−1.6	−1.1
[CI] Man. of computer, electronic and optical products	306	100.7	−1.0	−1.9	1.1
[CJ] Man. of electrical equipment	245	94.7	−2.9	0.3	−0.9
[CK] Man. of machinery and equipment n.e.c.	402	106.4	0.2	−1.5	−2.3
(C4): Man. of transport equipment	1265	116.3	−0.1	−18.9	9.8
<i>of which Exports</i>	617	119.8	−1.1	−41.4	24.8
[CL1] Man. of motor vehicles, trailers and semi-trailers	702	99.2	−0.6	−1.8	1.0
[CL2] Man. of other transport equipment	562	137.6	0.3	−30.0	18.1
(C5): Other manufacturing	3881	101.6	−1.0	−0.9	−1.3
<i>of which Exports</i>	1237	104.6	−1.1	0.4	−1.4
[CB] Man. of textiles, wearing apparel, leather and related products	188	107.9	−0.5	−1.5	0.6
[CC] Man. of wood and paper products; printing and reproduction of recorded media	436	94.2	−1.6	−0.8	−1.1
[CE] Man. of chemicals and chemical products	745	96.5	1.4	−1.8	−2.7
[CF] Man. of basic pharmaceutical products and pharmaceutical preparations	304	108.9	−3.9	0.8	2.1
[CG] Man. of rubber and plastics products, and other non-metallic mineral products	629	100.7	−0.7	−1.1	−0.5
[CH] Man. of basic metals and fabricated metal products, except machinery and equipment	926	97.1	−1.6	−0.6	−2.6
[CM] Other manufacturing; repair and installation of machinery and equipment	653	114.3	−1.1	−1.0	−1.3
DE: Mining and quarrying; energy, water supply, sewerage, waste management	1654	115.2	2.3	−1.4	0.4
[BZ] Mining and quarrying	70	88.8	1.1	1.3	−2.5
[DZ] Electricity, gas, steam and air-conditioning supply	1205	119.0	3.0	−0.2	0.7
[EZ] Water supply; sewerage, waste management and remediation	379	107.8	0.2	−5.8	−0.2
FZ: CONSTRUCTION	10000	97.2	−3.6	−2.9	−2.0

** 10000=B...E and F

(1) Quarter-on-quarter: last three months / previous three months

Source: INSEE

Revisions of variations

(in point %)

	June/ May	May/ Apr.	Apr./ Mar.	Q4 2014/ Q3 2014	2014/ 2013
Industry (BE)	−0.15	−0.02	−0.06	−0.10	0.00
raw serie	−0.25	−0.07	0.03	−0.11	0.00
SA-WDA coeff.	0.10	0.05	−0.09	0.01	0.00
Manufacturing industry (CZ)	0.02	−0.03	−0.09	−0.09	0.00
raw serie	0.11	−0.09	0.04	0.02	0.00
SA-WDA coeff.	−0.09	0.05	−0.13	−0.11	0.00

How to read it: in the manufacturing industry, the SA-WDA evolution between May and June 2016 is revised by +0.02 points. Previously set at −4.46% (rounded to −4.5%, it has been revised at −4.44% (rounded to −4.4%))

Source : INSEE

For further information:

- Complementary data (long series) and metadata (methodology, linked internet pages, etc.) are available on the web page of this index: <http://www.insee.fr/en/themes/info-rapide.asp?id=53>
- Historical data are available on the BDM: [G1781](#), [G1782](#), [G1783](#), [G1784](#), [G1785](#), [G1786](#) and [G1787](#)
- Press contact: bureau-de-presse@insee.fr
- Follow us on Twitter @InseeFr_News: https://twitter.com/InseeFr_News

Next issue: 28 October 2016 at 12.00