

Informations *Rapides*

29 juillet 2016 - n° 205



■ Turnover in the wholesale trade and business services – May 2016

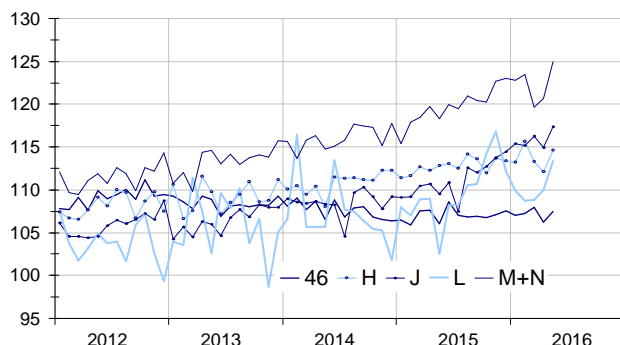
In May 2016, the turnover recovered in wholesale trade and increased again in business services

Every index in this issue is in value (tax excluded), seasonally and working day adjusted (SA-WDA). The commentary shows variations of subsections by decreasing contribution. The contribution of a subsection depends on the extent of the change and on its weight.

In May 2016, the turnover recovered in *wholesale trade, except for motor vehicles and motorcycles* (+1.2% after –1.6%), in *transportation and storage* (+2.2% after –1.1%) and in *information and communication* (+2.1% after –1.2%). It increased again, with a more dynamic growth rate, in *business support activities* (+3.5%) and in *real estate activities* (+3.1%).

Wholesale trade and business services

Turnover indices, SA-WDA value, Base year 2010



Source : INSEE

Rebound in wholesale trade, except of motor vehicles and motorcycles

In Mai 2016, the turnover of the *wholesale trade, except of motor vehicles and motorcycles* rose (+1.2%) after a decline in April (–1.6%). It recovered sharply for wholesalers on a fee or contract basis (+6.0% after –2.6%) further to the business resumption of central purchasing bodies after the social movements and, to a lesser extent, for *wholesalers of food, beverages and tobacco* (+2.2% after –2.2%) and *other specialised wholesale* (+2.2% after –0.4%). By contrast, it decreased sharply for wholesalers of *other machinery, equipment and supplies* (–7.0% after +1.0%).

The turnover of the *wholesale trade, except of motor vehicles and motorcycles* sector was virtually stable over the last three months (–0.1%, T/T–1) and year on year (+0.1%, T/T–4).

Recovery in transportation and storage

In May, the turnover of *transportation and storage* recovered sharply (+2.2%) after two months of decline (–1.1% in April and –2.0% in March). This rebound was directed principally by *land transport* which resumed its growth sharply (+5.7%) after two months of sluggish activity (–2.7% in April and –2.3% in March) and to a lesser extent in *warehousing and support activities for transportation* (+1.5%). By contrast, it fell back strongly in *air transport* (–9.7% after +0.9%).

The turnover of *transportation and storage* declined over the last three months (–0.6%) but increased over the year (+0.7%).

Variation of the turnover in the wholesale trade and business services

SA-WDA value, Base year 2010

Nace classification	Weight	Change in %			
		May/ April	April/ March	q-o-q (1)	y-o-y (2)
46 Wholesale trade, except of motor vehicles and motorcycles	1000	1.2	–1.6	–0.1	0.1
H Transportation and storage	1000	2.2	–1.1	–0.6	0.7
J Information and communication	1000	2.1	–1.2	1.0	5.4
L Real estate activities	1000	3.1	1.1	0.4	3.7
M+N Business support activities	1000	3.5	0.9	–1.1	2.5
M Professional, scientific and technical activities	579	2.4	3.2	–2.2	2.0
N Administrative and support service activities	421	5.0	–2.1	0.4	3.1

(1) Quarter-on-quarter: last three months / previous three months

(2) Year-on-year: last three months / same three months of previous year

The codes correspond to different levels of aggregation of the NACE classification.

Source: INSEE

Acceleration in real estate activities

The turnover of *real estate activities* ramped up in May (+3.1% after +1.1% in April). It increased slightly over the last three months (+0.4%, T/T-1) but sharply over the year (+3.7%, T/T-4).

Rebound in information and communication

The turnover in *information and communication* picked up in May (+2.1% after -1.2% in April). In particular, it advanced in *computer programming, consultancy and related activities* (+4.2%), in *information service activities* (+8.6%) and in *publishing activities* (+1.9%).

The turnover increased over the last three months (+1.0%) and strongly over the year (+5.4%).

Significant acceleration in business support activities

In May, the turnover of *business support activities* picked up sharply (+3.5% after +0.9% in April). It soared in *administrative and support service activities* (+5.0% after -2.1%), buoyed in particular by *employment activities* (+6.9%), by *office administrative, office support and other business support activities* (+4.6%), and by *rental and leasing activities* (+5.2%). The turnover in *professional, scientific and technical activities* rose also (+2.4%): it grew particularly in *architectural and engineering activities* (+4.0%), in *advertising and market research* (+5.1%), in *activities of head offices and management consultancy activities* (+1.0%) and in *legal and accounting activities* (+2.1%).

The turnover in *business support activities* dropped over the last three months (-1.1%, T/T-1) while it rose over the year (+2.5%, T/T-4).

• Revisions

The variation of turnover for April 2016 has been lowered by 0.3 points in *the wholesale trade, except of motor vehicles and motorcycles* and by 0.2 points in *transportation and storage* and in *information and communication*. It has been revised upwards by 0.3 points in *real estate activities*. It remained unchanged in *business support activities*. These revisions are due to of raw data and to the updating of the coefficients allowing the correction of seasonal variations and of working days (SA-WDA).

Variation of the turnover in the wholesale trade and business services


SA-WDA value, Base year 2010

Nace Classification	Weight	May 2016	Change in %		
			May/ April	April/ March	q-o-q (1)
46 Wholesale trade, except of motor vehicles and motorcycles	1000	107.5	1.2	-1.6	-0.1
461 Wholesale on a fee or contract basis	152	119.1	6.0	-2.6	-0.2
462 Wholesale of agricultural raw materials and live animals	54	109.7	0.8	-2.7	-1.7
463 Wholesale of food, beverages and tobacco	170	112.7	2.2	-2.2	-0.6
464 Wholesale of household goods	207	106.0	1.4	-2.2	-0.5
465 Wholesale of information and communication equipment	61	102.1	-0.2	-0.6	0.6
466 Wholesale of other machinery, equipment and supplies	125	109.2	-7.0	1.0	1.3
467 Other specialised wholesale	197	92.1	2.2	-0.4	-0.2
469 Non specialised wholesale trade	34	131.4	1.8	-4.6	2.4
H Transportation and storage	1000	114.6	2.2	-1.1	-0.6
49 Land transport and transport via pipelines	407	119.0	5.7	-2.7	-0.3
50 Water transport	73	126.4	-1.3	-1.0	-2.1
51 Air transport	91	91.2	-9.7	0.9	-1.9
52 Warehousing and support activities for transportation	360	116.4	1.5	0.5	-0.5
53 Postal and courier activities	69	96.7	3.4	-2.8	-0.4
J Information and communication	1000	117.3	2.1	-1.2	1.0
58 Publishing activities	158	111.3	1.9	0.7	4.4
59 Motion picture, video and television programme production...	76	109.1	1.0	-3.0	0.3
60 Programming and broadcasting activities	61	112.6	1.3	-0.4	1.4
61 Telecommunications	396	108.6	-0.2	-0.2	-0.2
62 Computer programming, consultancy and related activities	251	131.8	4.2	-3.0	0.6
63 Information service activities	58	146.0	8.6	-1.4	2.9
L Real estate activities	1000	113.4	3.1	1.1	0.4
681 Buying and selling of own real estate	96	125.2	4.9	0.2	3.0
682 Renting and operating of own or leased real estate	691	111.9	3.6	1.7	-0.2
683 Real estate activities on a fee or contract basis	213	114.1	0.2	-0.6	1.5
M+N Business support activities	1000	124.9	3.5	0.9	-1.1
M Professional, scientific and technical activities	579	121.8	2.4	3.2	-2.2
69 Legal and accounting activities	90	119.8	2.1	-1.6	0.8
70 Activities of head offices...	219	123.7	1.0	9.3	-4.8
71 Architectural and engineering activities...	151	119.6	4.0	-1.6	-2.1
72 Scientific research and development	26	111.5	1.5	0.6	1.3
73 Advertising and market research	68	110.5	5.1	-0.4	-1.1
74 Other professional, scientific and technical activities	19	170.0	4.8	2.6	6.5
75 Veterinary activities	6	128.2	0.1	-0.3	0.5
N Administrative and support service activities	421	129.4	5.0	-2.1	0.4
77 Rental and leasing activities	98	122.1	5.2	0.1	0.0
78 Employment activities	80	137.9	6.9	-4.0	2.8
79 Travel agency, tour operator...	42	119.8	4.7	-4.7	-1.8
80 Security and investigation activities	21	132.1	4.6	-3.4	0.0
81 Services to buildings and landscape activities	50	121.9	2.7	-0.9	-1.4
82 Office administrative, office support and other business support activities	131	136.9	4.6	-2.4	0.7

(1) Quarter-on-quarter: last three months / previous three months.

Source: INSEE

For further information :

- Complementary data (long series) and metadata (methodology, linked internet pages, etc.) are available on the web page of the index: <http://www.insee.fr/en/themes/info-rapide.asp?id=95>
- Historical data are available on BDM: [G1795](#), [G1797](#), [G1798](#), [G1800](#), [G1801](#).
- Press contact: bureau-de-presse@insee.fr
-  Follow us on Twitter @InseeFr_News: https://twitter.com/InseeFr_News

Next issue: 31 August 2016