

Informations *Rapides*

23 décembre 2014 - n° 302



■ Turnover in the wholesale trade and business services - October 2014

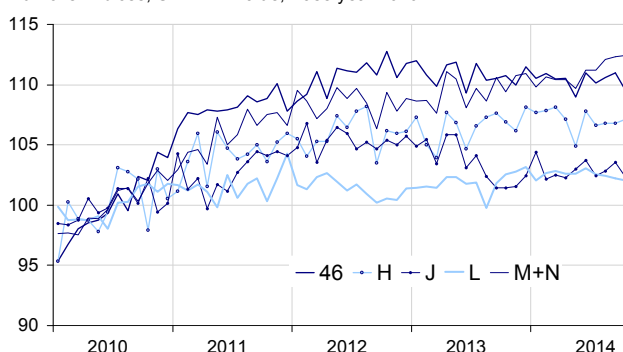
In October 2014, the turnover decreased in the wholesale trade and in information and communication

Every index in this issue is in value (tax excluded), seasonally and working day adjusted (SA-WDA). The commentary shows variations of subsections by decreasing contribution. The contribution of a subsection depends on the extent of the change and on its weight.

In October 2014, the turnover decreased in the *wholesale trade, except for motor vehicles and motorcycles* (−1.3%) and in *information and communication* (−1.2%). It shrank very slightly in *real estate activities* (−0.2%). Conversely it increased slightly in *transportation and storage* (+0.3%) and held almost steady in *business support activities* (+0.1%).

Wholesale trade and business services

Turnover indices, SA-WDA value, Base year 2010



Source: INSEE

Decrease in the wholesale trade, except for motor vehicles and motorcycles

In October, the turnover of the *wholesale trade, except for motor vehicles and motorcycles* decreased (−1.3%) after a slight increase in September (+0.3%). It declined in *other specialised wholesale* (−2.9%), in the *wholesale on a fee or contract basis* (−1.5%), in the *wholesale of information and communication equipment* (−3.8%), in the *wholesale of food, beverages and tobacco* (−1.2%) and in the *wholesale of other machinery, equipment and supplies* (−0.4%).

The turnover of the *wholesale trade, except for motor vehicles and motorcycles* went up over the last three months (+0.3%) and decreased slightly over the year (−0.2%).

Slight increase in transportation and storage

In October, the turnover of *transportation and storage* improved slightly (+0.3%) after a stability in September (0.0%). It bounced back very strongly in *air transport* (+9.2%) after the social movements of September (−22.1%). It increased also in *warehousing and support activities for transportation* (+0.5%) and in *water transport* (+1.1%). On the contrary it diminished in *land transport and transport via pipelines* (−1.4%) and in *postal and courier activities* (−0.7%).

The turnover of *transportation and storage* increased over the last three months (+0.4%) but decreased over the year (−0.3%).

Slight decline in real estate activities

The turnover of *real estate activities* declined slightly in October (−0.2% as in September). It declined over the last three months (−0.5%) but improved over the year (+0.9%).

Variation of the turnover in the wholesale trade and business services

SA-WDA value, Base year 2010

Nace classification	Weight	Change in %			
		Oct./ Sept.	Sept./ Aug.	q-o-q (1)	y-o-y (2)
46 Wholesale trade, except for motor vehicles and motorcycles	1000	−1.3	0.3	0.3	−0.2
H Transportation and storage	1000	0.3	0.0	0.4	−0.3
J Information and communication	1000	−1.2	0.7	−0.1	1.1
L Real estate activities	1000	−0.2	−0.2	−0.5	0.9
M+N Business support activities	1000	0.1	0.2	1.4	2.5
M Professional, scientific and technical activities	579	0.3	0.6	1.5	2.6
N Administrative and support service activities	421	−0.2	−0.4	1.3	2.4

(1) Quarter-on-quarter: last three months / previous three months

(2) Year-on-year: last three months / same three months of previous year

The codes correspond to different levels of aggregation of the NACE classification.

Source: INSEE

Decline in information and communication

In October, the turnover of *information and communication* diminished (–1.2%) after a two-month-in-a-row growth. It declined in *telecommunications* (–3.0%), in *information service activities* (–2.3%) and in *programming and broadcasting activities* (–1.4%). On the contrary, it went up in *publishing activities* (+0.3%). It held steady in *motion picture, video and television programme production* (0.0%) and held almost steady in *computer programming, consultancy and related activities* (+0.1%).

The turnover of *information and communication* levelled off over the last three months (–0.1%) and grew over the year (+1.1%).

Near stability in business support activities

The turnover of *business support activities* held almost steady in October (+0.1%) after a very light increase in September (+0.2%). It went up slightly in *professional, scientific and technical activities* (+0.3%): it increased in *advertising and market research* (+2.1%) and in *architectural and engineering activities* (+0.7%), while it diminished in *activities of head offices* (–0.3%). The turnover declined slightly in *administrative and support service activities* (–0.2%): it declined in *travel agency, tour operator* (–2.1%), in *rental and leasing activities* (–0.6%) and in *security and investigation activities* (–1.6%) but improved in *office administrative, office support and other business support activities* (+1.0%).

The turnover in *business support activities* improved over the last three months (+1.4%) and more significantly over the year (+2.5%).

Revisions

The change in September was revised by +0.3 point in *business support activities*. Initially calculated at –0.1%, it was revised at +0.2%. That same month, the change was revised by +0.2 point in *transportation and storage* and by +0.1 point in the *wholesale trade, except for motor vehicles and motorcycles* and in *information and communication*. It remained unchanged in *real estate activities*.

Variation of the turnover in the wholesale trade and business services


SA-WDA value, Base year 2010

Nace Classification	Weight	Oct. 2014	Change in %		
			Oct./ Sept.	Sept./ Aug.	q-o-q (1)
46 Wholesale trade, except for motor vehicles and motorcycles	1000	109.5	–1.3	0.3	0.3
461 Wholesale on a fee or contract basis	152	117.3	–1.5	1.2	–0.1
462 Wholesale of agricultural raw materials and live animals	54	115.3	–0.6	–0.2	–1.3
463 Wholesale of food, beverages and tobacco	170	111.6	–1.2	1.2	0.0
464 Wholesale of household goods	207	107.1	0.2	–0.6	0.9
465 Wholesale of information and communication equipment	61	97.2	–3.8	–0.5	–0.8
466 Wholesale of other machinery, equipment and supplies	125	112.6	–0.4	–0.2	1.5
467 Other specialised wholesale	197	104.4	–2.9	1.0	0.3
469 Non specialised wholesale trade	34	110.0	–1.5	–2.2	0.3
H Transportation and storage	1000	107.1	0.3	0.0	0.4
49 Land transport and transport via pipelines	407	107.8	–1.4	1.8	0.8
50 Water transport	73	115.8	1.1	4.6	1.4
51 Air transport	91	92.0	9.2	–22.1	–8.9
52 Warehousing and support activities for transportation	360	110.1	0.5	2.3	2.1
53 Postal and courier activities	69	98.5	–0.7	2.0	0.5
J Information and communication	1000	102.3	–1.2	0.7	–0.1
58 Publishing activities	158	104.3	0.3	–2.1	1.2
59 Motion picture, video and television programme production...	76	104.3	0.0	0.5	2.0
60 Programming and broadcasting activities	61	106.1	–1.4	5.7	–2.9
61 Telecommunications	396	90.9	–3.0	0.7	–1.1
62 Computer programming, consultancy and related activities	251	115.8	0.1	1.2	0.4
63 Information service activities	58	109.6	–2.3	1.4	–0.1
L Real estate activities	1000	102.0	–0.2	–0.2	–0.5
681 Buying and selling of own real estate	96	82.6	5.8	–5.1	–4.5
682 Renting and operating of own or leased real estate	691	105.2	–0.4	–0.1	–0.1
683 Real estate activities on a fee or contract basis	213	100.4	–1.6	1.0	–0.3
M+N Business support activities	1000	112.4	0.1	0.2	1.4
M Professional, scientific and technical activities	579	112.9	0.3	0.6	1.5
69 Legal and accounting activities	90	107.1	0.3	–2.4	0.8
70 Activities of head offices...	219	120.3	–0.3	2.8	1.7
71 Architectural and engineering activities...	151	110.4	0.7	–0.7	1.3
72 Scientific research and development	26	105.3	–1.2	1.0	2.1
73 Advertising and market research	68	104.7	2.1	0.4	1.5
74 Other professional, scientific and technical activities	19	113.9	0.6	–0.9	2.1
75 Veterinary activities	6	116.3	–0.8	1.7	2.0
N Administrative and support service activities	421	111.8	–0.2	–0.4	1.3
77 Rental and leasing activities	98	109.7	–0.6	–0.4	0.7
78 Employment activities	80	110.3	–0.1	1.4	1.9
79 Travel agency, tour operator...	42	104.6	–2.1	–1.0	2.2
80 Security and investigation activities	21	115.6	–1.6	0.3	1.6
81 Services to buildings and landscape activities	50	111.5	–0.5	1.6	1.4
82 Office administrative, office support and other business support activities	131	116.2	1.0	–1.9	1.1

(1) Quarter-on-quarter: last three months / previous three months.

Source: INSEE

For further information :

- Complementary data (long series) and metadata (methodology, linked internet pages, etc.) are available on the web page of the index: <http://www.insee.fr/fr/themes/info-rapide.asp?id=95>
- Historical data are available on BDM: [G1418](#), [G1421](#), [G1423](#), [G1424](#), [G1426](#).
- Press contact: bureau-de-presse@insee.fr
-  Follow us on [Twitter@InseeFr_News](https://twitter.com/InseeFr_News) (lien : https://twitter.com/InseeFr_News)

Next publication : January 30th 2015