

# Informations Rapides

30 juin 2016 - n° 172



## ■ Turnover in industry and construction – April 2016

### In April 2016, the turnover declined in the manufacturing industry (-1.2%)

Every index in this issue is in value (tax excluded), seasonally and working day adjusted. The commentary shows variations of subsections by decreasing contribution. The contribution of a subsection depends on the extent of the change and on its weight.

In April 2016, the turnover declined in the **manufacturing industry** (-1.2%) after a virtual stability in March (-0.1%). Exports continued to decline, more substantially than in March (-1.6% after -0.6%).

In the **industry as a whole**, the turnover decreased more moderately than in the *manufacturing industry* in April (-0.7%), owing to a rebound in the *mining and quarrying; energy; water supply; waste management* sector (+1.7%, after -1.2% in March).

#### Fall over the last three months (-1.6%)

Over the last three months, the turnover dropped in the *manufacturing industry* (-1.6%) as well as in the *industry as a whole* (-1.1%).

Over this period, it plummeted in the *manufacture of coke and refined petroleum products* (-11.1%). It declined sharply in the *manufacture of transport equipment* (-3.4%), owing to the *manufacture of other transport equipment* (-5.9%). It fell more moderately in *other manufacturing* (-0.7%), in the *manufacture of food products and beverages* (-0.7%) and in the *capital goods industry* (-0.5%). Conversely, it recovered in the *mining and quarrying, energy, water supply, waste management* (+1.2% over three months, after -1.3% in March).

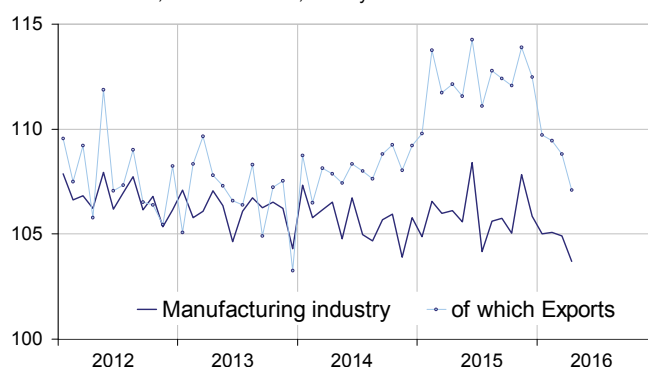
#### Decline compared to the previous year (-1.6%)

In the *manufacturing industry*, the turnover declined over the last three months, compared to the same months of 2015 (-1.6%, y-o-y). It dropped as well in the *industry as a whole* (-1.3%).

Over this period, the turnover plummeted in the *manufacture of coke and refined petroleum products* (-25.2%). It went down in *other manufacturing* (-0.7%) and more moderately in the *manufacture of food products and beverages* (-0.3%) and the *mining and quarrying, energy, water supply, waste management* sector (-0.4%). On the other hand, it went up in the *manufacture of transport equipment* (+0.5%) and in the *capital goods industry* (+0.6%).

#### Turnover in manufacturing industry

Turnover indexes, SA-WDA value, Base year 2010



Source: INSEE

#### Variation of the turnover in industry and construction

SA-WDA value, Base year 2010

NA : A 10, (A 17)	Weight**	Change in %			
		Apr./ Mar.	Mar./ Feb.	q-o-q (1)	y-o-y (2)
<b>BE: INDUSTRY</b>	<b>10000</b>	<b>-0.7</b>	<b>-0.3</b>	<b>-1.1</b>	<b>-1.3</b>
<b>CZ: MANUFACTURING INDUSTRY</b>	<b>8346</b>	<b>-1.2</b>	<b>-0.1</b>	<b>-1.6</b>	<b>-1.6</b>
<i>Of which Exports</i>	2677	-1.6	-0.6	-3.2	-3.6
(C1): Manufacture of food products and beverages	1685	-1.8	-0.7	-0.7	-0.3
(C2): Manufacture of coke and refined petroleum products	561	-1.5	-0.4	-11.1	-25.2
(C3): Capital goods industry	953	0.0	-0.5	-0.5	0.6
(C4): Manufacture of transport equipment	1265	-1.6	0.2	-3.4	0.5
(C5): Other manufacturing	3881	-0.9	0.1	-0.7	-0.7
<b>DE: Mining and quarrying; energy; water supply; waste management</b>	<b>1654</b>	<b>1.7</b>	<b>-1.2</b>	<b>1.2</b>	<b>-0.4</b>
<b>FZ: CONSTRUCTION</b>	<b>10000</b>	<b>-0.2</b>	<b>-1.7</b>	<b>-0.5</b>	<b>0.1</b>

\*\* 10000=B...E and F

(1) Quarter-on-quarter: last three months / previous three months

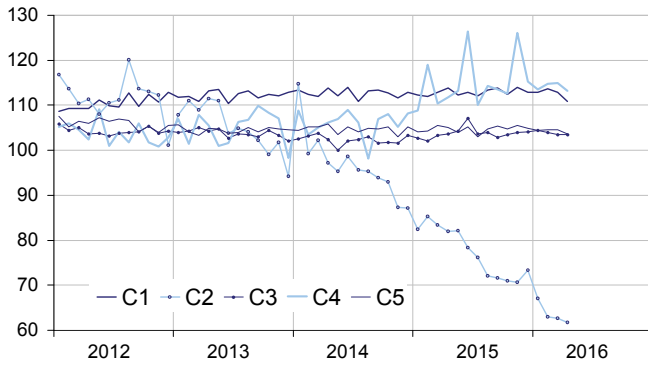
(2) Year-on-year: last three months / same three months of previous year

The codes correspond to different levels of aggregation of the NACE classification.

Source: INSEE

## Turnover in manufacturing industry by sector

Turnover indexes, SA-WDA value, Base year 2010



Source: INSEE

### Decline in “other manufacturing” (–0.9%)

The turnover in “other manufacturing” fell in April (–0.9%) after a virtual stability in March (+0.1%). Except for the *pharmaceutical products*, it went down in all sectors, mainly in the *manufacture of basic metals and fabricated metal products* (–3.3%) and, to a lesser extent, in the *manufacture of chemicals and chemical products* (–0.7%) and the *manufacture of wood and paper products and printing* (–0.6%). Conversely, it grew substantially in the *manufacture of basic pharmaceutical products and pharmaceutical preparations* (+1.3%).

### New decline in food products and beverages (–1.8%)

The turnover declined again in the *manufacture of food products and beverages* (–1.8% in April, after –0.7%).

### Decline in transport equipments (–1.6%)

The turnover in the *manufacture of transport equipment* shrunk in April (–1.6%, after +0.2% in March), owing to a dramatic fall in exports (–4.5%, after +1.7%). It dropped sharply in the *manufacture of other transport equipment* (–3.5%, after +1.2%) while it bounced back moderately in the *manufacture of motor vehicles*. (+0.4%, after –0.8%).

### New fall in coke and refined petroleum products (–1.5%)

In April, the turnover fell once again in the *manufacture of coke and refined petroleum products* (–1.5%), more considerably than in March (–0.4%).

### Stability in capital goods

The turnover in the *capital goods industry* levelled off in April after a fall for two months in a row (–0.5% in March and –0.4% in February). It rebounded in the *manufacture of machinery and equipment n.e.c.* (+1.1%) while it fell back in the *manufacture of computer, electronic and optical products* (–0.9%) and in the *manufacture of electrical equipment* (–1.0%).

### • Revisions: +0.1 points in March in the manufacturing industry

In the *manufacturing industry*, the variation of the turnover in March 2016 has been revised upwards, at –0.1% instead of –0.2% published previously. It has been revised downwards by –0.1 points in the *industry* as a whole.

## Indices of turnover in industry and construction

SA-WDA, based year 2010

Industries:	Weight*	Apr. 2016	Change in %		
			Apr./ Mar.	Mar./ Feb.	q-o-q (1)
<b>BE: INDUSTRY</b>	<b>10000</b>	<b>105.5</b>	<b>–0.7</b>	<b>–0.3</b>	<b>–1.1</b>
<b>CZ: MANUFACTURING INDUSTRY</b>	<b>8346</b>	<b>103.7</b>	<b>–1.2</b>	<b>–0.1</b>	<b>–1.6</b>
of which Exports	2677	107.1	–1.6	–0.6	–3.2
<b>(C1): Man. of food products and beverages</b>	<b>1685</b>	<b>110.9</b>	<b>–1.8</b>	<b>–0.7</b>	<b>–0.7</b>
of which Exports	285	113.0	–1.9	–2.4	–0.3
<b>(C2): Man. of coke and refined petroleum products</b>	<b>561</b>	<b>61.8</b>	<b>–1.5</b>	<b>–0.4</b>	<b>11.1</b>
<b>(C3): Capital goods industry</b>	<b>953</b>	<b>103.5</b>	<b>0.0</b>	<b>–0.5</b>	<b>–0.5</b>
of which Exports	469	100.6	–0.2	–1.4	–1.4
[C1] Man. of computer, electronic and optical products	306	100.7	–0.9	1.2	–0.4
[CJ] Man. of electrical equipment	245	97.1	–1.0	0.4	–0.7
[CK] Man. of machinery and equipment n.e.c.	402	109.4	1.1	–2.1	–0.5
<b>(C4): Man. of transport equipment</b>	<b>1265</b>	<b>113.1</b>	<b>–1.6</b>	<b>0.2</b>	<b>–3.4</b>
of which Exports	617	116.8	–4.5	1.7	–5.8
[CL1] Man. of motor vehicles, trailers and semi-trailers	702	99.2	0.4	–0.8	–0.4
[CL2] Man. of other transport equipment	562	130.5	–3.5	1.2	–5.9
<b>(C5): Other manufacturing</b>	<b>3881</b>	<b>103.6</b>	<b>–0.9</b>	<b>0.1</b>	<b>–0.7</b>
of which Exports	1237	105.9	–0.4	–1.0	–2.3
[CB] Man. of textiles, wearing apparel, leather and related products	188	108.3	–0.2	0.6	–1.0
[CC] Man. of wood and paper products; printing and reproduction of recorded media	436	96.2	–0.6	–0.9	–1.5
[CE] Man. of chemicals and chemical products	745	98.8	–0.7	–0.3	–1.9
[CF] Man. of basic pharmaceutical products and pharmaceutical preparations	304	109.7	1.3	–0.2	–0.5
[CG] Man. of rubber and plastics products, and other non-metallic mineral products	629	102.0	–0.1	–0.7	–0.9
[CH] Man. of basic metals and fabricated metal products, except machinery and equipment	926	99.9	–3.3	2.3	–0.4
[CM] Other manufacturing; repair and installation of machinery and equipment	653	116.8	–0.2	–0.9	0.8
<b>DE: Mining and quarrying; energy, water supply, sewerage, waste management</b>	<b>1654</b>	<b>114.3</b>	<b>1.7</b>	<b>–1.2</b>	<b>1.2</b>
[BZ] Mining and quarrying	70	90.6	0.0	–0.8	–3.7
[DZ] Electricity, gas, steam and air-conditioning supply	1205	117.5	2.8	–1.1	1.7
[EZ] Water supply; sewerage, waste management and remediation	379	108.4	–1.8	–1.5	0.2
<b>FZ: CONSTRUCTION</b>	<b>10000</b>	<b>102.5</b>	<b>–0.2</b>	<b>–1.7</b>	<b>–0.5</b>

\*\* 10000=B...E and F

(1) Quarter-on-quarter: last three months / previous three months

Source: INSEE

### Measure of variation revisions

(in percentage points)

	Mar./ Feb.	Feb./ Jan.	Jan./ Dec.	Q4 2014/ Q3 2014	2014/ 2013
<b>Industry (BE)</b>	<b>–0.10</b>	<b>–0.06</b>	<b>0.01</b>	<b>–0.12</b>	<b>–0.05</b>
raw serie	–0.45	–0.03	0.04	–0.12	–0.04
SA-WDA coeff.	0.35	–0.03	–0.03	0.00	–0.01
<b>Manufacturing industry (CZ)</b>	<b>0.02</b>	<b>–0.04</b>	<b>0.00</b>	<b>–0.11</b>	<b>–0.06</b>
raw serie	–0.07	–0.02	0.05	0.00	–0.05
SA-WDA coeff.	0.10	–0.02	–0.05	–0.11	–0.01

How to read it: in the manufacturing, the SA-WDA variation between February and March 2016 is revised by +0.02 points: –0.07 points are due to the revision of raw series and +0.10 points to the new calculation of the SA-WDA coefficients.

Source: INSEE

### For further information:

- Complementary data (long series) and metadata (methodology, linked internet pages, etc.) are available on the web page of this index: <http://www.insee.fr/en/themes/info-rapide.asp?id=53>
- Historical data are available on the BDM: [G1781](#), [G1782](#), [G1783](#), [G1784](#), [G1785](#), [G1786](#) and [G1787](#)
- Press contact: [bureau-de-presse@insee.fr](mailto:bureau-de-presse@insee.fr)
- Follow us on Twitter @InseeFr\_News: [https://twitter.com/InseeFr\\_News](https://twitter.com/InseeFr_News)

Next issue: 31 July 2016