

## ■ Turnover in the wholesale trade and business services - March 2016

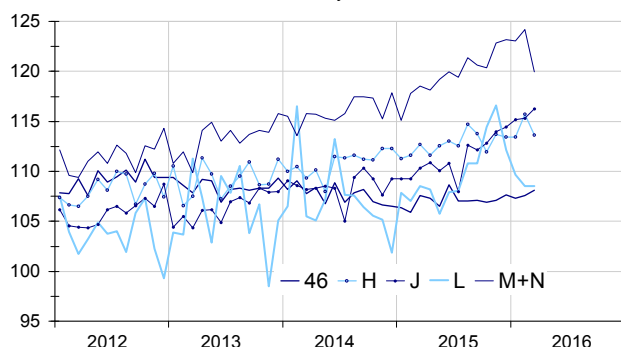
### In March 2016, the turnover improved in wholesale trade but dropped in business support activities and in transportation

Every index in this issue is in value (tax excluded), seasonally and working day adjusted (SA-WDA). The commentary shows variations of subsections by decreasing contribution. The contribution of a subsection depends on the extent of the change and on its weight.

In March 2016, the turnover increased in *wholesale trade, except for motor vehicles and motorcycles* (+0.5%), and in *information and communication* (+0.9%) while it was steady in *real estate activities*. By contrast, it fell back sharply in *business support activities* (-3.4%) and in *transportation and storage* (-1.8%).

#### Wholesale trade and business services

Turnover indices, SA-WDA value, Base year 2010



Source: INSEE

#### Further rise in wholesale trade, except of motor vehicles and motorcycles

In Mars 2016, the turnover of the *wholesale trade, except of motor vehicles and motorcycles* sector increased again (+0.5% after +0.3% in February). It recovered for wholesalers of *information and communication equipment* (+2.7%) and of *household goods* (+1.1%). Conversely it declined slightly in the wholesale of *other specialised wholesale* (-0.3%) and in the *wholesale of food, beverages and tobacco* (-0.8%),

The turnover of the *wholesale trade, except of motor vehicles and motorcycles* sector increased in Q1 2016

compared to Q4 2015 (+0.4%, T/T-1) and compared to Q1 2015 (+1.0%, T/T-4).

#### Stability in real estate activities

The turnover of *real estate activities* was unchanged in March after three months of decline (-2.4% on average). It dropped steeply over the first quarter (-4.8%, T/T-1) while it rose over the year (+1.0%, T/T-4).

#### Downturn in transportation and storage

In March, the turnover of *transportation and storage* fell back sharply (-1.8% après +2.0% in February). It declined particularly in *warehousing and support activities for transportation* (-2.6% après +1.9%) and in *land transport* (-1.9% après +2.4%). By contrast, it increased again in *postal and courier activities* (+0.9%, after +0.4%).

The turnover of *transportation and storage* increased over the first quarter (+1.1%) and over the year (+2.1%).

#### Variation of the turnover in wholesale trade and business services

SA-WDA value, Base year 2010

Nace classification	Weight	Change in %			
		March /Feb.	Feb./ Jan.	q-o-q (1)	y-o-y (2)
<b>46 Wholesale trade, except of motor vehicles and motorcycles</b>	<b>1000</b>	<b>0.5</b>	<b>0.3</b>	<b>0.4</b>	<b>1.0</b>
<b>H Transportation and storage</b>	<b>1000</b>	<b>-1.8</b>	<b>2.0</b>	<b>1.1</b>	<b>2.1</b>
<b>J Information and communication</b>	<b>1000</b>	<b>0.9</b>	<b>0.1</b>	<b>1.6</b>	<b>5.5</b>
<b>L Real estate activities</b>	<b>1000</b>	<b>0.0</b>	<b>-1.1</b>	<b>-4.8</b>	<b>1.0</b>
<b>M+N Business support activities</b>	<b>1000</b>	<b>-3.4</b>	<b>0.9</b>	<b>0.2</b>	<b>4.5</b>
M Professional, scientific and technical activities	579	-4.8	-0.6	-0.6	3.8
N Administrative and support service activities	421	-1.4	3.0	1.3	5.4

(1) Quarter-on-quarter: last three months / previous three months

(2) Year-on-year : last three months / same three months of previous year

The codes correspond to different levels of aggregation of the NACE classification.

Source: INSEE

## Variation of the turnover in wholesale trade and business services

SA-WDA value, Base year 2010

### Increase in information and communication

The turnover in *information and communication* went up in March (+0.9%) after a virtual stability in February (+0.1%). It bounced back strongly in publishing activities (+3.3%, after -0.9%); it rose sharply in *motion picture, video and television programme production* (+3.5%) and it recovered in *programming and broadcasting activities* (+1.4%, après -5.7%).

The turnover in *information and communication* increased substantially over the first quarter (+1.6%) and year-on-year (+5.5%).

### Sharp decline in business support activities

In March, the turnover of *business support activities* slipped back significantly (-3.4% after +0.9% in February). It dropped markedly in *professional, scientific and technical activities* (-4.8%), particularly in *activities of head offices; management consultancy activities* (-8.9%) and in *architectural and engineering activities* (-3.5%).

It shrank also in *administrative and support service activities* (-1.4%, after +3.0%). In particular the turnover went down in *rental and leasing activities* (-4.3% after +3.0% in February) and in *security and investigation activities* (-2.8% after +5.7% in February).

The turnover in *business support activities* went up slightly over the first quarter (+0.2%) and strongly over the year (+4.5%).

- **Revisions:**


The variation of turnover for February 2016 has been lowered by 1.2 points in *business support activities* (corrections of raw series) and by 0.1 points in *transportation and storage*. It has been revised upwards by 0.4 points in *real estate activities* (revision due to the new calculation of the SA-WDA). It remained unchanged in *the wholesale trade, except of motor vehicles and motorcycles* and in *information and communication*.

Nace Classification	Weight	March 2016	Change in %		
			March /Feb.	Feb./ Jan.	q-o-q (1)
<b>46 Wholesale trade, except of motor vehicles and motorcycles</b>	<b>1000</b>	<b>108.1</b>	<b>0.5</b>	<b>0.3</b>	<b>0.4</b>
461 Wholesale on a fee or contract basis	152	115.0	0.1	0.1	-1.6
462 Wholesale of agricultural raw materials and live animals	54	112.9	0.3	1.0	-0.7
463 Wholesale of food, beverages and tobacco	170	113.4	-0.8	1.6	1.2
464 Wholesale of household goods	207	107.3	1.1	-0.7	1.2
465 Wholesale of information and communication equipment	61	103.8	2.7	-0.8	0.6
466 Wholesale of other machinery, equipment and supplies	125	116.3	1.2	1.9	2.6
467 Other specialised wholesale	197	90.0	-0.3	-1.1	-1.1
469 Non specialised wholesale trade	34	135.6	3.8	1.3	2.5
<b>H Transportation and storage</b>	<b>1000</b>	<b>113.6</b>	<b>-1.8</b>	<b>2.0</b>	<b>1.1</b>
49 Land transport and transport via pipelines	407	116.3	-1.9	2.4	1.4
50 Water transport	73	131.9	-0.7	2.9	0.2
51 Air transport	91	100.6	-0.5	0.8	2.3
52 Warehousing and support activities for transportation	360	113.5	-2.6	1.9	0.9
53 Postal and courier activities	69	96.4	0.9	0.4	-0.1
<b>J Information and communication</b>	<b>1000</b>	<b>116.3</b>	<b>0.9</b>	<b>0.1</b>	<b>1.6</b>
58 Publishing activities	158	109.3	3.3	-0.9	1.9
59 Motion picture, video and television programme production...	76	114.7	3.5	2.6	0.3
60 Programming and broadcasting activities	61	110.0	1.4	-5.7	2.2
61 Telecommunications	396	109.1	0.2	0.0	1.1
62 Computer programming, consultancy and related activities	251	130.1	0.1	1.0	2.4
63 Information service activities	58	131.8	-0.2	1.4	1.5
<b>L Real estate activities</b>	<b>1000</b>	<b>108.5</b>	<b>0.0</b>	<b>-1.1</b>	<b>-4.8</b>
681 Buying and selling of own real estate	96	117.5	-1.4	5.2	-3.0
682 Renting and operating of own or leased real estate	691	105.8	0.1	-2.5	-6.6
683 Real estate activities on a fee or contract basis	213	115.4	0.1	1.5	1.3
<b>M+N Business support activities</b>	<b>1000</b>	<b>120.0</b>	<b>-3.4</b>	<b>0.9</b>	<b>0.2</b>
<b>M Professional, scientific and technical activities</b>	<b>579</b>	<b>115.6</b>	<b>-4.8</b>	<b>-0.6</b>	<b>-0.6</b>
69 Legal and accounting activities	90	120.0	0.0	3.0	1.6
70 Activities of head offices...	219	113.1	-8.9	-3.9	-1.1
71 Architectural and engineering activities...	151	116.6	-3.5	1.7	-0.1
72 Scientific research and development	26	108.9	2.3	-1.0	-2.7
73 Advertising and market research	68	105.3	-3.7	3.5	-1.7
74 Other professional, scientific and technical activities	19	157.3	2.0	-0.4	-1.3
75 Veterinary activities	6	129.3	-0.1	1.6	2.2
<b>N Administrative and support service activities</b>	<b>421</b>	<b>126.1</b>	<b>-1.4</b>	<b>3.0</b>	<b>1.3</b>
77 Rental and leasing activities	98	115.9	-4.3	3.0	0.9
78 Employment activities	80	134.0	0.2	4.0	1.9
79 Travel agency, tour operator...	42	121.2	-0.2	1.5	-1.0
80 Security and investigation activities	21	131.3	-2.8	5.7	3.1
81 Services to buildings and landscape activities	50	120.4	-2.6	1.9	0.3
82 Office administrative, office support and other business support activities	131	134.6	0.4	2.6	1.9

(1) Quarter-on-quarter: last three months / previous three months.

Source: INSEE

### For further information :

- Complementary data (long series) and metadata (methodology, linked internet pages, etc.) are available on the web page of the index: <http://www.insee.fr/en/themes/info-rapide.asp?id=95>
- Historical data are available on BDM: [G1795](#), [G1797](#), [G1798](#), [G1800](#), [G1801](#).
- Press contact: [bureau-de-presse@insee.fr](mailto:bureau-de-presse@insee.fr)
-  Follow us on [Twitter @InseeFr\\_News](https://twitter.com/InseeFr_News): [https://twitter.com/InseeFr\\_News](https://twitter.com/InseeFr_News)

Next issue: 30 June 2016