

## ■ Turnover in the wholesale trade and business services – April 2016

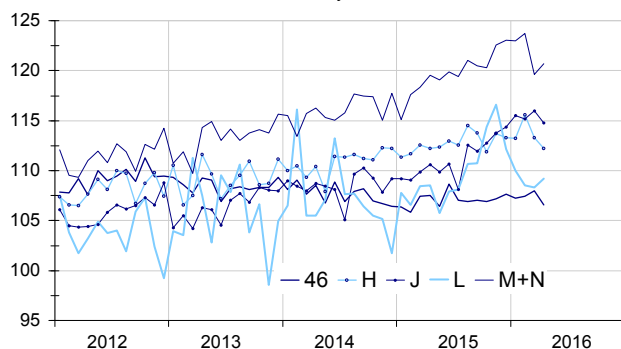
### In April 2016, the turnover fell back in wholesale trade and recovered in business support activities

Every index in this issue is in value (tax excluded), seasonally and working day adjusted (SA-WDA). The commentary shows variations of subsections by decreasing contribution. The contribution of a subsection depends on the extent of the change and on its weight.

In April 2016, the turnover dropped in *wholesale trade, except for motor vehicles and motorcycles* (–1.3%), in *transportation and storage* (–0.9%), and in *information and communication* (–1.0%). By contrast, it increased in *business support activities* (+0.9%) and in *real estate activities* (+0.8%).

#### Wholesale trade and business services

Turnover indices, SA-WDA value, Base year 2010



Source: INSEE

#### Downturn in wholesale trade, except of motor vehicles and motorcycles

In April 2016, the turnover of the *wholesale trade, except of motor vehicles and motorcycles* sector fell back (–1.3% after +0.5% in March). It declined in most sub-sectors of wholesale trade and particularly for wholesalers of *household goods* (–2.0%), *wholesalers of food, beverages and tobacco* (–1.9%) and for wholesalers *on a fee or contract basis* (–2.0%). However, it increased again for wholesalers of *other machinery, equipment and supplies* (+1.3% after +1.1%).

The turnover of the *wholesale trade, except of motor vehicles and motorcycles* sector was stable over the last three months (T/T–1) and grew moderately year on year (+0.4%, T/T–4).

#### Further decline in transportation and storage

In April, the turnover of *transportation and storage* shrank again (–0.9% after –2.0% in March). It continued to decline in *land transport* (–2.3% after –2.5%) and it fell back sharply in *postal and courier activities* (–3.0% after +0.7%). By contrast, it picked up in *air transport* (+1.6% after –0.4%) and to a lesser extent in *warehousing and support activities for transportation* (+0.4% after –2.4%).

The turnover of *transportation and storage* increased moderately over the last three months (+0.3%) and over the year (+1.4%).

#### Downturn in information and communication

The turnover in *information and communication* fell back in April (–1.0% after +0.7% in March). It declined in all sub-sectors, in particular in *computer programming, consultancy and related activities* (–1.7%), in *motion picture, video and television programme production* (–2.8%), in publishing activities (–1.0%) and in *information service activities* (–2.0%). The turnover in *information and communication* increased over the last three months (+0.6%) and strongly over the year (+5.0%).

#### Variation of the turnover in the wholesale trade and business services

SA-WDA value, Base year 2010

Nace classification	Weight	Change in %			
		April/March	March/Febr.	q-o-q (1)	y-o-y (2)
<b>46 Wholesale trade, except of motor vehicles and motorcycles</b>	<b>1000</b>	<b>–1.3</b>	<b>0.5</b>	<b>0.0</b>	<b>0.4</b>
<b>H Transportation and storage</b>	<b>1000</b>	<b>–0.9</b>	<b>–2.0</b>	<b>0.3</b>	<b>1.4</b>
<b>J Information and communication</b>	<b>1000</b>	<b>–1.0</b>	<b>0.7</b>	<b>0.6</b>	<b>5.0</b>
<b>L Real estate activities</b>	<b>1000</b>	<b>0.8</b>	<b>–0.1</b>	<b>–3.8</b>	<b>0.8</b>
<b>M+N Business support activities</b>	<b>1000</b>	<b>0.9</b>	<b>–3.3</b>	<b>–1.2</b>	<b>2.4</b>
<i>M Professional, scientific and technical activities</i>	579	3.3	–4.6	–2.3	2.2
<i>N Administrative and support service activities</i>	421	–2.3	–1.5	0.3	2.7

(1) Quarter-on-quarter: last three months / previous three months

(2) Year-on-year: last three months / same three months of previous year

The codes correspond to different levels of aggregation of the NACE classification.

Source: INSEE

### On the rise anew in real estate activities

The turnover of *real estate activities* recovered in April (+0.8%) after a virtual stability in March (-0.1%). It dropped steeply over the last three months (-3.8%, T/T-1) while it rose over the year (+0.8%, T/T-4).

### Rebound in business support activities

In April, the turnover of *business support activities* picked up (+0.9%) after a sharp decline in March (-3.3%). The rebound is buoyed by *professional, scientific and technical activities* (+3.3% after -4.6%), particularly *activities of head offices; management consultancy activities* (+9.3% after -8.6% in March). In contrast, the turnover declined again in *administrative and support service activities* (-2.3% after -1.5%). It fell in particular in *employment activities* (-3.5%) and in *office administrative, office support and other business support activities* (-2.5%).

The turnover in *business support activities* dropped over the last three months (-1.2%, T/T-1) while it rose over the year (+2.4%, T/T-4).

#### • Revisions

The variation of turnover for March 2016 has been lowered by 0.2 points in *transportation and storage* and in *information and communication*, and by 0.1 points in *real estate activities*. It has been revised upwards by 0.1 points in *business support activities*. It remained unchanged in *the wholesale trade, except of motor vehicles and motorcycles*. These revisions are due to the revision of raw data and to the updating of the seasonal-variation coefficients.

### Variation of the turnover in the wholesale trade and business services


SA-WDA value, Base year 2010

Nace Classification	Weight	April 2016	Change in %		
			April/ March	March /Feb.	q-o-q (1)
<b>46 Wholesale trade, except of motor vehicles and motorcycles</b>	<b>1000</b>	<b>106.6</b>	<b>-1.3</b>	<b>0.5</b>	<b>0.0</b>
461 Wholesale on a fee or contract basis	152	112.5	-2.0	0.0	-2.0
462 Wholesale of agricultural raw materials and live animals	54	109.5	-2.6	0.5	-1.6
463 Wholesale of food, beverages and tobacco	170	110.6	-1.9	-1.0	0.1
464 Wholesale of household goods	207	104.8	-2.0	1.1	-0.1
465 Wholesale of information and communication equipment	61	102.6	-1.2	2.7	-0.1
466 Wholesale of other machinery, equipment and supplies	125	118.1	1.3	1.1	3.8
467 Other specialised wholesale	197	90.1	-0.4	0.0	-1.2
469 Non specialised wholesale trade	34	131.0	-3.4	3.9	2.9
<b>H Transportation and storage</b>	<b>1000</b>	<b>112.2</b>	<b>-0.9</b>	<b>-2.0</b>	<b>0.3</b>
49 Land transport and transport via pipelines	407	112.6	-2.3	-2.5	-0.2
50 Water transport	73	129.8	-1.0	-0.8	-1.1
51 Air transport	91	102.6	1.6	-0.4	3.0
52 Warehousing and support activities for transportation	360	114.4	0.4	-2.4	0.7
53 Postal and courier activities	69	92.8	-3.0	0.7	-1.6
<b>J Information and communication</b>	<b>1000</b>	<b>114.8</b>	<b>-1.0</b>	<b>0.7</b>	<b>0.6</b>
58 Publishing activities	158	106.6	-1.0	2.0	0.3
59 Motion picture, video and television programme production...	76	108.4	-2.8	1.6	0.6
60 Programming and broadcasting activities	61	111.1	-0.2	2.5	0.2
61 Telecommunications	396	109.0	-0.2	0.5	0.7
62 Computer programming, consultancy and related activities	251	127.0	-1.7	-0.1	0.5
63 Information service activities	58	134.5	-2.0	0.3	2.3
<b>L Real estate activities</b>	<b>1000</b>	<b>109.2</b>	<b>0.8</b>	<b>-0.1</b>	<b>-3.8</b>
681 Buying and selling of own real estate	96	118.0	0.2	-2.6	2.1
682 Renting and operating of own or leased real estate	691	106.9	1.2	0.1	-5.7
683 Real estate activities on a fee or contract basis	213	114.4	-0.5	0.0	1.4
<b>M+N Business support activities</b>	<b>1000</b>	<b>120.7</b>	<b>0.9</b>	<b>-3.3</b>	<b>-1.2</b>
<b>M Professional, scientific and technical activities</b>	<b>579</b>	<b>119.2</b>	<b>3.3</b>	<b>-4.6</b>	<b>-2.3</b>
69 Legal and accounting activities	90	117.7	-1.6	-0.1	1.6
70 Activities of head offices...	219	123.2	9.3	-8.6	-4.9
71 Architectural and engineering activities...	151	115.1	-0.8	-3.8	-1.1
72 Scientific research and development	26	112.2	1.4	3.6	0.8
73 Advertising and market research	68	104.1	-1.3	-3.2	-2.0
74 Other professional, scientific and technical activities	19	161.4	2.4	2.3	-1.1
75 Veterinary activities	6	128.8	-0.2	-0.1	1.8
<b>N Administrative and support service activities</b>	<b>421</b>	<b>122.7</b>	<b>-2.3</b>	<b>-1.5</b>	<b>0.3</b>
77 Rental and leasing activities	98	115.1	-1.2	-3.1	0.2
78 Employment activities	80	128.7	-3.5	-0.2	1.3
79 Travel agency, tour operator...	42	115.7	-3.4	-1.0	-1.4
80 Security and investigation activities	21	126.6	-2.9	-3.0	2.0
81 Services to buildings and landscape activities	50	118.9	-1.0	-2.8	-1.0
82 Office administrative, office support and other business support activities	131	129.7	-2.5	-0.4	0.3

(1) Quarter-on-quarter: last three months / previous three months.

Source: INSEE

#### For further information :

- Complementary data (long series) and metadata (methodology, linked internet pages, etc.) are available on the web page of the index: <http://www.insee.fr/en/themes/info-rapide.asp?id=95>
- Historical data are available on BDM: [G1795](#), [G1797](#), [G1798](#), [G1800](#), [G1801](#).
- Press contact: [bureau-de-presse@insee.fr](mailto:bureau-de-presse@insee.fr)
-  Follow us on Twitter @InseeFr\_News: [https://twitter.com/InseeFr\\_News](https://twitter.com/InseeFr_News)

Next issue: 29 July 2016