

Informations Rapides

10 juin 2016 - n° 150

Main indicators



Industrial Production Indices – April 2016

In April 2016, manufacturing output bounced back (+1.3%)

Please note: all the series are seasonally (SA) and working-day adjusted (WDA).

The commentary shows variations of subsections by decreasing contribution. The contribution of a subsection depends on the extent of the change and on its weight.

In April 2016, output recovered in the **manufacturing industry** (+1.3% after -1.0% in March), as well as in the **whole industry** (+1.2% after -0.4%).

Manufacturing output diminished over the past three months (-1.2%)

Over the past three months, output diminished in the manufacturing industry (-1.2% q-o-q), and to a lesser extent in the overall industry (-0.6%).

Output decreased sharply in *other manufacturing* (-2.3%), in the *manufacture of electrical and electronic equipment; machine equipment* (-1.9%) and in the *manufacture of coke and refined petroleum products* (-1.4%). It was stable in the *manufacture of food products and beverages*. Conversely, output jumped in *mining and quarrying; energy; water supply* (+3.6%) and in the *manufacture of transport equipment* (+2.7%).

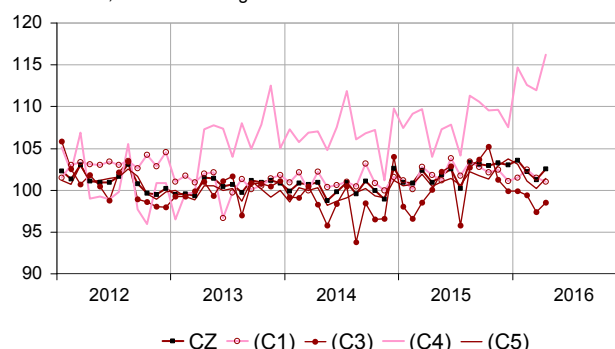
Over the year, manufacturing output increased (+0.6%)

Manufacturing output of the past three months of 2016 improved compared to the same months of 2015 (+0.6%, y-o-y); so did overall industrial output (+0.5% y-o-y).

Over the year, manufacturing output soared in the *manufacture of transport equipment* (+5.6%). It was stable or virtually stable in the *manufacture of food products and beverages* (+0.1%), in the *manufacture of electrical and electronic equipment* (+0.1%), in *mining and quarrying; energy; water supply* (0.0%), and in *other manufacturing* (-0.1%). Conversely, it plummeted in the *manufacture of coke and refined petroleum products* (-7.6%).

Monthly Industrial Production Indices

2010 based, SA-WDA changes in %



Legend: CZ: Manufacturing - (C1): Manufacture of food products and beverages - (C3): Electrical and electronic equipment; machine equipment - (C4): Manufacture of transport equipment - (C5): Other manufacturing
Sources: INSEE, SSP, SOeS

Variation of the Industrial Production

2010 based, SA-WDA changes in %

	April / March	March / Feb.	Q-o-Q change (1)	Year on year change (2)
NA : A10, (A17)				
BE: INDUSTRY	1.2	-0.4	-0.6	0.5
CZ: Manufacturing	1.3	-1.0	-1.2	0.6
(C1): Manufacture of food products and beverages	-0.5	-1.0	0.0	0.1
(C2): Manufacture of coke and refined petroleum products	1.9	2.9	-1.4	-7.6
(C3): Electrical and electronic equipment; machine equipment	1.1	-2.0	-1.9	0.1
(C4): Manufacture of transport equipment	3.8	-0.5	2.7	5.6
(C5): Other manufacturing	1.2	-0.9	-2.3	-0.1
DE: Mining and quarrying; energy; water supply; waste management	0.5	3.7	3.6	0.0
FZ: CONSTRUCTION	0.7	1.3	-2.3	-2.8

(1) Last three months / previous three months
(2) Last three months / same three months of previous year
The codes correspond to the level of aggregation A 10 (A 17) of the "NA" aggregated classification based on the French classification of activities NAF rev.2.
Sources: INSEE, SSP, SOeS

Variation of the Industrial Production

2010 based, SA-WDA changes in %

NA : A10, (A17), [A38 ou A64]	April 2016	April / March	March / Feb.	Quarter on quarter change
BE: INDUSTRY	101.9	1.2	-0.4	-0.6
CZ: Manufacturing	102.5	1.3	-1.0	-1.2
(C1): Man. of food products and beverages	101.0	-0.5	-1.0	0.0
(C2): Man. of coke and refined petroleum products	88.7	1.9	2.9	-1.4
(C3): Electrical and electronic equipment; machine equipment	98.5	1.1	-2.0	-1.9
[CI] Man. of computer, electronic and optical products	101.4	0.5	-0.8	-3.1
[CJ] Man. of electrical equipment	86.2	-0.2	-1.1	-0.8
[CK] Man. of machinery and equipment n.e.c. (1)	102.7	2.4	-3.6	-1.2
(C4): Man. of transport equipment	116.3	3.8	-0.5	2.7
[CL1] Man. of motor vehicles, trailers and semi-trailers	102.2	3.0	-2.9	2.4
[CL2] Man. of other transport equipment	130.2	4.5	1.5	2.9
(C5): Other manufacturing	101.4	1.2	-0.9	-2.3
[CB] Man. of textiles, wearing apparel, leather and related products	99.3	5.1	-3.0	1.4
[CC] Man. of wood and paper products; printing and reproduction of recorded media	85.9	0.2	-1.6	-2.4
[CE] Man. of chemicals and chemical products	113.6	0.9	-3.4	-2.8
[CF] Man. of basic pharmaceutical products and pharmaceutical preparations	109.5	0.0	2.3	-6.5
[CG] Man. of rubber and plastics products, and other non-metallic mineral products	98.4	1.2	-0.4	0.3
[CH] Man. of basic metals and fabricated metal products, except machinery and equipment	93.6	0.6	-1.5	-2.9
[CM] Other manufacturing; repair and installation of machinery and equipment	106.7	2.1	0.0	-1.4
DE: Mining and quarrying; energy; water supply; waste management	98.2	0.5	3.7	3.6
[BZ] Mining and quarrying	88.7	0.6	-3.7	-4.4
[DZ] Electricity, gas, steam and air-conditioning supply	98.5	0.6	5.1	5.4
[EZ] Water supply; sewerage, waste management and remediation	102.0	-0.2	-1.8	-3.8
FZ: CONSTRUCTION	85.7	0.7	1.3	-2.3
MIGs (2)				
Capital goods	107.1	3.1	-1.4	-0.3
Intermediate goods	96.8	-0.1	-1.1	-1.9
Consumer durables	105.8	4.1	0.1	-2.3
Consumer non-durables	103.7	0.0	-0.5	-1.8
Energy	98.0	0.6	4.2	3.9

(1) n.e.c.: not elsewhere classifiable

(2) Main industrial groupings: definition in Commission regulation EC of June 14th 2007

Sources: INSEE, SSP, SOeS

In April 2016, output rallied in "other manufacturing" (+1.2% after -0.9%)

Output bounced back in almost all branches within "other manufacturing": strongly in *other manufacturing repair and installation of machinery and equipment* (+2.1%), and in the *manufacture of textiles, wearing apparel* (+5.1%), and more moderately in the *manufacture of rubber and plastics products, and other non-metallic mineral products* (+1.2%), in the *manufacture of basic metals and fabricated metal products, except machinery and equipment* (+0.6%), and in *chemicals* (+0.9%).

Output jumped in the manufacture of transport equipment (+3.8% after -0.5%)

Output expanded at a much faster pace in the *manufacture of other transport equipment* (+4.5% after +1.5% in March). It recovered sharply in the *manufacture of motor vehicles, trailers and semi-trailers* (+3.0%) after a drop of a similar magnitude in March (-2.9%).

Output rebounded in the electrical and electronic equipment; machine equipment (+1.1% after -2.0%)

Output picked up markedly in the *manufacture of machinery and equipment n.e.c.* (+2.4% after -3.6%) and more moderately in the *manufacture of computer, electronic and optical products* (+0.5%), but faltered in the *manufacture of electrical equipment* (-0.2%).

Output slowed in mining and quarrying; energy; water supply; waste management (+0.5% after +3.7%)

Output slowed down in particular in *electricity, gas, steam and air-conditioning supply* (+0.6% after +5.1%).

Output grew in the manufacture of coke and refined petroleum products (+1.9% after +2.9%)

Output went up again in the *manufacture of coke and refined petroleum products* (+1.9% after +2.9%).

Output dipped in the manufacture of food products and beverages (-0.5% after -1.0%)

Output weakened again in the *manufacture of food products and beverages* (-0.5% after -1.0%), in particular in the processing and preparation of meat.

Revisions for March 2016

Measure of variations' revisions

(in percentage points %)

	March / Feb.	Feb. / Jan.	Jan. / Dec.	Q1 2016 / Q4 2015	2015 / 2014
Industry (BE)	-0.04	0.09	-0.03	0.04	0.02
raw serie	-0.02	-0.08	0.03	-0.05	0.02
SA-WDA coefficient	-0.02	0.17	-0.06	0.09	0.00
Manufacturing (CZ)	-0.05	0.07	-0.02	0.01	0.02
raw serie	0.00	-0.09	0.02	-0.07	0.02
SA-WDA coefficient	-0.05	0.16	-0.04	0.08	0.00

How to read it: in the manufacturing sector, the SA-WDA evolution between February 2016 and March 2016 has been revised downwards by -0.05 points, 0.0 due to the revision of the raw serie and -0.05 to the new calculation of the SA-WDA.

Sources: INSEE, SSP, SOeS

For more information:

- Complementary data (long series) and metadata (methodology, linked internet pages, etc.) are available on the web page of this index: <http://www.insee.fr/en/themes/info-rapide.asp?id=10>
- Historical data are available on the BDM: [G1397](#), [G1398](#), [G1400](#), [G1401](#), [G1411](#).
- Press contact: bureau-de-presse@insee.fr
- Follow us on [Twitter](#) @InseeFr_News: https://twitter.com/InseeFr_News

Next issue: July 8th 2016, 8:45 AM