

# Informations Rapides

31 mai 2016 - n° 145



## ■ Turnover in industry and construction – March 2016

### In March 2016, the turnover fell slightly in the manufacturing industry (–0.2%)

Every index in this issue is in value (tax excluded), seasonally and working day adjusted. The commentary shows variations of subsections by decreasing contribution. The contribution of a subsection depends on the extent of the change and on its weight.

In March 2016, the turnover fell back slightly in the **manufacturing industry** (–0.2%) after a virtual stability in February (+0.1%). Exports declined more substantially (–0.6%).

In the **industry as a whole**, the turnover decreased slightly (–0.2%) after a rise in February (+0.7%), owing to a drop in the *mining and quarrying; energy; water supply; waste management* sector (–0.5%, after +3.6% in February).

#### Fall over the first quarter (–1.1%)

Over the first quarter of 2016, the turnover went down in the **manufacturing industry** as well as in the **industry as a whole** (–1.1%) compared to the last quarter of 2015. It dropped dramatically in the *manufacture of coke and refined petroleum products* (–10.3%), and, more moderately, in the *manufacture of transport equipment* (–2.7%). It fell too in *other manufacturing* (–0.5%), mainly in the *manufacture of chemicals and chemical products* (–0.9%) and in the *manufacture of rubber, plastics and non-metallic mineral products* (–1.0%). Conversely, it rose over the first quarter in the *manufacture of food products and beverages* (+0.5%). It remained virtually stable in the *capital goods industry* (+0.1%).

#### Decline compared to the previous year (–0.6%)

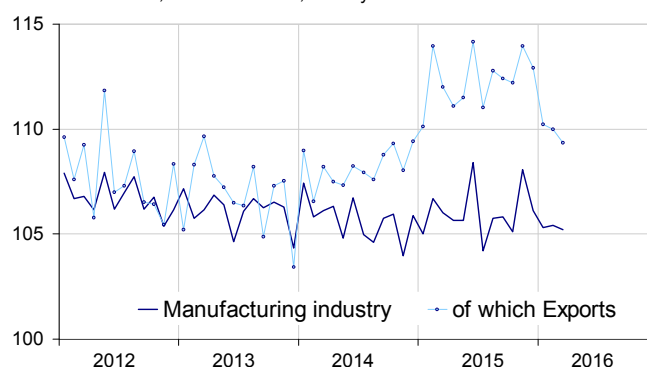
In the **manufacturing industry**, the turnover declined in the first quarter of 2016, compared to the same quarter of 2015 (–0.6%, y-o-y).

Over this period, the turnover plummeted in the *manufacture of coke and refined petroleum products* (–23.3%) as a result of the fall in producer prices. On the contrary, it went up in the *manufacture of transport equipment* (+1.7%), in the *manufacture of food products and beverages* (+1.1%) and in the *capital goods industry* (+1.2%). It levelled off in *other manufacturing* (+0.1%).

In the **industry as a whole**, the turnover declined more (–0.7%) due to a fall in the *mining and quarrying, energy, etc.* (–1.6%).

#### Turnover in manufacturing industry

Turnover indexes, SA-WDA value, Base year 2010



Source: INSEE

#### Variation of the turnover in industry and construction

SA-WDA value, Base year 2010

NA: A 10, (A 17)	Weight**	Change in %			
		Mar./ Feb.	Feb./ Jan.	q-o-q (1)	y-o-y (2)
BE: INDUSTRY	10000	–0.2	0.7	–1.1	–0.7
CZ: MANUFACTURING INDUSTRY	8346	–0.2	0.1	–1.1	–0.6
Of which Exports	2677	–0.6	–0.2	–2.8	–1.9
(C1): Manufacture of food products and beverages	1685	–0.2	0.9	0.5	1.1
(C2): Manufacture of coke and refined petroleum products	561	–0.4	–6.0	–10.3	–23.3
(C3): Capital goods industry	953	–0.7	–0.5	0.1	1.2
(C4): Manufacture of transport equipment	1265	0.3	1.2	–2.7	1.7
(C5): Other manufacturing	3881	–0.2	0.0	–0.5	0.1
DE: Mining and quarrying; energy; water supply; waste management	1654	–0.5	3.6	–1.3	–1.6
FZ: CONSTRUCTION	10000	–1.3	1.2	–0.1	0.3

\*\* 10000=B...E and F

(1) Quarter-on-quarter: last three months / previous three months

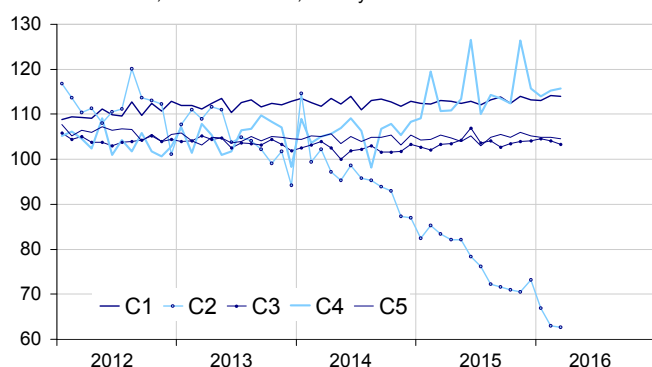
(2) Year-on-year: last three months / same three months of previous year

The codes correspond to different levels of aggregation of the NACE classification.

Source: INSEE

## Turnover in manufacturing industry by sector

Turnover indexes, SA-WDA value, Base year 2010



Source: INSEE

### Further decline in equipments (-0.7%)

The turnover in the *capital goods* industry declined again in March (-0.7%, after -0.5% in February), only due to the *manufacture of machinery and equipment n.e.c.* (-2.6%). Conversely, the turnover grew in the *manufacture of computer, electronic and optical products* (+1.0%) and in the *manufacture of electrical equipment* (+0.5%).

### Slight fall in other manufacturing (-0.2%)

The turnover in *other manufacturing* decreased slightly in March (-0.2%). It fell back in *other manufacturing: industries* (-0.7%), in the *manufacture of rubber, plastics and non-metallic mineral products* (-0.7%) and in that of *wood and paper products* (-0.9%). However, it was stable in the *manufacture of chemicals and chemical products* and it rebounded in the *manufacture of basic metals and fabricated metal products* (+0.7%).

### Slight growth in transport equipments (+0.3%)

The turnover in the *manufacture of transport equipment* grew slightly in March (+0.3%, after +1.2% in February). It picked up in the *manufacture of other transport equipment* (+1.5%, after -2.0%) while it slipped back in the *manufacture of motor vehicles, trailers and semi-trailers* (-0.9%, after +5.0% in February).

### Slight downturn in food products and beverages (-0.2%)

The turnover edged in the manufacture of food products and beverages (-0.2%) after a rise in February (+0.9%).

### Moderate fall in coke and refined petroleum products (-0.4%)

In March, the turnover fell once again in the manufacture of coke and refined petroleum products (-0.4%), albeit more slowly than in the two previous months (-6.0% in February and -8.5% in January).

### • Revisions: +0.1 points in February in the manufacturing industry

In the *manufacturing industry*, the evolution of the turnover in February 2016 was revised upwards, at +0.1% instead of 0.0% published previously. It was unchanged in the *industry*.

## Indexes of turnover in industry and construction

SA-WDA, based year 2010

NA: A10, (A17), [A38 or A64]	Weight*	Mar. 2016	Change in %		
			Mar./ Feb.	Feb./ Jan.	q-o-q (2)
<b>BE: INDUSTRY</b>	<b>10000</b>	<b>106.5</b>	<b>-0.2</b>	<b>0.7</b>	<b>-1.1</b>
<b>CZ: MANUFACTURING INDUSTRY</b>	<b>8346</b>	<b>105.2</b>	<b>-0.2</b>	<b>0.1</b>	<b>-1.1</b>
of which Exports	2677	109.3	-0.6	-0.2	-2.8
(C1): Man. of food products and beverages	1685	114.0	-0.2	0.9	0.5
of which Exports	285	116.1	-1.8	1.7	0.6
(C2): Man. of coke and refined petroleum products	561	62.7	-0.4	-6.0	-10.3
(C3): Capital goods	953	103.3	-0.7	-0.5	0.1
of which Exports	469	100.4	-2.2	-0.4	-0.7
[CI] Man. of computer, electronic and optical products	306	101.4	1.0	-1.6	0.7
[CJ] Man. of electrical equipment	245	98.3	0.5	-0.2	-0.4
[CK] Man. of machinery and equipment n.e.c. (1)	402	107.8	-2.6	0.1	-0.1
(C4): Man. of transport equipment	1265	115.7	0.3	1.2	-2.7
of which Exports	617	123.9	1.7	-0.3	-4.9
[CL1] Man. of motor vehicles, trailers and semi-trailers	702	99.0	-0.9	5.0	-3.0
[CL2] Man. of other transport equipment	562	136.6	1.5	-2.0	-2.4
(C5): Other manufacturing	3881	104.6	-0.2	0.0	-0.5
of which Exports	1237	106.6	-1.0	-0.5	-2.3
[CB] Man. of textiles, wearing apparel, leather and related products	188	108.6	0.5	-0.2	-0.7
[CC] Man. of wood and paper products; printing and reproduction of recorded media	436	96.8	-0.9	0.0	-0.9
[CE] Man. of chemicals and chemical products	745	100.0	0.0	-1.3	-0.9
[CF] Man. of basic pharmaceutical products and pharmaceutical preparations	304	108.3	-0.2	1.2	-1.1
[CG] Man. of rubber and plastics products, and other non-metallic mineral products	629	103.2	-0.7	1.2	-1.0
[CH] Man. of basic metals and fabricated metal products, except machinery and equipment	926	102.0	0.7	-1.2	-0.1
[CM] Other manufacturing: repair and installation of machinery and equipment	653	117.3	-0.7	1.0	0.2
<b>DE: Mining and quarrying; energy, water supply, sewerage, waste management</b>	<b>1654</b>	<b>113.2</b>	<b>-0.5</b>	<b>3.6</b>	<b>-1.3</b>
[BZ] Mining and quarrying	70	90.4	-1.0	-4.0	-0.9
[DZ] Electricity, gas, steam and air-conditioning supply	1205	115.3	-0.2	3.7	-1.6
[EZ] Water supply; sewerage, waste management and remediation	379	110.6	-1.5	4.5	-0.2
<b>FZ: CONSTRUCTION</b>	<b>10000</b>	<b>103.1</b>	<b>-1.3</b>	<b>1.2</b>	<b>-0.1</b>

\*\* 10000=B...E and F

(1) n.e.c.: not elsewhere classified

(2) Quarter-on-quarter: last three months / previous three months

Source: INSEE

### Measure of variations' revisions

(in percentage points)

	Feb./ Jan.	Jan./ Dec.	Dec./ Nov.	Q4 2014/ Q3 2014	2014/ 2013
<b>Industry (BE)</b>	<b>0.01</b>	<b>-0.16</b>	<b>0.10</b>	<b>0.08</b>	<b>-0.01</b>
raw serie	0.07	-0.13	0.19	0.13	-0.01
SA-WDA coeff.	-0.06	-0.02	-0.10	-0.05	0.00
<b>Manufacturing industry (CZ)</b>	<b>0.03</b>	<b>-0.19</b>	<b>0.10</b>	<b>0.11</b>	<b>-0.02</b>
raw serie	0.23	-0.17	0.23	0.15	-0.02
SA-WDA coeff.	-0.20	-0.02	-0.12	-0.04	0.00

How to read it: in the manufacturing industry, the SA-WDA evolution between January and February 2016 was revised by +0.03 points: +0.23 points were due to the raw serie's revision and -0.20 points to the new calculation of the SA-WDA.

Source: INSEE

### For further information:

- Complementary data (long series) and metadata (methodology, linked internet pages, etc.) are available on the web page of this index: <http://www.insee.fr/en/themes/info-rapide.asp?id=53>
- Historical data are available on the BDM: [G1781](#), [G1782](#), [G1783](#), [G1784](#), [G1785](#), [G1786](#) and [G1787](#)
- Press contact: [bureau-de-presse@insee.fr](mailto:bureau-de-presse@insee.fr)
- Follow us on Twitter @InseeFr\_News: [https://twitter.com/InseeFr\\_News](https://twitter.com/InseeFr_News)

Next issue: 30 June 2016