

# Informations Rapides

28 janvier 2016 - n° 27



## ■ Turnover in industry and construction – November 2015

### In November 2015, the turnover rebounded in the manufacturing industry (+1.3%)

*Every index in this issue is in value (tax excluded), seasonally and working day adjusted. The commentary shows variations of subsections by decreasing contribution. The contribution of a subsection depends on the extent of the change and on its weight.*

In November 2015, the turnover bounced back in the **manufacturing industry** (+1.3%, after -1.0% in October). Exports recovered too (+1.6%, after -0.9%).

In the **industry as a whole**, the turnover also rebounded, though less markedly (-1.0%), due to a fall in the *mining and quarrying; energy; water supply* (-0.7%, after -0.9%).

#### Slight fall over the last three months (-0.2%)

Over the last three months, the turnover went down slightly in the *manufacturing industry* (-0.2% q-o-q) as well as in the *industry as a whole* (-0.3%).

The turnover dropped considerably in the *manufacture of coke and refined petroleum products* (-5.7%). It fell, to a lesser extent, in the *manufacture of food products and beverages* (-0.5%) and in the *electrical and electronic equipment; machine equipment* (-0.2%). On the contrary, the turnover grew in the *manufacture of transport equipment* (+0.8%). It levelled off in *other manufacturing*.

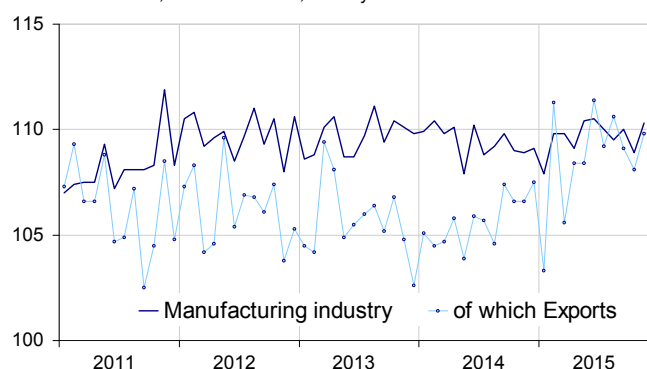
#### Rise compared to last year (+0.5%)

The turnover went up over the last three months, compared to the same three months of the previous year, in the *manufacturing industry* (+0.5%, y-o-y) as well as in the *industry as a whole* (+0.7%).

Over this period, the turnover plummeted, owing to the price fall, in the *manufacture of coke and refined petroleum products* (-19.2%). On the contrary, it grew dramatically in the *manufacture of transport equipment* (+8.0%), and more moderately in the *electrical and electronic equipment; machine equipment* (+1.5%) and in the *manufacture of food products and beverages* (+0.3%). It was stable in *other manufacturing*.

#### Turnover in manufacturing industry

Turnover indexes, SA-WDA value, Base year 2010



Source: INSEE

#### Variation of the turnover in industry and construction

SA-WDA value, Base year 2010

NA: A 10, (A 17)	Weight**	Change in %			
		Nov./ Oct.	Oct./ Sep.	q-o-q (1)	y-o-y (2)
<b>BE: INDUSTRY</b>	<b>10000</b>	<b>1.0</b>	<b>-1.0</b>	<b>-0.3</b>	<b>0.7</b>
<b>CZ: MANUFACTURING INDUSTRY</b>	<b>8373</b>	<b>1.3</b>	<b>-1.0</b>	<b>-0.2</b>	<b>0.5</b>
Of which Exports	2731	1.6	-0.9	-1.3	2.0
(C1): Manufacture of food products and beverages	1647	1.8	-1.6	-0.5	0.3
(C2): Manufacture of coke and refined petroleum products	478	7.6	-8.1	-5.7	-19.2
(C3): Electrical and electronic equipment; machine equipment	1005	-0.7	0.1	-0.2	1.5
(C4): Manufacture of transport equipment	1428	2.6	-1.1	0.8	8.0
(C5): Other manufacturing	3815	0.5	-0.1	0.0	0.0
DE: Mining and quarrying; energy; water supply; waste management	1627	-0.7	-0.9	-0.7	1.9
<b>FZ: CONSTRUCTION</b>	<b>10000</b>	<b>0.8</b>	<b>1.0</b>	<b>-0.2</b>	<b>-1.2</b>

\*\* 10000=B...E and F

(1) Quarter-on-quarter: last three months / previous three months

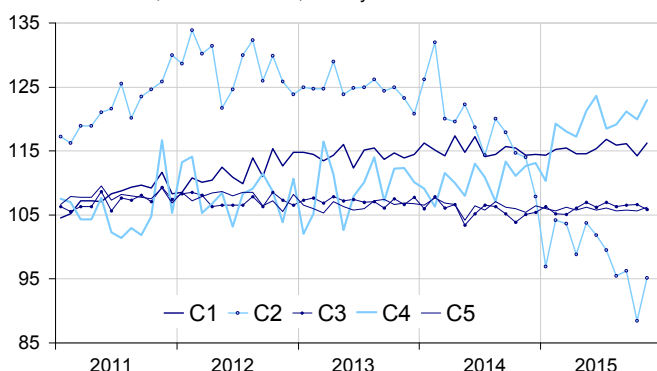
(2) Year-on-year: last three months / same three months of previous year

The codes correspond to different levels of aggregation of the NACE classification.

Source: INSEE

## Turnover in manufacturing industry by sector

Turnover indexes, SA-WDA value, Base year 2010



Source: INSEE

### Sharp rebound in transport equipment (+2.6%)

In November 2015, the turnover in the *manufacture of transport equipment* recovered sharply (+2.6%, after -1.1% in October). This rebound is pushed up by the manufacture of other transport equipment (+2.7%, after -2.3%). The turnover in the *manufacture of motor vehicles, trailers and semi-trailers*, improving for the fourth month in a row, accelerated (+2.6%, after +0.8%).

### Rebound in food products and beverages (+1.8%)

The turnover bounced back in November in the *manufacture of food products and beverages* (+1.8%, after -1.6% in October), mainly because of the *production of meat products*.

### Rise in other manufacturing (+0.5%)

In November, the turnover grew in *other manufacturing* (+0.5%) after a virtual stability in October (-0.1%). It increased mainly in the *manufacture of basic metals and fabricated metal products* (+1.4%), in the *manufacture of rubber and plastics and non-mineral metallic products* (+0.8%) and in the *manufacture of wood and paper products* (+1.0%). Conversely, it declined again in the *manufacture of chemicals and chemical products* (-0.8%) and in the *manufacture of basic pharmaceutical products and pharmaceutical preparations* (-0.6%).

### Sharp upturn in coke and refined petroleum products (+7.6%)

In November, the turnover rocketed in the *manufacture of coke and refined petroleum products* (+7.6%) after a dramatic fall in October (-8.1%).

### Fall in equipments (-0.7%)

The turnover in the *electrical and electronic equipment; machine equipment* fell back in November (-0.7%, after +0.1% in October). It dropped in all sectors: *manufacture of machinery and equipment n.e.c.* (-0.7%), *manufacture of electrical equipment* (-0.7%) and *manufacture of computer, electronic and optical products* (-0.4%).

#### • The fall in October is confirmed (-1.0%)

In the *manufacturing industry* as well as in the industry as a whole, the decline in October is confirmed at -1.0%.

## Indexes of turnover in industry and construction

SA-WDA, based year 2010

Industries:	Weight*	Nov. 2015	Change in %		
			Nov./ Oct.	Oct./ Sep.	q-o-q (1)
<b>BE: INDUSTRY</b>	<b>10000</b>	<b>110.4</b>	<b>1.0</b>	<b>-1.0</b>	<b>-0.3</b>
<b>CZ: MANUFACTURING INDUSTRY</b>	<b>8373</b>	<b>110.3</b>	<b>1.3</b>	<b>-1.0</b>	<b>-0.2</b>
of which Exports	2731	109.8	1.6	-0.9	-1.3
<b>(C1): Man. of food products and beverages</b>	<b>1647</b>	<b>116.2</b>	<b>1.8</b>	<b>-1.6</b>	<b>-0.5</b>
of which Exports	284	123.9	1.2	-1.1	-1.0
<b>(C2): Man. of coke and refined petroleum products</b>	<b>478</b>	<b>95.2</b>	<b>7.6</b>	<b>-8.1</b>	<b>-5.7</b>
<b>(C3): Electrical and electronic equipment; machine equipment</b>	<b>1005</b>	<b>105.9</b>	<b>-0.7</b>	<b>0.1</b>	<b>-0.2</b>
of which Exports	483	103.7	-1.3	0.8	-0.9
[CI] Man. of computer, electronic and optical products	269	103.7	-0.4	0.6	-0.1
[CJ] Man. of electrical equipment	302	100.1	-0.7	-0.7	0.3
[CK] Man. of machinery and equipment n.e.c.	434	111.4	-0.7	0.4	-0.5
<b>(C4): Man. of transport equipment</b>	<b>1428</b>	<b>123.0</b>	<b>2.6</b>	<b>-1.1</b>	<b>0.8</b>
of which Exports	693	112.0	3.4	-1.4	-2.3
[CL1] Man. of motor vehicles, trailers and semi-trailers	689	102.7	2.6	0.8	4.1
[CL2] Man. of other transport equipment	739	142.5	2.7	-2.3	-1.4
<b>(C5): Other manufacturing</b>	<b>3815</b>	<b>106.2</b>	<b>0.5</b>	<b>-0.1</b>	<b>0.0</b>
of which Exports	1213	108.5	1.6	-1.1	-1.0
[CB] Man. of textiles, wearing apparel, leather and related products	191	109.4	0.5	0.6	-0.5
[CC] Man. of wood and paper products; printing and reproduction of recorded media	427	102.2	1.0	0.5	0.4
[CE] Man. of chemicals and chemical products	706	105.1	-0.8	-1.4	-0.6
[CF] Man. of basic pharmaceutical products and pharmaceutical preparations	322	100.9	-0.6	-0.3	-0.7
[CG] Man. of rubber and plastics products, and other non-metallic mineral products	620	103.1	0.8	0.2	1.1
[CH] Man. of basic metals and fabricated metal products, except machinery and equipment	900	106.1	1.4	-0.3	-0.1
[CM] Other manufacturing; repair and installation of machinery and equipment	649	114.5	0.1	0.6	0.2
<b>DE: Mining and quarrying; energy, water supply, sewerage, waste management</b>	<b>1627</b>	<b>110.5</b>	<b>-0.7</b>	<b>-0.9</b>	<b>-0.7</b>
[BZ] Mining and quarrying	69	100.0	2.2	2.0	1.2
[DZ] Electricity, gas, steam and air-conditioning supply	1216	114.9	-0.8	-1.0	0.0
[EZ] Water supply; sewerage, waste management and remediation	342	96.9	-1.0	-1.2	-4.1
<b>FZ: CONSTRUCTION</b>	<b>10000</b>	<b>103.2</b>	<b>0.8</b>	<b>1.0</b>	<b>-0.2</b>

\*\* 10000=B...E and F

(1) Quarter-on-quarter: last three months / previous three months

Source: INSEE

### Measure of variations' revisions

(in point %)

	Oct./ Sep.	Sep./ Aug.	Aug./ July	Q3 2015/ Q2 2015	2014/ 2013
<b>Industry (BE)</b>	<b>0.00</b>	<b>0.00</b>	<b>0.09</b>	<b>0.06</b>	<b>0.02</b>
raw serie	0.09	0.00	0.00	0.00	0.00
SA-WDA coeff.	-0.09	0.00	0.09	0.06	0.02
<b>Manufacturing industry (CZ)</b>	<b>0.00</b>	<b>-0.09</b>	<b>0.18</b>	<b>0.06</b>	<b>0.04</b>
raw serie	0.00	0.00	0.00	0.00	0.00
SA-WDA coeff.	0.00	-0.09	0.18	0.06	0.04

How to read it: in the industry, the SA-WDA evolution between September and October 2015 is not revised: the correction due to the raw serie's revision (+0.09 points) is balanced by the correction due to the new calculation of the SA-WDA (-0.09 points).

Source: INSEE

### For further information:

- Complementary data (long series) and metadata (methodology, linked internet pages, etc.) are available on the web page of this index: <http://www.insee.fr/en/themes/info-rapide.asp?id=53>
- Historical data are available on the BDM: [G1444](#), [G1445](#), [G1446](#), [G1447](#), [G1448](#) and [G1529](#)
- Press contact: [bureau-de-presse@insee.fr](mailto:bureau-de-presse@insee.fr)
- Follow us on Twitter @InseeFr\_News: [https://twitter.com/InseeFr\\_News](https://twitter.com/InseeFr_News)

Next issue: February 26<sup>th</sup>, 2016