

Informations Rapides

26 février 2016 - n° 56



■ Turnover in industry and construction – December 2015

In December 2015, the turnover fell back in the manufacturing industry (–1.1%)

Warning: From the release of the indices for January 2016, on March 31, 2016, the turnover index series will be produced according to a new process, that improve their quality. The series will be recalculated over the period 1999-2015. Further information concerning these changes is available on the Web page of this index.

In December 2015, the turnover fell back in the **manufacturing industry** (–1.1%, after +1.3% in November). Exports declined too (–0.6%, after +1.4%). In the **industry as a whole**, the turnover decreased as well (–1.0%, after +1.1%).

Decline over the fourth quarter (–0.4%)

Over the fourth quarter of 2015, the turnover went down by 0.4%, compared to the third quarter, both in the *manufacturing industry* and in the *industry as a whole*.

The turnover dropped considerably in the *manufacture of coke and refined petroleum products* (–5.2%). It fell, to a lesser extent, in the *manufacture of food products and beverages* (–1.1%), in the *mining and quarrying; energy; water supply* (–0.7%) and in the *electrical and electronic equipment; machine equipment* (–0.4%). On the contrary, the turnover grew in the *manufacture of transport equipment* (+0.9%). It remained virtually stable in *other manufacturing* (+0.1%).

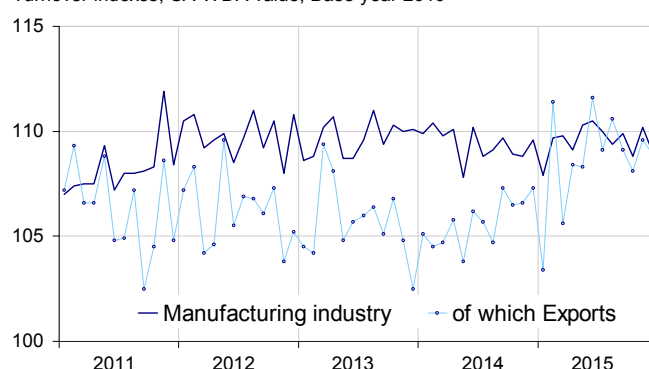
Slight rise over the year (+0.2%)

In the *manufacturing industry*, the turnover went up slightly over the fourth quarter of 2015, compared to the fourth quarter of 2014 (+0.2%, y-o-y). It climbed more substantially in the *industry as a whole* (+0.6%) owed to a sharp rise in the *mining and quarrying; energy; water supply; waste management* (+2.2%).

Over this period, the turnover slumped in the *manufacture of coke and refined petroleum products* (–18.3%), due to the fall of producer prices. On the contrary, it improved sharply in the *manufacture of transport equipment* (+6.9%), and more moderately in the *electrical and electronic equipment; machine equipment* (+1.3%). It remained virtually stable in the *manufacture of food products and beverages* (–0.1%) and it levelled off in *other manufacturing*.

Turnover in manufacturing industry

Turnover indexes, SA-WDA value, Base year 2010



Source: INSEE

Variation of the turnover in industry and construction

SA-WDA value, Base year 2010

NA: A 10, (A 17)	Weight**	Change in %			
		Dec./Nov.	Nov./Oct.	q-o-q (1)	y-o-y (2)
BE: INDUSTRY	10000	–1.0	1.1	–0.4	0.6
CZ: MANUFACTURING INDUSTRY	8373	–1.1	1.3	–0.4	0.2
Of which Exports	2731	–0.6	1.4	–0.7	1.9
(C1): Manufacture of food products and beverages	1647	–1.6	1.7	–1.1	–0.1
(C2): Manufacture of coke and refined petroleum products	478	–3.4	6.6	–5.2	–18.3
(C3): Electrical and electronic equipment; machine equipment	1005	0.3	–0.7	–0.4	1.3
(C4): Manufacture of transport equipment	1428	–3.0	2.6	0.9	6.9
(C5): Other manufacturing	3815	–0.2	0.6	0.1	0.0
DE: Mining and quarrying; energy; water supply; waste management	1627	–0.2	–0.1	–0.7	2.2
FZ: CONSTRUCTION	10000	–1.2	0.7	0.6	–0.6

** 10000=B...E and F

(1) Quarter-on-quarter: last three months / previous three months

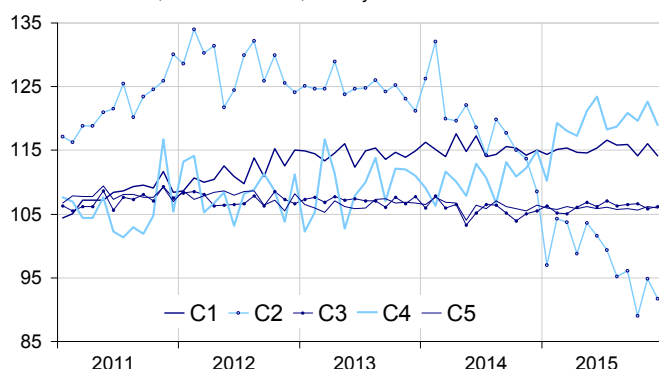
(2) Year-on-year: last three months / same three months of previous year

The codes correspond to different levels of aggregation of the NACE classification.

Source: INSEE

Turnover in manufacturing industry by sector

Turnover indexes, SA-WDA value, Base year 2010



Source: INSEE

Sharp downturn in transport equipment (–3.0%)

In December 2015, the turnover in the *manufacture of transport equipment* slipped back sharply (–3.0%, after +2.6% in November), in spite of a new rise in exports (+2.0%, after +3.3%). This decline was owed both to the *manufacture of transport equipment* (–2.7%) and to the *manufacture of motor vehicles, trailers and semi-trailers* (–3.4%, following a rise for four months in a row).

Drop in food products and beverages (–1.6%)

The turnover fell back in December in the *manufacture of food products and beverages* (–1.6%, after +1.7% in November).

Sharp decline in coke and refined petroleum products (–3.4%)

In December, the turnover dipped considerably in the *manufacture of coke and refined petroleum products* (–3.4%) after a dramatic growth in November (+6.6%).

Slight decrease in other manufacturing (–0.2%)

The turnover fell slightly in December in *other manufacturing* (–0.2%) after a rise in November (+0.6%). It declined mainly in the *manufacture of basic metals and fabricated metal products* (–1.6%), the *manufacture of rubber and plastic products* (–0.6%), and the *manufacture of wood and paper products* (–0.8%). On the other hand, it picked up sharply in the *manufacture of basic pharmaceutical products and pharmaceutical preparations* (+2.8%) and more moderately in the *manufacture of chemicals and chemical products* (+0.9%).

Slight rebound in equipments (+0.3%)

The turnover in the *electrical and electronic equipment; machine equipment* recovered slightly in December (+0.3%, after –0.7% in October). It bounced back in the *manufacture of machinery and equipment n.e.c.* (+1.3%). Conversely, it decreased again in the *manufacture of computer, electronic and optical products* (–0.7%) and in the *manufacture of electrical equipment* (–0.3%).

• The rise in November is confirmed at +1.3%

In the *manufacturing industry*, the rise in November 2015 is confirmed at +1.3%. It has been revised upwards by 0.1 points in the industry as a whole (+1.1% instead of 1.0%).

Indexes of turnover in industry and construction

SA-WDA, based year 2010

Industries:	Weight*	Dec. 2015	Change in %		
			Dec./ Nov.	Nov./ Oct.	q-o-q (1)
BE: INDUSTRY	10000	109.3	–1.0	1.1	–0.4
CZ: MANUFACTURING INDUSTRY	8373	109.0	–1.1	1.3	–0.4
of which Exports	2731	108.9	–0.6	1.4	–0.7
(C1): Man. of food products and beverages	1647	114.2	–1.6	1.7	–1.1
of which Exports	284	123.5	–0.2	1.1	–1.0
(C2): Man. of coke and refined petroleum products	478	91.7	–3.4	6.6	–5.2
(C3): Electrical and electronic equipment; machine equipment	1005	106.2	0.3	–0.7	–0.4
of which Exports	483	101.1	–2.3	–1.3	–1.7
[CI] Man. of computer, electronic and optical products	269	102.8	–0.7	–0.4	–0.4
[CJ] Man. of electrical equipment	302	99.7	–0.3	–0.6	–0.5
[CK] Man. of machinery and equipment n.e.c.	434	112.8	1.3	–0.8	–0.4
(C4): Man. of transport equipment	1428	119.0	–3.0	2.6	0.9
of which Exports	693	114.3	2.0	3.3	1.6
[CL1] Man. of motor vehicles, trailers and semi-trailers	689	98.3	–3.4	2.0	4.0
[CL2] Man. of other transport equipment	739	138.7	–2.7	3.0	–1.0
(C5): Other manufacturing	3815	106.0	–0.2	0.6	0.1
of which Exports	1213	106.0	–1.9	1.4	–1.8
[CB] Man. of textiles, wearing apparel, leather and related products	191	110.1	0.5	0.6	0.5
[CC] Man. of wood and paper products; printing and reproduction of recorded media	427	101.3	–0.8	1.0	0.5
[CE] Man. of chemicals and chemical products	706	106.5	0.9	–0.5	–1.2
[CF] Man. of basic pharmaceutical products and pharmaceutical preparations	322	103.9	2.8	–0.6	–0.5
[CG] Man. of rubber and plastics products, and other non-metallic mineral products	620	102.5	–0.6	0.8	0.9
[CH] Man. of basic metals and fabricated metal products, except machinery and equipment	900	104.1	–1.6	1.5	–0.2
[CM] Other manufacturing; repair and installation of machinery and equipment	649	114.2	–0.3	0.2	0.6
DE: Mining and quarrying; energy, water supply, sewerage, waste management	1627	111.1	–0.2	–0.1	–0.7
[BZ] Mining and quarrying	69	99.7	–0.6	2.2	2.8
[DZ] Electricity, gas, steam and air-conditioning supply	1216	116.1	0.3	–0.1	–0.2
[EZ] Water supply; sewerage, waste management and remediation	342	96.0	–1.7	–0.3	–3.6
FZ: CONSTRUCTION	10000	101.8	–1.2	0.7	0.6

** 10000=B...E and F

(1) Quarter-on-quarter: last three months / previous three months

Source: INSEE

Measure of variations' revisions

(in point %)

	Nov./ Oct.	Oct./ Sep.	Sep./ Aug.	Q3 2015/ Q2 2015	2014/ 2013
Industry (BE)	0.10	0.00	0.00	–0.03	–0.01
raw serie	0.36	0.00	0.00	0.00	0.00
SA-WDA coeff.	–0.26	0.00	0.00	–0.03	–0.01
Manufacturing industry (CZ)	0.00	0.00	0.00	–0.03	–0.01
raw serie	0.09	0.00	0.00	0.00	0.00
SA-WDA coeff.	–0.09	0.00	0.00	–0.03	–0.01

How to read it: in the manufacturing industry, the SA-WDA evolution between October and November 2015 is not revised, the raw serie's revision (+0.09 points) is balanced by the new calculation of the SA-WDA (–0.09 points).

Source: INSEE

For further information:

- Complementary data (long series) and metadata (methodology, linked internet pages, etc.) are available on the web page of this index: <http://www.insee.fr/en/themes/info-rapide.asp?id=53>
- Historical data are available on the BDM: [G1444](#), [G1445](#), [G1446](#), [G1447](#), [G1448](#) and [G1529](#)
- Press contact: bureau-de-presse@insee.fr
- Follow us on Twitter @InseeFr_News: https://twitter.com/InseeFr_News

Next issue: 31 March, 2016