

Informations Rapides

28 janvier 2016 - n° 28



■ Turnover in the wholesale trade and business services - November 2015

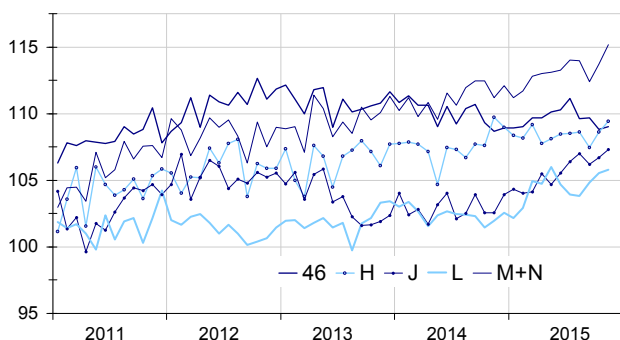
In November 2015, the turnover improved in the wholesale trade and in business services

Every index in this issue is in value (tax excluded), seasonally and working day adjusted (SA-WDA). The commentary shows variations of subsections by decreasing contribution. The contribution of a subsection depends on the extent of the change and on its weight.

In November 2015, the turnover recovered slightly in the *wholesale trade*, except for *motor vehicles and motorcycles* (+0.2% after -0.8%). It rose again in *business support activities* (+1.3%), in *transportation and storage* (+0.8%), in *information and communication* (+0.6%) as well as in *real estate activities* (+0.2%).

Wholesale trade and business services

Turnover indices, SA-WDA value, Base year 2010



Source: INSEE

Slight rebound in the wholesale trade, except of motor vehicles and motorcycles

In November 2015, the turnover of the *wholesale trade*, except of *motor vehicles and motorcycles* increased modestly (+0.2% after -0.8% in October). This slight rebound has driven up by wholesalers of *food, beverages and tobacco* (+2.3%), and those *on a fee or contract basis* (+0.9%). By contrast, the turnover decreased in *other specialised wholesale* (-1.5%) and in the *wholesale of household goods* (-0.9%).

The turnover of the *wholesale trade*, except of *motor vehicles and motorcycles* decreased over the last three months (-1.1%) and over the year (-0.3%).

Further increase in transportation and storage

In November, the turnover of *transportation and storage* rose again (+0.8% after +1.1% in October). It increased markedly in *land transport and transport via pipelines* (+2.8%) and in *postal and courier activities* (+4.0%). By contrast, it declined in *warehousing and support activities for transportation* (-1.2%), in *air transport* (-1.8%) and *water transport* (-0.3%).

The turnover of *transportation and storage* was stable over the last three months and virtually stable over the year (+0.1%).

More moderate rise in real estate activities

In November, the turnover of *real estate activities* continued to grow, though at a more moderate pace (+0.2% after 0.7% in October and +1.0% in September). It rose over the last three months (+1.2%) and over the year (+3.4%).

Variation of the turnover in the wholesale trade and business services

SA-WDA value, Base year 2010

Nace classification	Weight	Change in %			
		Nov./ Oct.	Oct./S ept.	q-o-q (1)	y-o-y (2)
46 Wholesale trade, except of motor vehicles and motorcycles	1000	0.2	-0.8	-1.1	-0.3
H Transportation and storage	1000	0.8	1.1	0.0	0,1
J Information and communication	1000	0.6	0.5	0.4	3.6
L Real estate activities	1000	0.2	0.7	1.2	3.4
M+N Business support activities	1000	1.3	1.2	0.0	1.5
<i>M Professional, scientific and technical activities</i>	579	1.2	1.8	-0.3	1.9
<i>N Administrative and support service activities</i>	421	1.4	0.3	0.5	1.1

(1) Quarter-on-quarter: last three months / previous three months

(2) Year-on-year: last three months / same three months of previous year

The codes correspond to different levels of aggregation of the NACE classification.

Source: INSEE

Further increase in information and communication

The turnover in *information and communication* expanded again in November (+0.6% after +0.5% in October). It increased notably in *computer programming, consultancy and related activities* (+1.9%), in *programming and broadcasting activities* (+0.7%) and in *information service activities* (+0.7%). On the contrary, the turnover decreased for the third consecutive month in *telecommunications* (-0.3%).

The turnover in *information and communication* increased over the last three months (+0.4%) and year-on-year (+3.6%).

Second month in a row of strong growth in business support activities

In November, the turnover of *business support activities* increased again significantly (+1.3% after +1.2%). Within *professional, scientific and technical activities* (+1.2%), the rise was mainly driven up by *legal and accounting activities* (+2.7%), *architectural and engineering activities* (+1.6%) and to a lesser extent by *activities of head offices* (+0.6%). The turnover grew also in *administrative and support service activities* (+1.4%): in particular it rebounded significantly in *employment activities* (+6.8% after -0.8%) and recovered in *services to buildings and landscape activities* (+1.4% after -0.9%).

The turnover in *business support activities* was stable over the last three months and went up over the year (+1.5%).

• Revisions

The variation of turnover for October 2015 has been lowered by 0.3 points in the *wholesale trade, except of motor vehicles* and by 0.1 points in *real estate activities*. That same month, the variation has been revised upwards by +0.3 points in *business support activities*, by 0.2 points in *transportation and storage* and by 0.1 points in *information and communication*.

Variation of the turnover in the wholesale trade and business services


SA-WDA value, Base year 2010

Nace Classification	Weight	Nov. 2015	Change in %		
			Nov./ Oct.	Oct./ Sept.	q-o-q (1)
46 Wholesale trade, except of motor vehicles and motorcycles	1000	109.0	0.2	-0.8	-1.1
461 Wholesale on a fee or contract basis	152	117.1	0.9	-0.4	-1.0
462 Wholesale of agricultural raw materials and live animals	54	112.3	0.0	-3.9	-6.4
463 Wholesale of food, beverages and tobacco	170	113.8	2.3	-1.7	-1.0
464 Wholesale of household goods	207	107.8	-0.9	0.6	0.1
465 Wholesale of information and communication equipment	61	102.1	-0.4	-1.6	0.3
466 Wholesale of other machinery, equipment and supplies	125	115.7	0.5	0.3	1.0
467 Other specialised wholesale	197	96.2	-1.5	-1.2	-2.4
469 Non specialised wholesale trade	34	113.4	1.4	-0.5	-1.7
H Transportation and storage	1000	109.4	0.8	1.1	0.0
49 Land transport and transport via pipelines	407	110.1	2.8	0.6	-0.7
50 Water transport	73	119.9	-0.3	-4.8	2.1
51 Air transport	91	100.7	-1.8	0.0	-2.9
52 Warehousing and support activities for transportation	360	110.3	-1.2	3.7	1.1
53 Postal and courier activities	69	101.2	4.0	-1.3	-1.1
J Information and communication	1000	107.3	0.6	0.5	0.4
58 Publishing activities	158	107.5	0.2	0.6	0.8
59 Motion picture, video and television programme production...	76	108.4	0.0	2.1	1.5
60 Programming and broadcasting activities	61	105.8	0.7	0.4	-1.5
61 Telecommunications	396	95.3	-0.3	-0.7	-1.3
62 Computer programming, consultancy and related activities	251	124.7	1.9	1.0	2.6
63 Information service activities	58	113.7	0.7	2.4	-0.3
L Real estate activities	1000	105.8	0.2	0.7	1.2
681 Buying and selling of own real estate	96	82.3	-1.6	1.5	2.2
682 Renting and operating of own or leased real estate	691	107.2	0.5	-0.6	-0.3
683 Real estate activities on a fee or contract basis	213	111.7	0.0	4.4	6.0
M+N Business support activities	1000	115.2	1.3	1.2	0.0
M Professional, scientific and technical activities	579	115.8	1.2	1.8	-0.3
69 Legal and accounting activities	90	113.9	2.7	-0.9	2.4
70 Activities of head offices...	219	122.8	0.6	3.1	0.0
71 Architectural and engineering activities...	151	113.1	1.6	2.9	-2.9
72 Scientific research and development	26	106.6	-1.4	-0.6	0.6
73 Advertising and market research	68	105.1	1.4	0.2	0.8
74 Other professional, scientific and technical activities	19	116.6	1.4	0.4	-0.6
75 Veterinary activities	6	116.9	0.3	-0.4	-0.6
N Administrative and support service activities	421	114.3	1.4	0.3	0.5
77 Rental and leasing activities	98	112.1	0.6	0.8	0.1
78 Employment activities	80	117.2	6.8	-0.8	0.3
79 Travel agency, tour operator...	42	107.0	-1.3	0.0	2.3
80 Security and investigation activities	21	116.7	1.8	-1.0	0.0
81 Services to buildings and landscape activities	50	112.5	1.4	-0.9	0.4
82 Office administrative, office support and other business support activities	131	116.8	-0.3	1.2	0.4

(1) Quarter-on-quarter: last three months / previous three months.

Source: INSEE

For further information :

- Complementary data (long series) and metadata (methodology, linked internet pages, etc.) are available on the web page of the index: <http://www.insee.fr/en/themes/info-rapide.asp?id=95>
- Historical data are available on BDM: [G1418](#), [G1421](#), [G1423](#), [G1424](#), [G1426](#).
- Press contact: bureau-de-presse@insee.fr
-  Follow us on Twitter @InseeFr_News: https://twitter.com/InseeFr_News

Next issue: 26 February 2016