

Informations Rapides

29 avril 2016 - n° 117



■ Turnover in industry and construction – February 2016

In February 2016, the turnover levelled off in the manufacturing industry

Warning: Since the publication of the indexes of January, 2016 on March 31st, the turnover index series are produced according to a new process that improves their quality. **The series have been recalculated over the period 1999-2015.** Further information concerning these changes is available on the Web page of this index on [the Web page of this index](#).

In February 2016, the turnover levelled off in the **manufacturing industry** after two months in a row of decline (–0.5% in January and –1.9% in December).

On the contrary, the turnover took off in the **industry as a whole** (+0.7%, after –0.7% in January) owed to a rebound in the *mining and quarrying; energy; water supply; waste management* (+3.7%, after –1.8%).

Fall over the last three months (–0.7%)

Over the last three months, the turnover went down in the *manufacturing industry* (–0.7%) as well as in the *industry as a whole* (–1.0%). It dropped in the *manufacture of transport equipment* (–1.8%), in the *manufacture of coke and refined petroleum products* (–4.6%) and, more moderately, in *other manufacturing* (–0.4%). Conversely, it rose in the *electrical and electronic equipment and machine equipment* (+0.6%). It remained stable in the *manufacture of food products and beverages*.

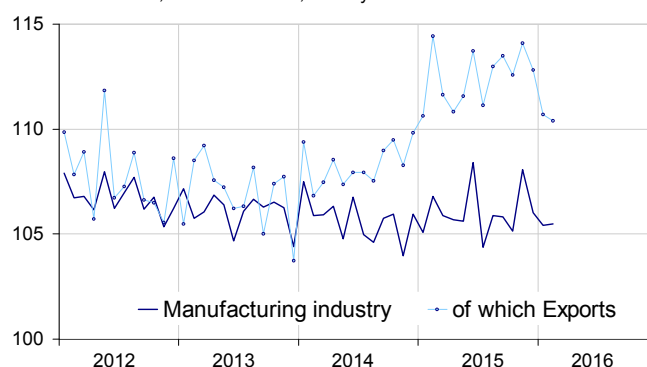
Slight fall over the last year (–0.3%)

In the *manufacturing industry* as well as in the *industry as a whole*, the turnover declined slightly over the last three months, compared to the same three months of the previous year (–0.3%, y-o-y).

Over this period, the turnover plummeted in the *manufacture of coke and refined petroleum products* (–20.2%) owed to a fall in producer prices. On the contrary, it went up in the *manufacture of transport equipment* (+2.6%), in the *electrical and electronic equipment and machine equipment* (+1.0%), in the *manufacture of food products and beverages* (+0.8%). It also grew, but more slightly, in *other manufacturing* (+0.2%).

Turnover in manufacturing industry

Turnover indexes, SA-WDA value, Base year 2010



Source: INSEE

Variation of the turnover in industry and construction

SA-WDA value, Base year 2010

| NA : A 10, (A 17) | Weight** | Change in % | | | |
|--|--------------|---------------|---------------|--------------|--------------|
| | | Feb./ Jan. | Jan./ Dec. | q-o-q (1) | y-o-y (2) |
| BE: INDUSTRY | 10000 | 0.7 | –0.8 | –1.0 | –0.3 |
| CZ: MANUFACTURING INDUSTRY | 8346 | 0.0 | –0.6 | –0.7 | –0.3 |
| Of which Exports | 2677 | –0.3 | –1.9 | –1.9 | –0.3 |
| (C1): Manufacture of food products and beverages | 1685 | 1.0 | –0.1 | 0.0 | 0.8 |
| (C2): Manufacture of coke and refined petroleum products | 561 | –6.3 | –7.9 | –4.6 | –20.2 |
| (C3): Electrical and electronic equipment; machine equipment | 953 | –0.6 | 1.5 | 0.6 | 1.0 |
| (C4): Manufacture of transport equipment | 1265 | 1.3 | –1.5 | –1.8 | 2.6 |
| (C5): Other manufacturing | 3881 | –0.1 | –0.2 | –0.4 | 0.2 |
| DE: Mining and quarrying; energy; water supply; waste management | 1654 | 3.7 | –1.8 | –2.6 | –0.6 |
| FZ: CONSTRUCTION | 10000 | 1.3 | –0.3 | 0.2 | 0.1 |

** 10000=B...E and F

(1) Quarter-on-quarter: last three months / previous three months

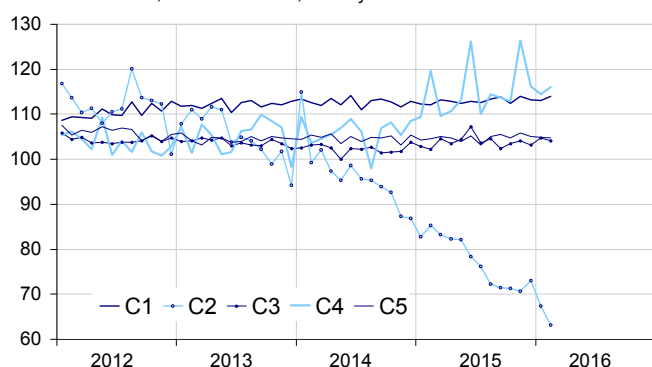
(2) Year-on-year : last three months / same three months of previous year

The codes correspond to different levels of aggregation of the NACE classification.

Source: INSEE

Turnover in manufacturing industry by sector

Turnover indexes, SA-WDA value, Base year 2010



Source: INSEE

Rebound in transport equipment (+1.3%)

The turnover in the *manufacture of transport equipment* recovered in February (+1.3%, after -1.5% in January). The rebound is due to the *manufacture of motor vehicles, trailers and semi-trailers* (+5.2%, after -3.7%), while the turnover fell back in the *manufacture of other transport equipment* (-2.0%, after +0.5%).

Rise in food products and beverages (+1.0%)

The turnover rose in February in the *manufacture of food products and beverages* (+1.0%) after a virtual stability in January (-0.1%).

New sharp fall in coke and refined petroleum products (-6.3%)

In February, the turnover went on declining dramatically in the *manufacture of coke and refined petroleum products* (-6.3%, after -7.9% in January).

Decrease in equipments (-0.6%)

The turnover in the *electrical and electronic equipment and machine equipment* turned down in February (-0.6%, after +1.5%). The fall concerned mainly the *manufacture of computer, electronic and optical products* (-1.7%). The turnover remained virtually stable in the *manufacture of machinery and equipment n.e.c.* (-0.1%) and stabilised in the *manufacture of electrical equipment*.

Virtual stability in other manufacturing (-0.1%)

The turnover in *other manufacturing* levelled off in February (-0.1% after -0.2%). It dropped in the *manufacture of chemicals and chemical products* (-1.2%) and in the *manufacture of basic metals and fabricated metal products* (-0.8%), while it grew in *other manufacturing: repair and installation* (+1.1%) and in the *manufacture of basic pharmaceutical products and pharmaceutical preparations* (+1.2%).

• Revisions: +0.6 points in January in the manufacturing industry

In the *manufacturing industry*, the evolution of the turnover in January was revised upwards, at -0.5% instead of -1.1% published previously. It was revised by +0.4 points in the *industry as a whole* (-0.7%, instead of -1.1%).

Indexes of turnover in industry and construction

SA-WDA, based year 2010

| Industries: | Weight* | Feb. 2016 | Change in % | | |
|---|--------------|--------------|-------------|-------------|-------------|
| | | | Feb./ Jan. | Jan./ Dec. | q-o-q (1) |
| BE: INDUSTRY | 10000 | 106.9 | 0.7 | -0.8 | -1.0 |
| CZ: MANUFACTURING INDUSTRY | 8346 | 105.5 | 0.0 | -0.6 | -0.7 |
| of which Exports | 2677 | 110.4 | -0.3 | -1.9 | -1.9 |
| (C1): Man. of food products and beverages | 1685 | 114.1 | 1.0 | -0.1 | 0.0 |
| of which Exports | 285 | 118.3 | 1.5 | 1.3 | 0.2 |
| (C2): Man. of coke and refined petroleum products | 561 | 63.1 | -6.3 | -7.9 | -4.6 |
| (C3): Electrical and electronic equipment; machine equipment | 953 | 104.1 | -0.6 | 1.5 | 0.6 |
| of which Exports | 469 | 102.1 | -1.0 | 1.5 | -0.2 |
| [CI] Man. of computer, electronic and optical products | 306 | 100.3 | -1.7 | 2.0 | 0.3 |
| [CJ] Man. of electrical equipment | 245 | 98.0 | 0.0 | 0.1 | -0.9 |
| [CK] Man. of machinery and equipment n.e.c. | 402 | 110.7 | -0.1 | 2.0 | 1.7 |
| (C4): Man. of transport equipment | 1265 | 116.0 | 1.3 | -1.5 | -1.8 |
| of which Exports | 617 | 122.4 | -0.1 | -5.5 | -2.0 |
| [CL1] Man. of motor vehicles, trailers and semi-trailers | 702 | 100.3 | 5.2 | -3.7 | -3.1 |
| [CL2] Man. of other transport equipment | 562 | 135.5 | -2.0 | 0.5 | -0.7 |
| (C5): Other manufacturing of which Exports | 3881 | 104.8 | -0.1 | -0.2 | -0.4 |
| [CB] Man. of textiles, wearing apparel, leather and related products | 188 | 108.1 | -0.1 | -0.9 | 0.0 |
| [CC] Man. of wood and paper products; printing and reproduction of recorded media | 436 | 97.6 | -0.2 | -0.4 | -0.1 |
| [CE] Man. of chemicals and chemical products | 745 | 100.3 | -1.2 | -1.5 | 0.0 |
| [CF] Man. of basic pharmaceutical products and pharmaceutical preparations | 304 | 108.9 | 1.2 | -4.7 | 0.9 |
| [CG] Man. of rubber and plastics products, and other non-metallic mineral products | 629 | 102.9 | 0.4 | -1.5 | -0.6 |
| [CH] Man. of basic metals and fabricated metal products, except machinery and equipment | 926 | 101.6 | -0.8 | 2.4 | -1.6 |
| [CM] Other manufacturing; repair and installation of machinery and equipment | 653 | 118.1 | 1.1 | 1.2 | -0.1 |
| DE: Mining and quarrying; energy, water supply, sewerage, waste management | 1654 | 114.1 | 3.7 | -1.8 | -2.6 |
| [BZ] Mining and quarrying | 70 | 91.8 | -3.2 | 0.4 | 1.8 |
| [DZ] Electricity, gas, steam and air-conditioning supply | 1205 | 115.8 | 3.8 | -1.6 | -3.6 |
| [EZ] Water supply; sewerage, waste management and remediation | 379 | 112.5 | 4.5 | -2.8 | 0.1 |
| FZ: CONSTRUCTION | 10000 | 104.7 | 1.3 | -0.3 | 0.2 |

* 10000=B...E and F

(1) Quarter-on-quarter: last three months / previous three months

Source: INSEE

Measure of variations' revisions

| | Jan./ Dec. | Dec./ Nov. | Nov./ Oct. | Q4 2015/ Q3 2015 | 2015/ 2014 |
|------------------------------------|-------------|--------------|-------------|------------------|--------------|
| Industry (BE) | 0.36 | -0.48 | 0.12 | -0.25 | -0.09 |
| raw serie | -0.46 | -0.03 | -0.01 | 0.10 | -0.11 |
| SA-WDA coeff. | 0.83 | -0.45 | 0.14 | -0.35 | 0.02 |
| Manufacturing industry (CZ) | 0.57 | -0.27 | 0.20 | -0.06 | -0.04 |
| raw serie | 0.13 | -0.04 | -0.02 | 0.09 | -0.04 |
| SA-WDA coeff. | 0.44 | -0.23 | 0.22 | -0.15 | 0.01 |

How to read it: in the manufacturing industry, the SA-WDA evolution between December 2015 and January 2016 is revised by +0.57 points: +0.13 points are due to the raw serie's revision and +0.44 points to the new calculation of the SA-WDA.

Source : INSEE

For further information:

- Complementary data (long series) and metadata (methodology, linked internet pages, etc.) are available on the web page of this index: <http://www.insee.fr/en/themes/info-rapide.asp?id=53>
- Historical data are available on the BDM: [G1781](#), [G1782](#), [G1783](#), [G1784](#), [G1785](#), [G1786](#) and [G1787](#)
- Press contact: bureau-de-presse@insee.fr
- Follow us on Twitter @InseeFr_News: https://twitter.com/InseeFr_News

Next issue: 31 May 2016