

# Informations Rapides

31 mars 2016 - n° 87



## ■ Turnover in industry and construction – January 2016

### In January 2016, the turnover declined again in the manufacturing industry (–1.1%)

**Warning:** from this release, the turnover index series are produced according to a new methodology that improves their quality. The series have been recalculated over the period 1999-2015. Further information concerning these changes is available on [the Web page of this index](#).

In January 2016, the turnover fell again in the **manufacturing industry** (–1.1%, after –1.6% in December). Exports declined more sharply (–2.6%, after –0.7%).

In the **industry as a whole**, the turnover continued to decrease as well (–1.1%, after –1.5%).

#### Rise over the last three months (+0.7%)

Over the last three months, the turnover went up in the **manufacturing industry** (+0.7%). The growth was mainly driven by the *manufacture of transport equipment* (+4.5%), even the turnover rose also in *other manufacturing* (+0.3%). Conversely, it dropped sharply in the *manufacture of coke and refined petroleum products* (–4.1%). It remained virtually stable in the *manufacture of food products and beverages* (+0.1%) and in the *electrical and electronic equipment, and machine equipment* (–0.1%).

In the **industry as a whole** (+0.2%), the turnover barely rose, curtailed by a fall in the *mining and quarrying; energy; water supply* (–2.0%).

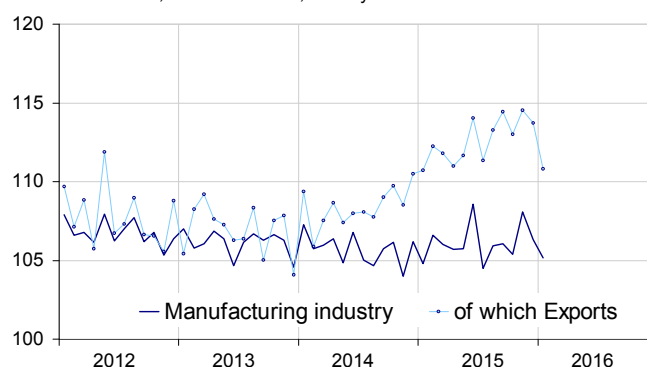
#### Increase over the last year (+1.4%)

In the **manufacturing industry**, the turnover went up substantially over the last three months, compared to the same three months of previous year (+1.4%, y-o-y). It climbed at virtually the same pace in the **industry as a whole** (+1.6%).

Over this period, the turnover improved considerably in the *manufacture of transport equipment* (+10.4%), and more moderately in *other manufacturing* (+1.1%), in the *manufacture of food products and beverages* (+0.9%) and in the *electrical and electronic equipment; machine equipment* (+0.9%). However, it slumped in the *manufacture of coke and refined petroleum products* (–17.9%) with the dramatic fall in producer prices.

#### Turnover in manufacturing industry

Turnover indexes, SA-WDA value, Base year 2010



Source: INSEE

#### Variation of the turnover in industry and construction

SA-WDA value, Base year 2010

NA: A 10, (A 17)	Weight**	Change in %			
		Jan./ Dec.	Dec./ Nov.	q-o-q (1)	y-o-y (2)
<b>BE: INDUSTRY</b>	<b>10000</b>	<b>–1.1</b>	<b>–1.5</b>	<b>0.2</b>	<b>1.6</b>
<b>CZ: MANUFACTURING INDUSTRY</b>	<b>8346</b>	<b>–1.1</b>	<b>–1.6</b>	<b>0.7</b>	<b>1.4</b>
<i>Of which Exports</i>	<i>2677</i>	<i>–2.6</i>	<i>–0.7</i>	<i>–0.5</i>	<i>2.8</i>
(C1): Manufacture of food products and beverages	1685	–0.2	–0.8	0.1	0.9
(C2): Manufacture of coke and refined petroleum products	561	–16.8	2.8	–4.1	–17.9
(C3): Electrical and electronic equipment; machine equipment	953	0.5	–0.7	–0.1	0.9
(C4): Manufacture of transport equipment	1265	–1.6	–6.9	4.5	10.4
(C5): Other manufacturing	3881	–0.1	–0.6	0.3	1.1
<b>DE: Mining and quarrying; energy; water supply; waste management</b>	<b>1654</b>	<b>–1.2</b>	<b>–1.0</b>	<b>–2.0</b>	<b>2.5</b>
<b>FZ: CONSTRUCTION</b>	<b>10000</b>	<b>–0.3</b>	<b>–1.2</b>	<b>0.1</b>	<b>–0.3</b>

\*\* 10000=B...E and F

(1) Quarter-on-quarter: last three months / previous three months

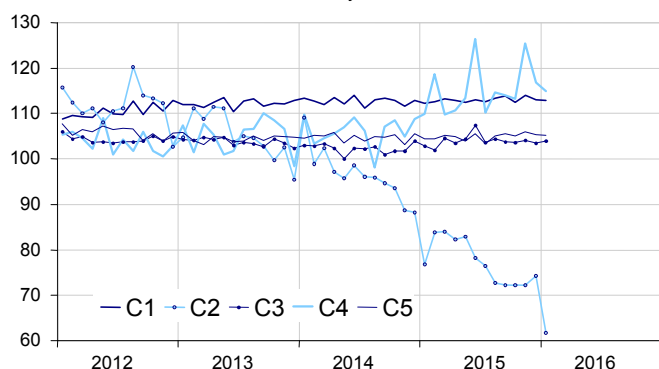
(2) Year-on-year: last three months / same three months of previous year

The codes correspond to different levels of aggregation of the NACE classification.

Source: INSEE

## Turnover in manufacturing industry by sector

Turnover indexes, SA-WDA value, Base year 2010



Source: INSEE

### Crash in refined petroleum products (-16.8%)

In January 2016, the turnover in the *manufacture of coke and refined petroleum products* plummeted (-16.8%), after a rise in December 2015 (+2.8%).

### Drop in transport equipments (-1.6%)

The turnover fell again in January in the *manufacture of transport equipment* (-1.6%), but less than in December (-6.9%). It went down sharply in the *manufacture of motor vehicles, trailers and semi-trailers* (-3.8%, as in December), while it picked up slightly in the *manufacture of other transport equipments* (+0.4%, after -9.5%).

### Slight rebound in electrical and electronic equipments (+0.5%)

In January, the turnover bounced back in the *electrical and electronic equipment, and machine equipment* (+0.5%, after -0.7%): it rebounded in the *manufacture of computer, electronic and optical products* (+2.1%, after -1.2%) and in the *manufacture of machinery and equipment n.e.c.* (+0.9%, after -0.1%), but it dropped again in the *manufacture of electrical equipment* (-2.4%, after -1.1%).

### Very slight decrease in food products and beverages (-0.2%)

In January, the turnover fell a little further in the *manufacture of food products and beverages* (-0.2%, after -0.8% in December).

### Very slight fall in other manufacturing (-0.2%)

The turnover in *other manufacturing* declined very slightly in January (-0.2%, after -0.6%). It dropped in the *manufacture of basic pharmaceutical products and pharmaceutical preparations* (-5.1%) and more moderately in the *manufacture of rubber and plastic products* (-1.5%). Conversely, it grew mainly in the *manufacture of basic metals and fabricated metal products* (+2.4%) and in *other manufacturing* (+1.1%).

### • Revisions: all series recalculated according to a new methodology

In the *manufacturing industry* as in the *industry* as a whole, the revisions are larger than usual, due to the change of methodology (see the Warning).

## Indexes of turnover in industry and construction

SA-WDA, based year 2010

Industries:	Weight*	Jan. 2016	Change in %		
			Jan./ Dec.	Dec./ Nov.	q-o-q (1)
<b>BE: INDUSTRY</b>	<b>10000</b>	<b>106.4</b>	<b>-1.1</b>	<b>-1.5</b>	<b>0.2</b>
<b>CZ: MANUFACTURING INDUSTRY</b>	<b>8346</b>	<b>105.2</b>	<b>-1.1</b>	<b>-1.6</b>	<b>0.7</b>
of which Exports	2677	110.8	-2.6	-0.7	-0.5
(C1): Man. of food products and beverages	1685	112.9	-0.2	-0.8	0.1
of which Exports	285	115.6	0.8	-2.5	0.6
(C2): Man. of coke and refined petroleum products	561	61.8	16.8	2.8	-4.1
(C3): Electrical and electronic equipment; machine equipment	953	103.9	0.5	-0.7	-0.1
of which Exports	469	102.5	0.3	-0.5	-1.9
[CI] Man. of computer, electronic and optical products	306	102.4	2.1	-1.2	0.8
[CJ] Man. of electrical equipment	245	95.4	-2.4	-1.1	-1.5
[CK] Man. of machinery and equipment n.e.c.	402	110.2	0.9	-0.1	0.0
(C4): Man. of transport equipment	1265	114.9	-1.6	-6.9	4.5
of which Exports	617	123.7	-6.3	-1.2	1.9
[CL1] Man. of motor vehicles, trailers and semi-trailers	702	95.5	-3.8	-3.8	0.0
[CL2] Man. of other transport equipment	562	139.1	0.4	-9.5	8.6
(C5): Other manufacturing	3881	105.2	-0.2	-0.6	0.3
of which Exports	1237	109.0	-0.6	-1.0	-1.6
[CB] Man. of textiles, wearing apparel, leather and related products	188	108.4	-1.1	-0.5	1.2
[CC] Man. of wood and paper products; printing and reproduction of recorded media	436	97.9	-0.3	-1.2	1.5
[CE] Man. of chemicals and chemical products	745	102.2	-1.1	3.2	-0.8
[CF] Man. of basic pharmaceutical products and pharmaceutical preparations	304	107.2	-5.1	3.5	-0.1
[CG] Man. of rubber and plastics products, and other non-metallic mineral products	629	102.8	-1.5	-1.8	1.7
[CH] Man. of basic metals and fabricated metal products, except machinery and equipment	926	102.7	2.4	-3.3	-0.3
[CM] Other manufacturing; repair and installation of machinery and equipment	653	117.6	1.1	-1.4	0.4
<b>DE: Mining and quarrying; energy, water supply, sewerage, waste management</b>	<b>1654</b>	<b>112.8</b>	<b>-1.2</b>	<b>-1.0</b>	<b>-2.0</b>
[BZ] Mining and quarrying	70	95.2	0.5	0.9	3.7
[DZ] Electricity, gas, steam and air-conditioning supply	1205	115.6	-0.7	-1.1	-2.6
[EZ] Water supply; sewerage, waste management and remediation	379	107.0	-3.0	-1.0	-0.7
<b>FZ: CONSTRUCTION</b>	<b>10000</b>	<b>102.9</b>	<b>-0.3</b>	<b>-1.2</b>	<b>0.1</b>

\* 10000=B...E and F

(1) Quarter-on-quarter: last three months / previous three months

Source: INSEE

### Measure of variations' revisions

(in percentage points)

	Dec./ Nov.	Nov./ Oct.	Oct./ Sep.	Q4 2015/ Q3 2015	2015/ 2014
<b>Industry (BE)</b>	<b>-0.53</b>	<b>-1.08</b>	<b>0.43</b>	<b>0.95</b>	<b>0.53</b>
raw serie	2.78	3.25	-1.52	3.64	0.16
SA-WDA coeff.	-3.31	-2.17	1.95	-2.69	0.37
<b>Manufacturing industry (CZ)</b>	<b>-0.54</b>	<b>1.29</b>	<b>0.36</b>	<b>1.45</b>	<b>0.27</b>
raw serie	3.69	3.50	-1.75	4.77	-0.16
SA-WDA coeff.	-4.22	-2.21	2.11	-3.32	0.43

How to read it: in the manufacturing industry, the SA-WDA variation between November and December 2015 has been revised by -0.54 points: +3.69 points are due to the raw serie's revision and -4.22 points to the new calculation of the SA-WDA.

Source: INSEE

### For further information:

- Complementary data (long series) and metadata (methodology, linked internet pages, etc.) are available on the web page of this index: <http://www.insee.fr/en/themes/info-rapide.asp?id=53>
- Historical data are available on the BDM: [G1781](#), [G1782](#), [G1783](#), [G1784](#), [G1785](#), [G1786](#) and [G1787](#)
- Press contact: [bureau-de-presse@insee.fr](mailto:bureau-de-presse@insee.fr)
- Follow us on Twitter @InseeFr\_News: [https://twitter.com/InseeFr\\_News](https://twitter.com/InseeFr_News)

Next issue: April 29<sup>th</sup>, 2016