

■ Turnover in the wholesale trade and business services - February 2016

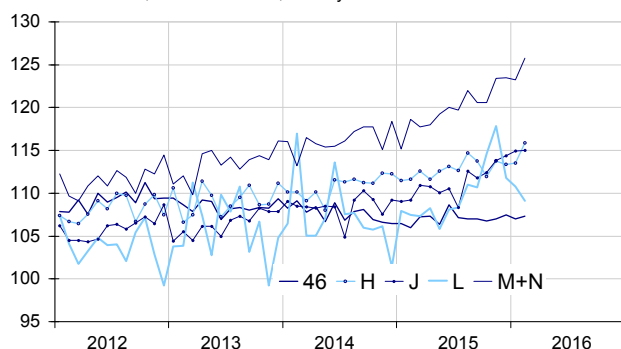
In February 2016, the turnover improved in transportation, and in business support activities services

Warning: Since the publication of the indexes of January, 2016 on March 31st, the turnover index series are produced according to a new process that improves their quality. **The series have been recalculated over the period 1999-2015.** Further information concerning these changes is available on [the Web page of this index](#).

In February 2016, the turnover expanded sharply in *transportation and storage* (+2.1%) as in *business support activities* (+2.1%). It also increased, although to a lesser extent in the *wholesale trade, except for motor vehicles and motorcycles* (+0.3%). It was virtually stable in *information and communication* (+0.1%). By contrast, it decreased in *real estate activities* (-1.5%).

Wholesale trade and business services

Turnover indices, SA-WDA value, Base year 2010



Source: INSEE

Slight rise in the wholesale trade, except of motor vehicles and motorcycles

In February 2016, the turnover of the *wholesale trade, except of motor vehicles and motorcycles* recovered modestly (+0.3% after -0.4% in January). It rose again for wholesalers of *food, beverages and tobacco* (+1.8%), and of *other machinery, equipment and supplies* (+1.6%). Conversely it declined again in the wholesale of *other specialised wholesale* (-1.3%) and in the *wholesale of information and communication equipment* (-1.3%).

The turnover of the *wholesale trade, except of motor vehicles and motorcycles* increased over the last three

months (+0.3%) and over the year (+0.9%).

Further decline in real estate activities

The turnover of *real estate activities* decreased again (-1.5 after -0.9% in January). It dropped considerably over the last three months (-3.3%) but rose sharply over the year (+4.7%).

Sharp rise in transportation and storage

In February, the turnover of *transportation and storage* surged (+2.1%) after remaining almost stable in January (+0.1%). This increase was driven particularly by *land transport* (+2.3%), *warehousing and support activities for transportation* (+2.0%), and by *water transport* (+4.0%).

The turnover of *transportation and storage* increased over the last three months (+1.0%) and over the year (+2.2%).

Variation of the turnover in the wholesale trade and business services

SA-WDA value, Base year 2010

Nace classification	Weight	Change in %			
		Feb./J an.	Jan./D ec.	q-o-q (1)	y-o-y (2)
46 Wholesale trade, except of motor vehicles and motorcycles	1000	0.3	-0.4	0.3	0.9
H Transportation and storage	1000	2.1	0.1	1.0	2.2
J Information and communication	1000	0.1	0.5	1.8	5.1
L Real estate activities	1000	-1.5	-0.9	-3.3	4.7
M+N Business support activities	1000	2.1	-0.2	2.2	5.8
M Professional, scientific and technical activities	585	1.3	0.4	2.5	6.3
N Administrative and support service activities	415	3.1	-1.0	1.7	5.0

(1) Quarter-on-quarter: last three months / previous three months

(2) Year-on-year: last three months / same three months of previous year

The codes correspond to different levels of aggregation of the NACE classification.

Source: INSEE

Virtual stability in information and communication

The turnover in *information and communication* was almost unchanged in February (+0.1%) after four months in a row of increase. It fell back strongly in *programming and broadcasting activities* (-5.8% after +7.2%) whereas it rose to a lesser extent in *computer programming, consultancy and related activities* (+1.0%) and it recovered in *motion picture, video and television programme production* (+2.9% after -2.2%). The turnover in *information and communication* increased sharply over the last three months (+1.8%) and year-on-year (+5.1%).

Rebound in business support activities

In February, the turnover of *business support activities* recovered significantly (+2.1% after -0.2% in January)

The rebound was mostly due to *administrative and support service activities* (+ 3.1% after -1.0%). All sub-sectors increased. In particular the turnover rose sharply in *rental and leasing activities* (+3.6%) and in *employment activities* (+3.9%).

The turnover also rose in *professional, scientific and technical activities and accounting activities* (+1.3%) especially in *legal and accounting activities* (+3.0%) and in *architectural and engineering activities* (+1.9%).

The turnover in *business support activities* went up over the last three months (+2.2%) and over the year (+5.8%).

• Revisions:

The variation of turnover for January 2016 has been revised upwards by +0.5 points in *real estate activities* and by 0.2 points in *business support activities*. It has been lowered by 0.2 points in *transportation and storage* and by 0.1 points in *the wholesale trade, except of motor vehicles*. It remained unchanged in *information and communication*.

Variation of the turnover in the wholesale trade and business services


SA-WDA value, Base year 2010

Nace Classification	Weight	Feb. 2016	Change in %		
			Feb./ Jan.	Jan./ Dec.	q-o-q (1)
46 Wholesale trade, except of motor vehicles and motorcycles	1000	107.3	0.3	-0.4	0.3
461 Wholesale on a fee or contract basis	151	115.0	0.4	-1.8	-1.4
462 Wholesale of agricultural raw materials and live animals	55	112.2	0.8	-2.1	-0.6
463 Wholesale of food, beverages and tobacco	173	113.7	1.8	0.4	0.6
464 Wholesale of household goods	208	106.2	-0.6	0.1	1.7
465 Wholesale of information and communication equipment	61	100.1	-1.3	-1.3	0.8
466 Wholesale of other machinery, equipment and supplies	126	114.6	1.6	0.9	1.5
467 Other specialised wholesale	198	90.0	-1.3	-0.7	-1.1
469 Non specialised wholesale trade	28	130.0	1.1	0.0	1.3
H Transportation and storage	1000	115.9	2.1	0.1	1.0
49 Land transport and transport via pipelines	410	118.5	2.3	0.9	1.2
50 Water transport	69	134.4	4.0	-5.1	-1.5
51 Air transport	89	101.0	0.8	3.3	-2.1
52 Warehousing and support activities for transportation	366	116.8	2.0	0.0	2.1
53 Postal and courier activities	66	95.1	0.3	-2.1	0.1
J Information and communication	1000	115.0	0.1	0.5	1.8
58 Publishing activities	153	105.7	-0.8	2.5	0.1
59 Motion picture, video and television programme production...	73	110.6	2.9	-2.2	-0.6
60 Programming and broadcasting activities	60	108.6	-5.8	7.2	1.5
61 Telecommunications	399	108.7	-0.2	-0.6	2.5
62 Computer programming, consultancy and related activities	261	129.5	1.0	0.6	2.3
63 Information service activities	54	131.4	2.5	-1.0	3.2
L Real estate activities	1000	109.1	-1.5	-0.9	-3.3
681 Buying and selling of own real estate	82	120.9	0.7	4.7	-4.0
682 Renting and operating of own or leased real estate	734	106.3	-2.6	-2.6	-3.7
683 Real estate activities on a fee or contract basis	184	115.0	1.4	3.5	-1.5
M+N Business support activities	1000	125.8	2.1	-0.2	2.2
M Professional, scientific and technical activities	585	123.7	1.3	0.4	2.5
69 Legal and accounting activities	90	120.0	3.0	-0.9	1.6
70 Activities of head offices...	241	127.5	-0.3	2.1	3.3
71 Architectural and engineering activities...	142	122.1	1.9	-0.4	3.1
72 Scientific research and development	24	105.5	-1.5	-3.8	-3.0
73 Advertising and market research	63	109.9	3.5	-4.0	1.7
74 Other professional, scientific and technical activities	19	170.9	6.5	5.8	1.7
75 Veterinary activities	6	128.9	1.4	-0.1	2.3
N Administrative and support service activities	415	128.7	3.1	-1.0	1.7
77 Rental and leasing activities	120	123.7	3.6	0.4	1.4
78 Employment activities	74	133.3	3.9	0.0	1.6
79 Travel agency, tour operator...	35	120.8	1.6	-0.4	-1.9
80 Security and investigation activities	20	135.0	5.9	0.5	2.0
81 Services to buildings and landscape activities	48	124.2	2.0	-0.2	1.3
82 Office administrative, office support and other business support activities	118	133.9	2.5	-3.5	3.2

(1) Quarter-on-quarter: last three months / previous three months.

Source: INSEE

For further information :

- Complementary data (long series) and metadata (methodology, linked internet pages, etc.) are available on the web page of the index: <http://www.insee.fr/en/themes/info-rapide.asp?id=95>
- Historical data are available on BDM: [G1795](#), [G1797](#), [G1798](#), [G1800](#), [G1801](#).
- Press contact: bureau-de-presse@insee.fr
-  Follow us on Twitter @InseeFr_News: https://twitter.com/InseeFr_News

Next issue: 31 May 2016