

Informations *Rapides*

31 mars 2016 - n° 88



■ Turnover in the wholesale trade and business services - January 2016

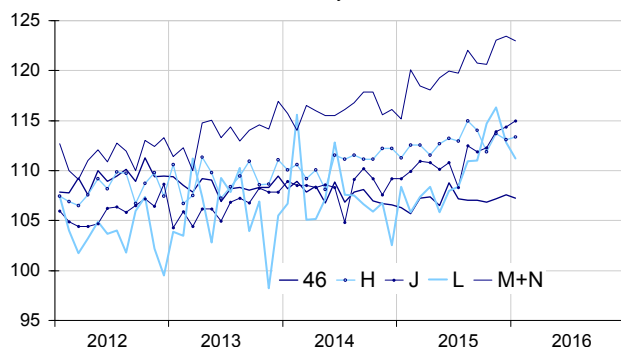
In January 2016, the turnover declined in the wholesale, in business support activities services and in real estate

Warning: From this release, the turnover index series are produced according to a new process that improves their quality. **The series have been recalculated over the period 1999-2015.** Further information concerning these changes is available on [the Web page of this index](#).

In January 2016, the turnover decreased in the *wholesale trade, except for motor vehicles and motorcycles* (−0.3%), in *business support activities* (−0.4%), and in *real estate activities* (−1.4%). By contrast, It rose in *information and communication* (+0.5%) and in *transportation and storage* (+0.3%).

Wholesale trade and business services

Turnover indices, SA-WDA value, Base year 2010



Source: INSEE

Slight downturn in the wholesale trade, except of motor vehicles and motorcycles

In January 2016, the turnover of the *wholesale trade, except of motor vehicles and motorcycles* fell back modestly (−0.3% après +0.4%). It decreased in particular for wholesalers of *on a fee or contract basis* (−1.6%), of *other specialised wholesale* (−0.9%) and those of *information and communication equipment* (−1.4%). However it rose in *wholesale of other machinery, equipment and supplies* (+0.8%) and in the *wholesale of agricultural raw materials and live animals* (+1.4%).

The turnover of the *wholesale trade, except of motor vehicles and motorcycles* increased over the last three months (+0.3%) and over the year (+0.7%).

Further decline in real estate activities

The turnover of *real estate activities* decreased again (−1.4% after −3.0% in December). It rose over the last three months (+1.1%) and over the year (+7.1%).

Slight rise in transportation and storage

In January, the turnover of *transportation and storage* rebounded slightly (+0.3% after −0.5%), driven by *land transport* (+1.6%) and *air transport* (+3.2%). By contrast, it declined particularly in *water transport* (−5.3%).

The turnover of *transportation and storage* declined slightly over the last three months (−0.2%) but increased over the year (+1.3%).

Variation of the turnover in the wholesale trade and business services

SA-WDA value, Base year 2010

Nace classification	Weight	Change in %			
		Jan./D ec.	Dec./ Nov.	q-o-q (1)	y-o-y (2)
46 Wholesale trade, except of motor vehicles and motorcycles	1000	−0.3	0.4	0.3	0.7
H Transportation and storage	1000	0.3	−0.5	−0.2	1.3
J Information and communication	1000	0.5	0.4	1.9	5.3
L Real estate activities	1000	−1.4	−3.0	1.1	7.1
M+N Business support activities	1000	−0.4	0.3	1.6	6.5
<i>M Professional, scientific and technical activities</i>	585	0.1	0.7	1.9	8.0
<i>N Administrative and support service activities</i>	415	−1.0	−0.2	1.3	4.6

(1) Quarter-on-quarter: last three months / previous three months

(2) Year-on-year: last three months / same three months of previous year

The codes correspond to different levels of aggregation of the NACE classification.

Source: INSEE

Four-month-in-a-row growth in information and communication

The turnover in *information and communication* expanded again in January (+0.5% after +0.7% on average over the previous three months). The rise in January was driven up by the strong rebound of *programming and broadcasting activities* (+7.4% after -0.9%) and to a lesser extent by *publishing activities* (+2.3% after -2.0%). On the contrary, the turnover decreased in *telecommunications* (-0.5%) and in *motion picture, video and television programme production* (-1.8%). The turnover in *information and communication* increased sharply over the last three months (+1.9%) and year-on-year (+5.3%).

Downturn in business support activities

In January, the turnover of *business support activities* dropped (-0.4%) after two months of increase (+0.3% in December and +2.0% in November). The decline affected *administrative and support service activities* (-1.0%) especially *office administrative, office support and other business support activities* (-2.8%).

The turnover was virtually stable in professional, scientific and technical activities and accounting activities (+0.1%). It rose in *activities of head offices* (+1.1%) and in *other professional, scientific and technical activities* (+6.5%). On the contrary, it inched down in all other sub-sectors, in particular in *advertising and market research* (-3.9%).

The turnover in *business support activities* went up over the last three months (+1.6 %) and over the year (+6.5%).

- **Revisions: all series recalculated according to the new methodology**

The revisions are more important than usual. They are due to the changes in the methodology (see *warning*). Thus, for the month of December 2015, the variation has been revised upwards by 0.7 points in *transportation and storage*, by 0.6 points in *business support activities* and by 0.3 points in the *wholesale trade, except of motor vehicles*. The variation has been lowered by 3;4 points in *real estate activities* and 0.7 points in *information and communication*.

Variation of the turnover in the wholesale trade and business services


SA-WDA value, Base year 2010

Nace Classification	Weight	Jan. 2016	Change in %		
			Jan./ Dec.	Dec./ Nov.	q-o-q (1)
46 Wholesale trade, except of motor vehicles and motorcycles	1000	107.3	-0.3	0.4	0.3
461 Wholesale on a fee or contract basis	151	115.0	-1.6	-0.3	-0.6
462 Wholesale of agricultural raw materials and live animals	55	116.7	1.4	-0.1	0.8
463 Wholesale of food, beverages and tobacco	173	111.2	0.3	-1.2	0.3
464 Wholesale of household goods	208	106.7	-0.1	2.2	1.1
465 Wholesale of information and communication equipment	61	101.4	-1.4	0.5	2.1
466 Wholesale of other machinery, equipment and supplies	126	112.6	0.8	-0.1	1.5
467 Other specialised wholesale	198	91.1	-0.9	1.0	-1.7
469 Non specialised wholesale trade	28	128.6	0.1	0.2	1.6
H Transportation and storage	1000	113.4	0.3	-0.5	-0.2
49 Land transport and transport via pipelines	410	116.3	1.6	-2.3	0.9
50 Water transport	69	128.6	-5.3	0.9	-5.7
51 Air transport	89	99.9	3.2	-0.9	-4.7
52 Warehousing and support activities for transportation	366	113.9	-0.2	1.1	0.7
53 Postal and courier activities	66	94.9	-2.3	0.6	0.8
J Information and communication	1000	115.0	0.5	0.4	1.9
58 Publishing activities	153	106.7	2.3	-2.0	1.0
59 Motion picture, video and television programme production...	73	107.9	-1.8	0.5	-0.5
60 Programming and broadcasting activities	60	115.7	7.4	-0.9	0.8
61 Telecommunications	399	108.9	-0.5	2.1	2.5
62 Computer programming, consultancy and related activities	261	127.7	0.3	-0.4	2.5
63 Information service activities	54	130.0	0.3	0.8	1.9
L Real estate activities	1000	111.2	-1.4	-3.0	1.1
681 Buying and selling of own real estate	82	119.7	4.2	-3.4	-4.4
682 Renting and operating of own or leased real estate	734	109.9	-3.3	-2.3	2.1
683 Real estate activities on a fee or contract basis	184	112.6	3.5	-5.5	0.0
M+N Business support activities	1000	123.0	-0.4	0.3	1.6
M Professional, scientific and technical activities	585	121.8	0.1	0.7	1.9
69 Legal and accounting activities	90	116.5	-0.6	0.1	1.4
70 Activities of head offices...	241	127.7	1.1	0.8	2.9
71 Architectural and engineering activities...	142	119.3	-0.5	1.5	1.7
72 Scientific research and development	24	107.5	-2.7	2.7	-4.3
73 Advertising and market research	63	106.0	-3.9	0.7	1.4
74 Other professional, scientific and technical activities	19	157.4	6.5	-5.2	1.5
75 Veterinary activities	6	126.6	-0.2	1.6	1.1
N Administrative and support service activities	415	124.7	-1.0	-0.2	1.3
77 Rental and leasing activities	120	118.3	-0.2	0.1	-0.3
78 Employment activities	74	127.1	0.0	-6.5	4.5
79 Travel agency, tour operator...	35	118.9	-0.2	-2.0	-1.5
80 Security and investigation activities	20	127.1	0.6	-2.0	2.2
81 Services to buildings and landscape activities	48	121.4	-0.4	-1.3	1.9
82 Office administrative, office support and other business support activities	118	132.2	-2.8	4.7	1.3

(1) Quarter-on-quarter: last three months / previous three months.

Source: INSEE

For further information :

- Complementary data (long series) and metadata (methodology, linked internet pages, etc.) are available on the web page of the index: <http://www.insee.fr/en/themes/info-rapide.asp?id=95>
- Historical data are available on BDM: [G1795](#), [G1797](#), [G1798](#), [G1800](#), [G1801](#).
- Press contact: bureau-de-presse@insee.fr
-  Follow us on Twitter @InseeFr_News: https://twitter.com/InseeFr_News

Next issue: 29 April 2016