

## ■ Turnover in the wholesale trade and business services - December 2015

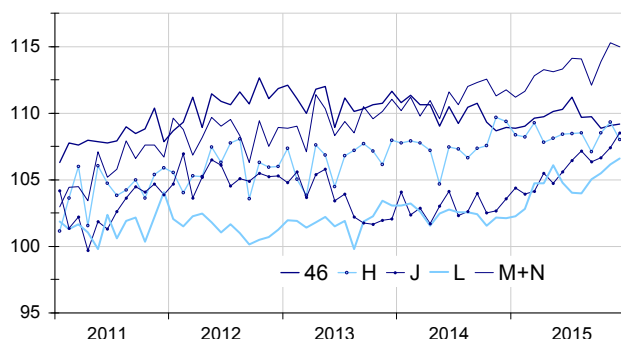
### In December 2015, the turnover declined in transportation and in business support activities but improved in information and communication

**Warning:** From the release of the indices for January 2016, on 31 March 2016, the turnover index series will be produced according to a new process that improve their quality. The series will be recalculated over the period 1999-2015. Further information concerning these changes are available on the Web page of this index.

In December 2015, the turnover fell back in *transportation and storage* (−1.2%) and in *business support activities* (−0.3%). It rose again in *information and communication* (+1.1%) and in *real estate activities* (+0.4%). It was virtually stable in the *wholesale trade*, except for *motor vehicles and motorcycles* (+0.1%).

#### Wholesale trade and business services

Turnover indices, SA-WDA value, Base year 2010



Source: INSEE

#### Virtual stability in the wholesale trade, except of motor vehicles and motorcycles

In December 2015, the turnover of the *wholesale trade*, except of *motor vehicles and motorcycles* was almost unchanged (+0.1%). It increased for *wholesalers of information and communication equipment* (+4.2%), of *household goods* (+0.7%), of *agricultural raw materials and live animals* (+1.7%). By contrast, it declined in the *wholesale of food, beverages and tobacco* (−1.2%), in *non specialised wholesale trade* (−2.5%) and in *other specialised wholesale* (−0.5%).

*vehicles and motorcycles* decreased over the fourth quarter of 2015 compared to the previous quarter (−1.0%) and was virtually stable compared to the last quarter of 2014 (+0.1%).

#### Sharp downturn in transportation and storage

In December, the turnover of *transportation and storage* dropped sharply (−1.2%) after two months of increase (+0.8% in November and +1.3% in October). It went down particularly in *land transport and transport via pipelines* (−2.8%) and in *postal and courier activities* (−2.5%). However, it recovered in *air transport* (+1.2% after −1.6%).

The turnover of *transportation and storage* was up over the fourth quarter compared to the former quarter (+0.6%) but declined slightly compared to last year (−0.2%).

#### Variation of the turnover in the wholesale trade and business services

SA-WDA value, Base year 2010

Nace classification	Weight	Change in %			
		Dec./ Nov.	Nov./ Oct.	q-o-q (1)	y-o-y (2)
<b>46 Wholesale trade, except of motor vehicles and motorcycles</b>	<b>1000</b>	<b>0.1</b>	<b>0.2</b>	<b>−1.0</b>	<b>0.1</b>
<b>H Transportation and storage</b>	<b>1000</b>	<b>−1.2</b>	<b>0.8</b>	<b>0.6</b>	<b>−0.2</b>
<b>J Information and communication</b>	<b>1000</b>	<b>1.1</b>	<b>0.7</b>	<b>0.8</b>	<b>4.5</b>
<b>L Real estate activities</b>	<b>1000</b>	<b>0.4</b>	<b>0.6</b>	<b>1.7</b>	<b>4.1</b>
<b>M+N Business support activities</b>	<b>1000</b>	<b>−0.3</b>	<b>1.2</b>	<b>1.1</b>	<b>2.5</b>
M Professional, scientific and technical activities	579	−0.1	1.1	1.5	3.4
N Administrative and support service activities	421	−0.5	1.4	0.7	1.4

(1) Quarter-on-quarter: last three months / previous three months

(2) Year-on-year: last three months / same three months of previous year

The codes correspond to different levels of aggregation of the NACE classification.

Source: INSEE

The turnover of the *wholesale trade*, except of *motor*

## Four consecutive months of increase in real estate activities

In December 2015, the turnover of *real estate activities* continued to grow (+0.4% after 0.7% on average over the previous three months). It rose sharply over the quarter (+1.7%) and over the year (+4.1%).

## Stronger increase in information and communication

The turnover in *information and communication* accelerated again in December (+1.1% after +0.7% in November and +0.3% in October). The rise was exclusively due to the rebound in *telecommunications* (+4.5% after -0.3%). Indeed the turnover decreased in the other sectors, notably in *programming and broadcasting activities* (-3.0%) and in *information service activities* (-2.0%).

The turnover in *information and communication* increased over the quarter (+0.8%) and year-on-year (+4.5%).

## Slight fall in business support activities

In December, the turnover of *business support activities* edged down (-0.3%) after two months in a row of sharp rise (+1.2% in November and +1.6% in October). Within *administrative and support service activities* (-0.5%), the turnover dropped principally in *employment activities* (-3.0%) while it increased in *rental and leasing activities* (+0.7%) and in *travel agency, tour operator and other reservation service and related activities* (+0.9%).

The turnover was virtually stable in *professional, scientific and technical activities* (-0.1%); it declined sharply in *legal and accounting activities* (-1.9%) while it increased in *advertising and market research* (+0.5%) and in *scientific research and development* (+0.9%).

The turnover in *business support activities* went up over the quarter (+1.1%) and over the year (+2.5%).

### Revisions

The variation of turnover for November 2015 has been revised upwards by +0.4 points in *real estate activities* (revision due to the new calculation of the SA-WDA) and by 0.1 points in *information and communication*. That same month, the variation has been lowered by 0.1 points in *business support activities*. It remained unchanged in the *wholesale trade, except of motor vehicles* and in *transportation and storage*.

## Variation of the turnover in the wholesale trade and business services


SA-WDA value, Base year 2010

Nace Classification	Weight	Dec. 2015	Change in %		
			Dec./ Nov.	Nov./ Oct.	q-o-q (1)
<b>46 Wholesale trade, except of motor vehicles and motorcycles</b>	<b>1000</b>	<b>109.2</b>	<b>0.1</b>	<b>0.2</b>	<b>-1.0</b>
461 Wholesale on a fee or contract basis	152	117.7	0.3	0.8	-0.2
462 Wholesale of agricultural raw materials and live animals	54	114.5	1.7	0.1	-6.7
463 Wholesale of food, beverages and tobacco	170	112.5	-1.2	2.3	-1.1
464 Wholesale of household goods	207	108.7	0.7	-0.8	0.2
465 Wholesale of information and communication equipment	61	107.6	4.2	0.0	0.8
466 Wholesale of other machinery, equipment and supplies	125	115.1	-0.3	0.4	0.6
467 Other specialised wholesale	197	95.5	-0.5	-1.7	-2.7
469 Non specialised wholesale trade	34	109.6	-2.5	1.4	-2.5
<b>H Transportation and storage</b>	<b>1000</b>	<b>108.0</b>	<b>-1.2</b>	<b>0.8</b>	<b>0.6</b>
49 Land transport and transport via pipelines	407	106.9	-2.8	2.9	0.2
50 Water transport	73	118.3	-0.8	-0.4	-0.2
51 Air transport	91	102.2	1.2	-1.6	-2.2
52 Warehousing and support activities for transportation	360	110.4	0.1	-1.3	1.9
53 Postal and courier activities	69	99.0	-2.5	3.9	0.5
<b>J Information and communication</b>	<b>1000</b>	<b>108.5</b>	<b>1.1</b>	<b>0.7</b>	<b>0.8</b>
58 Publishing activities	158	106.7	-0.5	0.3	0.1
59 Motion picture, video and television programme production...	76	108.1	-0.4	0.2	1.6
60 Programming and broadcasting activities	61	102.2	-3.0	0.5	-2.3
61 Telecommunications	396	100.0	4.5	-0.3	0.1
62 Computer programming, consultancy and related activities	251	124.1	-0.4	2.3	2.7
63 Information service activities	58	111.2	-2.0	0.7	0.5
<b>L Real estate activities</b>	<b>1000</b>	<b>106.6</b>	<b>0.4</b>	<b>0.6</b>	<b>1.7</b>
681 Buying and selling of own real estate	96	84.9	2.3	-1.6	3.9
682 Renting and operating of own or leased real estate	691	108.3	0.6	1.2	-0.1
683 Real estate activities on a fee or contract basis	213	110.9	-0.7	-0.5	6.8
<b>M+N Business support activities</b>	<b>1000</b>	<b>115.0</b>	<b>-0.3</b>	<b>1.2</b>	<b>1.1</b>
<b>M Professional, scientific and technical activities</b>	<b>579</b>	<b>115.9</b>	<b>-0.1</b>	<b>1.1</b>	<b>1.5</b>
69 Legal and accounting activities	90	111.7	-1.9	2.5	1.6
70 Activities of head offices...	219	123.5	0.1	0.7	2.5
71 Architectural and engineering activities...	151	113.2	0.1	1.4	0.1
72 Scientific research and development	26	107.9	0.9	-1.4	-0.1
73 Advertising and market research	68	105.7	0.5	1.3	2.1
74 Other professional, scientific and technical activities	19	116.3	0.0	1.1	0.1
75 Veterinary activities	6	118.9	1.3	0.4	0.6
<b>N Administrative and support service activities</b>	<b>421</b>	<b>113.7</b>	<b>-0.5</b>	<b>1.4</b>	<b>0.7</b>
77 Rental and leasing activities	98	113.1	0.7	0.6	1.3
78 Employment activities	80	113.5	-3.0	6.5	1.0
79 Travel agency, tour operator...	42	108.3	0.9	-1.3	0.7
80 Security and investigation activities	21	114.4	-1.7	1.7	-0.3
81 Services to buildings and landscape activities	50	111.8	-0.7	1.6	0.2
82 Office administrative, office support and other business support activities	131	116.6	0.1	-0.4	0.3

(1) Quarter-on-quarter: last three months / previous three months.

Source: INSEE

### For further information :

- Complementary data (long series) and metadata (methodology, linked internet pages, etc.) are available on the web page of the index: <http://www.insee.fr/en/themes/info-rapide.asp?id=95>
- Historical data are available on BDM: [G1418](#), [G1421](#), [G1423](#), [G1424](#), [G1426](#).
- Press contact: [bureau-de-presse@insee.fr](mailto:bureau-de-presse@insee.fr)
-  Follow us on Twitter @InseeFr\_News: [https://twitter.com/InseeFr\\_News](https://twitter.com/InseeFr_News)

Next issue: 31 March 2016