

Informations Rapides

10 septembre 2015 - n° 218

Principaux indicateurs



Industrial Production Indices – July 2015

In July 2015, manufacturing output decreased again (–1.0%)

Please note: all the series are seasonally (SA) and working-day adjusted (WDA).

The commentary shows variations of subsections by decreasing contribution. The contribution of a subsection depends on the extent of the change and on its weight.

In July 2015, output decreased again in the **manufacturing industry** (–1.0% after –0.6% in June). It also went down in the **industry as a whole** (–0.8% after 0.0% in June).

Manufacturing output diminished over the last three months (–0.7%)

Over the last three months, output decreased in the manufacturing sector (–0.7% q-o-q) as well as in the industry as a whole (–0.6% q-o-q). Output plummeted in the *manufacture of coke and refined petroleum products* (–14.5%). It decreased more moderately in *other manufacturing* (–0.4%), in the *manufacture of transport equipment* (–1.9%), in the *manufacture of electrical and electronic equipment; machine equipment* (–0.8%) as well as in *mining, quarrying, energy and water supply* (–0.4%). Conversely, output increased in the *manufacture of food products and beverages* (+0.8%).

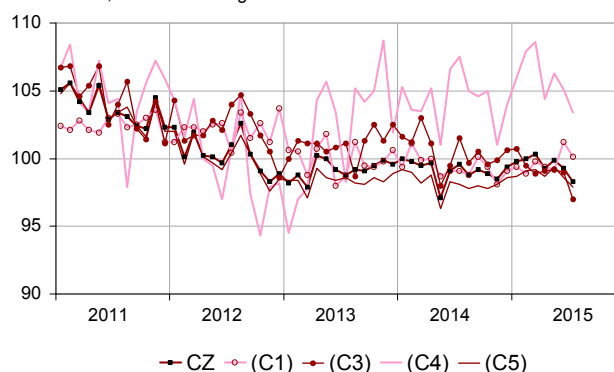
Over the year, manufacturing output increased (+0.6%)

Manufacturing output of the last three months increased compared to the same months of 2014 (+0.6% y-o-y). Overall industrial output also went up (+0.7% y-o-y).

On the same period, output increased in most sectors: in *other manufacturing* (+1.1%), in *mining, quarrying, energy and water supply* (+1.5%), in the *manufacture of food products and beverages* (+1.2%), in the *manufacture of coke and refined petroleum products* (+1.5%). However it went down in the *manufacture of electrical and electronic equipment* (–1.3%), and remained virtually stable in the *manufacture of transport equipment* (–0.1%).

Monthly Industrial Production Indices

2010 based, SA-WDA changes in %



Legend: CZ: Manufacturing - (C1): Manufacture of food products and beverages - (C3): Electrical and electronic equipment; machine equipment - (C4): Manufacture of transport equipment - (C5): Other manufacturing
Sources: INSEE, SSP, SOeS

Variation of the Industrial Production

2010 based, SA-WDA changes in %

NA: A10. (A17)	July / June	June / May	Q-o-Q change (1)	Year on year change (2)
BE: INDUSTRY	–0.8	0.0	–0.6	0.7
CZ: Manufacturing	–1.0	–0.6	–0.7	0.6
(C1): Manufacture of food products and beverages	–1.1	2.0	0.8	1.2
(C2): Manufacture of coke and refined petroleum products	4.6	–12.7	–14.5	1.5
(C3): Electrical and electronic equipment; machine equipment	–2.0	–0.2	–0.8	–1.3
(C4): Manufacture of transport equipment	–1.6	–1.1	–1.9	–0.1
(C5): Other manufacturing	–0.7	–0.8	–0.4	1.1
(DE): Mining and quarrying; energy; water supply; waste management	0.0	2.2	–0.4	1.5
FZ: CONSTRUCTION	1.0	–1.9	–0.1	–4.1

(1) Last three months / previous three months

(2) Last three months / same three months of previous year

The codes correspond to the level of aggregation A 10 (A 17) of the "NA" aggregate classification based on NAF rev.2.

Sources: INSEE, SSP, SOeS

Variation of the Industrial Production

2010 based, SA-WDA changes in %

NA: A10. (A17). [A38 ou A64]	July 2015	July / June	June / May	Quarter on quarter change
BE: INDUSTRY	98.0	-0.8	0.0	-0.6
CZ: Manufacturing	98.3	-1.0	-0.6	-0.7
(C1): Man. of food products and beverages	100.1	-1.1	2.0	0.8
(C2): Man. of coke and refined petroleum products	79.4	4.6	-12.7	-14.5
(C3): Electrical and electronic equipment; machine equipment	97.0	-2.0	-0.2	-0.8
[CI] Man. of computer. electronic and optical products	101.9	-2.7	-0.4	1.7
[CJ] Man. of electrical equipment	87.4	-2.1	-0.3	-2.0
[CK] Man. of machinery and equipment n.e.c. (1)	100.1	-1.4	0.0	-1.6
(C4): Man. of transport equipment	103.4	-1.6	-1.1	-1.9
[CL1] Man. of motor vehicles. trailers and semi-trailers	90.5	-2.9	-0.2	-2.5
[CL2] Man. of other transport equipment	118.0	-0.4	-1.8	-1.4
(C5): Other manufacturing	97.9	-0.7	-0.8	-0.4
[CB] Man. of textiles. wearing apparel. leather and related products	93.9	-0.2	-1.5	-2.7
[CC] Man. of wood and paper products; printing and reproduction of recorded media	87.1	0.2	-1.9	0.6
[CE] Man. of chemicals and chemical products	110.3	0.7	0.6	0.6
[CF] Man. of basic pharmaceutical products and pharmaceutical preparations	110.7	0.0	0.1	1.3
[CG] Man. of rubber and plastics products. and other non-metallic mineral products	94.4	-0.6	-2.3	0.3
[CH] Man. of basic metals and fabricated metal products. except machinery and equipment	93.1	-1.5	-0.8	-2.0
[CM] Other manufacturing; repair and installation of machinery and equipment	101.8	-1.5	-0.1	0.2
(DE): Mining and quarrying; energy; water supply; waste management	96.5	0.0	2.2	-0.4
[BZ] Mining and quarrying	96.5	-1.2	1.0	3.1
[DZ] Electricity. gas. steam and air-conditioning supply	93.5	0.0	2.3	-1.4
[EZ] Water supply; sewerage. waste management and remediation	117.4	0.3	2.0	4.5
FZ: CONSTRUCTION	86.7	1.0	-1.9	-0.1
MIGs (2)				
Capital goods	99.7	-2.0	-0.3	-1.4
Intermediate goods	95.6	-0.6	-1.2	-0.2
Consumer durables	95.3	-1.3	0.2	1.1
Consumer non-durables	102.9	-0.6	1.0	0.4
Energy	95.0	0.4	1.2	-1.6

(1) n.e.c. : not elsewhere classifiable

(2) Main industrial groupings: definition in Commission regulation EC of June 14th 2007

Sources: INSEE, SSP, SOeS

In July 2015 output decreased again in other manufacturing (-0.7% after -0.8%)

Output went down in particular in the *manufacture of basic metals and fabricated metal products, except machinery and equipment* (-1.5%) and in *other manufacturing; repair and installation of machinery and equipment* (-1.5%).

Output declined sharply in electrical and electronic equipment; machine equipment (-2.0%)

Output went down in all sectors: the *manufacture of computer, electronic and optical products* (-2.7%), the *manufacture of machinery and equipment n.e.c.* (-1.4%) and the *manufacture of electrical equipment* (-2.1%).

Output went down further in the manufacture of transport equipment (-1.6% after -1.1%)

Output dropped sharply in the *manufacture of motor vehicles, trailers and semi-trailers* (-2.9% after -0.2%). It declined to a lesser extent in the *manufacture of other transport equipment* (-0.4%).

Output fell back in the manufacture of food products and beverages (-1.1%)

Output fell back significantly in the *manufacture of food products and beverages* (-1.1%) after a strong rise in June (+2.0%), in particular in *bakery and farinaceous products* and in *beverages*.

Conversely, output bounced back in the manufacture of coke and refined petroleum products (+4.6%)

Output bounced back in the *manufacture of coke and refined petroleum products* (+4.6% after -12.7%) due to the recovery of activity of a refinery.

Output was stable in mining and quarrying; energy; water supply; waste management

Output remained stable in *electricity, gas, steam and air-conditioning supply* (+0.0% after +2.3%).

Revisions in June 2015

Revisions of changes

	(in point %)				
	June / May	May / April	April / March	Q2 2015 / Q1 2015	2014 / 2013
Industry (BE)	0.10	-0.10	0.10	0.00	0.03
raw serie	0.07	-0.07	0.28	0.23	0.03
SA-WDA coefficient	0.03	-0.03	-0.18	-0.23	0.00
Manufacturing (CZ)	0.10	-0.10	0.00	-0.03	0.06
raw serie	0.06	-0.06	0.27	0.23	0.03
SA-WDA coefficient	0.04	-0.04	-0.27	-0.26	0.03

How to read it: in the manufacturing sector, the SA-WDA evolution between May 2015 and June 2015 is revised by +0.10 point:

0.06 is due to the raw data revision and 0.04 to the new calculation of the SA-WDA coefficients.

Sources: INSEE, SSP, SOeS

Learn more:

- Complementary data (long series) and metadata (methodology, linked internet pages, etc.) are available on the web page of this index: <http://www.insee.fr/en/themes/info-rapide.asp?id=10>
- Historical data are available on the BDM: [G1397](#), [G1398](#), [G1400](#), [G1401](#), [G1411](#).
- Press contact: bureau-de-presse@insee.fr
- Follow us on [Twitter](#) @InseeFr_News: https://twitter.com/InseeFr_News