

# Informations Rapides

7 août 2015 - n° 192

Principaux indicateurs



## Industrial Production Indices – June 2015

### In June 2015, manufacturing output decreased (-0.7%)

Please note: all the series are seasonally (SA) and working-day adjusted (WDA).

The commentary shows variations of subsections by decreasing contribution. The contribution of a subsection depends on the extent of the change and on its weight.

In June 2015, output decreased in the **manufacturing industry** (-0.7% after +0.7% in May) and was almost stable in the **industry as a whole** (-0.1% after +0.4% in May).

#### Manufacturing output diminished over the last quarter (-0.5%)

Over the last quarter, output decreased in the manufacturing sector (-0.5% q-o-q) as well as in the industry as a whole (-0.7% q-o-q).

Output declined in *mining, quarrying, energy and water supply* (-1.7%), in the *manufacture of transport equipment* (-1.9%) and more sharply in the *manufacture of coke and refined petroleum products* (-11.6%). It decreased slightly in *other manufacturing* (-0.3%). Conversely, output increased a little in the *manufacture of electrical and electronic equipment; machine equipment* (+0.3%) and in the *manufacture of food products and beverages* (+0.2%).

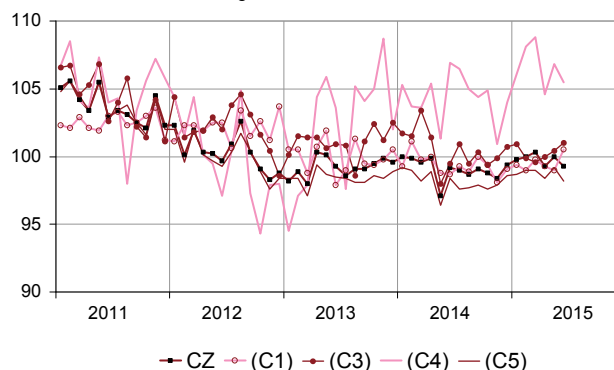
#### Over the year, manufacturing output increased (+0.8%)

Manufacturing output of the second quarter of 2015 increased compared to the second quarter of 2014 (+0.8% y-o-y). For that same period, overall industrial output also went up (+1.0% y-o-y).

Output increased in all sectors: in *other manufacturing* (+0.7%), in *mining, quarrying, energy and water supply* (+1.6%), in the *manufacture of electrical and electronic equipment* (+0.8%), in the *manufacture of transport equipment* (+1.1%) and more markedly in the *manufacture of coke and refined petroleum products* (+5.1%). It went up moderately in the *manufacture of food products and beverages* (+0.4%).

#### Monthly Industrial Production Indices

2010 based, SA-WDA changes in %



Legend: CZ: Manufacturing - (C1): Manufacture of food products and beverages - (C3): Electrical and electronic equipment; machine equipment - (C4): Manufacture of transport equipment - (C5): Other manufacturing  
Sources: INSEE, SSP, SOeS

#### Variation of the Industrial Production

2010 based, SA-WDA changes in %

	June / May	May / April	Q-o-Q change (1)	Year on year change (2)
<b>NA: A10, (A17)</b>				
<b>BE: INDUSTRY</b>	<b>-0.1</b>	<b>0.4</b>	<b>-0.7</b>	<b>1.0</b>
<b>CZ: Manufacturing</b>	<b>-0.7</b>	<b>0.7</b>	<b>-0.5</b>	<b>0.8</b>
(C1): Manufacture of food products and beverages	1.5	-0.3	0.2	0.4
(C2): Manufacture of coke and refined petroleum products	-13.8	-3.0	-11.6	5.1
(C3): Electrical and electronic equipment; machine equipment	0.6	0.4	0.3	0.8
(C4): Manufacture of transport equipment	-1.2	2.1	-1.9	1.1
(C5): Other manufacturing	-1.0	0.8	-0.3	0.7
(DE): Mining and quarrying; energy; water supply; waste management	2.2	-0.8	-1.7	1.6
<b>FZ: CONSTRUCTION</b>	<b>-2.5</b>	<b>0.9</b>	<b>-1.3</b>	<b>-5.3</b>

(1) Last three months / previous three months

(2) Last three months / same three months of previous year

The codes correspond to the level of aggregation A 10 (A 17) of the "NA" aggregate classification based on NAF rev.2.

Sources: INSEE, SSP, SOeS

## Variation of the Industrial Production

2010 based, SA-WDA changes in %

NA: A10, (A17), [A38 ou A64]	June 2015	June / May	May / April	Quarter on quarter change
<b>BE: INDUSTRY</b>	<b>98.8</b>	<b>-0.1</b>	<b>0.4</b>	<b>-0.7</b>
<b>CZ: Manufacturing</b>	<b>99.3</b>	<b>-0.7</b>	<b>0.7</b>	<b>-0.5</b>
<b>(C1): Man. of food products and beverages</b>	<b>100.5</b>	<b>1.5</b>	<b>-0.3</b>	<b>0.2</b>
<b>(C2): Man. of coke and refined petroleum products</b>	<b>75.1</b>	<b>-13.8</b>	<b>-3.0</b>	<b>-11.6</b>
<b>(C3): Electrical and electronic equipment; machine equipment</b>	<b>101.0</b>	<b>0.6</b>	<b>0.4</b>	<b>0.3</b>
[CI] Man. of computer, electronic and optical products	107.1	1.0	1.3	2.3
[CJ] Man. of electrical equipment	89.7	-0.3	0.4	-1.3
[CK] Man. of machinery and equipment n.e.c. (1)	104.2	0.7	-0.2	0.1
<b>(C4): Man. of transport equipment</b>	<b>105.5</b>	<b>-1.2</b>	<b>2.1</b>	<b>-1.9</b>
[CL1] Man. of motor vehicles, trailers and semi-trailers	93.8	-0.2	-0.6	-0.1
[CL2] Man. of other transport equipment	118.7	-2.1	4.6	-3.3
<b>(C5): Other manufacturing</b>	<b>98.2</b>	<b>-1.0</b>	<b>0.8</b>	<b>-0.3</b>
[CB] Man. of textiles, wearing apparel, leather and related products	94.4	-1.4	0.7	-2.4
[CC] Man. of wood and paper products; printing and reproduction of recorded media	86.2	-2.8	1.6	-0.5
[CE] Man. of chemicals and chemical products	109.6	0.5	1.2	-1.6
[CF] Man. of basic pharmaceutical products and pharmaceutical preparations	108.5	0.1	0.1	1.1
[CG] Man. of rubber and plastics products, and other non-metallic mineral products	95.2	-2.1	1.9	0.8
[CH] Man. of basic metals and fabricated metal products, except machinery and equipment	94.5	-1.0	-0.2	-1.1
[CM] Other manufacturing; repair and installation of machinery and equipment	102.4	-0.2	0.8	0.7
<b>(DE): Mining and quarrying; energy; water supply; waste management</b>	<b>96.4</b>	<b>2.2</b>	<b>-0.8</b>	<b>-1.7</b>
[BZ] Mining and quarrying	97.6	0.9	1.8	1.9
[DZ] Electricity, gas, steam and air-conditioning supply	93.5	2.4	-1.2	-2.9
[EZ] Water supply; sewerage, waste management and remediation	116.5	1.8	0.2	4.8
<b>FZ: CONSTRUCTION</b>	<b>84.9</b>	<b>-2.5</b>	<b>0.9</b>	<b>-1.3</b>
<b>MIGs (2)</b>				
Capital goods	102.2	-0.2	0.7	-0.9
Intermediate goods	96.3	-1.2	1.4	-0.1
Consumer durables	98.0	0.3	0.7	2.7
Consumer non-durables	102.6	0.6	-0.3	-0.1
Energy	94.5	1.1	-1.1	-2.5

(1) n.e.c.: not elsewhere classifiable

(2) Main industrial groupings: definition in Commission regulation EC of June 14th 2007

Sources: INSEE, SSP, SOeS

## In June 2015 output decreased in other manufacturing (-1.0%)

Output went down in particular in the *manufacture of rubber and plastics products* (-2.1%), in the *manufacture of basic metals and fabricated metal products, except machinery and equipment* (-1.0%) and in the *manufacture of wood and paper products; printing and reproduction of recorded media* (-2.8%).

## Output plummeted in the manufacture of coke and refined petroleum products (-13.8%)

Output plummeted in the *manufacture of coke and refined petroleum products* (-13.8%) due to maintenance shutdowns of refineries.

## Output went down in the manufacture of transport equipment (-1.2%)

Output deteriorated in the *manufacture of other transport equipment* (-2.1% after +4.6%) and declined again, but more slightly, in the *manufacture of motor vehicles, trailers and semi-trailers* (-0.2% after -0.6%).

## Conversely, output bounced back in mining and quarrying; energy; water supply; waste management (+2.2%)...

In particular, output bounced back in the *electricity, gas, steam and air-conditioning supply* (+2.4% after -1.2%).

## ...as well as in the manufacture of food products and beverages (+1.5%)

Output increased in the *manufacture of food products and beverages* (+1.5%), in particular in *bakery and farinaceous products* and in *beverages*.

## Output improved in electrical and electronic equipment; machine equipment (+0.6%)

Output went up in the *manufacture of computer, electronic and optical products* (+1.0%) and in the *manufacture of machinery and equipment n.e.c.* (+0.7%). On the contrary output declined slightly in the *manufacture of electrical equipment* (-0.3%).

## • Revisions in May 2015

### Revisions of changes


(in point %)

	May / April	April / March	March / Feb.	Q1 2015 / Q4 2014	2014 / 2013
<b>Industry (BE)</b>	<b>0.00</b>	<b>-0.20</b>	<b>-0.10</b>	<b>0.21</b>	<b>-0.11</b>
raw serie	0.04	-0.21	-0.19	-0.17	-0.08
SA-WDA coefficient	-0.04	0.01	0.09	0.38	-0.03
<b>Manufacturing (CZ)</b>	<b>0.10</b>	<b>-0.20</b>	<b>-0.10</b>	<b>0.17</b>	<b>-0.13</b>
raw serie	0.04	-0.20	-0.19	-0.17	-0.11
SA-WDA coefficient	0.06	0.00	0.09	0.34	-0.02

How to read it: in the manufacturing sector, the SA-WDA evolution between April 2015 and May 2015 is revised by +0.10 point: +0.04 point is due to the raw data revision and +0.06 point to the new calculation of the SA-WDA coefficients.

Sources: INSEE, SSP, SOeS

### Learn more:

- Complementary data (long series) and metadata (methodology, linked internet pages, etc.) are available on the web page of this index: <http://www.insee.fr/en/themes/info-rapide.asp?id=10>
- Historical data are available on the BDM: [G1397](#), [G1398](#), [G1400](#), [G1401](#), [G1411](#).
- Press contact: [bureau-de-presse@insee.fr](mailto:bureau-de-presse@insee.fr)
-  Follow us on [Twitter @InseeFr\\_News](https://twitter.com/InseeFr_News): [https://twitter.com/InseeFr\\_News](https://twitter.com/InseeFr_News)