

# Informations Rapides

29 août 2014 - n° 200



## ■ Turnover in industry and construction – June 2014

### In June 2014, the turnover in manufacturing industry climbed compared to May (+1.9%)

Every index in this issue is in value, seasonally and working day adjusted.  
The commentary shows variations of subsections by decreasing contribution. The contribution of a subsection depends on the extent of the change and on its weight.

In June 2014, the turnover rose sharply in the **manufacturing industry** (+1.9%) after a significant decrease in May (–1.4%). Exports rebounded as well (+3.3%).

The turnover went up in the **industry as a whole** (+1.6%).

#### Slight decrease over the last three months (–0.4%)...

Over the quarter (q-o-q), the turnover went down slightly in the **manufacturing industry** (–0.4%) and in the **industry as a whole** (–0.5%).

The turnover declined in **other manufacturing** (–1.2%), mainly in the **manufacture of rubber and plastic products**, and **other non-metallic mineral products** (–2.3%) and in the **manufacture of basic metals and fabricated metal products** (–1.4%). It plunged in the **manufacture of coke and refined petroleum products** (–4.1%) and it fell in the **electrical and electronic equipment; machine equipment** (–1.0%). On the contrary, it rose in the **manufacture of transport equipment** (+2.0%) owed to a considerable upsurge in the **manufacture of other transport equipment** (+4.1%), and in the **manufacture of food products and beverages** (+1.0%).

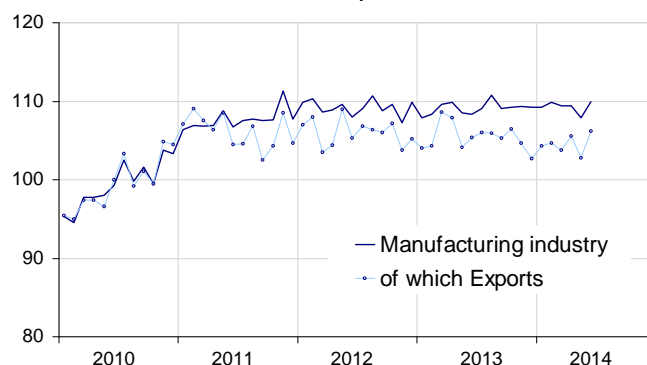
#### ...and a very slight rise over the last year (+0.2%)

Year-on-year, the turnover grew very slightly in the **manufacturing industry** (+0.2%).

Over this period, the turnover improved in the **manufacture of transport equipment** (+3.7%) and in the **manufacture of food products and beverages** (+2.0%). Conversely, it dropped in the **manufacture of coke and refined petroleum products** (–4.5%), in **other manufacturing** (–0.6%) and in the **electrical and electronic equipment; machine equipment** (–2.2%).

#### Turnover in manufacturing industry

Turnover indexes, SA-WDA value, Base year 2010



Source: INSEE

#### Variation of the turnover in industry and construction

SA-WDA value, Base year 2010

NA : A 10, (A 17)	Weight**	Change in %			
		June/ May	May/ Apr.	q-o-q (1)	y-o-y (2)
<b>BE: INDUSTRY</b>	<b>10000</b>	<b>1.6</b>	<b>–1.1</b>	<b>–0.5</b>	<b>–0.5</b>
<b>CZ: MANUFACTURING</b>	<b>8373</b>	<b>1.9</b>	<b>–1.4</b>	<b>–0.4</b>	<b>0.2</b>
<i>Of which Exports</i>	<i>2731</i>	<i>3.3</i>	<i>–2.7</i>	<i>0.6</i>	<i>–0.9</i>
(C1): Manufacture of food products and beverages	1647	2.5	–2.4	1.0	2.0
(C2): Manufacture of coke and refined petroleum products	478	–2.9	6.6	–4.1	–4.5
(C3): Electrical and electronic equipment; machine equipment	1005	1.3	–2.6	–1.0	–2.2
(C4): Manufacture of transport equipment	1428	4.1	0.2	2.0	3.7
(C5): Other manufacturing	3815	1.7	–2.0	–1.2	–0.6
DE: Mining and quarrying; energy; water supply; waste management	1627	–0.4	0.2	–1.3	–4.0
<b>FZ: CONSTRUCTION</b>	<b>10000</b>	<b>2.1</b>	<b>–0.2</b>	<b>1.9</b>	<b>1.9</b>

\*\* 10000=B...E and F

(1) Quarter-on-quarter: last three months / previous three months

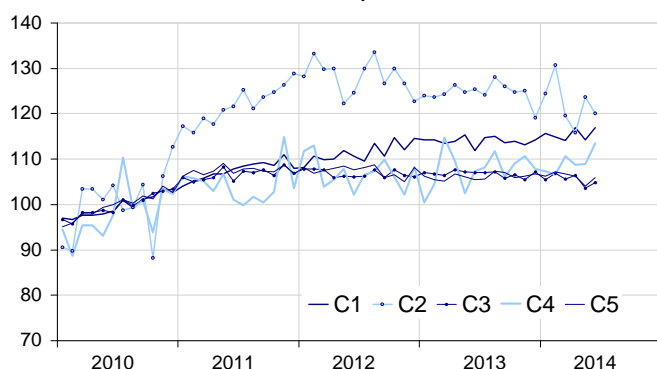
(2) Year-on-year: last three months / same three months of the previous year

The codes correspond to different levels of aggregation of the NACE classification.

Source: INSEE

## Turnover in manufacturing industry by sector

Turnover indexes, SA-WDA value, Base year 2010



Source: INSEE

### In June 2014, the turnover grew substantially in other manufacturing (+1.7%)

In June, the turnover went up significantly in *other manufacturing* (+1.7%), after a three-month-in-a-row fall. It rose in all sectors, mainly in the *manufacture of rubber and plastics products*, and *other non-mineral products* (+3.4%), in the *manufacture of basic metals and fabricated metal products* (+1.9%) and in the *manufacture of chemicals and chemical products* (+2.1%).

### Dramatic rise in transport equipment (+4.1%)

In June, the turnover soared in the *manufacture of transport equipment* (+4.1%) after a slight rise in May (+0.2%). It grew considerably in the *manufacture of other transport equipment* (+5.1%) and significantly in the *manufacture of motor vehicles, trailers and semi-trailers* (+2.8%). Exports recovered dramatically (+7.7%).

### Rebound in food products and beverages (+2.5%)...

In June, the turnover bounced back in the *manufacture of food products and beverages* (+2.5%), after a significant fall in May (-2.4%).

### ...and in equipments (+1.3%)

The turnover went up substantially in June in the *electrical and electronic equipment; machine equipment* (+1.3%) after a sharp decrease in May (-2.6%). It grew significantly in the *manufacture of machinery and equipment n.e.c.* (+2.3%), and moderately in the *manufacture of electrical equipment* (+0.5%) and in the *manufacture of computer, electronic and optical products* (+0.3%).

### Fall in coke and refined petroleum products (-2.9%)

The turnover dropped in the *manufacture of coke and refined petroleum products* (-2.9%) after a considerable growth in May (+6.6%).

#### • No revision in the manufacturing industry

In the *manufacturing industry*, the change of the turnover in May is confirmed at -1.4%. However, some revisions concern the *manufacture of other transport equipment* and the *manufacture of coke and refined petroleum products*.

## Indexes of turnover in industry and construction

SA-WDA value, based year 2010

Industries:	Weight*	June 2014	Change in %		
			June/ May	May/ Apr.	q-o-q (1)
<b>BE: INDUSTRY</b>	<b>10000</b>	<b>109.4</b>	<b>1.6</b>	<b>-1.1</b>	<b>-0.5</b>
<b>CZ: MANUFACTURING</b>	<b>8373</b>	<b>110.0</b>	<b>1.9</b>	<b>-1.4</b>	<b>-0.4</b>
of which Exports	2731	106.2	3.3	-2.7	0.6
<b>(C1): Man. of food products and beverages</b>	<b>1647</b>	<b>117.0</b>	<b>2.5</b>	<b>-2.4</b>	<b>1.0</b>
of which Exports	284	120.0	3.0	-6.2	-0.4
<b>(C2): Man. of coke and refined petroleum products</b>	<b>478</b>	<b>120.0</b>	<b>-2.9</b>	<b>6.6</b>	<b>-4.1</b>
<b>(C3): Electrical and electronic equipment; machine equipment</b>	<b>1005</b>	<b>104.9</b>	<b>1.3</b>	<b>-2.6</b>	<b>-1.0</b>
of which Exports	483	103.5	2.6	-3.5	-0.8
[CI] Man. of computer, electronic and optical products	269	97.6	0.3	-5.1	0.5
[CJ] Man. of electrical equipment	302	98.3	0.5	-3.3	-3.4
[CK] Man. of machinery and equipment n.e.c.	434	114.0	2.3	-1.1	-0.3
<b>(C4): Man. of transport equipment</b>	<b>1428</b>	<b>113.5</b>	<b>4.1</b>	<b>0.2</b>	<b>2.0</b>
of which Exports	693	102.6	7.7	-1.4	6.5
[CL1] Man. of motor vehicles, trailers and semi-trailers	689	92.6	2.8	-1.9	-0.9
[CL2] Man. of other transport equipment	739	133.0	5.1	1.7	4.1
<b>(C5): Other manufacturing</b>	<b>3815</b>	<b>105.9</b>	<b>1.7</b>	<b>-2.0</b>	<b>-1.2</b>
of which Exports	1213	105.6	1.9	-2.4	-1.6
[CB] Man. of textiles, wearing apparel, leather and related products	191	110.6	1.3	-1.3	0.1
[CC] Man. of wood and paper products; printing and reproduction of recorded media	427	101.1	1.1	-1.4	-1.3
[CE] Man. of chemicals and chemical products	706	107.0	2.1	-1.8	-1.1
[CF] Man. of basic pharmaceutical products and pharmaceutical preparations	322	99.2	0.9	-2.6	0.7
[CG] Man. of rubber and plastics products, and other non-metallic mineral products	620	104.4	3.4	-3.7	-2.3
[CH] Man. of basic metals and fabricated metal products, except machinery and equipment	900	105.4	1.9	-1.9	-1.4
[CM] Other manufacturing; repair and installation of machinery and equipment	649	112.0	0.8	-1.3	-1.3
<b>DE: Mining and quarrying; energy, water supply, sewerage, waste management</b>	<b>1627</b>	<b>106.2</b>	<b>-0.4</b>	<b>0.2</b>	<b>-1.3</b>
[BZ] Mining and quarrying	69	105.7	1.5	-2.9	-1.9
[DZ] Electricity, gas, steam and air-conditioning supply	1216	106.3	-1.3	0.6	-1.9
[EZ] Water supply; sewerage, waste management and remediation	342	105.8	2.8	-0.6	0.9
<b>FZ: CONSTRUCTION</b>	<b>10000</b>	<b>109.6</b>	<b>2.1</b>	<b>-0.2</b>	<b>1.9</b>

\*\* 10000=B...E and F

(1) Quarter-on-quarter: last three months / previous three months

Source: INSEE

## Measure of variations' revisions

(in point %)

	May/ Apr.	Apr./ Mar.	Mar./ Feb.	Q1 2014/ Q4 2013	2013/ 2012
<b>Industry (BE)</b>	<b>0.00</b>	<b>0.09</b>	<b>0.00</b>	<b>0.03</b>	<b>0.02</b>
raw serie	0.09	0.00	0.00	0.00	0.00
SA-WDA coeff.	-0.09	0.09	0.00	0.03	0.02
<b>Manufacturing industry (CZ)</b>	<b>0.00</b>	<b>0.18</b>	<b>0.00</b>	<b>0.09</b>	<b>0.03</b>
raw serie	0.17	-0.09	0.00	0.00	0.00
SA-WDA coeff.	-0.17	0.27	0.00	0.09	0.03

Foot note: in the manufacturing industry, the SA-WDA evolution between April and May 2014 is not revised, the raw serie's revision (+0.17%) is balanced by the new calculation of the SA-WDA (-0.17%).

Source: INSEE

## For further information:

- Complementary data (long series) and metadata (methodology, linked internet pages...) are available on the HTML page of this index: <http://www.insee.fr/fr/themes/info-rapide.asp?id=53>
- Historical data are available on the BDM: [G1444](#), [G1445](#), [G1446](#), [G1447](#), [G1448](#) and [G1529](#)
- Press contact: [bureau-de-presse@insee.fr](mailto:bureau-de-presse@insee.fr)
- Follow us on [Twitter](#) @InseeFr\_News

Next issue: September 30<sup>th</sup>, 2014