

Informations *Rapides*

29 août 2014 - n° 202



■ Turnover in the wholesale trade and business services - June 2014

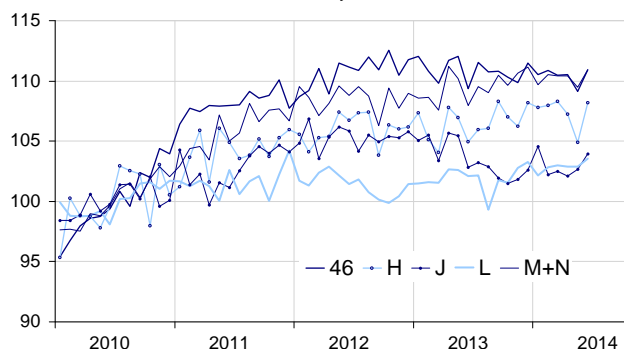
In June 2014, the turnover bounced back in transportation and storage, in the wholesale trade and in business support activities

Every index in this issue is in value, seasonally and working day adjusted (SA-WDA). The commentary shows variations of subsections by decreasing contribution. The contribution of a subsection depends on the extent of the change and on its weight.

In June 2014, the turnover rose significantly in *transportation and storage* (+3.1%), in the *wholesale trade, except for motor vehicles and motorcycles* (+1.7%), in *business support activities* (+1.4%), in *information and communication* (+1.2%) and more moderately in *real estate activities* (+0.6%).

Wholesale trade and business services

Turnover indices, SA-WDA value, Base year 2010



Source : INSEE

Bounce-back in the wholesale trade, except for motor vehicles and motorcycles...

In June, the turnover increased in the *wholesale trade, except for motor vehicles and motorcycles* (+1.7% after -1.3% in May). In particular, it improved in the *wholesale of food, beverages and tobacco* (+2.1%), in *other specialised wholesale* (+1.9%), in the *wholesale of other machinery, equipment and supplies* (+2.8%), in the *wholesale of agricultural raw materials and live animals* (+4.9%) as well as in the *wholesale of household goods* (+1.3%).

The turnover decreased over the last three months (-0.4%) and over the year (-0.8%, y-o-y).

...and in transportation and storage

In June, the turnover of *transportation and storage* rebounded sharply (+3.1%) after a two-month-in-a-row fall. It improved substantially in *land transport and transport via pipelines* (+4.9%), in *warehousing and support activities for transportation* (+2.2%), and to an even greater extent in *postal and courier activities* (+7.2%). Conversely, it went down in *air transport* (-2.1%).

The turnover of *transportation and storage* declined over the last three months (-1.1%, q-o-q) but improved slightly over the year (+0.2%, y-o-y).

Increase in real estate activities

The turnover of *real estate activities* increased in June (+0.6% after 0.0% in May). It rose slightly over the last three months (+0.4%) and over the year (+0.6%).

Variation of the turnover in the wholesale trade and business services

SA-WDA value, Base year 2010

Nace classification	Weight	Change in %			
		June/ May	May/ April	q-o-q (1)	y-o-y (2)
46 Wholesale trade, except for motor vehicles and motorcycles	1000	1.7	-1.3	-0.4	-0.8
H Transportation and storage	1000	3.1	-2.2	-1.1	0.2
J Information and communication	1000	1.2	0.6	-0.2	-1.7
L Real estate activities	1000	0.6	0.0	0.4	0.6
M+N Business support activities	1000	1.4	-0.9	0.0	0.4
<i>M Professional, scientific and technical activities</i>	579	0.6	-0.7	0.5	0.3
<i>N Administrative and support service activities</i>	421	2.4	-1.1	-0.5	0.6

(1) Quarter-on-quarter: last three months / previous three months

(2) Year-on-year: last three months / same three months of previous year

The codes correspond to different levels of aggregation of the NACE classification.

Source: INSEE

New increase in information and communication

In June, the turnover increased once again in *information and communication* (+1.2% after +0.6% in May). It went up in *computer programming, consultancy and related activities* (+2.7%) and in *telecommunications* (+1.7%). By contrast, it declined in *motion picture, video and television programme production* (-1.2%) and in *information service activities* (-0.9%). It was almost stable in *programming and broadcasting activities* (+0.2%) and in *publishing activities* (+0.1%).

The turnover of *information and communication* decreased slightly over the last three months (-0.2%, q-o-q) and strongly over the year (-1.7%, y-o-y).

Recover in business support activities

In June, the turnover recovered in *business support activities* (+1.4% after -0.9% in May). The turnover in *administrative and support service activities* rose (+2.4%) significantly, in particular in *office administrative, office support and other business support activities* (+3.0%), in *employment activities* (+4.1%) and in *services to buildings and landscape activities* (+3.2%). The turnover increased more moderately in the *professional, scientific and technical activities* (+0.6%): it rose in *architectural and engineering activities...* (+1.3%) and in *legal and accounting activities* (+1.6%).

The turnover in business support activities remained steady over the last three months (0.0%, q-o-q) and increased mildly over the year (+0.4%, y-o-y).

• Revisions

The change in May was revised by +0.2 point in *information and communication*. Initially calculated at +0.4%, the turnover was revised at +0.6%. The change was revised by -0.1 point in the *wholesale trade, except for motor vehicles and motorcycles* and by +0.1 point in *real estate activities*. It remained unchanged in the *transportation and storage* and in *business support activities*.

Variation of the turnover in the wholesale trade and business services


SA-WDA value, Base year 2010

Nace Classification	Weight	June 2014	Variation en %		
			June/ May	May/ April	q-o-q (1)
46 Wholesale trade, except for motor vehicles and motorcycles	1000	110.9	1.7	-1.3	-0.4
461 Wholesale on a fee or contract basis	152	119.3	1.3	-0.1	1.4
462 Wholesale of agricultural raw materials and live animals	54	117.8	4.9	-5.3	-5.4
463 Wholesale of food, beverages and tobacco	170	113.6	2.1	-1.1	0.9
464 Wholesale of household goods	207	106.9	1.3	-1.0	0.3
465 Wholesale of information and communication equipment	61	98.8	-3.5	1.7	-3.3
466 Wholesale of other machinery, equipment and supplies	125	113.2	2.8	-3.0	-1.0
467 Other specialised wholesale	197	106.4	1.9	-1.3	-1.3
469 Non specialised wholesale trade	34	113.0	1.1	-0.7	1.3
H Transportation and storage	1000	108.2	3.1	-2.2	-1.1
49 Land transport and transport via pipelines	407	110.6	4.9	-2.9	-1.9
50 Water transport	73	110.8	0.8	-1.8	0.5
51 Air transport	91	101.4	-2.1	1.6	-1.2
52 Warehousing and support activities for transportation	360	108.1	2.2	-1.8	-0.8
53 Postal and courier activities	69	100.7	7.2	-5.6	-0.3
J Information and communication	1000	103.9	1.2	0.6	-0.2
58 Publishing activities	158	103.2	0.1	-0.1	-0.4
59 Motion picture, video and television programme production...	76	103.1	-1.2	1.3	-0.1
60 Programming and broadcasting activities	61	111.3	0.2	2.6	4.7
61 Telecommunications	396	94.6	1.7	1.6	-0.8
62 Computer programming, consultancy and related activities	251	116.3	2.7	-1.2	-0.4
63 Information service activities	58	109.9	-0.9	1.6	-0.3
L Real estate activities	1000	103.5	0.6	0.0	0.4
681 Buying and selling of own real estate	96	88.4	-0.3	1.4	-2.6
682 Renting and operating of own or leased real estate	691	105.9	0.8	-0.2	0.9
683 Real estate activities on a fee or contract basis	213	102.7	0.6	-0.2	0.1
M+N Business support activities	1000	110.9	1.4	-0.9	0.0
M Professional, scientific and technical activities	579	110.5	0.6	-0.7	0.5
69 Legal and accounting activities	90	107.3	1.6	-1.0	-0.2
70 Activities of head offices...	219	116.4	0.2	-0.8	0.8
71 Architectural and engineering activities...	151	108.4	1.3	-0.7	0.6
72 Scientific research and development	26	105.1	0.6	-2.8	1.0
73 Advertising and market research	68	102.3	-0.4	0.0	-0.3
74 Other professional, scientific and technical activities	19	111.3	-1.1	1.9	0.4
75 Veterinary activities	6	113.9	1.1	-0.5	0.1
N Administrative and support service activities	421	111.5	2.4	-1.1	-0.5
77 Rental and leasing activities	98	109.3	0.1	-0.8	-0.5
78 Employment activities	80	109.7	4.1	-3.2	-1.2
79 Travel agency, tour operator...	42	102.2	1.4	-0.2	-1.8
80 Security and investigation activities	21	116.4	2.9	1.6	-0.1
81 Services to buildings and landscape activities	50	112.3	3.2	-1.1	0.0
82 Office administrative, office support and other business support activities	131	116.2	3.0	-0.7	-0.2

(1) Quarter-on-quarter: last three months / previous three months.

Source: INSEE

For further information :

- Complementary data (long series) and metadata (methodology, linked internet pages...) are available on the HTML page of the index : <http://www.insee.fr/themes/info-rapide.asp?id=95>
- Historical data are available on BDM : [G1418](#), [G1421](#), [G1423](#), [G1424](#), [G1426](#).
- Press contact : bureau-de-presse@insee.fr
-  Follow us on [Twitter@InseeFr_News](https://twitter.com/InseeFr_News) (lien : https://twitter.com/InseeFr_News)

Next publication : September 30th 2014