

Informations *Rapides*

30 janvier 2015 - n° 25



■ Turnover in the wholesale trade and business services - November 2014

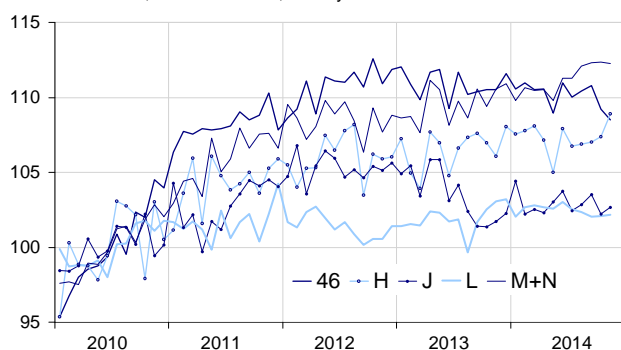
In November 2014, the turnover increased in transportation and storage but decreased in the wholesale trade

Every index in this issue is in value (tax excluded), seasonally and working day adjusted (SA-WDA). The commentary shows variations of subsections by decreasing contribution. The contribution of a subsection depends on the extent of the change and on its weight.

In November 2014, the turnover increased in *transportation and storage* (+1.4%) and in *information and communication* (+0.4%). It held almost steady in *real estate activities* (+0.1%) and in *business support activities* (−0.1%). Conversely, it decreased in the *wholesale trade, except for motor vehicles and motorcycles* (−0.6%).

Wholesale trade and business services

Turnover indices, SA-WDA value, Base year 2010



Source: INSEE

Increase in transportation and storage

In November, the turnover of *transportation and storage* improved strongly (+1.4%) after a slight increase in October (+0.3%). It shot up in *air transport* (+18.1%) bouncing back to its August's level after the dramatic drop of September. It also increased in *land transport and transport via pipelines* (+0.7%), in *water transport* (+1.6%) and in *postal and courier activities* (+0.5%). Conversely, it fell in *warehousing and support activities for transportation* (−1.1%).

The turnover of *transportation and storage* went up over the last three months (+0.6%) as well as over the year (+0.8%).

Decrease in the wholesale trade, except for motor vehicles and motorcycles

In November, the turnover of the *wholesale trade, except for motor vehicles and motorcycles* went on declining (−0.6% after −1.4% in October). It fell in *other specialised wholesale* (−2.0%), in the *wholesale of agricultural raw materials and live animals* (−3.1%), in the *wholesale of other machinery, equipment and supplies* (−0.9%) and in the *wholesale of food, beverages and tobacco* (−0.5%). On the contrary, it bounced back in the *wholesale of information and communication equipment* (+2.4%).

The turnover of the wholesale trade declined over the last three months (−0.9%) but also over the year (−0.9%).

Near stability in real estate activities

The turnover of *real estate activities* remained almost steady in November (+0.1%) as in October. It declined over the last three months (−0.5%) but also over the year (−0.3%).

Variation of the turnover in the wholesale trade and business services

SA-WDA value, Base year 2010

Nace classification	Weight	Change in %			
		Nov./ Oct.	Oct./ Sept.	q-o-q (1)	y-o-y (2)
46 Wholesale trade, except for motor vehicles and motorcycles	1000	−0.6	−1.4	−0.9	−0.9
H Transportation and storage	1000	1.4	0.3	0.6	0.8
J Information and communication	1000	0.4	−1.2	−0.2	1.3
L Real estate activities	1000	0.1	0.1	−0.5	−0.3
M+N Business support activities	1000	−0.1	0.0	0.7	1.9
M Professional, scientific and technical activities	579	−0.2	0.2	1.2	1.8
N Administrative and support service activities	421	0.2	−0.2	0.0	2.1

(1) Quarter-on-quarter: last three months / previous three months

(2) Year-on-year: last three months / same three months of previous year

The codes correspond to different levels of aggregation of the NACE classification.

Source: INSEE

Increase in information and communication

In November, the turnover of *information and communication* rose slightly (+0.4%) after a fall in October (−1.2%). It rebounded in *telecommunications* (+1.1%) and in *programming and broadcasting activities* (+1.2%). On the contrary, it dropped slightly in *information service activities* (−0.3%). It held steady in *computer programming, consultancy and related activities* and almost steady in *motion picture, video and television programme production* (+0.1%) as well as in *publishing activities* (−0.1%).

The turnover of *information and communication* was slightly down over the last three months (−0.2%) but grew over the year (+1.3%).

Near stability in business support activities

The turnover of *business support activities* held almost steady in November (−0.1%) after a stability in October. It decreased slightly in *professional, scientific and technical activities* (−0.2%): it diminished in *advertising and market research* (−2.3%) and in *activities of head offices* (−0.4%), while it increased in *architectural and engineering activities* (+0.6%).

The turnover improved slightly in *administrative and support service activities* (+0.2%): it rose in *rental and leasing activities* (+1.3%), in *office administrative, office support and other business support activities* (+0.4%) and in *services to buildings and landscape activities* (+0.6%), but fell in *employment activities* (−1.4%).

The turnover in *business support activities* improved over the last three months (+0.7%) and more significantly over the year (+1.9%).

• Revisions

The change in October was revised by +0.3 points in *real estate activities*. Initially calculated at −0.2%, it was revised at +0.1%. That same month, the change was revised by −0.1 points in the *wholesale trade, except for motor vehicles and motorcycles* and in *business support activities*. It remained unchanged in *transportation and storage* and in *information and communication*.

Variation of the turnover in the wholesale trade and business services


SA-WDA value, Base year 2010

Nace Classification	Weight	Nov. 2014	Change in %		
			Nov./ Oct.	Oct./ Sept.	q-o-q (1)
46 Wholesale trade, except for motor vehicles and motorcycles	1000	108.5	−0.6	−1.4	−0.9
461 Wholesale on a fee or contract basis	152	117.0	0.0	−1.7	−0.3
462 Wholesale of agricultural raw materials and live animals	54	110.5	−3.1	−1.0	−4.5
463 Wholesale of food, beverages and tobacco	170	110.9	−0.5	−1.2	−0.3
464 Wholesale of household goods	207	107.1	0.1	0.2	0.1
465 Wholesale of information and communication equipment	61	99.7	2.4	−3.7	−0.9
466 Wholesale of other machinery, equipment and supplies	125	111.4	−0.9	−0.5	−0.2
467 Other specialised wholesale	197	101.6	−2.0	−3.2	−2.1
469 Non specialised wholesale trade	34	109.2	−0.5	−1.7	−2.0
H Transportation and storage	1000	108.9	1.4	0.3	0.6
49 Land transport and transport via pipelines	407	108.6	0.7	−1.3	0.5
50 Water transport	73	118.9	1.6	1.2	4.7
51 Air transport	91	110.5	18.1	9.5	−8.9
52 Warehousing and support activities for transportation	360	108.8	−1.1	0.4	2.3
53 Postal and courier activities	69	99.0	0.5	−0.7	−0.1
J Information and communication	1000	102.7	0.4	−1.2	−0.2
58 Publishing activities	158	104.0	−0.1	0.3	−0.5
59 Motion picture, video and television programme production...	76	104.7	0.1	0.3	2.6
60 Programming and broadcasting activities	61	107.6	1.2	−1.4	1.6
61 Telecommunications	396	91.9	1.1	−3.0	−1.2
62 Computer programming, consultancy and related activities	251	115.7	0.0	0.1	0.4
63 Information service activities	58	108.2	−0.3	−2.4	−1.3
L Real estate activities	1000	102.2	0.1	0.1	−0.5
681 Buying and selling of own real estate	96	83.4	0.6	8.6	−3.2
682 Renting and operating of own or leased real estate	691	105.2	0.1	−0.5	−0.4
683 Real estate activities on a fee or contract basis	213	100.8	−0.1	−1.0	0.1
M+N Business support activities	1000	112.3	−0.1	0.0	0.7
M Professional, scientific and technical activities	579	112.6	−0.2	0.2	1.2
69 Legal and accounting activities	90	107.6	0.4	0.4	−0.9
70 Activities of head offices...	219	119.7	−0.4	−0.4	2.1
71 Architectural and engineering activities...	151	111.2	0.6	0.7	0.9
72 Scientific research and development	26	103.6	−0.8	−1.6	0.6
73 Advertising and market research	68	101.9	−2.3	2.0	1.3
74 Other professional, scientific and technical activities	19	114.3	0.1	0.6	1.7
75 Veterinary activities	6	115.4	−0.4	−0.9	1.1
N Administrative and support service activities	421	111.9	0.2	−0.2	0.0
77 Rental and leasing activities	98	111.0	1.3	−0.8	0.2
78 Employment activities	80	108.3	−1.4	−0.1	0.5
79 Travel agency, tour operator...	42	104.7	0.1	−1.9	−0.7
80 Security and investigation activities	21	113.3	−1.1	−2.0	−0.8
81 Services to buildings and landscape activities	50	112.2	0.6	−0.4	1.3
82 Office administrative, office support and other business support activities	131	116.6	0.4	0.9	−0.5

(1) Quarter-on-quarter: last three months / previous three months.

Source: INSEE

For further information :

- Complementary data (long series) and metadata (methodology, linked internet pages, etc.) are available on the web page of the index: <http://www.insee.fr/fr/themes/info-rapide.asp?id=95>
- Historical data are available on BDM: [G1418](#), [G1421](#), [G1423](#), [G1424](#), [G1426](#).
- Press contact: bureau-de-presse@insee.fr
-  Follow us on [Twitter@InseeFr_News](https://twitter.com/InseeFr_News) (lien : https://twitter.com/InseeFr_News)

Next publication : February 27th 2015