

Informations *Rapides*

27 janvier 2015 - n° 19



■ Quarterly business survey in the building crafts sector - January 2015

In January 2015, the business prospects remains deteriorated in the building craft sector

According to the business managers surveyed in January 2015, the economic outlook climate stays very deteriorated in the building crafts sector.

Activity is considered deteriorated

In January 2015, more building craftsmen than in October 2014 indicate a fall in their activity in the recent period. As in October, they stay pessimistic about their expected activity for the next few months. The corresponding balances of opinion are well below their long-term average.

The craftsmen's opinion on the overall change in their sector remains very negative, with a balance far below its long-term average.

Increased pessimism about workforce

More craftsmen than in October declare a fall in their staff size in the recent period and for the next few months. The corresponding balances of opinion are below their long-term average.

Less than one out of three companies has recruiting problems

Recruiting problems have concerned a few less than one firm out of three. This proportion remains inferior to its long-term average. The rate of businesses training apprentices has increased slightly at 37%, towards its long-term average (38%).

Building crafts sector economic outlook

Balances of opinion, in %, SA

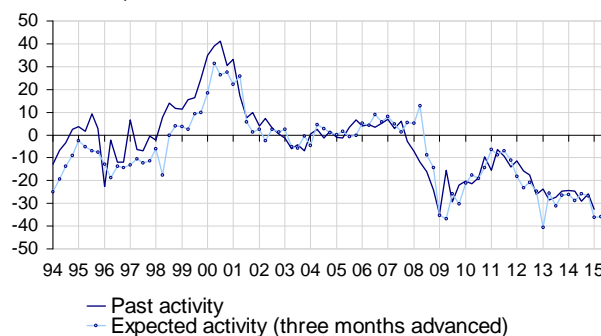
	Mean*	April 14	July 14	Oct. 14	Jan. 15
Past activity	-5	-25	-29	-26	-33
Expected activity	-9	-26	-27	-36	-36
General business outlook	-21	-39	-43	-50	-51
Past employment	-3	-10	-10	-7	-14
Expected employment	-4	-10	-12	-12	-15
Recruiting problems (in %)	42	32	28	30	30
Apprentice training (in %)	38	39	36	35	37

* Mean since October 1990.

Source: French business survey, building crafts sector - Insee

Activity tendency in the building crafts sector

Balances of opinion, in %, SA



For further information:

The balance of opinion is calculated as the difference between the percentage of responses «increase» and the percentage of responses «decrease».

- Additional information (long series, methodology, links, etc.) is available on the web page of this indicator: <http://www.insee.fr/en/themes/info-rapide.asp?id=59>
- Historical data are available on the BDM : [G1269](#), [G1271](#).
- Press contact: bureau-de-presse@insee.fr
- Follow us on [@Twitter @InseeFr_News](https://twitter.com/InseeFr_News): https://twitter.com/InseeFr_News

Next publication: 27 04 2015 at 12h00