

Informations *Rapides*

10 février 2015 - n° 29

Principaux indicateurs



■ Industrial Production Indices – December 2014

In December 2014, manufacturing output bounced back (+1.2%)

Please note: all the series are seasonally (SA) and working-day adjusted (WDA).

The commentary shows variations of subsections by decreasing contribution. The contribution of a subsection depends on the extent of the change and on its weight.

In December 2014, **manufacturing output** bounced back (+1.2%, after -0.5% in November), as in **industrial production as a whole** (+1.5% after -0.2% in November). This rebound affected all branches.

Manufacturing output remained almost stable over the last quarter of 2014 (+0.1%)

Over the last quarter of 2014, output remained almost stable in the manufacturing sector (+0.1% q-o-q), while it shrank slightly in industry as a whole (-0.4%).

Output declined markedly in *mining, quarrying, energy and water supply* (-2.9%), in the *manufacture of transport equipment* (-2.5%) and more moderately in the *manufacture of food products and beverages* (-0.5%). Conversely, output increased in the *manufacture of electrical and electronic equipment; machine equipment* (+1.2%), to a lesser extent in *other manufacturing* (+0.3%), and more strongly in the *manufacture of coke and refined petroleum products* (+4.2%).

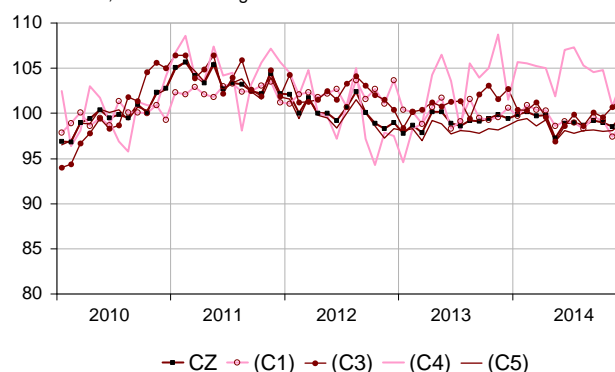
Over the year, industrial production declined

Manufacturing output of the last quarter of 2014 diminished compared to the same quarter of 2013 (-0.5% y-o-y). Overall industrial output decreased more significantly (-1.3% y-o-y).

Output fell sharply in *mining, quarrying, energy and water supply* (-4.8%), in the *manufacture of electrical and electronic equipment; machine equipment* (-1.7%), in the *manufacture of transport equipment* (-1.9%) and in the *manufacture of food products and beverages* (-1.3%). It remained almost stable in *other manufacturing* (-0.1%). On the contrary, output soared in the *manufacture of coke and refined petroleum products* (+14.0%).

Monthly Industrial Production Indices

2010 based, SA-WDA changes in %



Legend: CZ: Manufacturing - (C1): Manufacture of food products and beverages - (C3): Electrical and electronic equipment; machine equipment - (C4): Manufacture of transport equipment - (C5): Other manufacturing
Sources: Insee, SSP, SOeS

Variation of the Industrial Production

2010 based, SA-WDA changes in %

NA : A10, (A17)	Dec. / Nov.	Nov. / Oct.	Q-o-Q change (1)	Year on year change (2)
BE: INDUSTRY	1.5	-0.2	-0.4	-1.3
CZ: Manufacturing	1.2	-0.5	0.1	-0.5
(C1): Manufacture of food products and beverages	1.5	-1.8	-0.5	-1.3
(C2): Manufacture of coke and refined petroleum products	3.4	-4.8	4.2	14.0
(C3): Electrical and electronic equipment; machine equipment	1.2	1.1	1.2	-1.7
(C4): Manufacture of transport equipment	2.9	-3.8	-2.5	-1.9
(C5): Other manufacturing	0.8	0.1	0.3	-0.1
(DE): Mining and quarrying; energy; water supply; waste management	2.8	1.0	-2.9	-4.8
FZ: CONSTRUCTION	0.4	-1.1	-1.2	-3.6

(1) Last three months / previous three months
(2) Last three months / same three months of previous year
The codes correspond to the level of aggregation A 10 (A 17) of the "NA" aggregate classification based on NAF rev.2.
Sources: INSEE, SSP, SOeS

Variation of the Industrial Production

2010 based, SA-WDA changes in %

NA : A10, (A17), [A38 ou A64]	Dec. 2014	Dec. / Nov.	Nov. / Oct.	Quarter on quarter change
BE: INDUSTRY	98.8	1.5	-0.2	-0.4
CZ: Manufacturing	99.7	1.2	-0.5	0.1
(C1): Man. of food products and beverages	98.9	1.5	-1.8	-0.5
(C2): Man. of coke and refined petroleum products	87.7	3.4	-4.8	4.2
(C3): Electrical and electronic equipment; machine equipment	101.9	1.2	1.1	1.2
[CI] Man. of computer, electronic and optical products	102.4	1.9	-0.4	-0.7
[CJ] Man. of electrical equipment	93.7	0.6	2.8	1.9
[CK] Man. of machinery and equipment n.e.c. (1)	106.7	1.2	1.1	1.8
(C4): Man. of transport equipment	103.7	2.9	-3.8	-2.5
[CL1] Man. of motor vehicles, trailers and semi-trailers	90.0	1.0	0.0	-3.1
[CL2] Man. of other transport equipment	119.2	4.7	-6.9	-2.0
(C5): Other manufacturing	98.9	0.8	0.1	0.3
[CB] Man. of textiles, wearing apparel, leather and related products	96.8	3.6	-4.2	-2.4
[CC] Man. of wood and paper products; printing and reproduction of recorded media	87.4	2.0	-1.2	-2.6
[CE] Man. of chemicals and chemical products	112.4	0.4	1.4	0.0
[CF] Man. of basic pharmaceutical products and pharmaceutical preparations	102.8	0.7	1.8	5.9
[CG] Man. of rubber and plastics products, and other non-metallic mineral products	93.9	-0.5	0.3	-0.1
[CH] Man. of basic metals and fabricated metal products, except machinery and equipment	96.6	0.9	0.4	0.3
[CM] Other manufacturing; repair and installation of machinery and equipment	103.5	1.2	-0.5	0.4
(DE): Mining and quarrying; energy; water supply; waste management	94.8	2.8	1.0	-2.9
[BZ] Mining and quarrying	88.8	-0.9	-0.4	-2.5
[DZ] Electricity, gas, steam and air-conditioning supply	93.2	3.6	1.4	-3.4
[EZ] Water supply; sewerage, waste management and remediation	108.2	-1.1	-0.2	0.4
FZ: CONSTRUCTION	93.2	0.4	-1.1	-1.2
MIGs (2)				
Capital goods	102.7	1.6	-1.1	-0.6
Intermediate goods	97.0	0.9	0.6	-0.1
Consumer durables	93.4	-0.7	0.2	-1.8
Consumer non-durables	101.3	1.2	-1.3	1.2
Energy	94.2	3.0	0.7	-2.5

(1) n.e.c. : not elsewhere classifiable

(2) Main industrial groupings: definition in Commission regulation EC of June 14th 2007

Sources: Insee, SSP, SOeS

In December 2014, output increased in mining and quarrying; energy; water supply; waste management (+2.8%)...

In particular, output increased again in *electricity, gas, steam and air-conditioning supply* (+3.6% after +1.4%).

...in other manufacturing (+0.8%)...

Output improved significantly in the *manufacture of basic metals and fabricated metal products, except machinery and equipment* (+0.9%), in *other manufacturing; repair and installation of machinery and equipment* (+1.2%), in the *manufacture of wood and paper products; printing and reproduction of recorded media* (+2.0%) and in the *manufacture of textiles, wearing apparel, leather and related products* (+3.6%).

...in transport equipment (+2.9%)...

Output rose sharply in the *manufacture of other transport equipment* (+4.7%), in particular in *air and spacecraft machinery and railway rolling stock*. It increased moderately in the *manufacture of motor vehicles, trailers and semi-trailers* (+1.0%).

...in electrical and electronic equipment; machine equipment (+1.2%)...

In particular, output rose in the *manufacture of machinery and equipment n.e.c* (+1.2%) and in the *manufacture of computer, electronic and optical products* (+1.9%).

...in food products and beverages (+1.5%)...

Output increased in the *manufacture of food products and beverages* (+1.5 %), which is mostly due to the *manufacture of dairy products and drinks*.

...and in coke and refined petroleum products (+3.4%).

Output bounced back in the *manufacture of coke and refined petroleum products* (+3.4%), largely due to the *restarting of refinery after several months of maintenance*.

Revisions in November

Revisions of changes

(in point %)

	Nov. / Oct.	Oct. / Sept.	Sept. / Aug.	Q3 2014 / Q2 2014	2013 / 2012
Industry (BE)	0.10	-0.10	0.10	0.00	-0.01
raw serie	-0.21	-0.19	0.20	-0.04	0.00
SA-WDA coefficient	0.31	0.09	-0.10	0.04	-0.01
Manufacturing (CZ)	0.10	-0.10	0.10	0.07	0.02
raw serie	-0.21	-0.19	0.00	-0.03	0.00
SA-WDA coefficient	0.31	0.09	0.10	0.10	0.02

How to read it: in the manufacturing sector, the SA-WDA evolution between October 2014 and November 2014 is revised by +0.10 point: -0.21 is due to the raw data revision and +0.31 to the new calculation of the SA-WDA coefficients.

Sources: Insee, SSP, SOeS

Learn more:

- Complementary data (long series) and metadata (methodology, linked internet pages, etc.) are available on the web page of this index: <http://www.insee.fr/en/themes/info-rapide.asp?id=10>
- Historical data are available on the BDM: [G1397](#), [G1398](#), [G1400](#), [G1401](#), [G1411](#).
- Press contact: bureau-de-presse@insee.fr
- Follow us on [Twitter](#) @InseeFr_News: https://twitter.com/InseeFr_News

Next issue: March 10th 2015, 8:45 AM