

Informations Rapides

28 novembre 2014 - n° 276



■ Turnover in industry and construction – September 2014

In September 2014, the turnover went up in the manufacturing industry (+0.6%)

Every index in this issue is in value (tax excluded), seasonally and working day adjusted. The commentary shows variations of subsections by decreasing contribution. The contribution of a subsection depends on the extent of the change and on its weight.

In September 2014, the turnover grew in the **manufacturing industry** (+0.6%) after a stability in August (+0.1%). Exports bounced back (+2.0%).

In the **industry as a whole**, the turnover increased more slightly than the previous months (+0.3% after +0.5%).

Stability over the last three months (–0.1%)

Over the last quarter (q-o-q), the turnover flattened out in the **manufacturing industry** (–0.1%) as well as in the **industry as a whole** (–0.1%).

The turnover rose in *other manufacturing* (+0.7%), particularly in the *manufacture of chemicals and chemical products* (+1.4%) and in the *manufacture of basic metals and fabricated metal products* (+1.1%). It also went up in the *electrical and electronic equipment; machine equipment* (+0.6%). On the other hand, it fell in the *manufacture of food products and beverages* (–1.0%), in the *manufacture of transport equipment* (–1.2%) owed to a sharp decline in the *manufacture of other transport equipment* (–2.4%). It decreased too in the *manufacture of coke and refined petroleum products* (–0.8%).

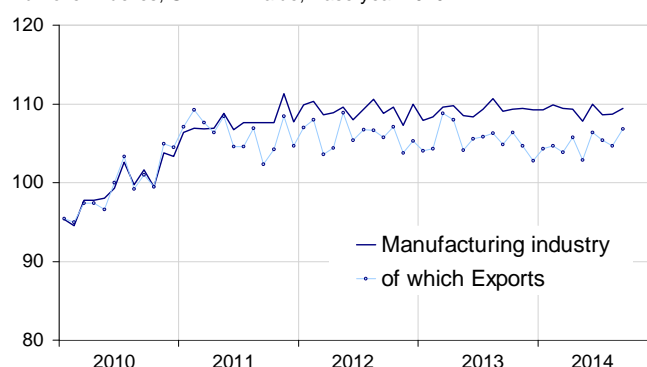
Decline compared to last year (–0.7%)

The turnover in the **manufacturing industry** went down in the third quarter of 2014 compared to the third quarter of 2013 (–0.7%).

Over this period, the turnover plunged in the *manufacture of coke and refined petroleum products* (–5.8%). It decreased in *other industries* (–0.5%) and in the *electrical and electronic equipment; machine equipment* (–0.7%). It fell slightly in the *manufacture of transport equipment* (–0.2%). It levelled off in the *manufacture of food products and beverages* (–0.1%).

Turnover in manufacturing industry

Turnover indexes, SA-WDA value, Base year 2010



Source: INSEE

Variation of the turnover in industry and construction

SA-WDA value, Base year 2010

NA: A 10, (A 17)	Weight**	Change in %			
		Sep./ Aug.	Aug./ July	q-o-q (1)	y-o-y (2)
BE: INDUSTRY	10000	0.3	0.5	–0.1	–0.8
CZ: MANUFACTURING INDUSTRY	8373	0.6	0.1	–0.1	–0.7
Of which Exports	2731	2.0	–0.7	0.6	0.0
(C1): Manufacture of food products and beverages	1647	1.0	0.2	–1.0	–0.1
(C2): Manufacture of coke and refined petroleum products	478	–0.6	4.4	–0.8	–5.8
(C3): Electrical and electronic equipment; machine equipment	1005	–0.8	–0.1	0.6	–0.7
(C4): Manufacture of transport equipment	1428	5.4	–3.4	–1.2	–0.2
(C5): Other manufacturing	3815	–0.6	0.9	0.7	–0.5
DE: Mining and quarrying; energy; water supply; waste management	1627	–1.6	2.2	–0.1	–0.9
FZ: CONSTRUCTION	10000	3.0	0.0	0.8	2.2

** 10000=B...E and F

(1) Quarter-on-quarter: last three months / previous three months

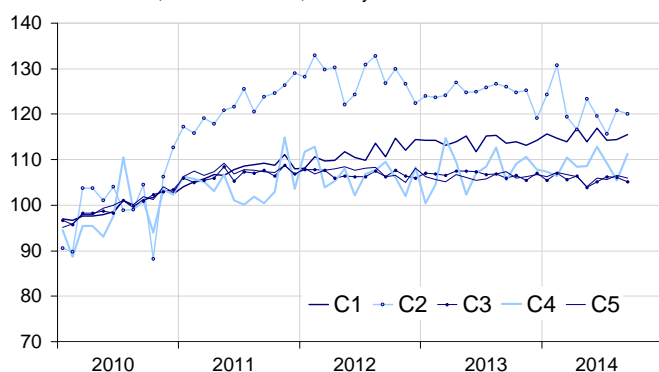
(2) Year-on-year: last three months / same three months of previous year

The codes correspond to different levels of aggregation of the NACE classification.

Source: INSEE

Turnover in manufacturing industry by sector

Turnover indexes, SA-WDA value, Base year 2010



Source: INSEE

Rebound in transport equipment (+5.4%)

In September, the turnover bounced back sharply in the *manufacture of transport equipment* (+5.4%) after a significant fall for two months in a row. It recovered dramatically in the *manufacture of other transport equipment* (+11.5%), whereas it dropped in the *manufacture of motor vehicles, trailers and semi-trailers* (−2.8%).

Rise in food products and beverages (+1.0%)

In September, the turnover grew for the second month in a row in the *manufacture of food products and beverages* (+1.0%, after +0.2% in August).

Decline in other industries (−0.6%)

In September, the turnover went down in *other industries* (−0.6%) after a rise in August (+0.9%). It dropped mainly in the *manufacture of rubber and plastics products, and other non-metallic mineral products* (−1.6%), in the *manufacture of wood and paper products* (−1.7%), in *other manufacturing: repair and installation...* (−0.8%) and in the *manufacture of basic pharmaceutical products and pharmaceutical preparations* (−1.5%).

Drop in equipments (−0.8%)

In September, the turnover declined in the *electrical and electronic equipment; machine equipment* (−0.8%) after an almost stability in August (−0.1%). It dropped in the *manufacture of electrical equipment* (−2.5%) and in the *manufacture of computer, electronic and optical products* (−0.6%). It flattened out in the *manufacture of machinery and equipment n.e.c.* (−0.1%).

Fall in coke and refined petroleum products (−0.6%)

The turnover in the *manufacture of coke and refined petroleum products* decreased in September (−0.6%) after a sharp rise in August.

• Revisions: −0.1 point in August in the manufacturing industry

In the *manufacturing industry*, the change of the turnover in August is revised slightly downwards: it fell at +0.1% instead of +0.2% published previously.

Indexes of turnover in industry and construction

SA-WDA, based year 2010

Industries:	Weight*	Sep. 2014	Change in %		
			Sep./ Aug.	Aug./ July	q-o-q (1)
BE: INDUSTRY	10000	109.1	0.3	0.5	−0.1
CZ: MANUFACTURING INDUSTRY	8373	109.4	0.6	0.1	−0.1
<i>of which Exports</i>	<i>2731</i>	<i>106.8</i>	<i>2.0</i>	<i>−0.7</i>	<i>0.6</i>
(C1): Man. of food products and beverages	1647	115.5	1.0	0.2	−1.0
<i>of which Exports</i>	<i>284</i>	<i>122.1</i>	<i>1.3</i>	<i>0.4</i>	<i>0.5</i>
(C2): Man. of coke and refined petroleum products	478	120.1	−0.6	4.4	−0.8
(C3): Electrical and electronic equipment; machine equipment	1005	105.2	−0.8	−0.1	0.6
<i>of which Exports</i>	<i>483</i>	<i>103.6</i>	<i>1.8</i>	<i>−3.2</i>	<i>0.4</i>
[CI] Man. of computer, electronic and optical products	269	100.2	−0.6	1.4	0.6
[CJ] Man. of electrical equipment	302	99.4	−2.5	0.2	1.8
[CK] Man. of machinery and equipment n.e.c.	434	112.3	−0.1	−1.1	0.0
(C4): Man. of transport equipment	1428	111.2	5.4	−3.4	−1.2
<i>of which Exports</i>	<i>693</i>	<i>98.4</i>	<i>4.6</i>	<i>−0.2</i>	<i>−2.4</i>
[CL1] Man. of motor vehicles, trailers and semi-trailers	689	92.1	−2.8	6.0	0.5
[CL2] Man. of other transport equipment	739	128.9	11.5	−9.3	−2.4
(C5): Other manufacturing	3815	106.0	−0.6	0.9	0.7
<i>of which Exports</i>	<i>1213</i>	<i>106.6</i>	<i>−0.6</i>	<i>−0.2</i>	<i>1.7</i>
[CB] Man. of textiles, wearing apparel, leather and related products	191	108.8	−0.6	0.8	−0.7
[CC] Man. of wood and paper products; printing and reproduction of recorded media	427	101.6	−1.7	1.8	1.1
[CE] Man. of chemicals and chemical products	706	108.5	0.6	0.5	1.4
[CF] Man. of basic pharmaceutical products and pharmaceutical preparations	322	99.8	−1.5	0.4	0.9
[CG] Man. of rubber and plastics products, and other non-metallic mineral products	620	101.5	−1.6	0.8	−0.8
[CH] Man. of basic metals and fabricated metal products, except machinery and equipment	900	106.0	−0.1	0.7	1.1
[CM] Other manufacturing: repair and installation of machinery and equipment	649	112.6	−0.8	1.6	0.7
DE: Mining and quarrying; energy, water supply, sewerage, waste management	1627	107.4	−1.6	2.2	−0.1
[BZ] Mining and quarrying	69	103.8	1.0	−1.0	−1.6
[DZ] Electricity, gas, steam and air-conditioning supply	1216	107.9	−1.7	2.6	−0.9
[EZ] Water supply; sewerage, waste management and remediation	342	106.2	−1.9	1.2	2.8
FZ: CONSTRUCTION	10000	110.8	3.0	0.0	0.8

** 10000=B...E and F

(1) Quarter-on-quarter: last three months / previous three months

Source: INSEE

Measure of variations' revisions

(in point %)

	Aug./ July	July/ June	June/ May	Q2 2014/ Q1 2014	2013/ 2012
Industry (BE)	0.00	0.00	−0.19	−0.06	0.02
raw serie	0.00	0.00	0.00	0.00	0.00
SA-WDA coeff.	0.00	0.00	−0.19	−0.06	0.02
Manufacturing industry (CZ)	−0.09	0.00	0.00	0.00	0.00
raw serie	0.00	0.00	0.00	0.00	0.00
SA-WDA coeff.	−0.09	0.00	0.00	0.00	0.00

How to read it: in the manufacturing, the SA-WDA evolution between July and August 2014 is revised by −0.09 point, due to the new calculation of the SA-WDA.

Source: INSEE

For further information:

- Complementary data (long series) and metadata (methodology, linked internet pages, etc.) are available on the web page of this index: <http://www.insee.fr/fr/themes/info-rapide.asp?id=53>
- Historical data are available on the BDM: [G1444](#), [G1445](#), [G1446](#), [G1447](#), [G1448](#) and [G1529](#)
- Press contact: bureau-de-presse@insee.fr
- Follow us on [Twitter](#) @InseeFr_News

Next issue: December 23rd, 2014