

Informations *Rapides*

7 novembre 2014 - n° 256

Main indicators



Industrial Production Indices – September 2014

In September 2014, manufacturing output increased (+0.6%)

In September 2014, **manufacturing output** increased (+0.6%), after a decrease in August (−0.5%). Output remained stable in **industrial production as a whole**, after a slight decrease of 0.2% in August 2014.

Manufacturing output rose slightly over the third quarter (+0.2%)...

During the third quarter (q-o-q), output rose slightly in the manufacturing sector (+0.2%), and a little more in industry as a whole (+0.5%).

Output increased in *mining, quarrying, energy and water supply* (+2.3%), in the *manufacture of electrical and electronic equipment; machine equipment* (+1.7%), in the *manufacture of transport equipment* (+1.0%), and in the *manufacture of coke and refined petroleum products* (+4.1%). Conversely, output went down in *other manufacturing* (−0.4%) and in the *manufacture of food products and beverages* (−0.5%).

...and remained almost stable over the year (+0.1%).

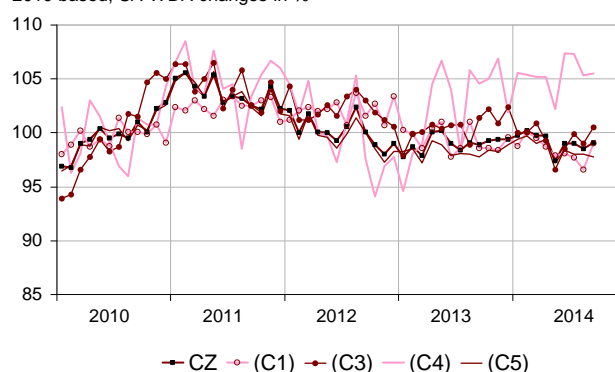
Manufacturing output of the last three months hold almost steady compared with the same months of previous year (+0.1% y-o-y). Output in industry as a whole also levelled off (−0.1%).

Output increased strongly in the *manufacture of transport equipment* (+3.0%). On the contrary, output decreased in the *manufacture of food products and beverages* (−1.6%), in *mining, quarrying, energy and water supply* (−0.8%) and in the *manufacture of electrical and electronic equipment; machine equipment* (−0.6%). Output hold steady in *other manufacturing* and in the *manufacture of coke and refined petroleum products*.

Please note: all the series are seasonally (SA) and working-day adjusted (WDA).

Monthly Industrial Production Indices

2010 based, SA-WDA changes in %



Legend: CZ: Manufacturing - (C1): Manufacture of food products and beverages - (C3): Electrical and electronic equipment; machine equipment - (C4): Manufacture of transport equipment - (C5): Other manufacturing
Sources: Insee, SSP, SOeS

Variation of the Industrial Production

2010 based, SA-WDA changes in %

| | Sept. / Aug. | Aug. / July | Q-o-Q change (1) | Year on year change (2) |
|--|--------------------|-------------------|------------------------|----------------------------------|
| NA : A10, (A17) | | | | |
| BE: INDUSTRY | 0.0 | −0.2 | 0.5 | −0.1 |
| CZ: Manufacturing | 0.6 | −0.5 | 0.2 | 0.1 |
| (C1): Manufacture of food products and beverages | 2.5 | −1.1 | −0.5 | −1.6 |
| (C2): Manufacture of coke and refined petroleum products | 5.8 | 5.1 | 4.1 | 0.0 |
| (C3): Electrical and electronic equipment; machine equipment | 1.5 | −0.9 | 1.7 | −0.6 |
| (C4): Manufacture of transport equipment | 0.2 | −1.9 | 1.0 | 3.0 |
| (C5): Other manufacturing | −0.2 | 0.0 | −0.4 | 0.0 |
| (DE): Mining and quarrying; energy; water supply; waste management | −2.2 | 0.5 | 2.3 | −0.8 |
| FZ: CONSTRUCTION | −2.3 | 1.2 | −0.3 | −1.7 |

(1) Last three months / previous three months

(2) Last three months / same three months of previous year

The codes correspond to the level of aggregation A 10 (A 17) of the "NA" aggregate classification based on NAF rev.2.

Sources: INSEE, SSP, SOeS

Variation of the Industrial Production

2010 based, SA-WDA changes in %

| NA : A10, (A17), [A38 ou A64] | Sept. 2014 | Sept. / Aug. | Aug. / July | Quarter on quarter change |
|---|-------------|--------------|-------------|---------------------------|
| BE: INDUSTRY | 98.3 | 0.0 | -0.2 | 0.5 |
| CZ: Manufacturing | 99.1 | 0.6 | -0.5 | 0.2 |
| (C1): Man. of food products and beverages | 99.0 | 2.5 | -1.1 | -0.5 |
| (C2): Man. of coke and refined petroleum products | 87.6 | 5.8 | 5.1 | 4.1 |
| (C3): Electrical and electronic equipment; machine equipment | 100.5 | 1.5 | -0.9 | 1.7 |
| [CI] Man. of computer, electronic and optical products | 103.9 | 2.0 | -2.7 | 1.5 |
| [CJ] Man. of electrical equipment | 89.3 | -0.3 | -2.2 | -0.8 |
| [CK] Man. of machinery and equipment n.e.c. (1) | 105.4 | 2.3 | 0.8 | 3.2 |
| (C4): Man. of transport equipment | 105.5 | 0.2 | -1.9 | 1.0 |
| [CL1] Man. of motor vehicles, trailers and semi-trailers | 92.2 | -4.2 | 7.0 | 1.7 |
| [CL2] Man. of other transport equipment | 120.5 | 4.2 | -8.8 | 0.5 |
| (C5): Other manufacturing | 97.8 | -0.2 | 0.0 | -0.4 |
| [CB] Man. of textiles, wearing apparel, leather and related products | 98.7 | 2.5 | -3.0 | -3.2 |
| [CC] Man. of wood and paper products; printing and reproduction of recorded media | 88.4 | -0.5 | -1.9 | 0.1 |
| [CE] Man. of chemicals and chemical products | 110.2 | -0.8 | -1.3 | 1.8 |
| [CF] Man. of basic pharmaceutical products and pharmaceutical preparations | 96.0 | 1.2 | 0.7 | -0.4 |
| [CG] Man. of rubber and plastics products, and other non-metallic mineral products | 94.2 | -1.6 | 0.9 | -0.5 |
| [CH] Man. of basic metals and fabricated metal products, except machinery and equipment | 94.5 | -1.9 | 1.2 | -0.8 |
| [CM] Other manufacturing; repair and installation of machinery and equipment | 104.1 | 2.7 | -0.5 | -0.7 |
| (DE): Mining and quarrying; energy; water supply; waste management | 95.1 | -2.2 | 0.5 | 2.3 |
| [BZ] Mining and quarrying | 90.8 | -3.5 | 3.9 | -0.5 |
| [DZ] Electricity, gas, steam and air-conditioning supply | 94.0 | -2.0 | 0.3 | 3.8 |
| [EZ] Water supply; sewerage, waste management and remediation | 104.9 | -2.5 | 0.6 | -5.8 |
| FZ: CONSTRUCTION | 93.2 | -2.3 | 1.2 | -0.3 |
| MIGs (2) | | | | |
| Capital goods | 103.2 | 1.2 | -1.1 | 0.8 |
| Intermediate goods | 95.4 | -1.6 | 0.6 | 0.0 |
| Consumer durables | 98.7 | 1.2 | 2.3 | -0.8 |
| Consumer non-durables | 100.0 | 2.5 | -1.6 | -0.5 |
| Energy | 94.4 | -1.6 | 0.6 | 2.4 |

(1) n.e.c. : not elsewhere classifiable

(2) Main industrial groupings: definition in Commission regulation

EC of June 14th 2007

Sources: Insee, SSP, SOeS

In September 2014, output went up sharply in the manufacture of food products and beverages (+2.5%)...

Output bounced back in the *manufacture of food products and beverages* (+2.5%, after -1.1%), particularly for dairy products and drinks.

... in the manufacture of electrical and electronic equipment; machine equipment (+1.5%)...

Output increased in the *manufacture of machinery and equipment n.e.c.* (+2.3%) and in the *manufacture of computer, electronic and optical products* (+2.0%).

... in the manufacture of coke and refined petroleum products (+5.8%).

In September, output increased substantially by 5.8% in the *manufacture of coke and refined petroleum products*.

Output slightly recovered in the manufacture of transport equipment (+0.2%)

Output went up sharply in the *manufacture of other transport equipment* (+4.2%) but declined to the same extent in the *manufacture of motor vehicles, trailers and semi-trailers* (-4.2%).

Output diminished in mining and quarrying; energy; water supply; waste management (-2.2%)...

In particular, output diminished in *electricity, gas, steam and air-conditioning supply* (-2.0%).

... and declined slightly in other manufacturing (-0.2 %).

Output went down in the *manufacture of basic metals and fabricated metal products, except machinery and equipment products* (-1.9%) and in the *manufacture of rubber and plastics products, and other non-metallic mineral products* (-1.6%). However, output went up significantly in *other manufacturing; repair and installation of machinery and equipment* (+2.7%).

Revisions in August

Revisions of changes


(in point %)

| | Aug. / July | July / June | June / May | Q2 2014 / Q1 2014 | 2013 / 2012 |
|---------------------------|--------------|-------------|-------------|-------------------|--------------|
| Industry (BE) | -0.20 | 0.00 | 0.00 | 0.07 | -0.01 |
| raw serie | -0.17 | 0.00 | 0.11 | 0.00 | -0.01 |
| SA-WDA coefficient | -0.03 | 0.00 | -0.11 | 0.07 | 0.00 |
| Manufacturing (CZ) | -0.30 | 0.10 | 0.00 | 0.00 | 0.01 |
| raw serie | -0.26 | 0.09 | -0.12 | 0.03 | 0.00 |
| SA-WDA coefficient | -0.04 | 0.01 | 0.12 | -0.03 | 0.01 |

How to read it: in the manufacturing sector, the SA-WDA evolution between July 2014 and August 2014 is revised by -0.30 point, -0.26 is due to the raw data revision and -0.04 to the new calculation of the SA-WDA.

Sources: Insee, SSP, SOeS

Learn more:

- Complementary data (long series) and metadata (methodology, linked internet pages, etc.) are available on the web page of this index: <http://www.insee.fr/en/themes/info-rapide.asp?id=10>
- Historical data are available on the BDM: [G1397](#), [G1398](#), [G1400](#), [G1401](#), [G1411](#).
- Press contact: bureau-de-presse@insee.fr
-  Follow us on [Twitter](#) @InseeFr_News: https://twitter.com/InseeFr_News

Next issue: December 10th 2014, 8:45 AM