

Informations *Rapides*

10 novembre 2015 - n° 272

Principaux indicateurs



■ Industrial Production Indices – September 2015

In September 2015, manufacturing output remained stable

Warnings: Please note: all the series are seasonally (SA) and working-day adjusted (WDA).

The commentary shows variations of subsections by decreasing contribution. The contribution of a subsection depends on the extent of the change and on its weight.

In September 2015, output stagnated in the **manufacturing industry** (0.0% after +2.2% in August), and remained virtually stable in the **industry as a whole** (+0.1% after +1.7% in August).

Manufacturing output was almost unchanged over the third quarter of 2015 (+0.1%)

Over the third quarter of 2015, output remained virtually stable in the manufacturing sector (+0.1% q-o-q) and increased modestly in the overall industry (+0.4%). Output increased in *mining, quarrying, energy and water supply* (+1.5%), in the *manufacture of transport equipment* (+1.9%), in the *manufacture of food products and beverages* (+0.6%), as well as in the *manufacture of coke and refined petroleum products* (+0.6%). Conversely, output decreased in the *manufacture of electrical and electronic equipment; machine equipment* (−0.9%). It held roughly stable in *other manufacturing* (−0.1%).

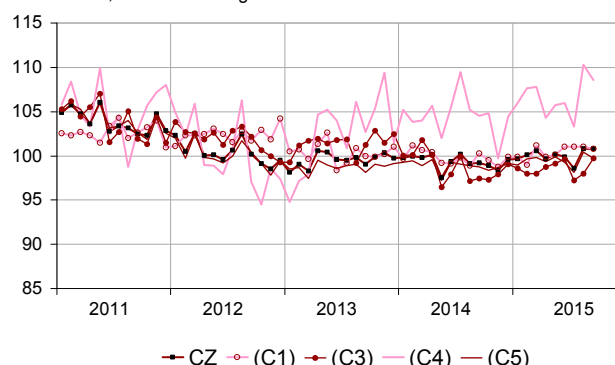
Over the year, manufacturing output increased (+0.6%)

Manufacturing output of the last three months increased compared to the same quarter of 2014 (+0.6% y-o-y); so did overall industrial output (+0.7% y-o-y).

Over the year, output increased moderately in *other manufacturing* (+0.5%). It rose more substantially in *mining, quarrying, energy and water supply* (+1.3%), in the *manufacture of food products and beverages* (+1.3%) and in the *manufacture of transport equipment* (+0.9%). It was virtually flat in the *manufacture of electrical and electronic equipment* (+0.1%). It went down in the *manufacture of coke and refined petroleum products* (−1.0%).

Monthly Industrial Production Indices

2010 based, SA-WDA changes in %



Legend: CZ: Manufacturing - (C1): Manufacture of food products and beverages - (C3): Electrical and electronic equipment; machine equipment - (C4): Manufacture of transport equipment - (C5): Other manufacturing
Sources: INSEE, SSP, SOeS

Variation of the Industrial Production

2010 based, SA-WDA changes in %

	Sept. / Aug.	Aug. / July	Q-o-Q change (1)	Year on year change (2)
NA : A10, (A17)				
BE: INDUSTRY	0.1	1.7	0.4	0.7
CZ: Manufacturing	0.0	2.2	0.1	0.6
(C1): Manufacture of food products and beverages	−0.2	0.0	0.6	1.3
(C2): Manufacture of coke and refined petroleum products	22.4	−0.5	0.6	−1.0
(C3): Electrical and electronic equipment; machine equipment	1.8	0.8	−0.9	0.1
(C4): Manufacture of transport equipment	−1.5	6.8	1.9	0.9
(C5): Other manufacturing	−0.7	2.3	−0.1	0.5
(DE): Mining and quarrying; energy; water supply; waste management	0.7	−0.9	1.5	1.3
FZ: CONSTRUCTION	−1.7	1.1	−0.3	−4.3

(1) Last three months / previous three months
(2) Last three months / same three months of previous year
The codes correspond to the level of aggregation A 10 (A 17) of the "NA" aggregate classification based on NAF rev.2.
Sources: INSEE, SSP, SOeS

Variation of the Industrial Production

2010 based, SA-WDA changes in %

NA : A10, (A17), [A38 ou A64]	Sept. 2015	Sept. / Aug.	Aug. / July	Quarter on quarter change
BE: INDUSTRY	100.2	0.1	1.7	0.4
CZ: Manufacturing	100.8	0.0	2.2	0.1
(C1): Man. of food products and beverages	100.8	-0.2	0.0	0.6
(C2): Man. of coke and refined petroleum products	96.5	22.4	-0.5	0.6
(C3): Electrical and electronic equipment; machine equipment	99.8	1.8	0.8	-0.9
[CI] Man. of computer, electronic and optical products	111.3	5.7	1.0	-0.5
[CJ] Man. of electrical equipment	91.0	1.7	1.5	-0.4
[CK] Man. of machinery and equipment n.e.c. (1)	98.3	-0.6	0.3	-1.4
(C4): Man. of transport equipment	108.6	-1.5	6.8	1.9
[CL1] Man. of motor vehicles, trailers and semi-trailers	94.7	-8.1	14.5	2.5
[CL2] Man. of other transport equipment	124.2	4.9	0.2	1.4
(C5): Other manufacturing	99.7	-0.7	2.3	-0.1
[CB] Man. of textiles, wearing apparel, leather and related products	97.0	-4.2	8.0	0.9
[CC] Man. of wood and paper products; printing and reproduction of recorded media	87.9	-1.9	2.4	0.7
[CE] Man. of chemicals and chemical products	110.0	-3.1	2.1	2.4
[CF] Man. of basic pharmaceutical products and pharmaceutical preparations	110.0	0.3	0.0	-0.8
[CG] Man. of rubber and plastics products, and other non-metallic mineral products	97.1	0.3	2.0	0.0
[CH] Man. of basic metals and fabricated metal products, except machinery and equipment	97.2	1.4	1.8	-0.7
[CM] Other manufacturing; repair and installation of machinery and equipment	101.9	-2.3	3.3	-0.8
(DE): Mining and quarrying; energy; water supply; waste management	97.5	0.7	-0.9	1.5
[BZ] Mining and quarrying	95.8	1.0	-1.0	-1.4
[DZ] Electricity, gas, steam and air-conditioning supply	95.1	1.2	-1.0	1.8
[EZ] Water supply; sewerage, waste management and remediation	115.3	-1.8	0.1	0.9
FZ: CONSTRUCTION	85.7	-1.7	1.1	-0.3
MIGs (2)				
Capital goods	103.0	-0.4	4.0	0.3
Intermediate goods	97.7	0.5	1.0	-0.3
Consumer durables	96.8	-2.3	1.4	-2.4
Consumer non-durables	103.6	-1.3	1.9	0.6
Energy	97.3	2.1	-0.9	1.6

(1) n.e.c.: not elsewhere classifiable

(2) Main industrial groupings: definition in Commission regulation EC of June 14th 2007

Sources: INSEE, SSP, SOeS

In September 2015, output surged in the manufacture of coke and refined petroleum products (+22.4%)

Output increased strongly in the *manufacture of coke and refined petroleum products* (+22.4%), as several refineries went back to full production.

Output went up further in the electrical and electronic equipment; machine equipment (+1.8%)

Output went up sharply in the *manufacture of computer, electronic and optical products* (+5.7% after +1.0% in August), and kept rising in the *manufacture of electrical equipment* (+1.7% after +1.5% in August). However, it declined slightly in the *manufacture of machinery and equipment n.e.c.* (-0.6% after +0.3%).

Output improved in mining and quarrying; energy; water supply; waste management (+0.7%)

Output recovered in *electricity, gas, steam and air-conditioning supply* (+1.2% after -1.0% in August).

Conversely, output fell back in other manufacturing (-0.7% after +2.3% in August)

Output dropped in *other manufacturing; repair and installation of machinery and equipment* (-2.3%), in the *manufacture of chemicals and chemical products* (-3.1%), as well as in the *manufacture of textiles, wearing apparel, leather and related products* (-4.2%). Conversely, output went up in the *manufacture of basic metals and fabricated metal products, except machinery and equipment* (+1.4%).

Output turned down in the manufacture of transport equipment (-1.5% after +6.8% in August)

Output dipped in the *manufacture of motor vehicles, trailers and semi-trailers* (-8.1% after a jump of +14.5% in August) whereas it rose strongly in the *manufacture of other transport equipment* (+4.9%).

Output went down slightly in the manufacture of food products and beverages (-0.2%)

Output diminished slightly in the *manufacture of food products and beverages* (-0.2%), in particular in the *manufacture of bakery and farinaceous products*.

Revisions in August 2015

Measure of variations' revisions

(in percentage points)

	Aug. / July	July / June	June / May	Q2 2015 / Q1 2015	2014 / 2013
Industry (BE)	0.04	0.11	-0.09	-0.05	0.22
raw serie	0.06	0.06	0.13	-0.04	0.20
SA-WDA coefficient	-0.02	0.05	-0.22	-0.01	0.02
Manufacturing (CZ)	0.01	-0.01	0.01	-0.02	0.28
raw serie	0.03	0.09	0.09	-0.07	0.25
SA-WDA coefficient	-0.02	-0.10	-0.08	0.05	0.03

Note of reading: in the manufacturing sector, the SA-WDA variation between July and August 2015 is revised by +0.01 points, +0.03 is due to the raw serie's revision and -0.02 to the new calculation of the SA-WDA..

Sources: INSEE, SSP, SOeS

Learn more:

- Complementary data (long series) and metadata (methodology, linked internet pages, etc.) are available on the web page of this index: <http://www.insee.fr/en/themes/info-rapide.asp?id=10>
- Historical data are available on the BDM: [G1397](#), [G1398](#), [G1400](#), [G1401](#), [G1411](#).
- Press contact: bureau-de-presse@insee.fr
- Follow us on [Twitter](#) @InseeFr_News: https://twitter.com/InseeFr_News

Next issue: December 10th 2015. 8:45 AM