

Informations Rapides

30 juillet 2014 - n° 179



■ Turnover in the wholesale trade and business services - May 2014

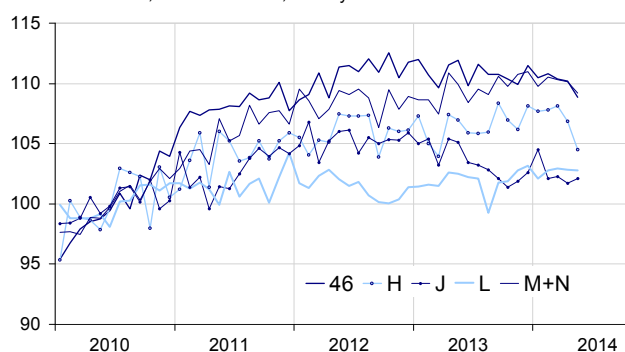
In May 2014, the turnover decreased in transportation and storage, in the wholesale trade and in business support activities

Every index in this issue is in value, seasonally and working day adjusted (SA-WDA). Bridging days (Fridays 2nd, 9th and 30th May) were considered like normal working days for SA-WDA treatment. The commentary shows variations of subsections by decreasing contribution. The contribution of a subsection depends on the extent of the change and on its weight.

In May 2014, the turnover decreased in *transportation and storage* (–2.2%), in the *wholesale trade, except for motor vehicles and motorcycles* (–1.2%) and in *business support activities* (–0.9%). On the contrary, it went up in *information and communication* (+0.4%). It held almost steady in *real estate activities* (–0.1%).

Wholesale trade and business services

Turnover indices, SA-WDA value, Base year 2010



Source : INSEE

Decrease in the wholesale trade, except for motor vehicles and motorcycles

In May, the turnover declined in the *wholesale trade, except for motor vehicles and motorcycles* (–1.2% after –0.2% in April). It decreased in the *wholesale of other machinery, equipment and supplies* (–2.8%), in the *wholesale of agricultural raw materials and live animals* (–5.1%), in the *wholesale of food, beverages and tobacco* (–1.5%) as well as in *other specialised wholesale* (–1.4%). On the other hand, it improved in the *wholesale of information and communication equipment* (+2.0%).

The turnover decreased over the last three months (–1.0%) and over the year (–1.1%, y-o-y).

Decrease in transportation and storage

In May, the turnover of *transportation and storage* dipped once more (–2.2% after –1.2% in April). It decreased in *land transport and transport via pipelines* (–2.3%), in *warehousing and support activities for transportation* (–2.6%), in *postal and courier activities* (–4.8%) and in *water transport* (–1.7%). Conversely, it grew in *air transport* (+1.8%).

The turnover of *transportation and storage* declined over the last three months (–1.3%, q-o-q), but improved slightly over the year (+0.4%, y-o-y).

Near-stability in real estate activities

The turnover of *real estate activities* remained almost steady in May (–0.1% after –0.1% in April). It rised very slightly over the last three months (+0.2%) and a little more over the year (+0.6%).

Variation of the turnover in the wholesale trade and business services

SA-WDA value, Base year 2010

Nace classification	Weight	Change in %			
		May/ April	April/ March	q-o-q (1)	y-o-y (2)
46 Wholesale trade, except for motor vehicles and motorcycles	1000	–1.2	–0.2	–1.0	–1.1
H Transportation and storage	1000	–2.2	–1.2	–1.3	0.4
J Information and communication	1000	0.4	–0.5	–1.0	–2.4
L Real estate activities	1000	–0.1	–0.1	0.2	0.6
M+N Business support activities	1000	–0.9	–0.1	–0.5	0.4
<i>M Professional, scientific and technical activities</i>	579	–0.7	0.5	0.1	0.4
<i>N Administrative and support service activities</i>	421	–1.0	–0.9	–1.3	0.4

(1) Quarter-on-quarter: last three months / previous three months

(2) Year-on-year: last three months / same three months of the previous year

The codes correspond to different levels of aggregation of the NACE classification.

Source: INSEE

Increase in information and communication

In May, the turnover increased slightly in *information and communication* (+0.4% after -0.5% in April). It went up in *telecommunications* (+1.0%), in *programming and broadcasting activities* (+2.8%), in *information service activities* (+1.5%), and in *motion picture, video and television programme production* (+1.3%). By contrast, it declined in *computer programming, consultancy and related activities* (-1.1%). It was almost stable in *publishing activities* (-0.1%).

The turnover of *information and communication* decreased over the last three months (-1.0%, q-o-q) and, to a greater extent, over the year (-2.4%, y-o-y).

Decrease in business support activities

In May, the turnover decreased in *business support activities* (-0.9% after -0.1% in April). The turnover declined in the *professional, scientific and technical activities* (-0.7%): in particular, it slid in *activities of head offices...* (-0.7%), in *architectural and engineering activities...* (-0.8%) and in *legal and accounting activities* (-1.2%). The turnover in *administrative and support service activities* declined as well (-1.0%), due to a strong decrease in *employment activities* (-3.4%) and to a moderate one in *rental and leasing activities* (-0.8%) and in *services to buildings and landscape activities* (-1.2%).

The turnover in *business support activities* declined over the last three months (-0.5%, q-o-q) but increased slightly over the year (+0.4%, y-o-y).

• Revisions

The change in April was revised by -0.6 point in *transportation and storage*, half of it due to the recalculation of seasonally and working day coefficients. Initially calculated at -0.6%, the turnover was revised at -1.2%. It was revised by -0.2 point in *information and communication* and in *business support activities*, and by -0.1 point in *real estate activities*. It remained unchanged in the *wholesale trade, except for motor vehicles and motorcycles*.

Variation of the turnover in the wholesale trade and business services


SA-WDA value, Base year 2010

Nace Classification	Weight	May 2014	Variation en %		
			May/April	April/March	q-o-q (1)
46 Wholesale trade, except for motor vehicles and motorcycles	1000	108.9	-1.2	-0.2	-1.0
461 Wholesale on a fee or contract basis	152	117.5	-0.1	1.0	-0.5
462 Wholesale of agricultural raw materials and live animals	54	112.2	-5.1	0.7	-7.2
463 Wholesale of food, beverages and tobacco	170	110.5	-1.5	0.9	-0.6
464 Wholesale of household goods	207	105.6	-0.5	0.3	-0.3
465 Wholesale of information and communication equipment	61	103.1	2.0	-2.8	-0.9
466 Wholesale of other machinery, equipment and supplies	125	110.0	-2.8	0.1	-1.2
467 Other specialised wholesale	197	103.9	-1.4	-2.3	-1.2
469 Non specialised wholesale trade	34	111.7	-0.7	1.1	2.3
H Transportation and storage	1000	104.5	-2.2	-1.2	-1.3
49 Land transport and transport via pipelines	407	105.2	-2.3	-3.2	-1.1
50 Water transport	73	110.2	-1.7	3.2	-0.9
51 Air transport	91	104.3	1.8	-0.2	-2.4
52 Warehousing and support activities for transportation	360	104.6	-2.6	-0.8	-0.8
53 Postal and courier activities	69	94.5	-4.8	4.6	-3.7
J Information and communication	1000	102.1	0.4	-0.5	-1.0
58 Publishing activities	158	103.2	-0.1	-1.2	1.2
59 Motion picture, video and television programme production...	76	104.5	1.3	-1.0	0.1
60 Programming and broadcasting activities	61	111.0	2.8	1.9	3.7
61 Telecommunications	396	92.3	1.0	0.3	-2.9
62 Computer programming, consultancy and related activities	251	112.1	-1.1	-1.2	-1.5
63 Information service activities	58	110.7	1.5	-1.9	0.4
L Real estate activities	1000	102.8	-0.1	-0.1	0.2
681 Buying and selling of own real estate	96	87.9	1.3	-3.0	-1.5
682 Renting and operating of own or leased real estate	691	105.0	-0.2	0.5	0.9
683 Real estate activities on a fee or contract basis	213	102.2	-0.2	-0.9	-1.5
M+N Business support activities	1000	109.2	-0.9	-0.1	-0.5
M Professional, scientific and technical activities	579	109.9	-0.7	0.5	0.1
69 Legal and accounting activities	90	105.5	-1.2	0.0	-0.8
70 Activities of head offices...	219	116.5	-0.7	0.6	0.7
71 Architectural and engineering activities...	151	106.8	-0.8	1.3	-0.9
72 Scientific research and development	26	104.6	-2.7	-0.1	3.0
73 Advertising and market research	68	102.7	0.0	-0.9	0.3
74 Other professional, scientific and technical activities	19	112.3	0.7	0.2	-0.8
75 Veterinary activities	6	112.4	-0.5	-0.3	0.0
N Administrative and support service activities	421	108.2	-1.0	-0.9	-1.3
77 Rental and leasing activities	98	109.1	-0.8	-0.2	-0.3
78 Employment activities	80	103.8	-3.4	-0.5	-2.6
79 Travel agency, tour operator...	42	100.8	-0.3	0.1	-2.3
80 Security and investigation activities	21	112.4	1.4	-2.1	-0.7
81 Services to buildings and landscape activities	50	108.3	-1.2	-0.8	-0.9
82 Office administrative, office support and other business support activities	131	111.9	-0.4	-1.9	-1.1

(1) Quarter-on-quarter: last three months / previous three months.

Source: INSEE

For further information :

- Complementary data (long séries) and metadata (methodology, linked internet pages...) are available on the HTML page of the index : <http://www.insee.fr/fr/themes/info-rapide.asp?id=95>
- Historical data are available on BDM : [G1418](#), [G1421](#), [G1423](#), [G1424](#), [G1426](#).
- Press contact : bureau-de-presse@insee.fr
-  Follow us on [Twitter@InseeFr](https://twitter.com/InseeFr) News (lien : <https://twitter.com/InseeFr> News)

Next publication : August 29th 2014