

■ Turnover in the wholesale trade and business services - April 2014

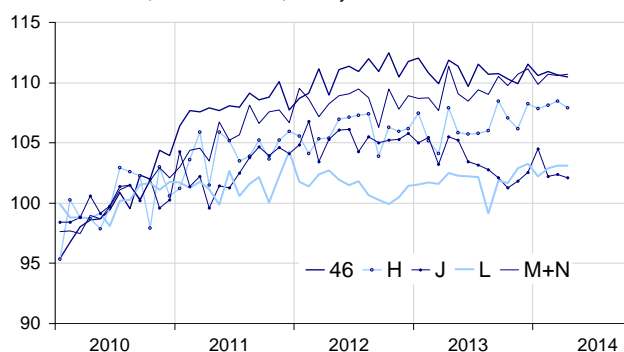
In April 2014, the turnover decreased in transportation and storage, in information and communication, and in the wholesale trade

Every index in this issue is in value, seasonally and working day adjusted.
The commentary shows evolutions of subsections by decreasing contributions. The contribution of a subsection depends on the extent of the evolution and on its weight.

In April 2014, the turnover decreased in *transportation and storage* (−0.6%). It went down slightly in *information and communication* (−0.3%) and in the *wholesale trade*, except for *motor vehicles and motorcycles* (−0.2%). It held steady in *real estate activities* and remained almost stable in *business support activities* (+0.1%).

Wholesale trade and business services

Turnover indices, SA-WDA value, Base year 2010



Source : INSEE

Slight decrease in the wholesale trade, except for motor vehicles and motorcycles

In April, the turnover declined slightly in the *wholesale trade*, except for *motor vehicles and motorcycles* (−0.2% after −0.2% in March). It decreased in the *other specialised wholesale trade* (−2.3%) and in the *wholesale of information and communication equipment* (−2.6%). Conversely, the turnover grew in the *wholesale on a fee or contract basis* (+1.0%), in the *wholesale of food, beverages and tobacco* (+0.6%), in the *wholesale of agricultural raw materials and live animals* (+0.9%) and in the *non-specialised wholesale trade* (+1.2%). The turnover of the *wholesale trade* held

steady over the last three months, and decreased slightly over the year (−0.2%, y-o-y).

Decrease in transportation and storage

In April, the turnover of *transportation and storage* declined (−0.6%, after +0.3% in March). It decreased in *land transport and transport via pipelines* (−2.4%) and more moderately in *air transport* (−0.3%). By contrast, it rose in *postal and courier activities* (+5.2%) and in *water transport* (+3.1%). It remained almost steady in *warehousing and support activities for transportation* (−0.1%).

The turnover of *transportation and storage* improved over the last three months (+0.7%, q-o-q), and, to a greater extent, over the year (+2.3%, y-o-y).

Stability in real estate activities

The turnover of *real estate activities* held steady in April (0.0% after +0.2% in March). It rised slightly over the last three months (+0.3%), and more sharply over the year (+1.1%).

Variation of the turnover in the wholesale trade and business services

SA-WDA value, Base year 2010

Nace classification	Weight	Change in %			
		April/March	March/Feb.	q-o-q (1)	y-o-y (2)
46 Wholesale trade, except for motor vehicles and motorcycles	1000	−0.2	−0.2	0.0	−0.2
H Transportation and storage	1000	−0.6	0.3	0.7	2.3
J Information and communication	1000	−0.3	0.2	−0.7	−2.4
L Real estate activities	1000	0.0	0.2	0.3	1.1
M+N Business support activities	1000	0.1	−0.1	0.1	1.3
<i>M Professional, scientific and technical activities</i>	579	0.5	−0.4	0.0	1.1
<i>N Administrative and support service activities</i>	421	−0.4	0.3	0.3	1.5

(1) Quarter-on-quarter: last three months / previous three months

(2) Year-on-year : last three months / same three months of the previous year

The codes correspond to different levels of aggregation of the NACE classification.

Source : INSEE

Slight decrease in information and communication

In April, the turnover dipped slightly in *information and communication* (−0.3% after +0.2% in March). It decreased in *publishing activities* (−1.0%), in *information service activities* (−1.9%), in *motion picture, video and television programme production* (−1.1%) and in *computer programming, consultancy and related activities* (−0.3%). By contrast, it went up in *programming and broadcasting activities* (+1.7%) and, to a lesser extent, in *telecommunications* (+0.3%).

The turnover of *information and communication* decreased over the last three months (−0.7%, q-o-q) and over the year (−2.4%, y-o-y).

Near-stability in business support activities

In April, the turnover levelled off in *business support activities* (+0.1% after −0.1% in March). The turnover climbed in the *professional, scientific and technical activities* (+0.5%): in particular, it went up in *architectural and engineering activities...* (+1.3%) and in *activities of head offices...* (+0.6%), but it declined in *advertising and market research* (−0.8%). Conversely, the turnover in *administrative and support service activities* declined (−0.4%): it decreased in *office administrative, office support and other business support activities* (−0.6%), *employment activities* (−0.6%) and *security and investigation activities* (−2.3%).

The turnover in *business support activities* remained almost stable over the last three months (+0.1%, q-o-q) but increased over the year (+1.3%, y-o-y).

• Revisions

The change in March was revised by −0.3 point in *transportation and storage*. Initially calculated at +0.6%, the turnover was revised at +0.3%. It was revised by −0.1 point in *real estate activities*. It remained unchanged in *information and communication*, in the *wholesale trade, except for motor vehicles and motorcycles* and in *business support activities*.

Variation of the turnover in the wholesale trade and business services


SA-WDA value, Base year 2010

Nace Classification	Weight	April 2014	Variation en %		
			April/ March	March /Feb.	q-o-q (1)
46 Wholesale trade, except for motor vehicles and motorcycles	1000	110.5	−0.2	−0.2	0.0
461 Wholesale on a fee or contract basis	152	117.6	1.0	0.2	−1.0
462 Wholesale of agricultural raw materials and live animals	54	119.2	0.9	−6.6	−0.2
463 Wholesale of food, beverages and tobacco	170	112.0	0.6	−0.1	−0.1
464 Wholesale of household goods	207	106.2	0.2	−1.1	1.0
465 Wholesale of information and communication equipment	61	101.2	−2.6	1.1	−0.6
466 Wholesale of other machinery, equipment and supplies	125	113.9	0.2	−0.7	1.0
467 Other specialised wholesale	197	105.9	−2.3	2.1	−1.2
469 Non-specialised wholesale trade	34	112.5	1.2	0.7	3.1
H Transportation and storage	1000	107.9	−0.6	0.3	0.7
49 Land transport and transport via pipelines	407	109.1	−2.4	1.9	1.4
50 Water transport	73	112.3	3.1	−3.4	0.4
51 Air transport	91	102.0	−0.3	−1.8	−3.0
52 Warehousing and support activities for transportation	360	108.7	−0.1	0.8	1.3
53 Postal and courier activities	69	99.8	5.2	−5.6	−1.7
J Information and communication	1000	102.1	−0.3	0.2	−0.7
58 Publishing activities	158	103.5	−1.0	2.8	−0.7
59 Motion picture, video and television programme production...	76	103.0	−1.1	0.8	0.5
60 Programming and broadcasting activities	61	107.4	1.7	0.7	2.7
61 Telecommunications	396	91.2	0.3	−1.5	−2.6
62 Computer programming, consultancy and related activities	251	115.2	−0.3	0.3	0.4
63 Information service activities	58	109.1	−1.9	1.0	−0.2
L Real estate activities	1000	103.1	0.0	0.2	0.3
681 Buying and selling of own real estate	96	86.3	−3.7	−1.0	−0.7
682 Renting and operating of own or leased real estate	691	105.6	0.7	0.2	1.0
683 Real estate activities on a fee or contract basis	213	102.6	−0.8	0.7	−1.7
M+N Business support activities	1000	110.7	0.1	−0.1	0.1
M Professional, scientific and technical activities	579	110.9	0.5	−0.4	0.0
69 Legal and accounting activities	90	107.1	0.1	−2.8	1.2
70 Activities of head offices...	219	117.4	0.6	0.8	0.4
71 Architectural and engineering activities...	151	107.7	1.3	−1.7	−2.4
72 Scientific research and development	26	108.4	0.2	2.7	3.5
73 Advertising and market research	68	102.8	−0.8	0.6	0.9
74 Other professional, scientific and technical activities	19	111.6	0.3	−1.1	−0.4
75 Veterinary activities	6	113.5	−0.3	0.3	1.0
N Administrative and support service activities	421	110.4	−0.4	0.3	0.3
77 Rental and leasing activities	98	110.7	0.2	0.3	0.7
78 Employment activities	80	108.4	−0.6	0.9	−0.6
79 Travel agency, tour operator...	42	101.9	0.6	−2.0	−0.4
80 Security and investigation activities	21	110.9	−2.3	−0.4	0.1
81 Services to buildings and landscape activities	50	110.1	−0.7	1.1	−0.3
82 Office administrative, office support and other business support activities	131	114.2	−0.6	0.4	0.8

(1) Quarter-on-quarter: last three months / previous three months.

Source: INSEE

For further information :

- Complementary data (long séries) and metadata (methodology, linked internet pages...) are available on the HTML page of the index : <http://www.insee.fr/fr/themes/info-rapide.asp?id=95>
- Historical data are available on BDM : [G1418](#), [G1421](#), [G1423](#), [G1424](#), [G1426](#).
- Press contact : bureau-de-presse@insee.fr
-  Follow us on [Twitter@InseeFr_News](https://twitter.com/InseeFr_News) (lien : https://twitter.com/InseeFr_News)

Next publication : July 30th 2014