

# Informations Rapides

10 avril 2015 - n° 83

Principaux indicateurs



## ■ Industrial Production Indices – February 2015

### In February 2015, manufacturing output was stable

Please note: all the series are seasonally (SA) and working-day adjusted (WDA).

The commentary shows variations of subsections by decreasing contribution. The contribution of a subsection depends on the extent of the change and on its weight.

In February 2015, **output** was stable in the **manufacturing industry** (0.0%, after -0.3% in January), as well as in **the industry as a whole** (0.0% after +0.3% in January).

#### Manufacturing output rose over the last three months (+0.6%)

Over the last three months, output rose in the manufacturing sector (+0.6% q-o-q) and more strongly in the industry as a whole (+1.3%, q-o-q).

Output improved in *mining, quarrying, energy and water supply* (+4.3%), in *other manufacturing* (+0.7%), in the *manufacture of transport equipment* (+2.4%) and in the *manufacture of coke and refined petroleum products* (+3.4%). It remained stable in the *manufacture of food products and beverages*. Conversely, output declined in the *manufacture of electrical and electronic equipment; machine equipment* (-0.8%).

#### Over the year, manufacturing output declined (-0.5%)

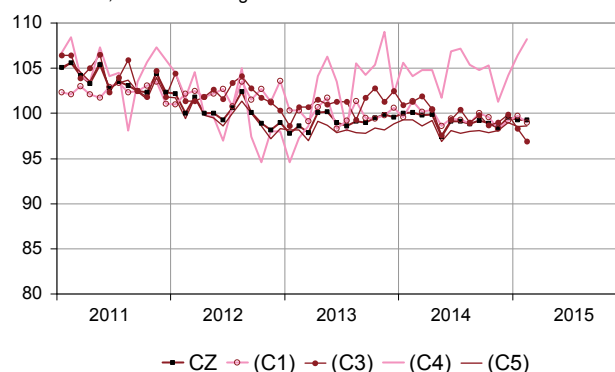
Manufacturing output of the last three months diminished compared to the same months of the previous year (-0.5% y-o-y). In contrast, overall industrial output increased (+0.3% y-o-y).

Output increased sharply in *mining, quarrying, energy and water supply* (+3.8%), in the *manufacture of transport equipment* (+2.2%) and more strongly in the *manufacture of coke and refined petroleum products* (+13.2%).

On the contrary, output went down in the *manufacture of electrical and electronic equipment* (-3.2%), in *other manufacturing* (-0.4%) and in the *manufacture of food products and beverages* (-1.2%).

#### Monthly Industrial Production Indices

2010 based, SA-WDA changes in %



Legend: CZ: Manufacturing - (C1): Manufacture of food products and beverages - (C3): Electrical and electronic equipment; machine equipment - (C4): Manufacture of transport equipment - (C5): Other manufacturing  
Sources: Insee, SSP, SOeS

#### Variation of the Industrial Production

2010 based, SA-WDA changes in %

NA : A10, (A17)	Feb. / Jan.	Jan. / Dec.	Q-o-Q change (1)	Year on year change (2)
<b>BE: INDUSTRY</b>	<b>0.0</b>	<b>0.3</b>	<b>1.3</b>	<b>0.3</b>
<b>CZ: Manufacturing</b>	<b>0.0</b>	<b>-0.3</b>	<b>0.6</b>	<b>-0.5</b>
(C1): Manufacture of food products and beverages	-0.7	0.5	0.0	-1.2
(C2): Manufacture of coke and refined petroleum products	3.5	1.3	3.4	13.2
(C3): Electrical and electronic equipment; machine equipment	-1.4	-1.6	-0.8	-3.2
(C4): Manufacture of transport equipment	1.7	2.1	2.4	2.2
(C5): Other manufacturing	0.1	-0.5	0.7	-0.4
(DE): Mining and quarrying; energy; water supply; waste management	0.3	2.6	4.3	3.8
<b>FZ: CONSTRUCTION</b>	<b>-2.2</b>	<b>-0.1</b>	<b>-1.4</b>	<b>-6.5</b>

(1) Last three months / previous three months

(2) Last three months / same three months of previous year

The codes correspond to the level of aggregation A 10 (A 17) of the "NA" aggregate classification based on NAF rev.2.

Sources: INSEE, SSP, SOeS

## Variation of the Industrial Production

2010 based, SA-WDA changes in %

NA : A10, (A17), [A38 ou A64]	Feb. 2015	Feb. / Jan.	Jan. / Dec.	Quarter on quarter change
<b>BE: INDUSTRY</b>	<b>99.0</b>	<b>0.0</b>	<b>0.3</b>	<b>1.3</b>
<b>CZ: Manufacturing</b>	<b>99.3</b>	<b>0.0</b>	<b>-0.3</b>	<b>0.6</b>
<b>(C1): Man. of food products and beverages</b>	<b>99.0</b>	<b>-0.7</b>	<b>0.5</b>	<b>0.0</b>
<b>(C2): Man. of coke and refined petroleum products</b>	<b>93.6</b>	<b>3.5</b>	<b>1.3</b>	<b>3.4</b>
<b>(C3): Electrical and electronic equipment; machine equipment</b>	<b>96.9</b>	<b>-1.4</b>	<b>-1.6</b>	<b>-0.8</b>
[CI] Man. of computer, electronic and optical products	95.5	-3.4	-3.4	-1.7
[CJ] Man. of electrical equipment	92.9	1.2	-2.0	1.6
[CK] Man. of machinery and equipment n.e.c. (1)	100.1	-1.8	-0.3	-1.8
<b>(C4): Man. of transport equipment</b>	<b>108.2</b>	<b>1.7</b>	<b>2.1</b>	<b>2.4</b>
[CL1] Man. of motor vehicles, trailers and semi-trailers	93.5	1.5	1.9	2.1
[CL2] Man. of other transport equipment	124.7	1.9	2.2	2.6
<b>(C5): Other manufacturing</b>	<b>98.6</b>	<b>0.1</b>	<b>-0.5</b>	<b>0.7</b>
[CB] Man. of textiles, wearing apparel, leather and related products	100.1	3.0	-0.4	1.0
[CC] Man. of wood and paper products; printing and reproduction of recorded media	86.0	-3.6	1.2	1.0
[CE] Man. of chemicals and chemical products	110.1	-1.5	-0.8	0.7
[CF] Man. of basic pharmaceutical products and pharmaceutical preparations	105.6	0.3	0.7	4.4
[CG] Man. of rubber and plastics products, and other non-metallic mineral products	93.8	-0.2	0.0	-0.2
[CH] Man. of basic metals and fabricated metal products, except machinery and equipment	96.3	1.3	-1.3	0.8
[CM] Other manufacturing; repair and installation of machinery and equipment	102.5	0.7	-0.9	-0.6
<b>(DE): Mining and quarrying; energy; water supply; waste management</b>	<b>97.8</b>	<b>0.3</b>	<b>2.6</b>	<b>4.3</b>
[BZ] Mining and quarrying	93.1	-3.5	6.4	3.1
[DZ] Electricity, gas, steam and air-conditioning supply	96.7	0.8	2.7	5.3
[EZ] Water supply; sewerage, waste management and remediation	107.7	-1.3	0.9	-1.2
<b>FZ: CONSTRUCTION</b>	<b>85.5</b>	<b>-2.2</b>	<b>-0.1</b>	<b>-1.4</b>
<b>MIGs (2)</b>				
Capital goods	102.0	-0.2	0.5	0.2
Intermediate goods	96.6	0.7	-1.2	0.9
Consumer durables	92.2	-0.9	-0.9	-2.0
Consumer non-durables	101.4	-1.2	0.6	0.8
Energy	97.4	0.7	2.3	4.3

(1) n.e.c. : not elsewhere classifiable

(2) Main industrial groupings: definition in Commission regulation EC of June 14th 2007

Sources: Insee, SSP, SOeS

## In February 2015, output went up again in the manufacture of transport equipment (+1.7%)

Output increased again in the manufacture of other transport equipment (+1.9% after +2.2%), in particular in air and spacecraft related machinery, as well as in the manufacture of motor vehicles, trailers and semi-trailers (+1.5% after +1.9%).

## It was almost stable in other manufacturing (+0.1%)

In particular, output went up in the manufacture of basic metals and fabricated metal products, except machinery and equipment (+1.3%), in other manufacturing; repair and installation of machinery and equipment (+0.7%) and in the manufacture of textiles, wearing apparel, leather and related products (+3.0%). On the other hand, it declined in the manufacture of wood and paper products; printing and reproduction of recorded media (-3.6%) and more moderately in the manufacture of chemicals and chemical products (-1.5%).

## Output increased slightly in mining and quarrying; energy; water supply; waste management (+0.3%)

Output increased in electricity, gas, steam and air-conditioning supply (+0.8%); but decreased in mining and quarrying (-3.5%).

## Output accelerated in the manufacture of coke and refined petroleum products (+3.5%)

Output improved again in the manufacture of coke and refined petroleum products (+3.5% after +1.3%).

## Conversely output declined again in electrical and electronic equipment; machine equipment (-1.4% after -1.6%)

Output went down markedly in the manufacture of computer, electronic and optical products (-3.4% as in January) and in the manufacture of machinery and equipment n.e.c. (-1.8% after -0.3%).

## Output shrank in the manufacture of food products and beverages (-0.7% après +0.5%).

Output decreased in the manufacture of food products and beverages (-0.7%), which is mostly due to the manufacture of beverages and baked goods.

## Revisions in January 2015

### Revisions of changes


(in point %)

	Jan. / Dec.	Dec. / Nov.	Nov. / Oct.	Q4 2014 / Q3 2014	2014 / 2013
<b>Industry (BE)</b>	<b>-0.10</b>	<b>0.10</b>	<b>0.00</b>	<b>0.03</b>	<b>0.02</b>
raw serie	-0.30	-0.11	0.10	0.04	0.02
SA-WDA coefficient	0.20	0.21	-0.10	-0.01	0.00
<b>Manufacturing (CZ)</b>	<b>-0.20</b>	<b>0.10</b>	<b>0.00</b>	<b>-0.03</b>	<b>0.05</b>
raw serie	-0.41	0.10	0.00	-0.04	0.03
SA-WDA coefficient	0.21	0.00	0.00	0.01	0.02

How to read it: in the manufacturing sector, the SA-WDA evolution between December 2014 and January 2015 is revised by -0.20 point: -0.41 is due to the raw data revision and 0.21 to the new calculation of the SA-WDA coefficients.

Sources: Insee, SSP, SOeS

## Learn more:

- Complementary data (long series) and metadata (methodology, linked internet pages, etc.) are available on the web page of this index: <http://www.insee.fr/en/themes/info-rapide.asp?id=10>
- Historical data are available on the BDM: [G1397](#), [G1398](#), [G1400](#), [G1401](#), [G1411](#).
- Press contact: [bureau-de-presse@insee.fr](mailto:bureau-de-presse@insee.fr)
-  Follow us on [@InseeFr\\_News](https://twitter.com/InseeFr_News): [https://twitter.com/InseeFr\\_News](https://twitter.com/InseeFr_News)

Next issue: May 7th 2015, 8:45 AM