

Informations Rapides

22 mai 2015 - n° 123
Principaux indicateurs



Monthly business survey in services – May 2015

In May 2015, the business climate improves in services

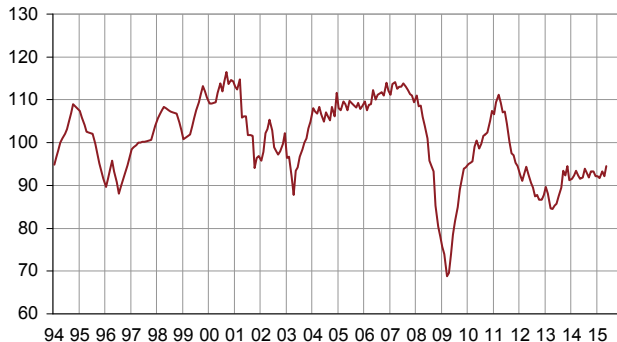
• All services

According to business managers, the business climate in services has improved in May 2015. The business climate composite indicator has increased by two points ; its level (94) is however still below its long-term average (100). The turning point indicator indicates a favorable dynamic.

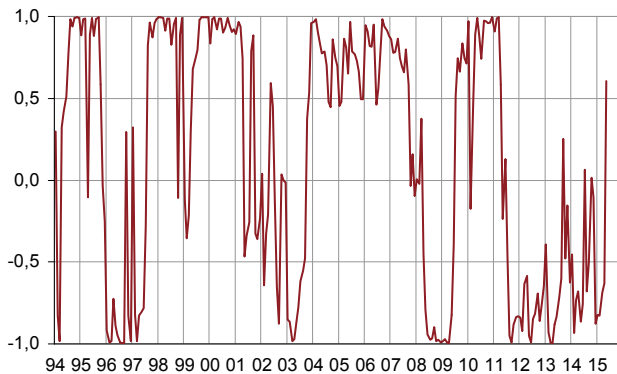
The balance on the general outlook, which relates the assessment of business leaders over their whole sector, has increased slightly again but remains below its long-term average.

Composite indicator

Standardized indicator : average = 100 and standard deviation = 10



Turning point indicator



Note: close to 1 (respectively -1), this indicator indicates a favorable short-term economic situation (respectively unfavorable).

The balances of opinion on past and expected activity and on expected demand have gone up but stay below their long-term average.

The balances of opinion on employment have improved markedly; the balance on expected employment stands above its long-term average.

Economic outlook in the services sector

Balances of opinion, in %, seasonally adjusted

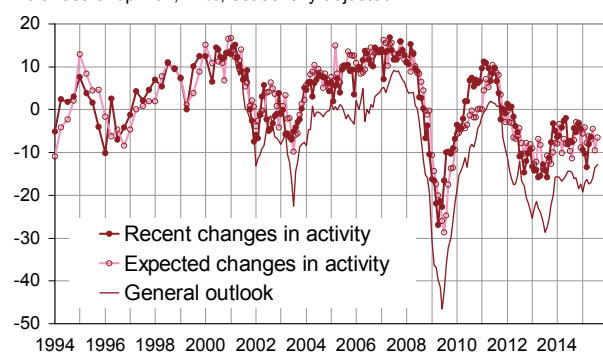
	Average*	Feb. 15	March 15	April 15	May 15
Composite indicator	100	92	93	92	94
General outlook	-8	-17	-16	-14	-13
Past activity	2	-10	-13	-8	-6
Expected activity	2	-7	-5	-9	-7
Expected demand	-1	-8	-6	-6	-5
Business situation	-3	-9	-9	-8	-5
Past selling prices	-4	-12	-12	-15	-12
Expected selling prices	-2	-9	-10	-9	-7
Past employment	2	-2	-9	-8	-2
<i>except temporary work agencies</i>	1	-1	-7	-6	-2
Expected employment	2	-2	-4	-1	4
<i>except temporary work agencies</i>	-1	-5	-9	-3	-1
Investments					
<i>Past investments</i>	1	-4	0	6	4
<i>Expected investments</i>	1	0	-2	2	4

* Average of the balances of opinion since 1988

Source: Insee

Activity

Balances of opinion, in %, seasonally adjusted



• Road transport

In road freight and mail activities, fewer business leaders than in April indicate that their past activity has declined. The expectations on activity have improved and the corresponding balance has recovered to its long-term average. Nevertheless, the balance on expected employment has gone down significantly and stands below its long-term average.

• Accommodation and food service activities

In accommodation and food service activities, the balances of opinion on past and expected activity and on expected demand stay low. However the balances on past and expected employment have improved again.

• Information and communication

In information and communication, the balances on past and expected activity and employment are virtually stable and remain below their long-term average. The expectations on demand have deteriorated moderately.

• Real estate

In real estate, the balance of opinion on past activity remain low. The anticipations on activity and demand have improved ; the balance on expected activity has regained its long-term level. The balances on past and expected employment are almost stable, below their long-term average.

• Professional, scientific and technical activities

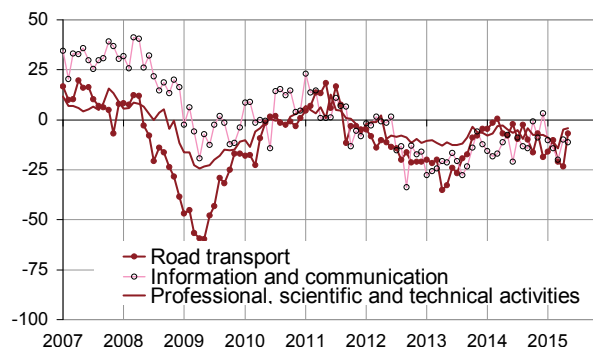
In professional, scientific and technical activities, business leaders stay more pessimistic than in average on past activity. Their expectations on activity and demand have improved even if the corresponding balances remain below their long-term average.

• Administrative and support service activities

In administrative and support service activities, business leaders' expectations on activity are much more optimistic than in April. The corresponding balance is close to its long-term average. The balances of opinion on past and expected employment have gone up significantly.

Past activity

Balances of opinion, %, CVS



Detailed data

Balances of opinion, in %, seasonally adjusted

A21	Average*	Feb. 15	March 15	April 15	May 15
(H) Road transport					
Past activity	-8	-10	-21	-23	-7
Expected activity	-10	-24	-20	-16	-10
Expected demand	-13	-24	-24	-12	-13
Past employment	-8	-4	-9	-10	-11
Expected employment	-11	-14	-18	-4	-13
(I) Accommodation and food service activities					
Past activity	-7	-17	-26	-14	-16
Expected activity	-7	-10	-14	-14	-11
Expected demand	-9	-1	-2	-18	-14
Past employment	-4	-9	-20	-6	4
Expected employment	-5	-18	-13	6	12
(J) Information and communication					
Past activity	9	-14	-20	-10	-11
Expected activity	10	-6	3	-11	-13
Expected demand	11	5	4	8	5
Past employment	6	-2	-3	-6	-4
Expected employment	11	1	0	3	4
(L) Real estate activities					
Past activity	7	0	4	-2	-3
Expected activity	7	1	12	2	7
Expected demand	1	-4	-4	-9	-5
Past employment	3	3	-2	-2	-2
Expected employment	2	4	9	-7	-6
(M) Professional, scientific and technical activities					
Past activity	-1	-11	-14	-5	-4
Expected activity	-2	-11	-11	-12	-6
Expected demand	-6	-20	-16	-17	-8
Past employment	1	2	-5	1	2
Expected employment	0	1	-6	-7	-5
(N) Administrative and support service activities					
Past activity	5	-7	-1	-2	-1
Expected activity	5	-3	2	-3	4
Expected demand	3	-10	-3	1	1
Past employment	8	0	-8	-8	2
Expected employment	6	1	7	3	13

* Average of the balances of opinion since 1988 (2006 for road transport)

For further information:

A balance of opinion is calculated as the difference between the percentage of "increase" responses and the percentage of "decrease" responses.

- Additional information (long series, methodology, links, etc.) is available on the web page of this indicator:

<http://www.insee.fr/fr/themes/indicateur.asp?id=62>

- Historical data are available on the BDM: [G1244](#), [G1245](#), [G1246](#).

- Press contact: bureau-de-presse@insee.fr

- Follow us on Twitter @InseeFr_News: https://twitter.com/InseeFr_News

Next publication: 23 06 2015 at 08h45