

Informations Rapides

23 décembre 2014 - n° 301



■ Turnover in industry and construction – October 2014

In October 2014, the turnover went down in the manufacturing industry (–1.1%)

Every index in this issue is in value (tax excluded), seasonally and working day adjusted. The commentary shows variations of subsections by decreasing contribution. The contribution of a subsection depends on the extent of the change and on its weight.

In October 2014, the turnover fell in the **manufacturing industry** (–1.1%) after a rise in September (+0.5%). Exports dropped as well (–1.1%).

In the **industry as a whole**, the turnover declined more significantly (–1.5%).

Stability over the last three months (–0.1%)

Over the last quarter (q-o-q), the turnover levelled off in the **manufacturing industry** (–0.1%) as well as in the **industry as a whole** (+0.1%).

The turnover fell substantially in the **manufacture of transport equipment** (–1.8%), owed to the **manufacture of other transport equipment** (–4.1%). It decreased in the **manufacture of coke and refined petroleum products** (–1.0%) and went down slightly in the **electrical and electronic equipment; machine equipment** (–0.2%). It remained almost stable in the **manufacture of food products and beverages** (–0.1%). Conversely, it grew in **other manufacturing** (+0.7%), mainly in the **manufacture of basic metals and fabricated metal products** (+1.3%). It increased too in the **mining and quarrying; energy; water supply; waste management** (+1.4%).

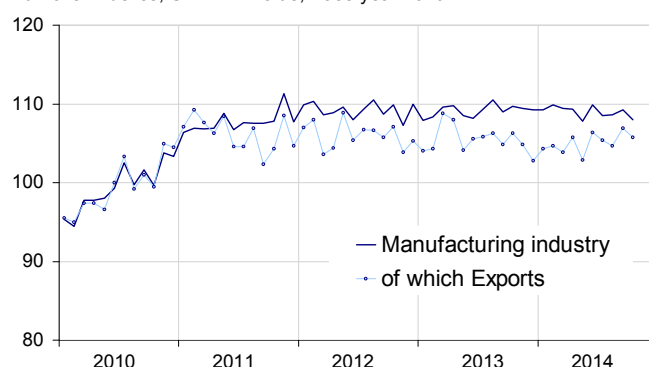
Fall compared to last year (–1.0%)

The turnover in the **manufacturing industry** went down over the last three months compared to the same three months of last year (–1.0%). It fell as well in the **industry as a whole** (–0.9%).

Over this period, the turnover crashed in the **manufacture of coke and refined petroleum products** (–6.0%). It decreased in **other industries** (–0.8%), in the **electrical and electronic equipment; machine equipment** (–1.7%) and in the **manufacture of transport equipment** (–0.9%). It grew slightly in the **manufacture of food products and beverages** (+0.3%).

Turnover in manufacturing industry

Turnover indexes, SA-WDA value, Base year 2010



Source: INSEE

Variation of the turnover in industry and construction

SA-WDA value, Base year 2010

NA: A 10, (A 17)	Weight**	Change in %			
		Oct./ Sep.	Sep./ Aug.	q-o-q (1)	y-o-y (2)
BE: INDUSTRY	10000	–1.5	0.7	0.1	–0.9
CZ: MANUFACTURING INDUSTRY	8373	–1.1	0.5	–0.1	–1.0
Of which Exports	2731	–1.1	2.1	0.8	0.0
(C1): Manufacture of food products and beverages	1647	–0.6	1.0	–0.1	0.3
(C2): Manufacture of coke and refined petroleum products	478	–3.5	–0.7	–1.0	–6.0
(C3): Electrical and electronic equipment; machine equipment	1005	–1.3	–0.9	–0.2	–1.7
(C4): Manufacture of transport equipment	1428	–2.7	5.2	–1.8	–0.9
(C5): Other manufacturing	3815	–0.4	–0.7	0.7	–0.8
DE: Mining and quarrying; energy; water supply; waste management	1627	–2.7	1.0	1.4	–0.1
FZ: CONSTRUCTION	10000	–1.9	3.1	1.2	3.0

** 10000=B...E and F

(1) Quarter-on-quarter: last three months / previous three months

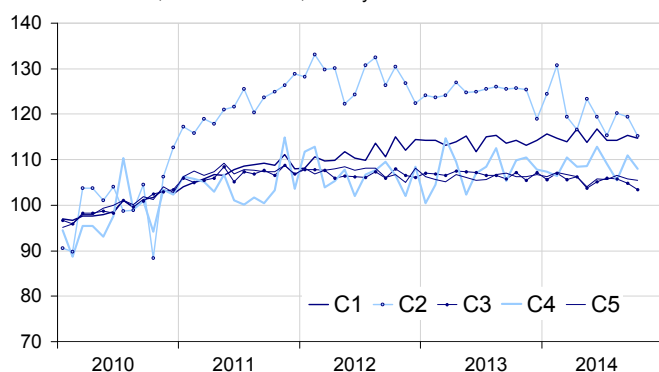
(2) Year-on-year: last three months / same three months of previous year

The codes correspond to different levels of aggregation of the NACE classification.

Source: INSEE

Turnover in manufacturing industry by sector

Turnover indexes, SA-WDA value, Base year 2010



Source: INSEE

Sharp fall in transport equipment (-2.7%)

In October, the turnover dropped significantly in the *manufacture of transport equipment* (-2.7%) after a considerable rise in September (+5.2%). It dipped sharply in the *manufacture of other transport equipment* (-3.3%) as in the *manufacture of motor vehicles...* (-2.0%).

Drop in coke and refined petroleum products (-3.5%)

In October, the turnover went down considerably in the *manufacture of coke and refined petroleum products* (-3.5%) after a moderate fall in September (-0.7%).

New decline in other industries (-0.4%)

In October, the turnover went down again in *other industries* (-0.4%, after -0.7% in September). It fell mainly in the *manufacture of basic pharmaceutical products and pharmaceutical preparations* (-1.9%), in the *manufacture of chemicals and chemical products* (-0.7%) and in the *manufacture of wood and paper products* (-0.6%). Conversely, it improved in the *manufacture of basic metals and fabricated metal products* (+0.4%).

Another fall in equipments (-1.3%)

The turnover declined again in October in the *electrical and electronic equipment; machine equipment* (-1.3%, after -0.9% in September). It dropped sharply in the *manufacture of machinery and equipment n.e.c.* (-2.2%) and significantly in the *manufacture of computer, electronic and optical products* (-1.4%). On the other hand, it rebounded slightly in the *manufacture of electrical equipment* (+0.3%).

Decrease in food products and beverages (-0.6%)

The turnover in the *manufacture of food products and beverages* decreased in October (-0.6%) after a rise in September (+1.0%).

• Revisions: -0.1 point in September in the manufacturing industry

In the *manufacturing industry*, the change of the turnover in September is revised slightly downwards, at +0.5% instead of +0.6% published previously.

Indexes of turnover in industry and construction

SA-WDA, based year 2010

Industries:	Weight*	Oct. 2014	Change in %		
			Oct./ Sep.	Sep./ Aug.	q-o-q (1)
BE: INDUSTRY	10000	107.9	-1.5	0.7	0.1
CZ: MANUFACTURING INDUSTRY	8373	108.0	-1.1	0.5	-0.1
of which Exports	2731	105.7	-1.1	2.1	0.8
(C1): Man. of food products and beverages	1647	114.7	-0.6	1.0	-0.1
of which Exports	284	122.3	-0.2	1.6	2.4
(C2): Man. of coke and refined petroleum products	478	115.2	-3.5	-0.7	-1.0
(C3): Electrical and electronic equipment; machine equipment	1005	103.5	-1.3	-0.9	-0.2
of which Exports	483	102.3	-1.2	1.8	-0.6
[CI] Man. of computer, electronic and optical products	269	98.9	-1.4	-0.5	1.6
[CJ] Man. of electrical equipment	302	99.5	0.3	-2.6	0.7
[CK] Man. of machinery and equipment n.e.c.	434	109.2	-2.2	0.0	-1.8
(C4): Man. of transport equipment	1428	108.0	-2.7	5.2	-1.8
of which Exports	693	98.3	-0.4	4.6	-0.3
[CL1] Man. of motor vehicles, trailers and semi-trailers	689	89.9	-2.0	-2.9	1.5
[CL2] Man. of other transport equipment	739	124.9	-3.3	11.6	-4.1
(C5): Other manufacturing	3815	105.4	-0.4	-0.7	0.7
of which Exports	1213	106.1	-0.4	-0.6	0.9
[CB] Man. of textiles, wearing apparel, leather and related products	191	108.9	0.2	-0.9	0.0
[CC] Man. of wood and paper products; printing and reproduction of recorded media	427	100.7	-0.6	-1.8	0.6
[CE] Man. of chemicals and chemical products	706	107.3	-0.7	0.7	1.1
[CF] Man. of basic pharmaceutical products and pharmaceutical preparations	322	97.8	-1.9	-1.6	0.1
[CG] Man. of rubber and plastics products, and other non-metallic mineral products	620	101.1	-0.3	-1.6	-0.4
[CH] Man. of basic metals and fabricated metal products, except machinery and equipment	900	106.2	0.4	-0.3	1.3
[CM] Other manufacturing; repair and installation of machinery and equipment	649	112.5	0.0	-0.9	1.3
DE: Mining and quarrying; energy, water supply, sewerage, waste management	1627	107.6	-2.7	1.0	1.4
[BZ] Mining and quarrying	69	101.5	-1.8	1.1	-1.4
[DZ] Electricity, gas, steam and air-conditioning supply	1216	108.7	-3.3	1.9	1.7
[EZ] Water supply; sewerage, waste management and remediation	342	104.8	-0.9	-2.1	1.0
FZ: CONSTRUCTION	10000	108.9	-1.9	3.1	1.2

** 10000=B...E and F

(1) Quarter-on-quarter: last three months / previous three months

Source: INSEE

Measure of variations' revisions

(in point %)

	Sep./ Aug.	Aug./ July	July/ June	Q3 2014/ Q2 2014	2013/ 2012
Industry (BE)	0.46	0.00	-0.18	0.09	-0.03
raw serie	0.56	0.00	0.00	0.16	0.00
SA-WDA coeff.	-0.10	0.00	-0.18	-0.06	-0.03
Manufacturing industry (CZ)	-0.09	0.00	0.00	-0.09	-0.01
raw serie	0.00	0.00	0.00	0.00	0.00
SA-WDA coeff.	-0.09	0.00	0.00	-0.09	-0.01

Foot note: in the manufacturing industry, the SA-WDA evolution between August and September 2014 is revised by -0.09 point, due to the new calculation of the SA-WDA.

Source: INSEE

For further information:

- Complementary data (long series) and metadata (methodology, linked internet pages, etc.) are available on the web page of this index: <http://www.insee.fr/fr/themes/info-rapide.asp?id=53>
- Historical data are available on the BDM: [G1444](#), [G1445](#), [G1446](#), [G1447](#), [G1448](#) and [G1529](#)
- Press contact: bureau-de-presse@insee.fr
- Follow us on [Twitter](#) @InseeFr_News

Next issue: January 30th, 2015