

Informations Rapides

10 octobre 2014 - n° 233



Main indicators

Industrial Production Indices – August 2014

In August 2014, manufacturing output decreased slightly (–0.2%)

In August 2014, **manufacturing output** went down slightly (–0.2%), after being more or less stable in July (–0.1%). Output remained stable in **industrial production as a whole**, after an increase of 0.3% in July 2014.

Manufacturing output remained almost stable over the last three months (–0.1%)...

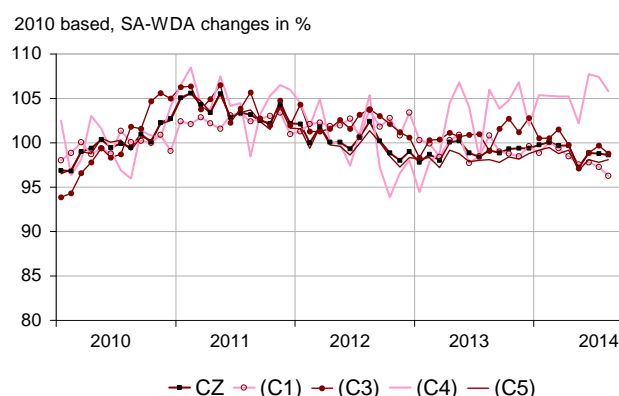
During the last three months (q-o-q), output remained almost stable in the manufacturing sector (–0.1%), whereas it increased in industry as a whole (+0.6%). Output declined in *other manufacturing* (–0.3%) and in the *manufacture of food products and beverages* (–1.4%). It decreased more sharply in the *manufacture of coke and refined petroleum products* (–4.5%). Output declined slightly in the *manufacture of electrical and electronic equipment; machine equipment* (–0.3). On the opposite, output increased in the *manufacture of transport equipment* (+2.7%) and more strongly in *mining, quarrying, energy and water supply* (+3.8%).

...and over the year (–0.1%).

Manufacturing output in the latest three months remained almost stable compared with the same months of previous year (–0.1% y-o-y). Output decreased in the *manufacture of food products and beverages* (–1.9%) and in the *manufacture of electrical and electronic equipment; machine equipment* (–1.2%). It plummeted in the *manufacture of coke and refined petroleum products* (–9.7%). On the contrary, output increased significantly in the *manufacture of transport equipment* (+4.1%), and levelled off in *other manufacturing*.

Please note: all the series are seasonally (SA) and working-day adjusted (WDA).

Monthly Industrial Production Indices



Legend: CZ: Manufacturing - (C1): Manufacture of food products and beverages - (C3): Electrical and electronic equipment; machine equipment - (C4): Manufacture of transport equipment - (C5): Other manufacturing
Sources: Insee, SSP, SOeS

Variation of the Industrial Production

2010 based, SA-WDA changes in %

	Aug. / July	July / June	Q-o-Q change (1)	Year on year change (2)
NA : A10, (A17)				
BE: INDUSTRY	0.0	0.3	0.6	–0.2
CZ: Manufacturing	–0.2	–0.1	–0.1	–0.1
(C1): Manufacture of food products and beverages	–1.0	–0.5	–1.4	–1.9
(C2): Manufacture of coke and refined petroleum products	5.0	2.6	–4.5	–9.7
(C3): Electrical and electronic equipment; machine equipment	–0.9	0.8	–0.3	–1.2
(C4): Manufacture of transport equipment	–1.5	–0.3	2.7	4.1
(C5): Other manufacturing	0.3	–0.3	–0.3	0.0
(DE): Mining and quarrying; energy; water supply; waste management	0.5	2.2	3.8	–0.8
FZ: CONSTRUCTION	2.4	–0.5	0.9	0.0

(1) Last three months / previous three months
(2) Last three months / same three months of previous year
The codes correspond to the level of aggregation A 10 (A 17) of the "NA" aggregate classification based on NAF rev.2.
Sources: INSEE, SSP, SOeS

Variation of the Industrial Production

2010 based, SA-WDA changes in %

NA : A10, (A17), [A38 ou A64]	Aug. 2014	Aug. / July	July / June	Quarter on quarter change
BE: INDUSTRY	98.4	0.0	0.3	0.6
CZ: Manufacturing	98.6	-0.2	-0.1	-0.1
(C1): Man. of food products and beverages	96.3	-1.0	-0.5	-1.4
(C2): Man. of coke and refined petroleum products	82.1	5.0	2.6	-4.5
(C3): Electrical and electronic equipment; machine equipment	98.8	-0.9	0.8	-0.3
[CI] Man. of computer, electronic and optical products	102.2	-1.9	1.6	-0.1
[CJ] Man. of electrical equipment	90.4	-1.7	1.9	-4.1
[CK] Man. of machinery and equipment n.e.c. (1)	102.0	0.3	-0.2	1.7
(C4): Man. of transport equipment	105.8	-1.5	-0.3	2.7
[CL1] Man. of motor vehicles, trailers and semi-trailers	97.1	7.3	-2.3	3.4
[CL2] Man. of other transport equipment	115.6	-8.5	1.4	2.1
(C5): Other manufacturing	98.1	0.3	-0.3	-0.3
[CB] Man. of textiles, wearing apparel, leather and related products	93.8	-4.0	3.6	-1.8
[CC] Man. of wood and paper products; printing and reproduction of recorded media	88.9	-1.8	1.1	0.5
[CE] Man. of chemicals and chemical products	111.7	-0.9	2.7	1.6
[CF] Man. of basic pharmaceutical products and pharmaceutical preparations	94.2	0.4	-0.3	-2.5
[CG] Man. of rubber and plastics products, and other non-metallic mineral products	96.6	1.9	-0.9	0.3
[CH] Man. of basic metals and fabricated metal products, except machinery and equipment	96.9	1.8	-1.4	-0.2
[CM] Other manufacturing; repair and installation of machinery and equipment	100.7	-0.5	-1.4	-1.2
(DE): Mining and quarrying; energy; water supply; waste management	97.4	0.5	2.2	3.8
[BZ] Mining and quarrying	93.1	3.0	0.2	-2.7
[DZ] Electricity, gas, steam and air-conditioning supply	96.1	0.4	2.5	5.4
[EZ] Water supply; sewerage, waste management and remediation	108.5	0.7	0.9	-3.1
FZ: CONSTRUCTION	97.1	2.4	-0.5	0.9
MIGs (2)				
Capital goods	101.8	-1.0	-0.2	1.0
Intermediate goods	97.6	1.2	0.0	-0.3
Consumer durables	97.9	1.7	-4.5	-2.2
Consumer non-durables	97.0	-1.6	0.1	-1.3
Energy	96.1	0.6	2.4	3.5

(1) n.e.c. : not elsewhere classifiable

(2) Main industrial groupings: definition in Commission regulation EC of June 14th 2007

Sources: Insee, SSP, SOeS

In August 2014, output went down in the manufacture of transport equipment (-1.5%)...

Output fell in the manufacture of other transport equipment (-8.5%) but bounced back sharply in the manufacture of motor vehicles, trailers and semi-trailers (+7.3%).

...in the manufacture of electrical and electronic equipment; machine equipment (-0.9%)...

Output decreased in the manufacture of computer, electronic and optical products (-1.9%) and in the manufacture of electrical equipment (-1.7%). On the other hand it increased slightly in the manufacture of machinery and equipment n.e.c. (+0.3%).

...and in the manufacture of food products and beverages (-1.0%).

In August, output decreased by 1.0% in the manufacture of food products and beverages, particularly for dairy products and tobacco products.

Output increased in other manufacturing (+0.3%).

Output went up slightly in other manufacturing (+0.3%). In particular, output increased in the manufacture of basic metals and fabricated metal products, except machinery and equipment products (+1.8%) and in the manufacture of rubber and plastics products, and other non-metallic mineral products (+1.9%). On the contrary output decreased in the manufacture of wood and paper products; printing and reproduction of recorded media (-1.8%) and in the manufacture of textiles, wearing apparel, leather and related products (-4.0%).

Output increased in mining and quarrying; energy; water supply; waste management (+0.5 %).

Output increased in electricity, gas, steam and air-conditioning supply (+0.4%) and in mining and quarrying (+3.0%).

Output went up in the manufacture of coke and refined petroleum products (+5.0 %).

Output went up substantially by 5.0% in the manufacture of coke and refined petroleum products.

• Revisions in July

Revisions of changes


(in point %)

	July / June	June / May	May / April	Q2 2014 / Q1 2014	2013 / 2012
Industry (BE)	0.10	0.10	0.00	-0.13	0.10
raw serie	0.10	-0.13	0.11	0.04	0.08
SA-WDA coefficient	0.00	0.23	-0.11	-0.17	0.02
Manufacturing (CZ)	0.20	0.00	-0.10	0.00	0.08
raw serie	0.00	0.09	0.10	0.00	0.12
SA-WDA coefficient	0.20	-0.09	-0.20	0.00	-0.04

Note of reading: in the manufacturing sector, the SA-WDA evolution between June and July 2014 is revised by 0.2 point, due to the new calculation of the SA-WDA.

Sources: Insee, SSP, SOeS

Learn more:

- Complementary data (long series) and metadata (methodology, linked internet pages, etc.) are available on the web page of this index: <http://www.insee.fr/en/themes/info-rapide.asp?id=10>
- Historical data are available on the BDM: [G1397](#), [G1398](#), [G1400](#), [G1401](#), [G1411](#).
- Press contact: bureau-de-presse@insee.fr
-  Follow us on [Twitter @InseeFr_News](https://twitter.com/InseeFr_News): https://twitter.com/InseeFr_News

Next issue: November 7th 2014, 8:45 AM