

Informations Rapides

24 octobre 2014 - n° 245



■ Turnover in industry and construction – August 2014

In August 2014, the turnover in manufacturing industry rose slightly (+0.2%)

Every index in this issue is in value (tax excluded), seasonally and working day adjusted. The commentary shows variations of subsections by decreasing contribution. The contribution of a subsection depends on the extent of the change and on its weight.

In August 2014, the turnover went up slightly in the **manufacturing industry** (+0.2%) after a sharp fall in July (–1.3%), in spite of a new decline in exports (–0.9%). The turnover also grew in the **industry as a whole** (+0.5%).

Slight rise over the last three months (+0.3%)

Over the last quarter (q-o-q), the turnover increased in the **manufacturing industry** (+0.3%) as well as in the **industry as a whole** (+0.4%).

The turnover rose in *other manufacturing* (+0.4%), mainly in the *manufacture of chemicals and chemical products* (+1.1%) and in the *manufacture of basic metals and fabricated metal products* (+0.7%). It also went up in the *electrical and electronic equipment; machine equipment* (+0.5%) and in the *manufacture of food products and beverages* (+0.3%). On the other hand, it dropped in the *manufacture of coke and refined petroleum products* (–0.9%). It remained stable in the *manufacture of transport equipment* (0.0%): the rise in the *manufacture of motor vehicles, trailers and semi-trailers* (+1.1%) was balanced by the decline in the *manufacture of other transport equipment* (–0.8%).

Slight fall compared to last year (–0.3%)

Year-on-year, the turnover fell slightly in the **manufacturing industry** (–0.3%).

Over this period, the turnover slumped in the *manufacture of coke and refined petroleum products* (–5.7%) and slid in the *electrical and electronic equipment; machine equipment* (–1.0%). Conversely, it climbed in the *manufacture of food products and beverages* (+0.9%). It levelled off in the *manufacture of transport equipment* (–0.1%) and in *other industries* (0.0%).

Turnover in manufacturing industry

Turnover indexes, SA-WDA value, Base year 2010



Source: INSEE

Variation of the turnover in industry and construction

SA-WDA value, Base year 2010

NA: A 10, (A 17)	Weight**	Change in %			
		Aug./ July	July/ June	q-o-q (1)	y-o-y (2)
BE: INDUSTRY	10000	0.5	–1.2	0.4	–0.3
CZ: MANUFACTURING INDUSTRY	8373	0.2	–1.3	0.3	–0.3
Of which Exports	2731	–0.9	–1.0	1.2	–0.4
(C1): Manufacture of food products and beverages	1647	0.1	–2.1	0.3	0.9
(C2): Manufacture of coke and refined petroleum products	478	4.4	–3.3	–0.9	–5.7
(C3): Electrical and electronic equipment; machine equipment	1005	0.1	1.0	0.5	–1.0
(C4): Manufacture of transport equipment	1428	–3.1	–3.4	0.0	–0.1
(C5): Other manufacturing	3815	0.9	–0.3	0.4	0.0
DE: Mining and quarrying; energy; water supply; waste management	1627	2.3	–1.3	0.9	–0.4
FZ: CONSTRUCTION	10000	–0.1	–1.3	0.7	2.4

** 10000=B...E and F

(1) Quarter-on-quarter: last three months / previous three months

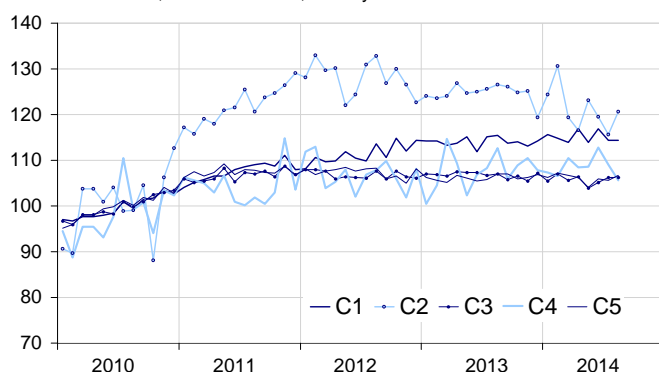
(2) Year-on-year: last three months / same three months of previous year

The codes correspond to different levels of aggregation of the NACE classification.

Source: INSEE

Turnover in manufacturing industry by sector

Turnover indexes, SA-WDA value, Base year 2010



Source: INSEE

In August 2014, the turnover plunged in transport equipment (-3.1%)

In August, the turnover decreased sharply for the second month in a row in the *manufacture of transport equipment* (-3.1%, after -3.4% in July), owed to a dramatic drop in the *manufacture of other transport equipment* (-9.1%), in spite of a sharp rebound in the *manufacture of motor vehicles, trailers and semi-trailers* (+5.9%, after -3.6% in July).

Rise in other industries (+0.9%)

In August, the turnover grew in other industries (+0.9%) after a slight fall in July (-0.3%). It rose in all sectors, mainly in the *other manufacturing; repair and installation of machinery and equipment* (+1.6%), the *manufacture of wood and paper products; printing and reproduction of recorded media* (+1.9%), the *manufacture of basic metals and fabricated metal products* (+0.8%) and the *manufacture of rubber and plastics products, and other non-metallic mineral products* (+0.8%).

Rebound in coke and refined petroleum (+4.4%)

In August, the turnover bounced back in the *manufacture of coke and refined petroleum products* (+4.4%).

Stability in food products and beverages (+0.1%)...

In August, the turnover flattened out in the *manufacture of food products and beverages* (+0.1%), after a significant fall in July (-2.1%).

...and in equipments (+0.1%)

The turnover levelled off in August in the *electrical and electronic equipment; machine equipment* (+0.1%) after a rise for two months in a row. It grew in the *manufacture of computer, electronic and optical products* (+1.5%) and more slightly in the *manufacture of electrical equipment* (+0.3%). Conversely, it declined in the *manufacture of machinery and equipment n.e.c.* (-0.9%)

• Revisions: -0.2 point in July

In the *manufacturing industry*, the change of the turnover in July is revised at -1.3%, instead of -1.1% calculated previously.

Indexes of turnover in industry and construction

SA-WDA, based year 2010

Industries:	Weight*	Aug. 2014	Change in %		
			Aug./ July	July/ June	q-o-q (1)
BE: INDUSTRY	10000	108.9	0.5	-1.2	0.4
CZ: MANUFACTURING INDUSTRY	8373	108.8	0.2	-1.3	0.3
of which Exports	2731	104.4	-0.9	-1.0	1.2
(C1): Man. of food products and beverages	1647	114.4	0.1	-2.1	0.3
of which Exports	284	120.3	0.3	-0.1	0.3
(C2): Man. of coke and refined petroleum products	478	120.7	4.4	-3.3	-0.9
(C3): Electrical and electronic equipment; machine equipment	1005	106.3	0.1	1.0	0.5
of which Exports	483	101.5	-3.4	1.1	-0.4
[CI] Man. of computer, electronic and optical products	269	100.7	1.5	1.1	0.5
[CJ] Man. of electrical equipment	302	102.1	0.3	3.2	-0.4
[CK] Man. of machinery and equipment n.e.c.	434	112.6	-0.9	-0.6	1.2
(C4): Man. of transport equipment	1428	105.6	-3.1	-3.4	0.0
of which Exports	693	93.7	-0.3	-7.9	3.4
[CL1] Man. of motor vehicles, trailers and semi-trailers	689	94.8	5.9	-3.6	1.1
[CL2] Man. of other transport equipment	739	115.6	-9.1	-3.3	-0.8
(C5): Other manufacturing	3815	106.7	0.9	-0.3	0.4
of which Exports	1213	107.1	-0.4	1.4	1.0
[CB] Man. of textiles, wearing apparel, leather and related products	191	109.6	0.8	-1.4	-0.3
[CC] Man. of wood and paper products; printing and reproduction of recorded media	427	103.8	1.9	0.2	1.1
[CE] Man. of chemicals and chemical products	706	107.6	0.4	-0.1	1.1
[CF] Man. of basic pharmaceutical products and pharmaceutical preparations	322	101.4	0.5	1.5	0.3
[CG] Man. of rubber and plastics products, and other non-metallic mineral products	620	103.3	0.8	-1.4	-0.4
[CH] Man. of basic metals and fabricated metal products, except machinery and equipment	900	106.2	0.8	0.0	0.7
[CM] Other manufacturing; repair and installation of machinery and equipment	649	113.5	1.6	-0.4	0.1
DE: Mining and quarrying; energy, water supply, sewerage, waste management	1627	109.6	2.3	-1.3	0.9
[BZ] Mining and quarrying	69	103.0	-0.9	-1.1	-1.7
[DZ] Electricity, gas, steam and air-conditioning supply	1216	110.1	2.7	-2.0	0.2
[EZ] Water supply; sewerage, waste management and remediation	342	108.9	1.2	1.3	4.3
FZ: CONSTRUCTION	10000	107.3	-0.1	-1.3	0.7

* 10000=B...E and F

(1) Quarter-on-quarter: last three months / previous three months

Source: INSEE

Measure of variations' revisions

(in point %)

	July/ June	June/ May	May/ Apr.	Q2 2014/ Q1 2014	2013/ 2012
Industry (BE)	0.18	0.09	0.00	0.12	0.01
raw serie	0.45	0.00	0.00	0.00	0.00
SA-WDA coeff.	-0.27	0.09	0.00	0.12	0.01
Manufacturing industry (CZ)	-0.18	0.09	0.00	0.03	0.00
raw serie	-0.09	0.00	0.00	0.00	0.00
SA-WDA coeff.	-0.09	0.09	0.00	0.03	0.00

Foot note: in the manufacturing industry, the SA-WDA evolution between June and July 2014 is revised by -0.18 point: -0.09 point is due to the raw serie's revision and -0.09 to the new calculation of the SA-WDA.

Source : INSEE

For further information:

- Complementary data (long series) and metadata (methodology, linked internet pages, etc.) are available on the web page of this index: <http://www.insee.fr/fr/themes/info-rapide.asp?id=53>
- Historical data are available on the BDM: [G1444](#), [G1445](#), [G1446](#), [G1447](#), [G1448](#) and [G1529](#)
- Press contact: bureau-de-presse@insee.fr
- Follow us on [Twitter](#) @InseeFr_News

Next issue: November 28th, 2014