

# Informations Rapides

28 novembre 2014 - n° 277



## ■ Turnover in the wholesale trade and business services - September 2014

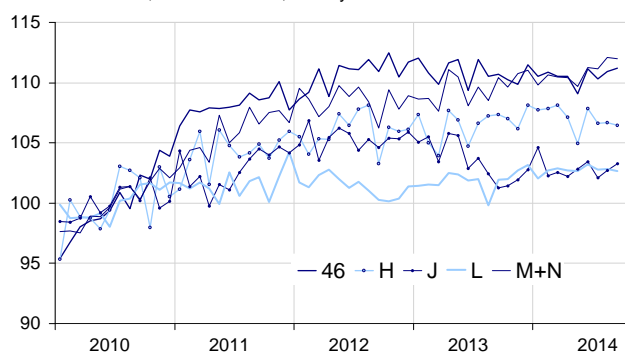
### In September 2014, the turnover increased in information and communication

Every index in this issue is in value (tax excluded), seasonally and working day adjusted (SA-WDA). The commentary shows variations of subsections by decreasing contribution. The contribution of a subsection depends on the extent of the change and on its weight.

In September 2014, the turnover increased in *information and communication* (+0.6%) and grew slightly in the *wholesale trade, except for motor vehicles and motorcycles* (+0.2%). Conversely it shrank slightly in *transportation and storage* (-0.2%) and in *real estate activities* (-0.2%). It held almost steady in *business support activities* (-0.1%).

#### Turnover in the wholesale trade and business services

Turnover indices, SA-WDA value, Base year 2010



Source: INSEE

#### Slight increase in the wholesale trade, except for motor vehicles and motorcycles

In September, the turnover of the *wholesale trade, except for motor vehicles and motorcycles* increased slightly (+0.2%) after an increase in August (+0.6%). It rose in the *wholesale of food, beverages and tobacco* (+1.3%), in the *wholesale on a fee or contract basis* (+1.1%) and in *other specialised wholesale* (+0.6%). Inversely, it diminished in the *wholesale of household goods* (-0.5%). The turnover of the *wholesale trade, except for motor vehicles and motorcycles* went up over the last quarter (+0.5%) and decreased slightly over the year (-0.2%).

#### Slight drop in transportation and storage

In September, the turnover of *transportation and storage* dropped slightly (-0.2%) after an almost stability in August (+0.1%). It tumbled strongly in *air transport* (-22.3%) due to social movements. By contrast it increased in *warehousing and support activities for transportation* (+2.1%), *land transport and transport via pipelines* (+1.7%), and in *water transport* (+3.0%).

The turnover of *transportation and storage* held steady over the last quarter and decreased over the year (-0.4%).

#### Slight decline in real estate activities

The turnover of *real estate activities* declined slightly in September (-0.2%) after remaining nearly stable in August (+0.1%). It held almost steady over the last quarter (-0.1%) and increased over the year (+1.5%).

#### Variation of the turnover in the wholesale trade and business services

SA-WDA value, Base year 2010

Nace classification	Weight	Change in %			
		Sept./ Aug.	Aug./ July	q-o-q (1)	y-o-y (2)
<b>46 Wholesale trade, except for motor vehicles and motorcycles</b>	<b>1000</b>	<b>0.2</b>	<b>0.6</b>	<b>0.5</b>	<b>-0.2</b>
<b>H Transportation and storage</b>	<b>1000</b>	<b>-0.2</b>	<b>0.1</b>	<b>0.0</b>	<b>-0.4</b>
<b>J Information and communication</b>	<b>1000</b>	<b>0.6</b>	<b>0.6</b>	<b>-0.1</b>	<b>0.2</b>
<b>L Real estate activities</b>	<b>1000</b>	<b>-0.2</b>	<b>0.1</b>	<b>-0.1</b>	<b>1.5</b>
<b>M+N Business support activities</b>	<b>1000</b>	<b>-0.1</b>	<b>0.8</b>	<b>1.2</b>	<b>2.0</b>
<i>M Professional, scientific and technical activities</i>	579	0.0	0.5	0.9	2.1
<i>N Administrative and support service activities</i>	421	-0.3	1.3	1.5	1.8

(1) Quarter-on-quarter: last three months / previous three months

(2) Year-on-year : last three months / same three months of previous year

The codes correspond to different levels of aggregation of the NACE classification.

Source: INSEE

### New increase in information and communication

In September, the turnover of *information and communication* improved once again (+0.6% after +0.6% in August). It went up in *computer programming consultancy and related activities* (+1.4%), in *programming and broadcasting activities* (+5.7%), in *telecommunications* (+0.3%) and in *information service activities* (+1.5%). On the contrary, it plummeted in *publishing activities* (-2.1%) and marginally fell in *motion picture, video and television programme production* (-0.2%).

The turnover of *information and communication* levelled off over the last quarter (-0.1%) and grew slightly over the year (+0.2%).

### Near stability in business support activities

The turnover of *business support activities* held almost steady in September (-0.1%) after an increase in August (+0.8%). It shrank slightly in *administrative and support service activities* (-0.3%): it diminished in *office administrative, office support and other business support activities* (-1.9%) but increased in *employment activities* (+1.3%) and in *services to buildings and landscape activities* (+1.5%). The turnover remained stable in *professional, scientific and technical activities*: it rose in *activities of head office* (+1.2%) while it diminished in *legal and accounting activities* (-2.2%) and in *architectural and engineering activities* (-0.7%). The turnover in *business support activities* improved over the last quarter (+1.2%) and over the year (+2.0%).

#### • Revisions

The change in August was revised by -0.2 point in *transportation and storage*. Initially calculated at +0.3%, it was revised at +0.1%. That same month, the change was revised by -0.1 point in the *wholesale trade, except for motor vehicles and motorcycles* and by +0.1 point in *information and communication* and *real estate activities*. It remained unchanged in *business support activities*.

### Variation of the turnover in the wholesale trade and business services


SA-WDA value, Base year 2010

Nace Classification	Weight	Sept. 2014	Change in %		
			Sept./ Aug.	Aug./ July	q-o-q (1)
<b>46 Wholesale trade, except for motor vehicles and motorcycles</b>	<b>1000</b>	<b>111.2</b>	<b>0.2</b>	<b>0.6</b>	<b>0.5</b>
461 Wholesale on a fee or contract basis	152	119.4	1.1	0.0	0.2
462 Wholesale of agricultural raw materials and live animals	54	115.3	-0.9	-5.1	1.6
463 Wholesale of food, beverages and tobacco	170	113.1	1.3	0.6	-0.5
464 Wholesale of household goods	207	107.3	-0.5	1.6	0.6
465 Wholesale of information and communication equipment	61	102.3	-0.3	1.7	0.7
466 Wholesale of other machinery, equipment and supplies	125	113.0	-0.3	2.0	0.3
467 Other specialised wholesale	197	107.6	0.6	0.0	1.4
469 Non specialised wholesale trade	34	112.1	-1.9	2.9	0.2
<b>H Transportation and storage</b>	<b>1000</b>	<b>106.5</b>	<b>-0.2</b>	<b>0.1</b>	<b>0.0</b>
49 Land transport and transport via pipelines	407	109.5	1.7	0.2	0.4
50 Water transport	73	111.7	3.0	-4.3	0.0
51 Air transport	91	84.1	-22.3	2.9	-3.8
52 Warehousing and support activities for transportation	360	109.0	2.1	0.6	0.3
53 Postal and courier activities	69	99.3	2.1	-2.6	1.0
<b>J Information and communication</b>	<b>1000</b>	<b>103.3</b>	<b>0.6</b>	<b>0.6</b>	<b>-0.1</b>
58 Publishing activities	158	103.9	-2.1	1.9	1.4
59 Motion picture, video and television programme production...	76	102.5	-0.2	3.8	-1.7
60 Programming and broadcasting activities	61	107.6	5.7	-3.7	-3.7
61 Telecommunications	396	93.1	0.3	1.3	-0.6
62 Computer programming, consultancy and related activities	251	115.9	1.4	-0.3	0.3
63 Information service activities	58	112.6	1.5	-2.0	2.3
<b>L Real estate activities</b>	<b>1000</b>	<b>102.7</b>	<b>-0.2</b>	<b>0.1</b>	<b>-0.1</b>
681 Buying and selling of own real estate	96	78.4	-4.5	-0.4	-5.6
682 Renting and operating of own or leased real estate	691	106.1	0.0	-0.1	0.7
683 Real estate activities on a fee or contract basis	213	102.4	0.9	0.9	-0.5
<b>M+N Business support activities</b>	<b>1000</b>	<b>112.0</b>	<b>-0.1</b>	<b>0.8</b>	<b>1.2</b>
<b>M Professional, scientific and technical activities</b>	<b>579</b>	<b>111.8</b>	<b>0.0</b>	<b>0.5</b>	<b>0.9</b>
69 Legal and accounting activities	90	106.9	-2.2	1.4	1.2
70 Activities of head offices...	219	118.9	1.2	-1.1	1.3
71 Architectural and engineering activities...	151	109.4	-0.7	1.5	0.8
72 Scientific research and development	26	106.7	1.0	2.8	-0.3
73 Advertising and market research	68	101.9	0.1	1.3	-0.8
74 Other professional, scientific and technical activities	19	113.2	-0.9	3.3	1.2
75 Veterinary activities	6	117.4	1.7	0.5	2.0
<b>N Administrative and support service activities</b>	<b>421</b>	<b>112.2</b>	<b>-0.3</b>	<b>1.3</b>	<b>1.5</b>
77 Rental and leasing activities	98	110.5	-0.2	0.9	0.7
78 Employment activities	80	110.2	1.3	0.6	1.0
79 Travel agency, tour operator...	42	107.1	-0.8	1.5	4.4
80 Security and investigation activities	21	117.9	0.5	2.8	2.2
81 Services to buildings and landscape activities	50	112.0	1.5	1.0	0.5
82 Office administrative, office support and other business support activities	131	115.3	-1.9	1.7	1.8

(1) Quarter-on-quarter: last three months / previous three months.

Source: INSEE

#### For further information :

- Complementary data (long series) and metadata (methodology, linked internet pages, etc.) are available on the web page of the index: <http://www.insee.fr/fr/themes/info-rapide.asp?id=95>
- Historical data are available on BDM: [G1418](#), [G1421](#), [G1423](#), [G1424](#), [G1426](#).
- Press contact: [bureau-de-presse@insee.fr](mailto:bureau-de-presse@insee.fr)
-  Follow us on [Twitter@InseeFr\\_News](https://twitter.com/InseeFr_News) (lien : [https://twitter.com/InseeFr\\_News](https://twitter.com/InseeFr_News))

Next publication : December 23<sup>th</sup> 2014