

## ■ Turnover in the retail trade and personal services - July 2012

### In July 2012, the turnover declined in the household services and in accommodation and food service activities

Every index in this issue is in volume, seasonally and working-day adjusted.

In July 2012, the turnover decreased compared to June in the *household services* (−1.0 %), in *accommodation and food service activities* (−0.7 %) and in the *trade and repair of motor vehicles and motorcycles* (−0.5 %). Conversely, it rose in the *retail trade, except of motor vehicles and motorcycles* (+1.3 %).

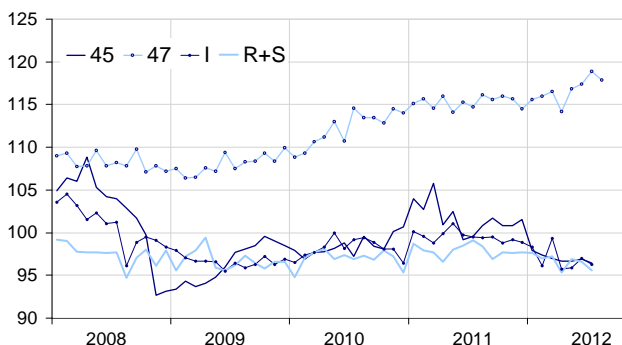
Quarter on quarter (q-o-q), the turnover fell in *accommodation and food service activities* (−0.7 %) and in the *trade and repair of motor vehicles and motorcycles* (−0.4 %). It was broadly steady in the *household services* (−0.1 %). It grew in the *retail trade* (+1.8 %).

Year on year (y-o-y), the turnover decreased in the *trade and repair of motor vehicles and motorcycles* (−3.8 %), in *accommodation and food services activities* (−3.7 %) and in the *household services* (−2.2 %). On the contrary, it grew in the *retail trade* (+2.6 %).

According to our early estimate, the turnover in the *retail trade* is expected to decline in August 2012 (−1.0 %).

#### Retail trade and personal services

Turnover indices, volume SA-WDA, Base year 2005



Please note that the « retail trade... » chart (47) includes the early estimate for August 2012.

Source : INSEE

#### Revisions

The SA-WDA evolution in June has been revised by +0.1 point in the *trade and repair of motor vehicles and motorcycles* and in *accommodation and food service activities*. These variations, respectively announced at +0.1 % and +1.0 % last month, have been corrected at +0.2 % and +1.1 %. These corrections are due to the coefficients SA-WDA's updating.

#### Monthly turnover indices

SA-WDA volume, Base year 2005

| Classification NAF rev. 2  | Weight      | Change in % |             |             |             |
|--|-------------|-------------|-------------|-------------|-------------|
|  |             | July/June   | June/May    | q-o-q (1)   | y-o-y (2)   |
| <b>45 Trade and repair of motor vehicles and motorcycles</b>     | <b>1000</b> | <b>−0.5</b> | <b>0.2</b>  | <b>−0.4</b> | <b>−3.8</b> |
| <b>47 Retail trade, except of motor vehicles and motorcycles</b> | <b>1000</b> | <b>1.3</b>  | <b>0.5</b>  | <b>1.8</b>  | <b>2.6</b>  |
| 471 Retail sale in non-specialized stores                        | 415         | 0.5         | 0.3         | 0.5         | 0.5         |
| 472 to 477 Retail sale in specialized stores                     | 545         | 1.9         | 0.8         | 2.7         | 4.0         |
| 478 and 479 Retail trade not in stores                           | 40          | −0.4        | −0.6        | 0.5         | 2.0         |
| <b>I Accommodation and food service activities</b>               | <b>1000</b> | <b>−0.7</b> | <b>1.1</b>  | <b>−0.7</b> | <b>−3.7</b> |
| <b>R+S Household services</b>                                    | <b>1000</b> | <b>−1.0</b> | <b>−0.3</b> | <b>−0.1</b> | <b>−2.2</b> |
| R Arts, entertainment and recreation                             | 472         | −2.6        | 0.1         | 0.3         | −3.4        |
| S Other service activities                                       | 528         | 0.3         | −0.6        | −0.5        | −1.1        |

(1) Quarter-on-quarter: last three months / three previous months.

(2) Year-on-year: last three months / three same months of the previous year.

The codes correspond to different levels of aggregation of the classification NAF rev.2.

Source : INSEE

#### Turnover indices: early estimate\*

SA-WDA volume, Base year 2005

|                           | Change in %             |                         |
|---------------------------|-------------------------|-------------------------|
|                           | Aug. 2012/<br>July 2012 | Aug. 2012/<br>Aug. 2011 |
| <b>47 Retail trade...</b> | <b>−1.0</b>             | <b>1.5</b>              |

\* Econometric estimate from a set of sources available within 30 days after the end of the reference month

Source : INSEE