

Informations *Rapides*



3 septembre 2012 - n° 216 **CONJONCTURE**

■ Turnover in the retail trade and personal services - June 2012

In June 2012, the turnover rose in accommodation and food service activities and in the retail trade

Every index in this issue is in volume, seasonally and working-day adjusted.

In June 2012, the turnover grew compared to May in *accommodation and food service activities* (+1.0 %) and in the *retail trade, except of motor vehicles and motorcycles* (+0.5 %). It was broadly stable in the *trade and repair of motor vehicles and motorcycles* (+0.1 %). It weakened in the *household services* (−0.3 %).

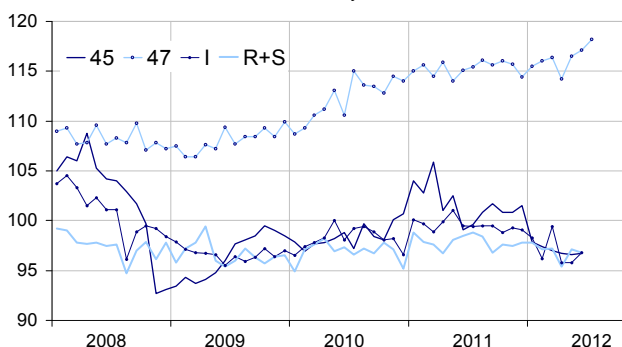
Compared to Q1 2012 (q-o-q), the turnover of Q2 2012 fell in *accommodation and food service activities* (−1.9 %), in the *household services* (−1.0 %) and in the *trade and repair of motor vehicles and motorcycles* (−0.9 %). It was steady in the *retail trade* (0.0 %).

Compared to Q2 2011 (y-o-y), the turnover of Q2 2012 was down in the *trade and repair of motor vehicles and motorcycles* (−4.2 %), in *accommodation and food service activities* (−4.0 %) and, to a lesser extent, in the *household services* (−1.4 %). Conversely, it grew in the *retail trade* (+0.8 %).

According to our estimate, the turnover in the *retail trade* is expected to increase in July 2012 (+0.8 %).

Retail trade and personal services

Turnover indices, volume SA-WDA, Base year 2005



Please note that the « retail trade... » chart (47) includes the early estimate for July 2012.

Source : INSEE

Revisions

The SA-WDA evolution in May has been revised by −0.2 point in *accommodation and food service activities*. The variation, initially announced at +0.2 %, has been corrected at 0.0 %. The correction is due to the coefficients SA-WDA's updating in the sector of *restaurants and mobile food service activities*. In the same period, the SA-WDA evolution has been revised by +0.2 point in the *household services* and by −0.1 point in the *retail trade, except of motor vehicles and motorcycles*.

Monthly turnover indices

SA-WDA volume, Base year 2005

Classification NAF rev. 2	Weight	Change in %			
		June/ May	May/ April	q-o-q (1)	y-o-y (2)
45 Trade and repair of motor vehicles and motorcycles	1000	0.1	−0.1	−0.8	−4.2
47 Retail trade, except of motor vehicles and motorcycles	1000	0.5	2.0	0.0	0.8
471 Retail sale in non-specialized stores	415	0.2	0.7	−0.3	−1.3
472 to 477 Retail sale in specialized stores	545	0.7	2.9	0.2	2.1
478 and 479 Retail trade not in stores	40	−0.5	1.9	−0.6	1.6
I Accommodation and food service activities	1000	1.0	0.0	−1.9	−4.0
R+S Household services	1000	−0.3	1.8	−1.0	−1.4
R Arts, entertainment and recreation	472	0.2	1.7	0.0	−1.0
S Other service activities	528	−0.7	1.8	−1.7	−1.6

(1) Quarter-on-quarter: last three months / three previous months.

(2) Year-on-year: last three months / three same months of the previous year.

The codes correspond to different levels of aggregation of the classification NAF rev.2.

Source : INSEE

Turnover indices: early estimate* for July 2012

SA-WDA volume, Base year 2005

	Change in %	
	July 2012/ June 2012	July 2012/ July 2011
47 Retail trade...	0.8	3.2

* Econometric estimate from a set of sources available within 30 days after the end of the reference month

Source : INSEE