

# Informations *Rapides*



2 avril 2012 - n° 88 CONJONCTURE

## ■ Turnover in the retail trade and personal services - January 2012

### In January 2012, the turnover declined in the trade and repair of motor vehicles and motorcycles but grew in the retail trade

Every index in this issue is in volume, seasonally and working-day adjusted.

In January 2012, the turnover decreased in the *trade and repair of motor vehicles and motorcycles* (−2.3 %) and in *accommodation and food service activities* (−1.0 %). On the contrary, it rose in the *retail trade, except of motor vehicles and motorcycles* (+1.0 %) and, to a lesser extent, in the *household services* (+0.2 %).

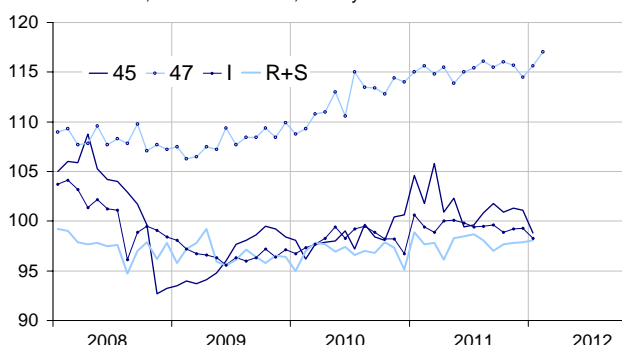
Quarter on quarter (q-o-q), the turnover fell in the *trade and repair of motor vehicles and motorcycles* (−0.8 %), in the *retail trade* (−0.5 %) and in *accommodation and food service activities* (−0.4 %). Otherwise, it slightly increased in the *household services* (+0.3 %).

Year on year (y-o-y), the turnover grew in the *households services* (+0.9 %), in the *retail trade* (+0.7 %) and in *accommodation and food services activities* (+0.4 %). It declined in the *trade and repair of motor vehicles and motorcycles* (−1.4 %).

According to our estimate, the turnover in the *retail trade* is expected to rise in February 2012 (+1.2 %).

#### Retail trade and personal services

Turnover indices, volume SA-WDA, Base year 2005



Source : INSEE

Please note that the « retail trade... » chart (47) includes the early estimate for February 2012.

#### Revisions

The SA-WDA evolution in January has been revised by +0.7 point in the *trade and repair of motor vehicles and motorcycles*. The variation, initially announced at −0.9 %, has been corrected at −0.2 %. In the same period, the SA-WDA evolution has been revised by +0.4 point in the *retail trade, except of motor vehicles and motorcycles* and by +0.1 point in *accommodation and food service activities*. The turnover's variation has been confirmed in the *household services*.

Due to the update of the of all the SA-WDA models, revisions are higher than usual.

#### Monthly turnover indices

SA-WDA volume, Base year 2005

Classification NAF rev. 2	Weight	Change in %			
		Jan./ Dec.	Dec./ Nov.	q-o-q (1)	y-o-y (2)
<b>45 Trade and repair of motor vehicles and motorcycles</b>	<b>1000</b>	<b>−2.3</b>	<b>−0.2</b>	<b>−0.8</b>	<b>−1.4</b>
<b>47 Retail trade, except of motor vehicles and motorcycles</b>	<b>1000</b>	<b>1.0</b>	<b>−1.0</b>	<b>−0.5</b>	<b>0.7</b>
471 Retail sale in non-specialized stores	415	1.6	−2.2	−1.3	−2.1
472 to 477 Retail sale in specialized stores	545	0.6	−0.4	−0.1	2.4
478 and 479 Retail trade not in stores	40	0.7	0.1	0.7	1.9
<b>I Accommodation and food service activities</b>	<b>1000</b>	<b>−1.0</b>	<b>0.1</b>	<b>−0.4</b>	<b>0.4</b>
<b>R+S Households services</b>	<b>1000</b>	<b>0.2</b>	<b>0.1</b>	<b>0.3</b>	<b>0.9</b>
R Arts, entertainment and recreation	472	0.5	0.9	0.7	2.3
S Other service activities	528	−0.1	−0.7	−0.1	−0.5

(1) Quarter-on-quarter: last three months / three previous months.

(2) Year-on-year: last three months / three same months of the previous year.

The codes correspond to different levels of aggregation of the classification NAF rev.2.

Source: INSEE

#### Turnover indices: early estimate\*

SA-WDA volume, Base year 2005

	Change in %	
	Feb. 2012/ Jan. 2012	Feb. 2012/ Feb. 2011
<b>47 Retail trade...</b>	<b>1.2</b>	<b>1.2</b>

\* Econometric estimate from a set of sources available within 30 days after the end of the reference month

Source: INSEE