

Informations Rapides

10 juillet 2013 - n° 160

Main indicators



Industrial Production Indices – May 2013

In May 2013, manufacturing output decreased (-1.1%)

In May 2013, compared to April, **manufacturing output** decreased (-1.1%), as well as **industrial production as a whole** (-0.4%).

During the last three months, manufacturing output increased by 0.6%...

During the last three months (q-o-q), output increased in the manufacturing sector (+0.6%), as well as in industry as a whole (+1.0%).

Output improved sharply in the *manufacture of transport equipment* (+5.0%) and in the *manufacture of coke and refined petroleum products* (+8.1%). It increased slightly in the *manufacture of electrical and electronic equipment* (+0.8%). On the contrary, output decreased in the *manufacture of food products and beverages* (-1.1%) and remained stable in *other manufacturing*.

...and was lower than its last year's level by 1.9%.

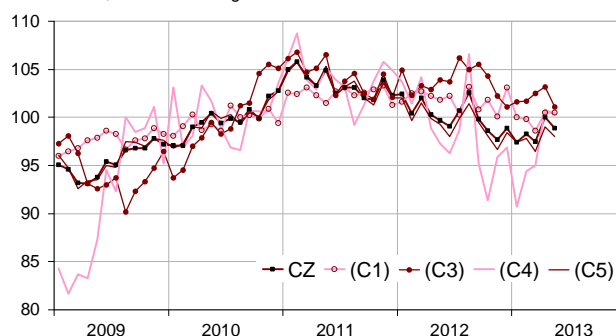
Manufacturing output fell by 1.9% (y-o-y).

Output went down in *other manufacturing* (-2.4%), in the *manufacture of food products and beverages* (-2.3%), in the *manufacture of electrical and electronic equipment and machine equipment* (-1.1%) and in the *manufacture of transport equipment* (-1.4%). On the opposite, manufacturing output bounced by 13.9% in the *manufacture of coke and refined petroleum products*.

Please note: all the series are adjusted for seasonal variations (SA) and the number of working days (WDA).

Monthly industrial Production indices

2010 based, SA-WDA changes in %



Legend : CZ : Manufacturing - (C1) : Manufacture of food products and beverages - (C3) : Electrical and electronic equipment; machine equipment - (C4) : Manufacture of transport equipment - (C5) : Other manufacturing

Sources : Insee, SSP, SOeS

Variation of the Industrial Production

2010 based, SA-WDA changes in %

NA : A10, (A17)	May / April	April / March	Q-o-Q change	Year on year change (1)
BE: INDUSTRY	-0.4	2.2	1.0	-0.7
CZ: Manufacturing	-1.1	2.6	0.6	-1.9
(C1): Manufacture of food products and beverages	0.0	1.9	-1.1	-2.3
(C2): Manufacture of coke and refined petroleum products	-2.5	2.1	8.1	13.9
(C3): Electrical and electronic equipment; machine equipment	-2.0	0.7	0.8	-1.1
(C4): Manufacture of transport equipment	-0.5	6.1	5.0	-1.4
(C5): Other manufacturing	-1.0	2.6	0.0	-2.4
(DE): Mining and quarrying; energy; water supply; waste management	2.1	1.4	2.5	4.3
FZ: CONSTRUCTION	-0.2	0.4	-0.5	-4.4

(1) Last three months / three previous months

(2) Last three months / three same months of previous year

The codes correspond to the level of aggregation A 10 (A 17) of the "NA" aggregate classification based on NAF rev.2.

Sources : INSEE, SSP, SOeS

Variation of the Industrial Production

2010 based, SA-WDA changes in %

	May 2013	May / April	April / March	Quarter on quarter change
NA : A10. (A17). [A38 ou A64]	99.6	-0.4	2.2	1.0
BE: INDUSTRY	99.6	-0.4	2.2	1.0
CZ: Manufacturing	98.9	-1.1	2.6	0.6
(C1): Man. of food products and beverages	100.5	0.0	1.9	-1.1
(C2): Man. of coke and refined petroleum products	93.4	-2.5	2.1	8.1
(C3): Electrical and electronic equipment; machine equipment	101.1	-2.0	0.7	0.8
[C1] Man. of computer, electronic and optical products	99.6	-3.8	-0.1	2.8
[CJ] Man. of electrical equipment	97.8	-1.6	0.6	2.0
[CK] Man. of machinery and equipment n.e.c. (1)	104.1	-1.2	1.2	-1.0
(C4): Man. of transport equipment	100.3	-0.5	6.1	5.0
[CL1] Man. of motor vehicles, trailers and semi-trailers	92.2	1.7	5.5	6.3
[CL2] Man. of other transport equipment	109.4	-2.5	6.8	3.8
(C5): Other manufacturing	98.0	-1.0	2.6	0.0
[CB] Man. of textiles, wearing apparel, leather and related products	98.8	1.1	5.1	-1.3
[CC] Man. of wood and paper products; printing and reproduction of recorded media	90.3	-0.7	0.8	-1.2
[CE] Man. of chemicals and chemical products	107.1	-0.6	2.7	-0.9
[CF] Man. of basic pharmaceutical products and pharmaceutical preparations	102.9	0.2	0.8	2.8
[CG] Man. of rubber and plastics products, and other non-metallic mineral products	94.3	-2.0	2.6	0.1
[CH] Man. of basic metals and fabricated metal products, except machinery and equipment	97.0	-0.5	2.6	0.1
[CM] Other manufacturing; repair and installation of machinery and equipment	99.0	-2.3	3.4	-0.3
(DE): Mining and quarrying; energy; water supply; waste management	102.4	2.1	1.4	2.5
[BZ] Mining and quarrying	92.7	-3.5	1.6	-0.9
[DZ] Electricity, gas, steam and air-conditioning supply	103.1	3.0	1.3	3.0
[EZ] Water supply; sewerage, waste management and remediation	102.2	-1.3	2.1	0.6
FZ: CONSTRUCTION	95.5	-0.2	0.4	-0.5
MIGs (2)				
Capital goods	100.0	-1.4	3.2	1.2
Intermediate goods	96.6	-1.3	2.5	0.3
Consumer durables	98.5	-3.9	2.1	-1.1
Consumer non-durables	101.7	0.2	1.7	-0.1

(1) n.e.c. : not elsewhere classifiable

(2) Main industrial groupings : definition in Commission regulation EC of 14 June 2007

Sources : Insee, SSP, SOeS

In May, output went down in "other manufacturing" (-1.0%)...

Output went down in May, compared to April, in *other manufacturing, repair and installation of machinery and equipment* (-2.3%), in the *manufacture of rubber and plastics products and other non-metallic mineral products* (-2.0%), in the *manufacture of basic metals and fabricated metal products, except machinery and equipment* (-0.5%), in the *manufacture of chemicals and chemical products* (-0.6%), and in the *manufacture of wood and paper products; printing and reproduction of recorded media* (-0.7%). On the contrary, output increased in the *manufacture of textiles, wearing apparel, leather and related products* (+1.1%) and to a smaller extent in the *manufacture of basic pharmaceutical products and pharmaceutical preparations* (+0.2%).

... in the manufacture of electrical and electronic equipment, machine equipment (-2.0%)...

Output declined in the *manufacture of computer, electronic and optical product* (-3.8%), in the *manufacture of machinery and equipment n.e.c.* (-1.2%) and in the *manufacture of electrical equipment* (-1.6%).

...in the manufacture of transport equipment (-0.5%)...

Output decreased in the *manufacture of other transport equipment* by 2.5% while it increased in the *manufacture of motor vehicles, trailers and semi-trailers* by 1.7%.

...and in the manufacture of coke and refined petroleum products (-2.5%).

Output diminished by 2.5% in the *manufacture of coke and refined petroleum products*.

• Revisions in March

Measure of variations' revisions

(in point %)

	April / March	March / Feb.	Feb. / Jan.	Q1 2013 / Q4 2012	2012 / 2011
Industry (BE)	0.00	0.00	0.00	-0.14	-0.01
raw serie	-0.01	-0.09	0.00	-0.13	-0.01
SA-WDA coefficient	0.01	0.09	0.00	-0.01	0.00
Manufacturing (CZ)	0.00	-0.10	0.00	-0.20	-0.02
raw serie	0.00	-0.20	0.10	-0.20	-0.02
SA-WDA coefficient	0.00	0.10	-0.10	0.00	0.00

Note of reading : in the manufacturing sector, the SA-WDA evolution between February 2013 and March 2013 is revised by -0.10 point :-0.20 is due to the raw serie's revision and +0.10 to the new calculation of the SA-WDA..

Sources : Insee, SSP, SOeS

Learn more:

- Complementary data (long series) and metadata (methodology, linked internet pages...) are available on the HTML page of this index: <http://www.insee.fr/en/themes/info-rapide.asp?id=10>
- Historical data are available on the BDM: [G950](#), [G951](#), [G952](#), [G953](#), [G963](#).
- Press contact: bureau-de-presse@insee.fr

Next issue: August 9 2013, 8:45 AM