

Informations *Rapides*



1 février 2012 - n° 36 **CONJONCTURE**

■ Turnover in the wholesale trade and business services - November 2011

In November 2011, the turnover rose in real estate activities and in transportation and storage

Every index in this issue is in value, seasonally and working-day adjusted.

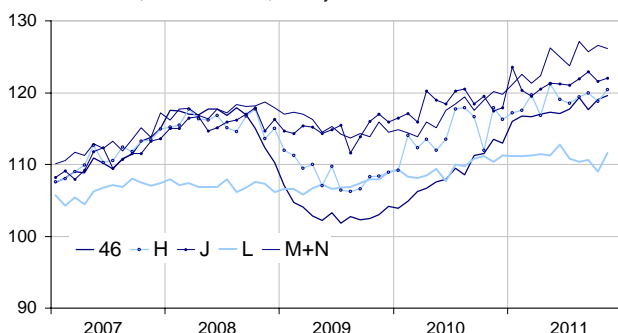
In November 2011, the turnover increased in *real estate activities* (+2.4 %), in *transportation and storage* (+1.3 %) and, to a lesser extent, in the *wholesale trade* (+0.4 %) and in *information and communication* (+0.3 %). On the contrary, it declined in *business support activities* (−0.4 %).

Quarter on quarter (q-o-q), the turnover rose in *business support activities* (+0.7 %), in *information and communication* (+0.7 %), in the *wholesale trade* (+0.6 %) and in *transportation and storage* (+0.6 %). Conversely, it fell in *real estate activities* (−0.8 %).

Year on year (y-o-y), the turnover grew in *business support activities* (+6.1 %), in the *wholesale trade* (+5.9 %), in *transportation and storage* (+3.7 %) and in *information and communication* (+3.2 %) whereas it slightly decreased in *real estate activities* (−0.4 %).

Wholesale trade and business service

Turnover indices, value SA-WDA, Base year 2005



Source : INSEE

Revisions

The SA-WDA evolution in October has been revised by +0.2 point in *business support activities*. The

increase, initially announced at +0.5 %, is corrected at +0.7 %. This correction is due to the coefficients SA-WDA's updating in the sector of *architectural and engineering activities*. In the same period, the SA-WDA evolution has been revised by −0.2 point in *transportation and storage*, by −0.1 point in the *wholesale trade* and by +0.1 point in *real estate activities*. In the same period, the turnover's variation has been confirmed in *information and communication*.

Monthly turnover indices

SA-WDA value, Base year 2005

Classification NAF rev. 2	Weight	Change in %			
		Nov./ Oct.	Oct./ Sept.	q-o-q (1)	y-o-y (2)
46 Wholesale trade, except of motor vehicles and motorcycles	1000	0.4	1.3	0.6	5.9
Wholesale on a fee or contract basis	166	2.0	0.7	1.6	7.0
Wholesale of agricultural raw materials and live animals	62	0.4	4.9	0.9	14.8
Wholesale of food, beverages and tobacco	183	−2.0	4.4	1.2	6.4
Wholesale of household goods	173	0.8	−0.8	0.2	2.3
Wholesale of professional equipment goods	215	0.7	0.2	1.1	4.6
Other specialized wholesale	193	1.0	0.1	−0.9	6.0
H Transportation and storage	1000	1.3	−1.0	0.6	3.7
J Information and communication	1000	0.3	−1.1	0.7	3.2
L Real estate activities	1000	2.4	−1.4	−0.8	−0.4
M+N Business support activities	1000	−0.4	0.7	0.7	6.1
M Professional, scientific and technical activities	626	0.2	1.1	1.2	6.8
N Administrative and support service activities	374	−1.4	0.2	−0.1	4.9

(1) Quarter-on-quarter: last three months / three previous months.

(2) Year-on-year: last three months / three same months of the previous year.

The codes correspond to different levels of aggregation of the classification NAF rev. 2.

Source: INSEE