

Informations *Rapides*



3 octobre 2011 - n° 242 **CONJONCTURE**

■ Turnover in the wholesale trade and business services - July 2011

In July 2011, the turnover declined in business support activities and rose in the wholesale trade

Every index in this issue is in value, seasonally and working-day adjusted.

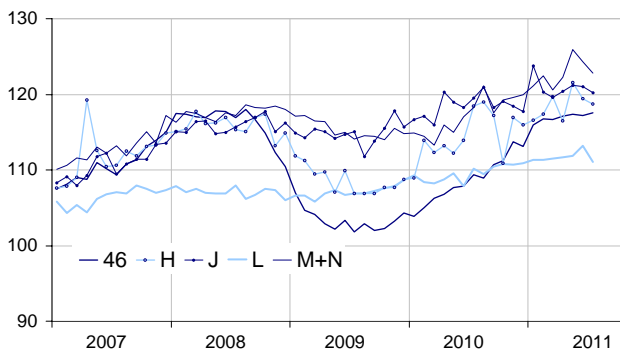
In July 2011, the turnover decreased in *real estate activities* (−1.9 %) and in *business support activities* (−1.2 %). It also declined in *information and communication* (−0.7 %) and in *transportation and storage* (−0.6 %). Conversely, it slightly increased in the *wholesale trade* (+0.3 %).

Quarter on quarter (q-o-q), the turnover rose : by 2.1 % in *business support activities*, by 1.7 % in *transportation and storage*, by 0.6 % in *information and communication*, by 0.5 % in *real estate activities* and by 0.5 % in the *wholesale trade*.

Year on year (y-o-y), the turnover picked up by 8.4 % in the *wholesale trade*. It also grew in *business support activities* (+6.5 %), in *transportation and storage* (+4.4 %) and, to a lesser extent, in *real estate activities* (+2.6 %) and in *information and communication* (+1.6 %).

Wholesale trade and business service

Turnover indices, value SA-WDA, Base year 2005



Source : INSEE

Revisions

The SA-WDA evolution in June has been revised by +0.7 point in *real estate activities*. The increase, initially announced at +0.5 %, is corrected at +1.2 %. In the same period, the SA-WDA evolution has been revised by +0.3 point in *business support activities*, by +0.1 point in *transportation and storage* and in the *wholesale trade*, and by −0.1 point in the *wholesale trade*.

Monthly turnover indices

SA-WDA value, Base year 2005

Classification NAF rev. 2	Weight	Change in %			
		July/June	June/May	q-o-q (1)	y-o-y (2)
46 Wholesale trade, except of motor vehicles and motorcycles	1000	0.3	−0.2	0.5	8.4
Wholesale on a fee or contract basis	166	0.7	1.1	1.8	7.4
Wholesale of agricultural raw materials and live animals	62	2.1	0.5	2.6	26.4
Wholesale of food, beverages and tobacco	183	−0.8	0.9	0.2	6.3
Wholesale of household goods	173	−0.6	0.6	1.3	3.3
Wholesale of professional equipment goods	215	0.5	−1.5	−0.2	7.1
Other specialised wholesale	193	1.4	−2.0	−1.3	10.9
H Transportation and storage	1000	−0.6	−1.8	1.7	4.4
J Information and communication	1000	−0.7	−0.2	0.6	1.6
L Real estate activities	1000	−1.9	1.2	0.5	2.6
M+N Business support activities	1000	−1.2	−1.3	2.1	6.5
M Professional, scientific and technical activities	626	−2.3	0.0	1.8	6.5
N Administrative and support service activities	374	0.6	−3.5	2.6	6.6

(1) Quarter-on-quarter: last three months / three previous months.

(2) Year-on-year: last three months / three same months of the previous year.

The codes correspond to different levels of aggregation of the classification NAF rev. 2.

Source: INSEE