

Informations *Rapides*



9 décembre 2011 - n° 301 **CONJONCTURE**

Main indicators

■ Industrial Production Indices – October 2011

In October 2011, manufacturing output was stable (0.0%)

In October 2011, **manufacturing output** was stable in volume (+0.0%). It had sharply decreased in September 2011 (-2.1%).

In **total industry**, output was stable as well (+0.0%).

In the last three months, manufacturing output decreased (-0.6%)...

In the last three months (quarter-on-quarter change), output decreased in the manufacturing sector as well as in the industry as a whole (-0.6%).

Output decreased in the *other manufacturing sectors* (-0.8%) and in the *manufacture of transport equipment* (-1.8%). Meanwhile, it increased in the *electrical, electronic equipment and machine equipment* (+0.6%).

...though it remained higher than its last year's level by 3.1%

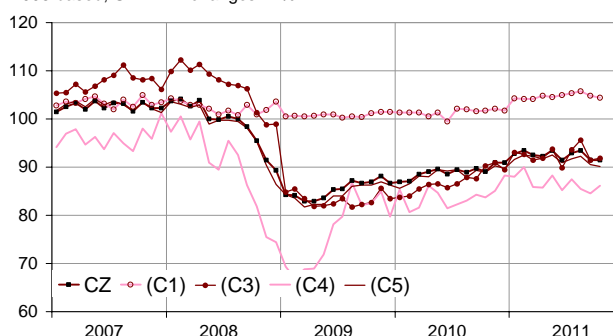
Manufacturing output rose by 3.1% (y-o-y).

It increased in the *other manufacturing sectors* (+2.6%), in the *electrical and electronic equipment and machine equipment* (+4.9%), in the *manufacture of food products and beverages* (+3.1%) and in the *manufacture of transport equipment* (+2.0%).

Please note: all the series are adjusted for seasonal variations (SA) and the number of working days (WDA).

Monthly industrial Production indexes

2005 based, SA-WDA changes in %



Legend : CZ : Manufacturing - (C1) : Manufacture of food products and beverages - (C3) : Electrical and electronic equipment; machine equipment - (C4) : Manufacture of transport equipment - (C5) : Other manufacturing
Sources : Insee, SSP, SOeS

Variation of the Industrial Production by activity (NA)

2005 based, SA-WDA changes in %

NA : A10, (A17)	Oct. / Sept.	Sept. / Aug.	Quarter on quarter change	Year on year change (1)
BE: INDUSTRY	0.0	-2.1	-0.6	2.3
CZ: MANUFACTURING	0.0	-2.1	-0.6	3.1
(C1): Manufacture of food products and beverages	-0.4	-0.9	0.0	3.1
(C2): Manufacture of coke and refined petroleum products	2.7	-1.3	-0.3	11.9
(C3): Electrical and electronic equipment; machine equipment	0.5	-4.4	0.6	4.9
(C4): Manufacture of transport equipment	1.9	-1.2	-1.8	2.0
(C5): Other manufacturing	-0.6	-1.8	-0.8	2.6
(DE): Mining and quarrying; energy; water supply; waste management	-0.2	-2.5	-0.7	-2.6
FZ: Construction	-0.5	-1.8	0.7	1.1

(1) Last three months / three same months of previous year
The codes correspond to the level of aggregation A 10 (A 17) of the "NA" aggregate classification based on NAF rev.2.
Sources : INSEE, SSP, SOeS

In October 2011, output increased in the manufacture of transport equipment (+1.9%)...

Output increased in the *manufacture of motor vehicles, trailers and semi-trailers* (+2.5%) and in the *manufacture of other transport equipment* (+1.2%).

Variation of the Industrial Production

2005 based, SA-WDA changes in %

	Oct. 2011	Oct. / Sept.	Sept. / Aug.	Quarter on quarter change
NA : A10, (A17), [A38 or A64]	91.9	0.0	-2.1	-0.6
BE: INDUSTRY	91.4	0.0	-2.1	-0.6
CZ: MANUFACTURING	91.4	0.0	-2.1	-0.6
(C1): Man. of food products and beverages	104.4	-0.4	-0.9	0.0
(C2): Man. of coke and refined petroleum products	76.7	2.7	-1.3	-0.3
(C3): Electrical and electronic equipment; machine equipment	91.9	0.5	-4.4	0.6
[CI] Man. of computer, electronic and optical products	95.6	3.2	-5.4	-0.5
[CJ] Man. of electrical equipment	100.3	-0.5	-2.5	-0.2
[CK] Man. of machinery and equipment n.e.c. (1)	84.3	-0.8	-4.9	1.9
(C4): Man. of transport equipment	86.1	1.9	-1.2	-1.8
[CL1] Man. of motor vehicles, trailers and semi-trailers	68.4	2.5	-9.4	-4.3
[CL2] Man. of other transport equipment	122.1	1.2	9.9	1.1
(C5): Other manufacturing	90.1	-0.6	-1.8	-0.8
[CB] Man. of textiles, wearing apparel, leather and related products	57.8	-2.2	2.4	-6.2
[CC] Man. of wood and paper products; printing and reproduction of recorded media	75.5	-3.5	-3.7	-2.2
[CE] Man. of chemicals and chemical products	108.1	-2.2	-1.4	-3.0
[CF] Man. of basic pharmaceutical products and pharmaceutical preparations	111.6	-0.1	-0.4	-1.5
[CG] Man. of rubber and plastics products, and other non-metallic mineral products	87.6	0.8	-3.3	-2.0
[CH] Man. of basic metals and fabricated metal products, except machinery and equipment	81.6	-1.0	-1.7	0.1
[CM] Other manufacturing; repair and installation of machinery and equipment	105.5	1.4	-2.3	3.4
(DE): Mining and quarrying; energy; water supply; waste management	95.2	-0.2	-2.5	-0.7
[BZ] Mining and quarrying	87.0	0.7	-3.2	0.6
[DZ] Electricity, gas, steam and air-conditioning supply	95.1	-0.3	-3.0	-0.9
[EZ] Water supply; sewerage, waste management and remediation	102.5	0.4	2.1	0.1
FZ: Construction	95.3	-0.5	-1.8	0.7
MIGs (2)				
Capital goods	91.2	1.8	-3.4	0.6
Intermediate goods	86.4	-1.3	-2.1	-1.3
Consumer durables	82.2	-0.7	-4.9	1.2
Consumer non-durables	102.1	-0.3	-0.3	-1.0

(1) n.e.c. : not elsewhere classifiable

(2) Main industrial groupings : definition in Commission regulation EC of 14 June 2007

Sources : Insee, SSP, SOeS

... as well as in the manufacture of electrical and electronic equipment, machine equipment (+0.5%).

Output sharply increased in the *manufacture of computer, electronic and optical products* (+3.2%). On the other hand, it decreased in the *manufacture of machinery and equipment n.e.c.* (-0.8%) and in the *manufacture of electrical equipment* (-0.5%).

However, output decreased in the « other manufacturing » (-0.6%)

Output decreased in the *manufacture of wood and paper products; printing and reproduction of recorded media* (-3.5%), in the *manufacture of chemicals and chemical products* (-2.2%), in the *manufacture of basic metals and fabricated metal products* (-1.0%) as well as in the *manufacture of textiles, wearing apparel, leather and related products* (-2.2%). It was almost stable in the *manufacture of basic pharmaceutical products and pharmaceutical preparations* (-0.1%).

On the other hand, output increased in the *manufacture of rubber and plastics products* (+0.8%) and in the *other manufacturing, repair and installation of machinery and equipment* (+1.4%).

• Revisions: -0.54 point in September

Measure of variations' revisions

(in point %)

	Sept. / Aug.	Aug. / July	July / June	Q3 2011 / Q2 2011	2010 / 2009
Industry (BE)	-0.44	-0.10	-0.10	-0.36	-0.01
raw serie	-1.53	0.00	0.10	-0.29	-0.01
SA-WDA coefficient	1.09	-0.10	-0.20	-0.07	0.00
Manufacturing (CZ)	-0.54	-0.10	0.01	-0.36	-0.02
raw serie	-1.47	-0.11	0.10	-0.36	-0.03
SA-WDA coefficient	0.93	0.01	-0.09	0.00	0.01

Note of reading : in the manufacturing, the SA-WDA evolution between August and September is revised by -0.54 point :- 1.47 is due to the raw serie's revision and 0.93 to the new calculation of the SA-WDA.

Sources : Insee, SSP, SOeS

Learn more:

- Complementary data (long series) and metadata (methodology, linked internet pages...) are available on the HTML page of this index: <http://www.insee.fr/en/themes/info-rapide.asp?id=10>
- Historical data are available on the BDM: [G950](#), [G951](#), [G952](#), [G953](#), [G963](#).
- Press contact: bureau-de-presse@insee.fr

Next issue: January 10 2012, 8:45 AM