

Informations Rapides



11 février 2013 - n° 33 CONJONCTURE

Main indicators

Industrial Production Indices – December 2012

In December 2012, manufacturing output was almost stable (+0.1%)

Warning : from January 2013, the index industrial production will be base 2010 and referenced to 2010.

In December 2012, **manufacturing output** was almost stable (+0.1 %). Output was also steady in **industry as a whole** (-0.1%).

Over the last quarter, manufacturing output went down by 2.5%...

Over the last quarter (q-o-q), output went down in the manufacturing sector (-2.5%), as well as industry as a whole (-1.8%).

Output declined in *other manufacturing* (-2.6%), in the *manufacture of transport equipment* (-5.5%) as well as in the *manufacture of electrical and electronic equipment* (-2.3%). Output declined strongly in the *manufacture of coke and refined petroleum products* (-9,1%). On the opposite, output increased by 0.8% in the *manufacture of food products and beverages*.

...and was lower than its last year's level by 3.9%.

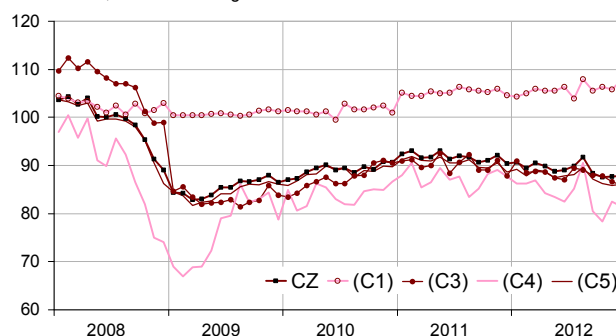
Manufacturing output fell by 3.9% (y-o-y).

Output went down sharply in *other manufacturing* (-3.9%), in the *manufacture of transport equipment* (-8.6%) as well as in the *manufacture of electrical and electronic equipment and machine equipment* (-2.9%). It declined dramatically in the *manufacture of coke and refined petroleum products* (-18.0%).

Please note: all the series are adjusted for seasonal variations (SA) and the number of working days (WDA).

Monthly industrial Production indexes

2005 based, SA-WDA changes in %



Legend : CZ : Manufacturing - (C1) : Manufacture of food products and beverages - (C3) : Electrical and electronic equipment; machine equipment - (C4) : Manufacture of transport equipment - (C5) : Other manufacturing
Sources : Insee, SSP, SOeS

Variation of the Industrial Production

2005 based, SA-WDA changes in %

NA : A10, (A17)	Dec. / Nov.	Nov. / Oct.	Q-o-Q change	Year on year change (1)
BE: INDUSTRY	0,1	0,5	-1,8	-3,1
CZ: Manufacturing	0,1	0,1	-2,5	-3,9
(C1): Manufacture of food products and beverages	1,9	0,5	0,8	1,3
(C2): Manufacture of coke and refined petroleum products	1,4	3,5	-9,1	-18,0
(C3): Electrical and electronic equipment; machine equipment	0,9	1,5	-2,3	-2,9
(C4): Manufacture of transport equipment	1,3	5,4	-5,5	-8,6
(C5): Other manufacturing	0,3	0,5	-2,6	-3,9
(DE): Mining and quarrying; energy; water supply; waste management	0,9	2,2	2,2	1,6
FZ: CONSTRUCTION	1,2	0,2	-1,2	-3,4

(1) Last three months / three previous months

(2) Last three months / three same months of previous year

The codes correspond to the level of aggregation A 10 (A 17) of the "NA" aggregate classification based on NAF rev.2.

Sources : INSEE, SSP, SOeS

Variation of the Industrial Production

2005 based, SA-WDA changes in %

	Dec. 2012	Dec. / Nov.	Nov. / Oct.	Quar- ter on quar- ter chang e
NA : A10, (A17), [A38 ou A64]				
BE: INDUSTRY	88,8	-0,1	0,5	-1,8
CZ: Manufacturing	87,8	0,1	0,1	-2,5
(C1): Man. of food products and beverages	107,8	1,9	-0,5	0,8
(C2): Man. of coke and refined petroleum products	62,2	-1,4	-3,5	-9,1
(C3): Electrical and electronic equipment; machine equipment	85,8	-0,9	-1,5	-2,3
[CI] Man. of computer, electronic and optical products	88,0	1,5	-1,8	-2,3
[CJ] Man. of electrical equipment	91,2	-2,6	-1,7	-3,3
[CK] Man. of machinery and equipment n.e.c. (1)	81,2	-1,7	-0,8	-1,7
(C4): Man. of transport equipment	81,4	-1,3	5,4	-5,5
[CL1] Man. of motor vehicles, trailers and semi-trailers	62,3	4,5	3,3	-10,1
[CL2] Man. of other transport equipment	120,4	-6,8	7,6	-0,5
(C5): Other manufacturing	86,1	0,3	-0,5	-2,6
[CB] Man. of textiles, wearing apparel, leather and related products	54,7	-3,5	-2,1	-2,5
[CC] Man. of wood and paper products; printing and reproduction of recorded media	77,0	2,9	0,7	0,7
[CE] Man. of chemicals and chemical products	113,2	4,1	-1,5	-0,2
[CF] Man. of basic pharmaceutical products and pharmaceutical preparations	112,5	-0,5	-0,5	-1,0
[CG] Man. of rubber and plastics products, and other non-metallic mineral products	79,5	1,5	0,4	-3,5
[CH] Man. of basic metals and fabricated metal products, except machinery and equipment	76,2	1,5	-1,8	-4,5
[CM] Other manufacturing; repair and installation of machinery and equipment	95,7	-5,6	1,8	-3,2
(DE): Mining and quarrying; energy; water supply; waste management	95,8	-0,9	2,2	2,2
[BZ] Mining and quarrying	85,8	0,2	1,7	0,9
[DZ] Electricity, gas, steam and air-conditioning supply	96,1	-1,1	2,3	3,9
[EZ] Water supply; sewerage, waste management and remediation	101,1	-0,5	2,8	-9,7
FZ: CONSTRUCTION	94,1	1,2	-0,2	-1,2
MIGs (2)				
Capital goods	85,1	-2,2	2,0	-3,9
Intermediate goods	81,8	1,4	-1,0	-3,1
Consumer durables	81,9	0,9	0,6	-3,0
Consumer non-durables	104,0	1,2	-0,4	0,6

(1) n.e.c. : not elsewhere classifiable

(2) Main industrial groupings : definition in Commission regulation EC of 14 June 2007

Sources : Insee, SSP, SOeS

Output increased in the manufacture of food products and beverages (+1.9%).

Output increased in the manufacture of food products and beverages (+1.9%). This rise was mainly due to a high level of beer sales before the new tax in 2013.

Output increased slightly in "other manufacturing" (+0.3%).

Output soared in the *manufacture of chemicals and chemical products* (+4.1%). To a lesser extent, output also rose in the *manufacture of basic metals and fabricated metal products, except machinery and equipment* (+1.5%), in the *manufacture of wood and paper products; printing and reproduction of record* (+2.9%) and in the *manufacture of rubber and plastics products, and other non-metallic mineral products* (+1.5%). On the other hand, output declined sharply in *other manufacturing, repair and installation of machinery and equipment* (-5.6%) as well as in the *manufacture of textiles, wearing apparel, leather and related products* (-3.5%).

Output went down in the manufacture of transport equipment (-1.3%)...

Output went down considerably in the *manufacture of other transport equipment* (-6.8%). Meanwhile, it improved in the *manufacture of motor vehicles, trailers and semi-trailers* (+4.5%).

...and in the manufacture of electrical and electronic equipment, machine equipment (-0.9%).

Output dropped by 2.6% in the *manufacture of machinery and equipment n.e.c.* and by 1.7% in the *manufacture of electrical equipment*. It increased moderately in the *manufacture of computer, electronic and optical products* (+1.5%).

• Revisions: +0.11 in November

Measure of variations' revisions

(in point %)

	Nov. / Oct.	Oct. / Sept.	Sept. / Aug.	Q3 2012 / Q2 2012	2011 / 2010
Industry (BE)	0,00	-0,11	-0,21	0,04	0,01
raw serie	-0,32	-0,20	-0,28	-0,04	-0,01
SA-WDA coefficient	0,32	0,09	0,07	0,08	0,02
Manufacturing (CZ)	-0,11	-0,11	-0,32	0,11	0,00
raw serie	-0,33	-0,20	-0,46	0,07	-0,02
SA-WDA coefficient	0,22	0,09	0,14	0,04	0,02

Note of reading : in the manufacturing, the SA-WDA evolution between October and November is revised by -0.11 point : -0.33 is due to the raw serie's revision and 0.22 to the new calculation of the SA-WDA.

Sources : Insee, SSP, SOeS

Learn more:

- Complementary data (long series) and metadata (methodology, linked internet pages...) are available on the HTML page of this index: <http://www.insee.fr/en/themes/info-rapide.asp?id=10>
- Historical data are available on the BDM: [G950](#), [G951](#), [G952](#), [G953](#), [G963](#).
- Press contact: bureau-de-presse@insee.fr

Next issue: March 11 2013, 8:45 AM